

Curve Data For Rev. 84" Alignment
 P.C. 161+21.18
 L=17'03.58' RT
 R=923.23'
 T=216.35'
 P.I. 178.31'
 P.T. 195.3458'
 1/2" S.S. 150' S.P. 150' S.P.
 Use Devils & Pull Pipe As Req'd.

Curve Data For Rev. 84" Alignment
 P.C. 151+92.33
 L=07'31.41' LT
 R=750.00'
 T=59.65'
 P.I. 154.92'
 P.T. 162.2341'
 1/2" S.S. 150' S.P. 150' S.P.
 Use Devils & Pull Pipe As Required

Dallas Independent School District
 A Variable Width Strip of Land & A Temp. Working Space
 For The 84" Water Main
 Abst. 157 BIR 8420
 In The City of Dallas
 C.O. 84-0233
 Vol. 301 Pg. 317
 Date: 11-7-84
 84238

Note:
 Sta. 152+24.5 & 152+130.5
 Contractor Brace The
 Two Power Lines
 Remove The Guide
 Wires During Const.
 Time, If HS Reg'd.
 Contact D.P.L. 48
 Hours In Advance
 Of Const.

Revision:
 CURVE DATA
 L=17'03.58'
 T=216.35'
 R=923.23'
 P.I. 178.31'
 P.T. 195.3458'

Curve Data
 For Revised 84" Alignment
 P.C. 151+92.33
 L=07'31.41' LT
 R=750.00'
 T=59.65'
 P.I. 154.92'
 P.T. 162.2341'

Dallas Independent School District
 Vol. 301 Pg. 0317

151+05 install
 surge control station
 Per Detail Sheet G85W 660B 14C

Install 84" R.C.C. Or
 Steel Water Pipe

152+42 - Rev Survey
 142 Rt. Survey
 Install 12" Water Main
 Conn. Ex. 12" Water Main
 To Prop. 12" Water Main

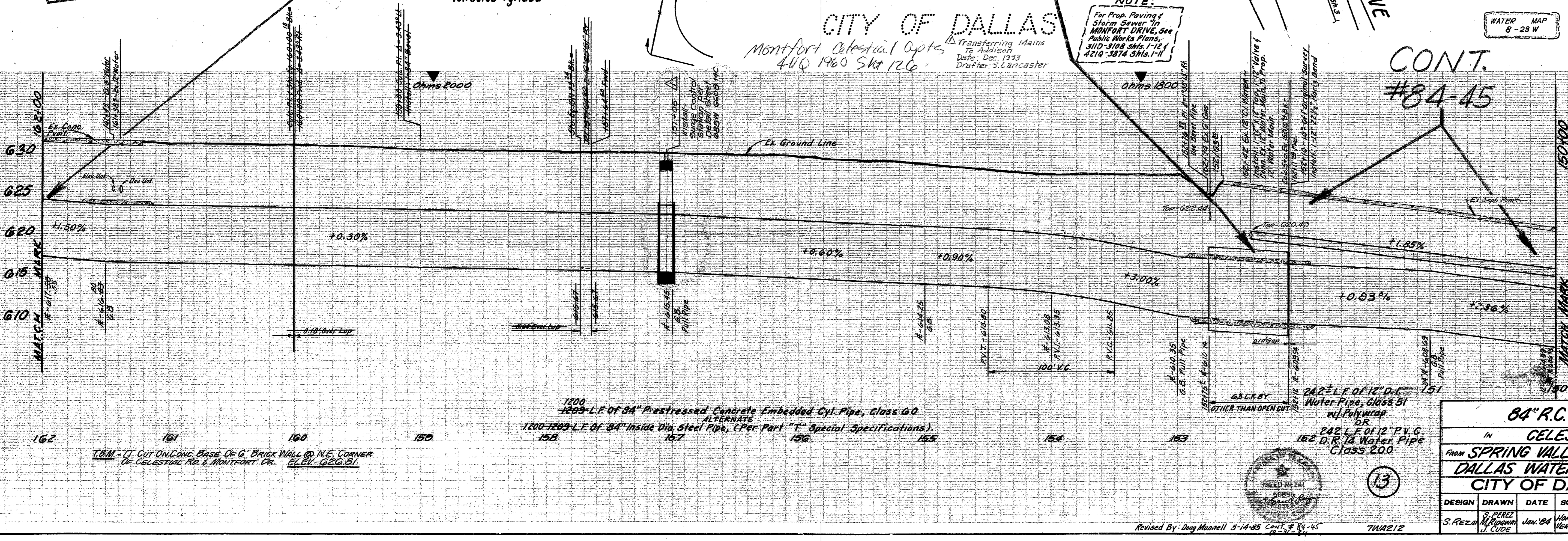
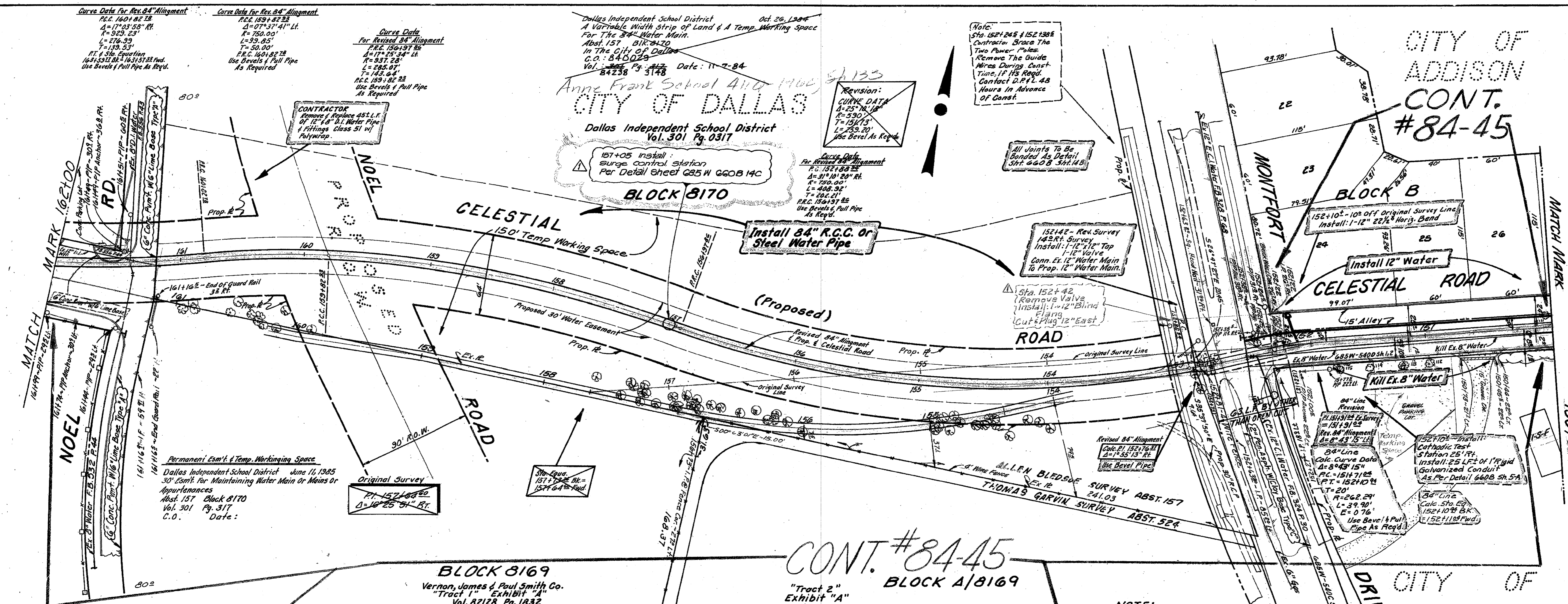
Sta. 152+42
 (Remove Valve
 Install 12" Blind
 Flange
 Cut Plug 12" East

Revised 84" Alignment
 Calc. P.I. 151+76.81
 L=14'55.13' RT
 R=1000.00'

Revised 84" Alignment
 Calc. P.I. 151+76.81
 L=14'55.13' RT
 R=1000.00'

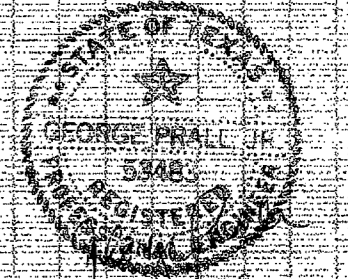
NOTE:
 For Prop. Paving
 Storm Sewer In
 MONTEFORT DRIVE, See
 Public Works Plans,
 3110-3108 SHS 1-12 &
 4210-3874 SHS 1-11

Sta.	Tree	Use	Description
153794	58	12'	Bois D'Arc
1402	12	12'	Bois D'Arc
1404	12	12'	Cluster Hackberry
1406	12	12'	Hackberry
1408	12	12'	Hackberry
1410	12	12'	Hackberry
1412	12	12'	Hackberry
1414	12	12'	Hackberry
1416	12	12'	Hackberry
1418	12	12'	Hackberry
1420	12	12'	Hackberry
1422	12	12'	Hackberry
1424	12	12'	Hackberry
1426	12	12'	Hackberry
1428	12	12'	Hackberry
1430	12	12'	Hackberry
1432	12	12'	Hackberry
1434	12	12'	Hackberry
1436	12	12'	Hackberry
1438	12	12'	Hackberry
1440	12	12'	Hackberry
1442	12	12'	Hackberry
1444	12	12'	Hackberry
1446	12	12'	Hackberry
1448	12	12'	Hackberry
1450	12	12'	Hackberry
1452	12	12'	Hackberry
1454	12	12'	Hackberry
1456	12	12'	Hackberry
1458	12	12'	Hackberry
1460	12	12'	Hackberry
1462	12	12'	Hackberry
1464	12	12'	Hackberry
1466	12	12'	Hackberry
1468	12	12'	Hackberry
1470	12	12'	Hackberry
1472	12	12'	Hackberry
1474	12	12'	Hackberry
1476	12	12'	Hackberry
1478	12	12'	Hackberry
1480	12	12'	Hackberry
1482	12	12'	Hackberry
1484	12	12'	Hackberry
1486	12	12'	Hackberry
1488	12	12'	Hackberry
1490	12	12'	Hackberry
1492	12	12'	Hackberry
1494	12	12'	Hackberry
1496	12	12'	Hackberry
1498	12	12'	Hackberry
1500	12	12'	Hackberry
1502	12	12'	Hackberry
1504	12	12'	Hackberry
1506	12	12'	Hackberry
1508	12	12'	Hackberry
1510	12	12'	Hackberry
1512	12	12'	Hackberry
1514	12	12'	Hackberry
1516	12	12'	Hackberry
1518	12	12'	Hackberry
1520	12	12'	Hackberry
1522	12	12'	Hackberry
1524	12	12'	Hackberry
1526	12	12'	Hackberry
1528	12	12'	Hackberry
1530	12	12'	Hackberry
1532	12	12'	Hackberry
1534	12	12'	Hackberry
1536	12	12'	Hackberry
1538	12	12'	Hackberry
1540	12	12'	Hackberry
1542	12	12'	Hackberry
1544	12	12'	Hackberry
1546	12	12'	Hackberry
1548	12	12'	Hackberry
1550	12	12'	Hackberry
1552	12	12'	Hackberry
1554	12	12'	Hackberry
1556	12	12'	Hackberry
1558	12	12'	Hackberry
1560	12	12'	Hackberry
1562	12	12'	Hackberry
1564	12	12'	Hackberry
1566	12	12'	Hackberry
1568	12	12'	Hackberry
1570	12	12'	Hackberry
1572	12	12'	Hackberry
1574	12	12'	Hackberry
1576	12	12'	Hackberry
1578	12	12'	Hackberry
1580	12	12'	Hackberry
1582	12	12'	Hackberry
1584	12	12'	Hackberry
1586	12	12'	Hackberry
1588	12	12'	Hackberry
1590	12	12'	Hackberry
1592	12	12'	Hackberry
1594	12	12'	Hackberry
1596	12	12'	Hackberry
1598	12	12'	Hackberry
1600	12	12'	Hackberry



84" R.C. WATER MAIN
 IN **CELESTIAL ROAD**
 FROM **SPRING VALLEY** TO **DALLAS N. PKWY.**
DALLAS WATER UTILITIES DEPT.
CITY OF DALLAS, TEXAS

DESIGN	DRAWN	DATE	SCALE	NOTES	FILE	NO.
S. REZA	S. PEREZ	JUN. '84	HOR. 1"=40'	VERT. 1"=4'	G85W 660B	



13

Revised By: Doug Munnell 5-14-85 Cont. # 84-45
 TMA212