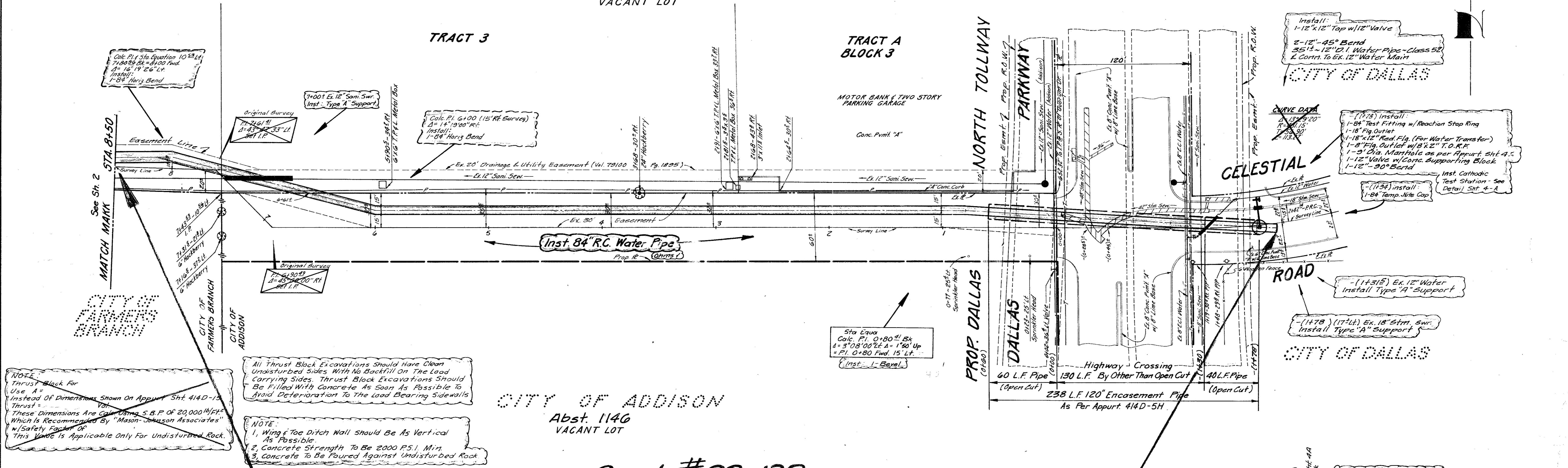


NOTE:
Thrust Block For Use A = Instead Of Dimensions Shown On Appurt. Sht. 414D-15 Thrust = These Dimensions Are Calc. Using S.B.P. of 20,000 Lb/Ft² Which Is Recommended By "Mason-Johnson Associates" w/ Safety Factor of 1.5. This Value Is Applicable Only For Undisturbed Rock.

Vantage Properties, Inc. March 11, 1983
30' Easement For A 84" Water Main From Sta. 0+00 to Sta. 6+61.5
Abst. 1146 In The City of Addison
Temp. Working Space Granted
See Conditions Accompanying This Easement.
C.O. Pg. Date:

Santa Fe Land Improvement Co. April 17, 1983
Easement For A 84" Water Main From Sta. 7+03.2 to Sta. 13+72.5
Abst. 1146, Bk. 3 of Quorum West In The City of Addison
Temp. Working Space Granted
See Conditions Accompanying This Easement.
C.O. Pg. Date:

Abst. 1146
CITY OF ADDISON
VACANT LOT

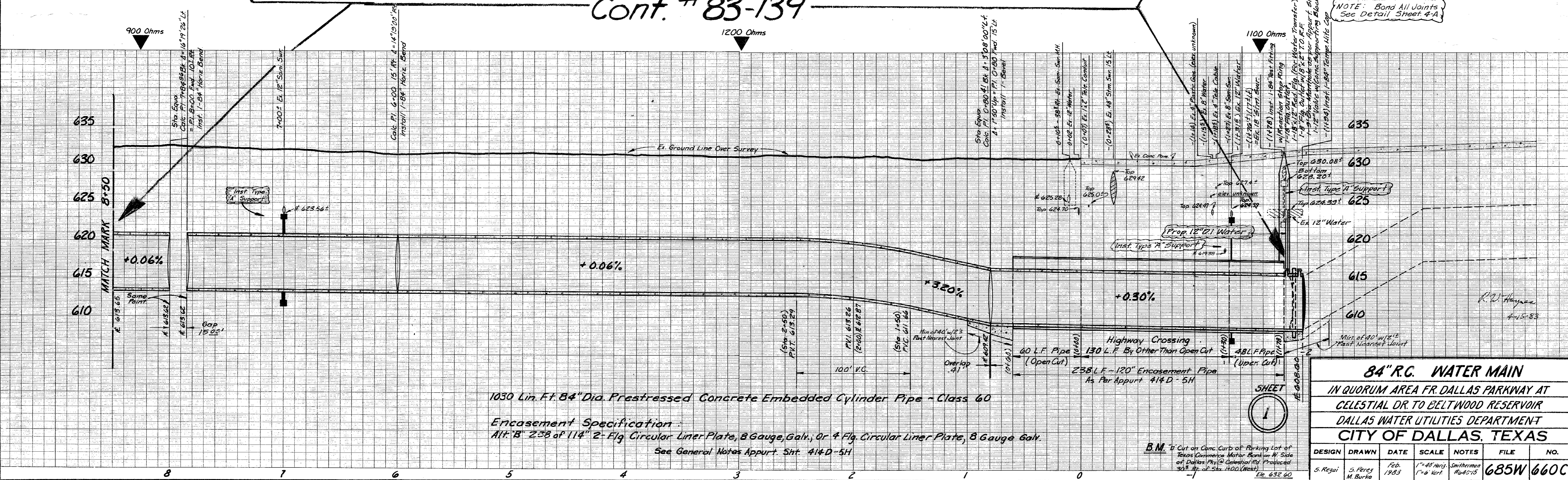


NOTE:
Thrust Block For Use A = Instead Of Dimensions Shown On Appurt. Sht. 414D-15 Thrust = These Dimensions Are Calc. Using S.B.P. of 20,000 Lb/Ft² Which Is Recommended By "Mason-Johnson Associates" w/ Safety Factor of 1.5. This Value Is Applicable Only For Undisturbed Rock.

All Thrust Block Excavations Should Have Clean Undisturbed Sides With No Backfill On The Load Carrying Sides. Thrust Block Excavations Should Be Filled With Concrete As Soon As Possible To Avoid Deterioration To The Load Bearing Side Walls.
NOTE:
1. Wing & Toe Ditch Wall Should Be As Vertical As Possible.
2. Concrete Strength To Be 2000 P.S.I. Min.
3. Concrete To Be Poured Against Undisturbed Rock

CITY OF ADDISON
Abst. 1146
VACANT LOT

Cont. # 83-139



1030 Lin. Ft. 84" Dia. Prestressed Concrete Embedded Cylinder Pipe - Class 60
Encasement Specification:
Alt. B' 238 of 114" 2-Flg. Circular Liner Plate, 8 Gauge, Galv., Or 4-Flg. Circular Liner Plate, 8 Gauge Galv.
See General Notes Appurt. Sht. 414D-5H

84" R.C. WATER MAIN
IN QUORUM AREA FR. DALLAS PARKWAY AT
CELESTIAL DR. TO BELTWOOD RESERVOIR
DALLAS WATER UTILITIES DEPARTMENT
CITY OF DALLAS, TEXAS

DESIGN	DRAWN	DATE	SCALE	NOTES	FILE	NO.
S. Regal	S. Perez M. Burke	Feb. 1983	1"=40' Horiz 1"=8' Vert	Smithman Rd 4-15	685W	660C

B.M. If Cut on Conc. Curb of Parking Lot of Texas Commerce Motor Bank on N. Side of Dallas Hwy. (at Quorum West) Produce 30' E. of Sta. 1100 (West) Ele. 632.60