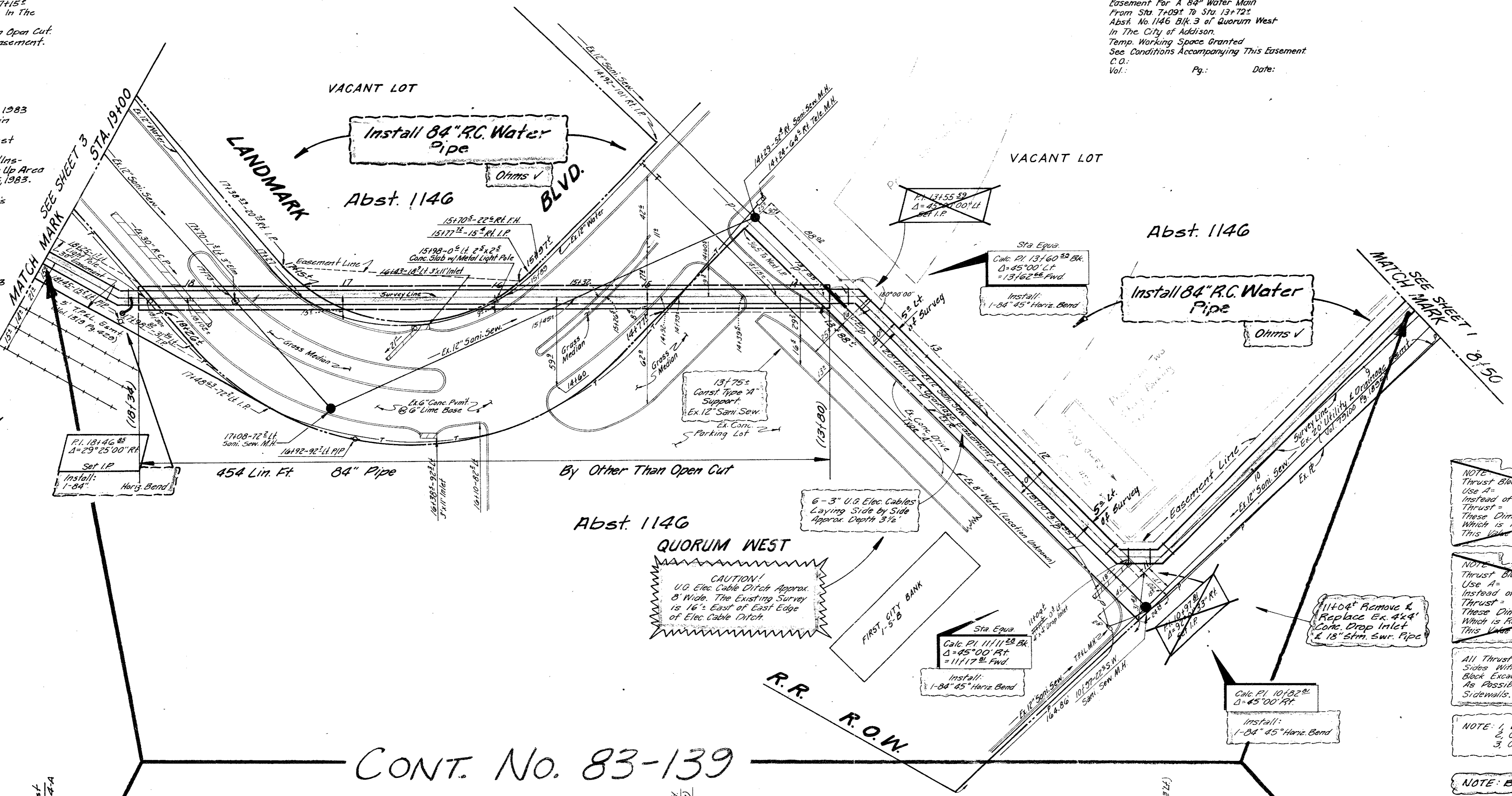


Wen-Clay International, Inc. March 15, 1983
 A Strip of Land from Sta. 15+97.5 to Sta. 17+15.5
 Abst. No. 1146 Blk. 2 of Quorum West in The City of Addison
 Installation of Water Main, By Other Than Open Cut
 See Conditions Accompanying This Easement.
 C.O. Vol. Pg. Date:

Landmark Partners, March 15, 1983
 A 30' Easement For A 84" Water Main
 From Sta. 18+24 to Sta. 20+50
 Abst. No. 1146 Blk. 1 of Quorum West in The City of Addison.
 Contractor To Complete Construction/Installation of 84" Water Main & Clean Up Area (From Sta. 18+24 to Sta. 20+50) by Oct. 15, 1983.
 Temp. Working Space Granted.
 SEE CONDITIONS Accompanying This Easement.
 C.O. Vol. Pg. Date:

First City Bank Corp. of Texas, Inc. March 15, 1983
 A Triangular Tract of Land from Sta. 15+88.5 to Sta. 14+77.7
 Abst. No. 1146 Blk. 3 of Quorum West in The City of Addison.
 Installation of Water Main, By Other Than Open Cut
 See Conditions Accompanying This Easement.
 C.O. Vol. Pg. Date:

Santa Fe Land Improvement Co. April 12, 1983
 Easement For A 84" Water Main
 From Sta. 7+09.5 to Sta. 13+72.5
 Abst. No. 1146 Blk. 3 of Quorum West in The City of Addison.
 Temp. Working Space Granted
 See Conditions Accompanying This Easement.
 C.O. Vol. Pg. Date:



CITY OF ADDISON

NOTE: It Will Be The Contractors Responsibility To Use Sheeting To Prevent The Exist. 12" Sani Sew Line Between Sta. 10+37 to Sta. 15+75 From Falling Into The Water Main Excavation. No Special Pay Will Be Provided For This Item, But The Cost Will Be Bid In Such Items As Are Provided.

NOTE: Brace All Power Poles As Required Contractor Shall Contact Mr. D.E. Rich, C.E. T.F.L. Co. At (214) 247-0175, Two Days Prior To Any Excavation Of This Project At Contractor Expense

NOTE: Thrust Block For 20' 45" Bend at Sta. 10+66.88 Use A Instead of Dimensions Shown On Appant. Sht. 414D-15 Thrust = 10' 1/2" Instead of Dimensions Shown Using S.F. of 20,000 14/ft. 2 Which is Recommended By "M-J" w/ Safety Factor of This Value is Applicable Only For Undisturbed Rock

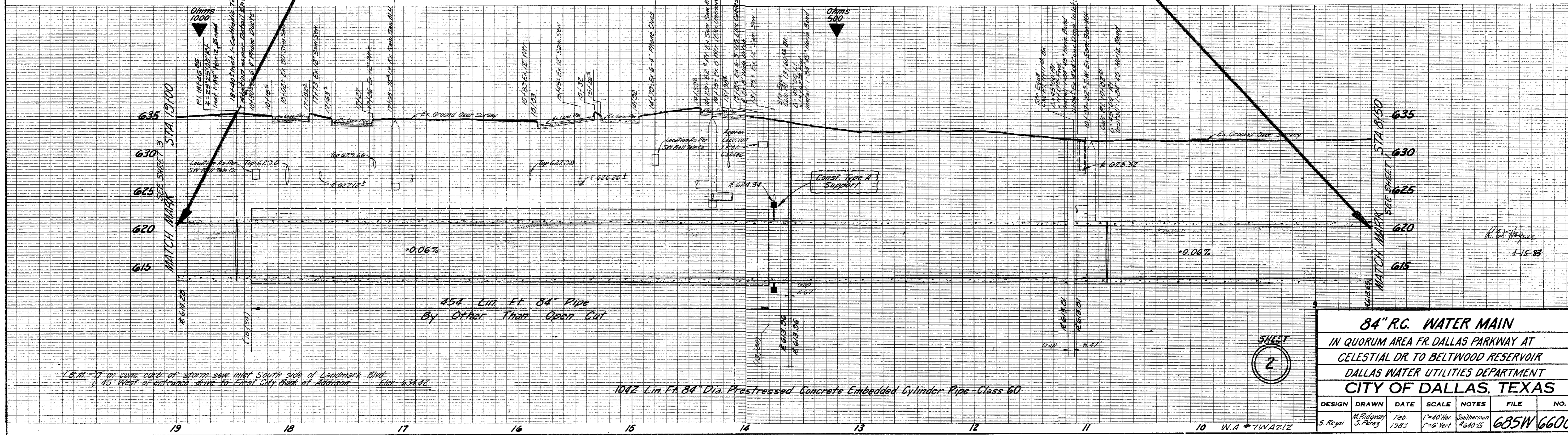
NOTE: Thrust Block For 45" Bends at Sta. 10+32.88, 11+11.98 & 12+00.88 Use A Instead of Dimensions Shown On Appant. Sht. 414D-15 Thrust = 10' 1/2" Instead of Dimensions Shown Using S.F. of 20,000 14/ft. 2 Which is Recommended By "M-J" w/ Safety Factor of This Value is Applicable Only For Undisturbed Rock

All Thrust Block Excavations Should Have Clean Undisturbed Sides With No Backfill On The Load Carrying Sides. Thrust Block Excavations Should Be Filled With Concrete As Soon As Possible To Avoid Deterioration To The Load Bearing Sidewalls.

NOTE: 1. Wing & Toe Ditch Walls Should Be As Vertical As Possible.
 2. Concrete Strength To Be 2000 P.S.I. Min
 3. Concrete To Be Poured Against Undisturbed Rock

NOTE: Bond All Joints See Detail Sheet 4-A

CONT. No. 83-139



84" R.C. WATER MAIN						
IN QUORUM AREA FR. DALLAS PARKWAY AT						
CELESTIAL DR TO BELTWOOD RESERVOIR						
DALLAS WATER UTILITIES DEPARTMENT						
CITY OF DALLAS, TEXAS						
DESIGN	DRAWN	DATE	SCALE	NOTES	FILE	NO.
S. Rejai	M. Ridgway S. Perez	Feb. 1983	1"=40' Hor. 1"=6' Vert.	Smitherman #640-15	685W	660C

SHEET
2

R. W. Hayes
4-15-83

T.B.M. - 7' on conc. curb of storm sew inlet South side of Landmark Blvd. & 45' West of entrance drive to First City Bank of Addison. Elev. 634.82

1042 Lin. Ft. 84" Dia. Prestressed Concrete Embedded Cylinder Pipe - Class 60