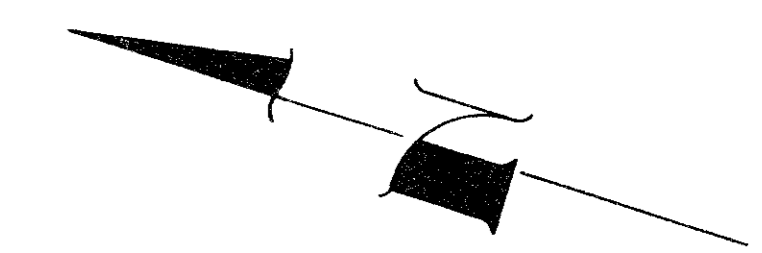


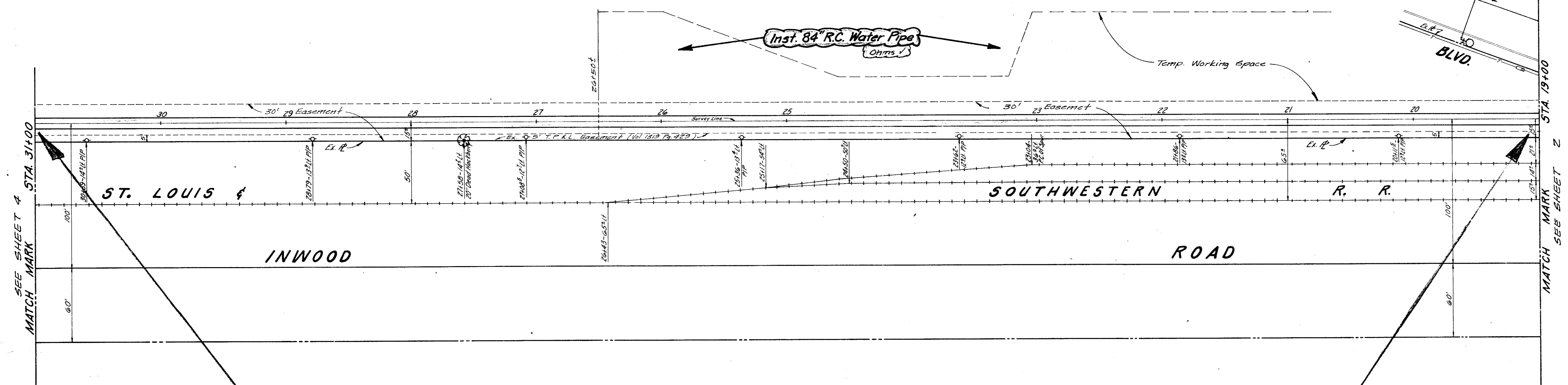
Landmark Partners, March 15, 1983  
 30' Easement for 84" Water Main  
 From Sta. 18+26.2 to Sta. 26+50.2  
 Abst. No. 1146 Blk. 1 of Quorum West  
 In The City of Addison  
 Contractor To Complete Construction/  
 Installation of 84" Water Main & Clean Up Area  
 (From Sta. 18+26.2 to Sta. 26+50.2) By Oct. 15, 1983  
 Temp. Working Space Granted.  
 SEE CONDITIONS Accompanying This  
 Easement.  
 C.O. :  
 Vol. : Pg. : Date :

MENeff-Palmer Properties Inc. March 15, 1983  
 30' Easement for 84" Water Main  
 From Sta. 26+50.2 to Sta. 32+26.2  
 Abst. No. 1146 Blk. 1 of Quorum West  
 In The City of Addison  
 Contractor To Complete Construction/  
 Installation of 84" Water Main & Clean Up Area  
 (From Sta. 26+50.2 to Sta. 32+26.2) By Nov. 20, 1983  
 Temp. Working Space Granted.  
 SEE CONDITIONS Accompanying  
 This Easement.  
 C.O. :  
 Vol. : Pg. : Date :

NOTE: Brace All Power Poles As Required.  
 Contractor Shall Contact Mr. D.E. Rich of  
 T.P. & L. Co. At (214) 247-0175, Two Days  
 Prior To Any Excavation Of This Project.  
 At Contractors Expense.

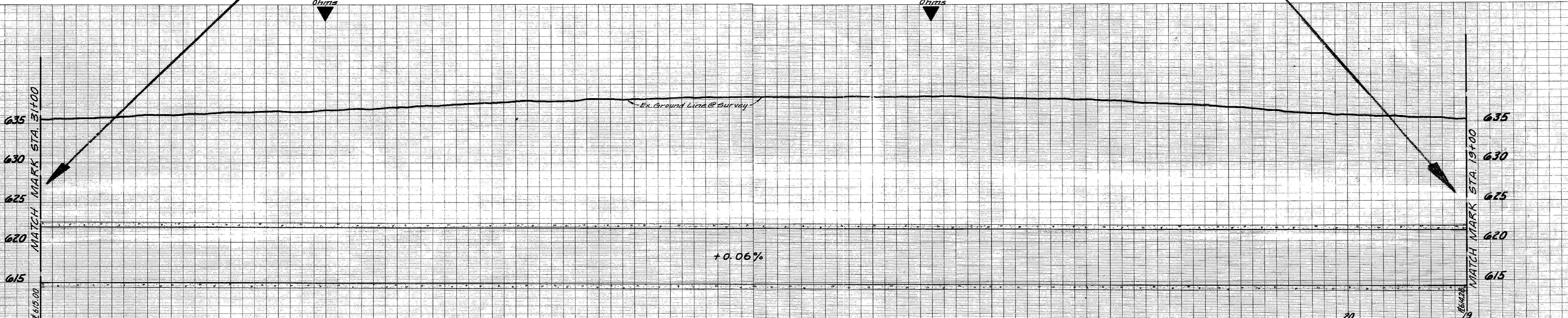


CITY OF ADDISON  
 VACANT LOT  
 Abst. 1146



CITY OF ADDISON  
 Cont. #83-139

NOTE: Bond All Joints See Detail Sht. 4-A



1200 Lin. Ft. 84" Dia. Prestressed Concrete Embedded Cylinder Pipe - Class 60

R.W. Hines  
 4/15/83

SHEET  
 3

<b>84" R.C. WATER MAIN</b>						
IN QUORUM AREA FR. DALLAS PARKWAY AT						
CELESTIAL DR. TO BELTWOOD RESERVOIR						
DALLAS WATER UTILITIES DEPARTMENT						
CITY OF DALLAS, TEXAS						
DESIGN	DRAWN	DATE	SCALE	NOTES	FILE	NO.
S. Regal	S. Perez	Feb. 1983	1"=40' Hor. 1"=6' Vert.	Smitherman #440-15	685W	660C

T.B.M. "D" Cut on conc. curb, center radius S.W. Cor. of Belt Line Rd.  
 & Inwood Rd. west of St. Louis & Southwestern Railroad Elev. @ 32.11 (Oct 11-8-82)  
 B.M. "C" Cut in S.E. Cor. of Pump Pits Structure ben Pump House @  
 the Beltwood Pump Station Elev. 630.02