

McNeff-Palmer Properties Inc. March 15, 1983
 30' Easement For A 84" Water Main
 From Sta. 324+50 to Sta. 344+50
 Abst. No. 1146 Blk. 1 of Quorum West
 In The City of Addison.
 Contractor To Complete Construction/
 Installation of 84" Water Main & Clean Up
 Area (From Sta. 324+50 to Sta. 344+50) by Nov. 20, 1983
 Temp. Working Space Granted.
 SEE CONDITIONS Accompanying This
 Easement.
 C.O.
 Vol. Pg. Date:

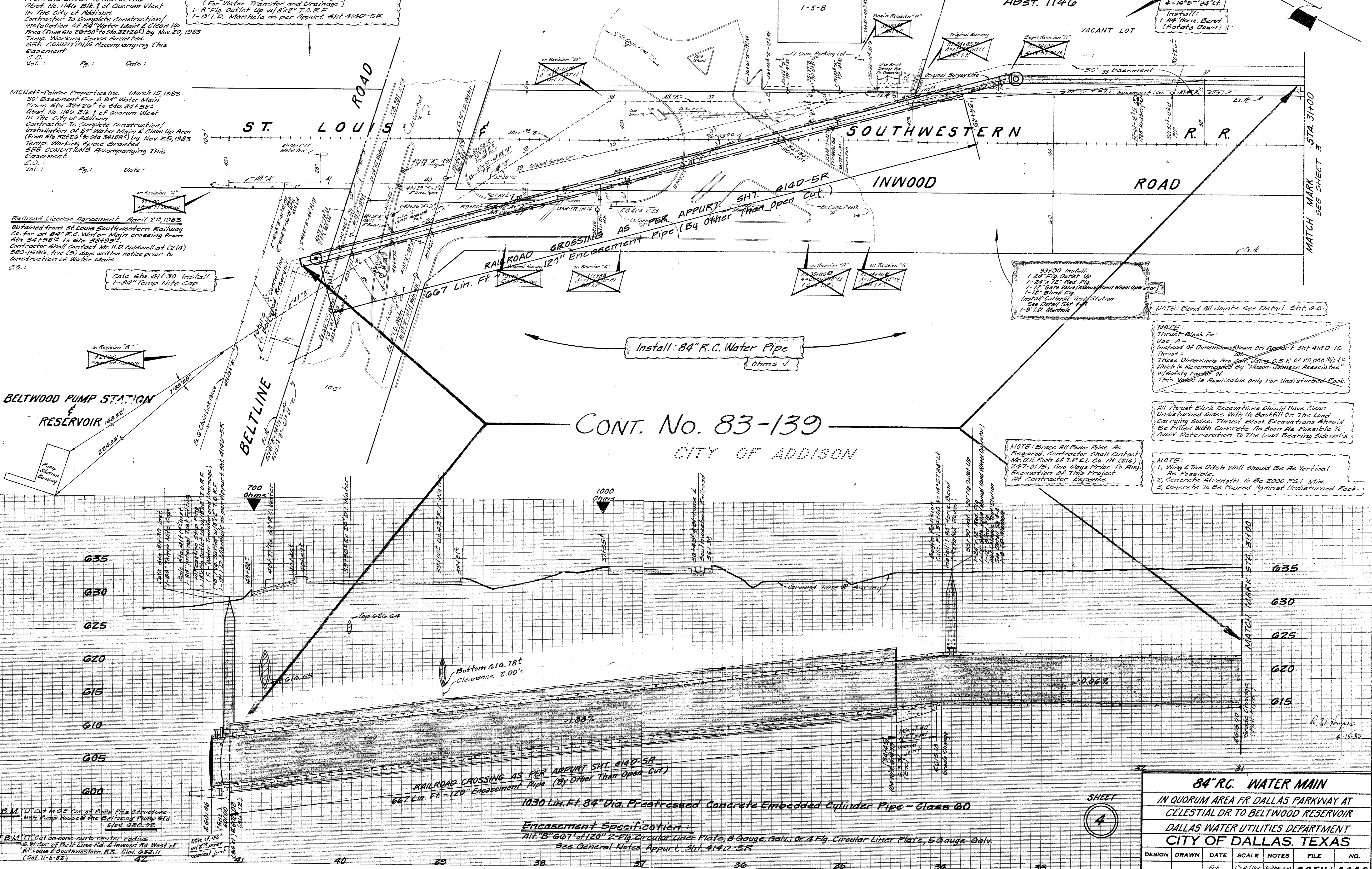
Calc. Sta. 41+14[±] Install:
 1-84" Internal Test Fitting w/ Reaction Stop Ring
 1-18" Flg. Outlet Up. w/ 1/8" x 8" Red. Flg. w/ 8x2" T.O.R.F.
 (For Water Transfer and Drainage)
 1-8" Flg. Outlet Up. w/ 8x2" T.O.R.F.
 1-2" I.D. Manhole as per Appurt. Sht. 4140-5R

McNeff-Palmer Properties Inc. March 15, 1983
 30' Easement For A 84" Water Main
 From Sta. 324+50 to Sta. 344+50
 Abst. No. 1146 Blk. 1 of Quorum West
 In The City of Addison.
 Contractor To Complete Construction/
 Installation of 84" Water Main & Clean Up Area
 (From Sta. 324+50 to Sta. 344+50) by Nov. 25, 1983
 Temp. Working Space Granted.
 SEE CONDITIONS Accompanying This
 Easement.
 C.O.
 Vol. Pg. Date:

Railroad License Agreement April 29, 1983
 Obtained from St. Louis Southwestern Railway
 Co. for an 84" R.C. Water Main crossing from
 Sta. 344+50 to Sta. 344+59.
 Contractor shall contact Mr. H.D. Caldwell at (214)
 980-1590, Attn: (2) days written notice prior to
 construction of Water Main.
 C.O.:

Calc. Sta. 41+30 Install
 1-84" Temp. Nite Cap

BELTWOOD PUMP STATION
 & RESERVOIR



Install: 84" R.C. Water Pipe
 Ohms ✓

CONT. No. 83-139
 CITY OF ADDISON

NOTE: Bond All Joints See Detail Sht. 4-A

NOTE: Thrust Block For Use A = Instead Of Dimensions Shown On Appurt. Sht. 4140-15 Thrust = These Dimensions Are Calc. Using a B.P. of 20,000 lb/ft² Which Is Recommended By "Mason-Johnson Associates" w/ Safety Factor of This Value Is Applicable Only For Undisturbed Rock.

All Thrust Block Excavations Should Have Clean Undisturbed Sides With No Backfill On The Load Carrying Sides. Thrust Block Excavations Should Be Filled With Concrete As Soon As Possible To Avoid Deterioration To The Load Bearing Sidewalls

NOTE: 1. Wire & Toe Ditch Wall Should Be As Vertical As Possible. 2. Concrete Strength To Be 2000 P.S.I. Min. 3. Concrete To Be Poured Against Undisturbed Rock.

NOTE: Brace All Power Poles As Required. Contractor Shall Contact Mr. O.E. Rich of T.P. & L. Co. At (214) 247-0175, Two Days Prior To Any Excavation Of This Project. At Contractor Expense

Begin Revision "A"
 Calc. P.I. 344+00
 4-1/2" x 8" Red. Flg. w/ 8x2" T.O.R.F.
 (For Water Transfer and Drainage)
 1-8" Flg. Outlet Up. w/ 8x2" T.O.R.F.
 1-2" I.D. Manhole as per Appurt. Sht. 4140-5R

B.M. "D" Cut in S.E. Cor. of Pump Pits Structure
 near Pump House @ the Beltwood Pump Sta.
 Elev. 630.02

T.B.M. "D" Cut on conc. curb center radius
 S.W. Cor. of Belt Line Rd. & Inwood Rd. West of
 St. Louis & Southwestern R.R. Elev. 632.11
 (Set V-8-88)

RAILROAD CROSSING AS PER APPURT. SHT. 4140-5R
 667 Lin. Ft. - 120" Encasement Pipe (By Other Than Open Cut)
 1030 Lin. Ft. 84" Dia. Prestressed Concrete Embedded Cylinder Pipe - Class 60

Encasement Specification:
 Alt. "B" 667' of 120" 2-Fig. Circular Liner Plate, 8 Gauge. Galv. or 4 Fig. Circular Liner Plate, 5 Gauge Galv.
 See General Notes Appurt. Sht. 4140-5R

84" R.C. WATER MAIN						
IN QUORUM AREA FR DALLAS PARKWAY AT CELESTIAL DR. TO BELTWOOD RESERVOIR						
DALLAS WATER UTILITIES DEPARTMENT						
CITY OF DALLAS, TEXAS						
DESIGN	DRAWN	DATE	SCALE	NOTES	FILE	NO.
S. Regai	S. Perez	Feb. 1983	1"=40' Hor. 1"=6' Vert.	Smithman #640-15	G85W	GG0C

SHEET
 4

#7WAZ12