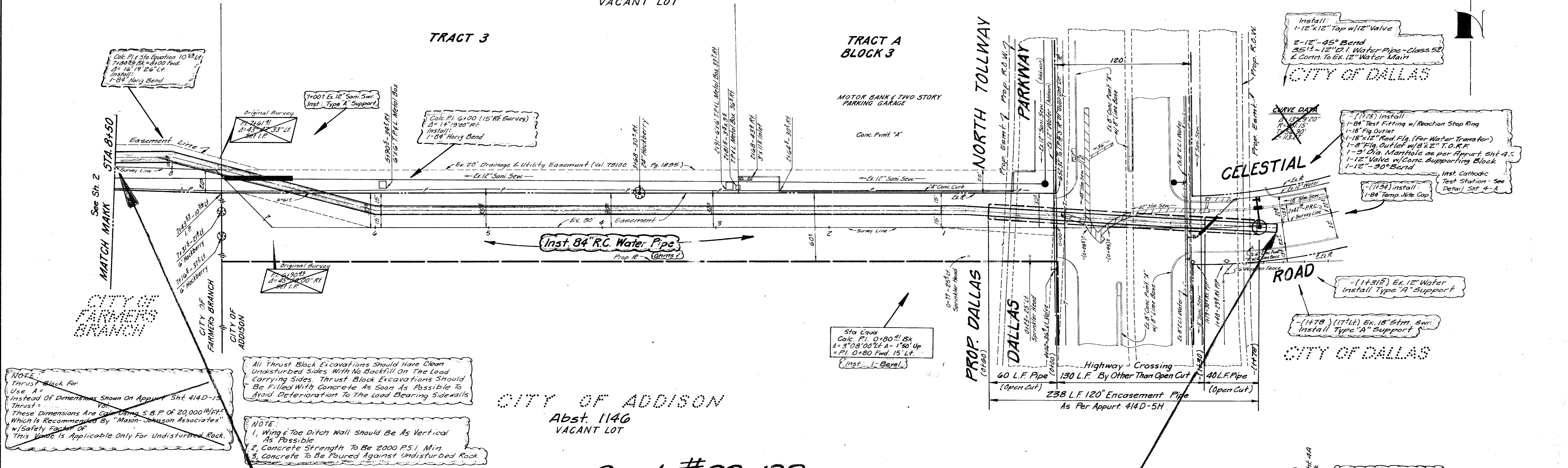


**NOTE:**  
Thrust Block For Use A = Instead Of Dimensions Shown On Appurt. Sht. 414D-15 Thrust = These Dimensions Are Calc. Using S.B.P. of 20,000 Lb/Ft<sup>2</sup> Which Is Recommended By "Mason-Johnson Associates" w/ Safety Factor of 1.5. This Value Is Applicable Only For Undisturbed Rock.

Vantage Properties, Inc. March 11, 1983  
30' Easement For A 84" Water Main From Sta. 0+00 to Sta. 6+61.5  
Abst. 1146 In The City of Addison  
Temp. Working Space Granted  
See Conditions Accompanying This Easement.  
C.O. Pg. Date:

Santa Fe Land Improvement Co. April 17, 1983  
Easement For A 84" Water Main From Sta. 7+03.2 to Sta. 13+72.5  
Abst. 1146, Bk. 3 of Quorum West In The City of Addison  
Temp. Working Space Granted  
See Conditions Accompanying This Easement.  
C.O. Pg. Date:

Abst. 1146  
CITY OF ADDISON  
VACANT LOT

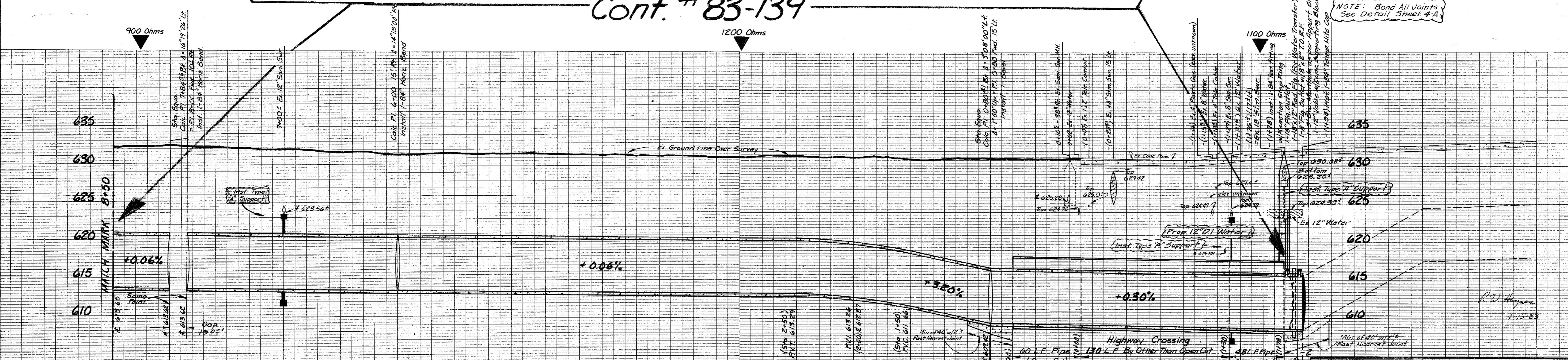


**NOTE:**  
Thrust Block For Use A = Instead Of Dimensions Shown On Appurt. Sht. 414D-15 Thrust = These Dimensions Are Calc. Using S.B.P. of 20,000 Lb/Ft<sup>2</sup> Which Is Recommended By "Mason-Johnson Associates" w/ Safety Factor of 1.5. This Value Is Applicable Only For Undisturbed Rock.

All Thrust Block Excavations Should Have Clean Undisturbed Sides With No Backfill On The Load Carrying Sides. Thrust Block Excavations Should Be Filled With Concrete As Soon As Possible To Avoid Deterioration To The Load Bearing Side Walls.  
**NOTE:**  
1. Wing & Toe Ditch Wall Should Be As Vertical As Possible.  
2. Concrete Strength To Be 2000 P.S.I. Min.  
3. Concrete To Be Poured Against Undisturbed Rock

CITY OF ADDISON  
Abst. 1146  
VACANT LOT

Cont. # 83-139



1030 Lin. Ft. 84" Dia. Prestressed Concrete Embedded Cylinder Pipe - Class 60

**Encasement Specification:**  
Alt. B' 238 of 114" 2-Flg. Circular Liner Plate, 8 Gauge, Galv., Or 4-Flg. Circular Liner Plate, 8 Gauge Galv.  
See General Notes Appurt. Sht. 414D-5H

**84" R.C. WATER MAIN**  
IN QUORUM AREA FR. DALLAS PARKWAY AT  
CELESTIAL DR. TO BELTWOOD RESERVOIR  
DALLAS WATER UTILITIES DEPARTMENT  
CITY OF DALLAS, TEXAS

DESIGN	DRAWN	DATE	SCALE	NOTES	FILE	NO.
S. Regal	S. Perez M. Burke	Feb. 1983	1"=40' Horiz 1"=8' Vert	Smithman Rd 4/15	685W	660C

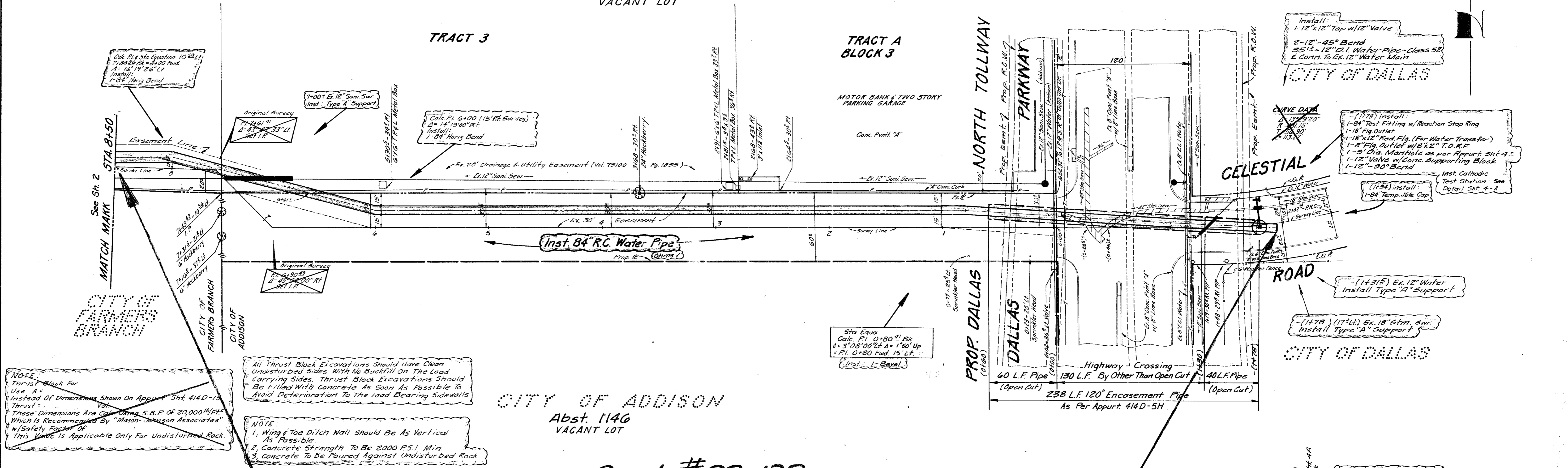
**B.M.** If Cut on Conc. Curb of Parking Lot of Texas Commerce Motor Bank on N. Side of Dallas Parkway (Opposite City Produce) Sta. 0+00.00 (Elev. 632.60)

**NOTE:**  
Thrust Block For Use A = Instead Of Dimensions Shown On Appurt. Sht. 414D-15 Thrust =  
These Dimensions Are Calc. Using S.B.P. of 20,000 Lb/Ft<sup>2</sup> Which Is Recommended By "Mason-Johnson Associates" w/ Safety Factor of 1.5.  
This Value Is Applicable Only For Undisturbed Rock.

Vantage Properties, Inc. March 11, 1983  
30' Easement For A 84" Water Main From Sta. 0+00 to Sta. 6+61.5  
Abst. 1146 In The City of Addison  
Temp. Working Space Granted  
See Conditions Accompanying This Easement.  
C.O. Pg. Date:

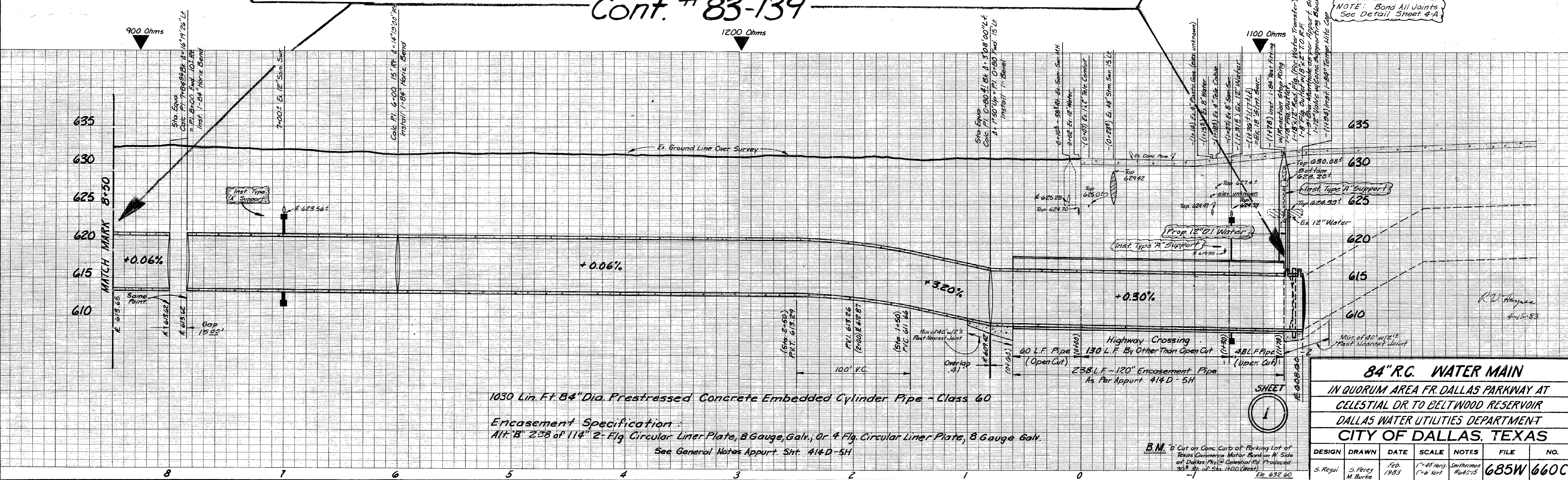
Santa Fe Land Improvement Co. April 17, 1983  
Easement For A 84" Water Main From Sta. 7+03.2 to Sta. 13+72.5  
Abst. 1146 Bk. 3 of Quorum West In The City of Addison  
Temp. Working Space Granted  
See Conditions Accompanying This Easement.  
C.O. Pg. Date:

Abst. 1146  
CITY OF ADDISON  
VACANT LOT



CITY OF ADDISON  
Abst. 1146  
VACANT LOT

Cont. # 83-139



**84" R.C. WATER MAIN**  
IN QUORUM AREA FR. DALLAS PARKWAY AT  
CELESTIAL DR. TO BELTWOOD RESERVOIR  
DALLAS WATER UTILITIES DEPARTMENT  
CITY OF DALLAS, TEXAS

DESIGN	DRAWN	DATE	SCALE	NOTES	FILE	NO.
S. Regal	S. Perez M. Burke	Feb. 1983	1"=40' Horiz 1"=8' Vert	Smithman Rd 4/15	685W	660C

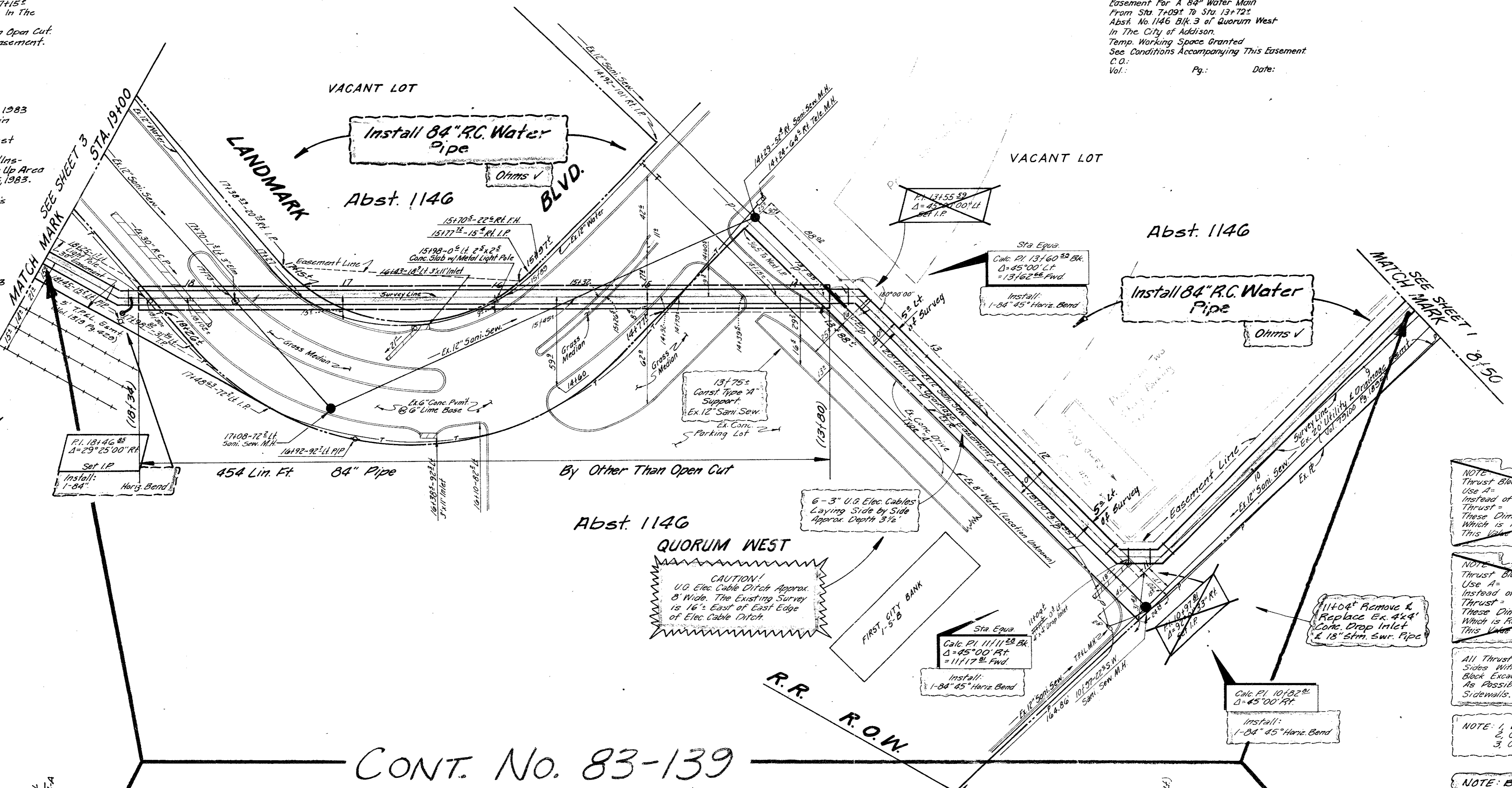
**B.M.** If Cut on Conc. Curb of Parking Lot of Texas Commerce Motor Bank on N. Side of Dallas Parkway (Opposite City Produce) 30' E. of Sta. 1100 (West) Ele. 632.60

Wen-Clay International, Inc. March 15, 1983  
 A Strip of Land from Sta. 15+97.5 to Sta. 17+15.5  
 Abst. No. 1146 Blk. 2 of Quorum West in The  
 City of Addison  
 Installation of Water Main, By Other Than Open Cut  
 See Conditions Accompanying This Easement.  
 C.O. Vol. Pg. Date:

Landmark Partners, March 15, 1983  
 A 30' Easement For A 84" Water Main  
 From Sta. 18+24 to Sta. 20+50  
 Abst. No. 1146 Blk. 1 of Quorum West  
 in The City of Addison.  
 Contractor To Complete Construction/Ins-  
 tallation of 84" Water Main & Clean Up Area  
 (From Sta. 18+24 to Sta. 20+50) by Oct. 15, 1983.  
 Temp. Working Space Granted.  
 SEE CONDITIONS Accompanying This  
 Easement.  
 C.O. Vol. Pg. Date:

First City Bank Corp. of Texas, Inc. March 15, 1983  
 A Triangular Tract of Land from Sta.  
 15+88 to Sta. 14+77  
 Abst. No. 1146 Blk. 3 of Quorum West  
 in The City of Addison.  
 Installation of Water Main, By Other Than  
 Open Cut  
 See Conditions Accompanying This  
 Easement.  
 C.O. Vol. Pg. Date:

Santa Fe Land Improvement Co. April 12, 1983  
 Easement For A 84" Water Main  
 From Sta. 7+09 to Sta. 13+72  
 Abst. No. 1146 Blk. 3 of Quorum West  
 in The City of Addison.  
 Temp. Working Space Granted  
 See Conditions Accompanying This Easement.  
 C.O. Vol. Pg. Date:



CITY OF ADDISON

NOTE: It Will Be The Contractors  
 Responsibility To Use Sheeting To  
 Prevent The Exist. 12" Gas, Sewer  
 Line Between Sta. 10+97 to Sta.  
 13+75 From Falling Into The Water  
 Main Excavation. No Special Pay  
 Will Be Provided For This Item, But  
 The Cost Will Be Bid In Such Items  
 As Are Provided.

NOTE: Brace All Power Poles As Required  
 Contractor Shall Contact Mr. D.E. Rich, CE  
 T.F.L. Co. At (214) 247-0175, Two Days  
 Prior To Any Excavation Of This Project.  
 At Contractor Expense

NOTE: Thrust Block For 20' 45" Bend at Sta. 10+68  
 Use A  
 Instead of Dimensions Shown On Appant. Sht. 414D-15  
 Thrust =  
 These Dimensions Are Valid Using S&P of 20,000 14/ft.  
 Which is Recommended By "M-J" w/Safety Factor of  
 This Value is Applicable Only For Undisturbed Rock

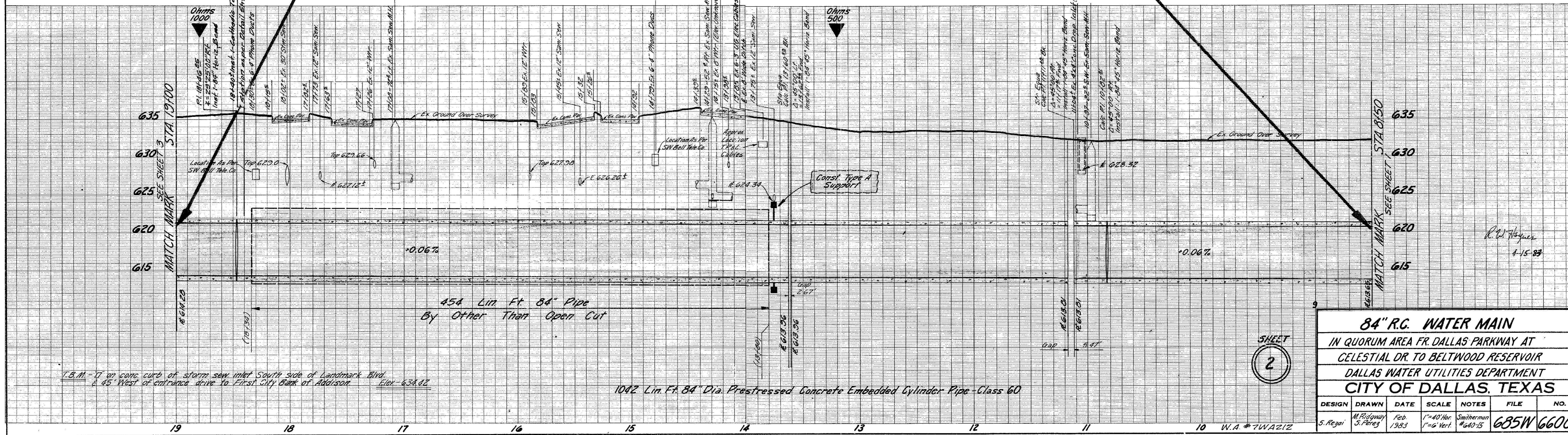
NOTE: Thrust Block For 45" Bends at Sta. 10+32, 11+11, 11+12, 11+13  
 Use A  
 Instead of Dimensions Shown On Appant. Sht. 414D-15  
 Thrust =  
 These Dimensions Are Valid Using S&P of 20,000 14/ft.  
 Which is Recommended By "M-J" w/Safety Factor of  
 This Value is Applicable Only For Undisturbed Rock

All Thrust Block Excavations Should Have Clean Undisturbed  
 Sides With No Backfill On The Load Carrying Sides. Thrust  
 Block Excavations Should Be Filled With Concrete As Soon  
 As Possible To Avoid Deterioration To The Load Bearing  
 Sidewalls.

NOTE: 1. Wing & Toe Ditch Walls Should Be As Vertical As Possible.  
 2. Concrete Strength To Be 2000 P.S.I. Min  
 3. Concrete To Be Poured Against Undisturbed Rock

NOTE: Bond All Joints See Detail Sheet 4-A

CONT. No. 83-139



<b>84" R.C. WATER MAIN</b>						
IN QUORUM AREA FR. DALLAS PARKWAY AT						
CELESTIAL DR TO BELTWOOD RESERVOIR						
DALLAS WATER UTILITIES DEPARTMENT						
CITY OF DALLAS, TEXAS						
DESIGN	DRAWN	DATE	SCALE	NOTES	FILE	NO.
S. Rejai	M. Ridgway S. Perez	Feb. 1983	1"=40' Hor. 1"=6' Vert.	Smitherman #640-15	685W	660C

SHEET  
2

R. W. Hayes  
4-15-83

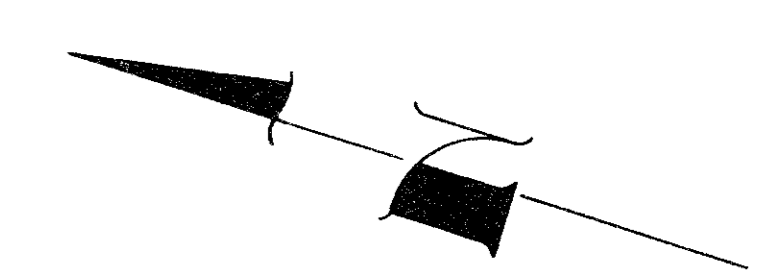
T.B.M. - 7' on conc. curb of storm sewer inlet South side of Landmark Blvd.  
 & 45' West of entrance drive to First City Bank of Addison. Elev. 634.82

1042 Lin. Ft. 84" Dia. Prestressed Concrete Embedded Cylinder Pipe - Class 60

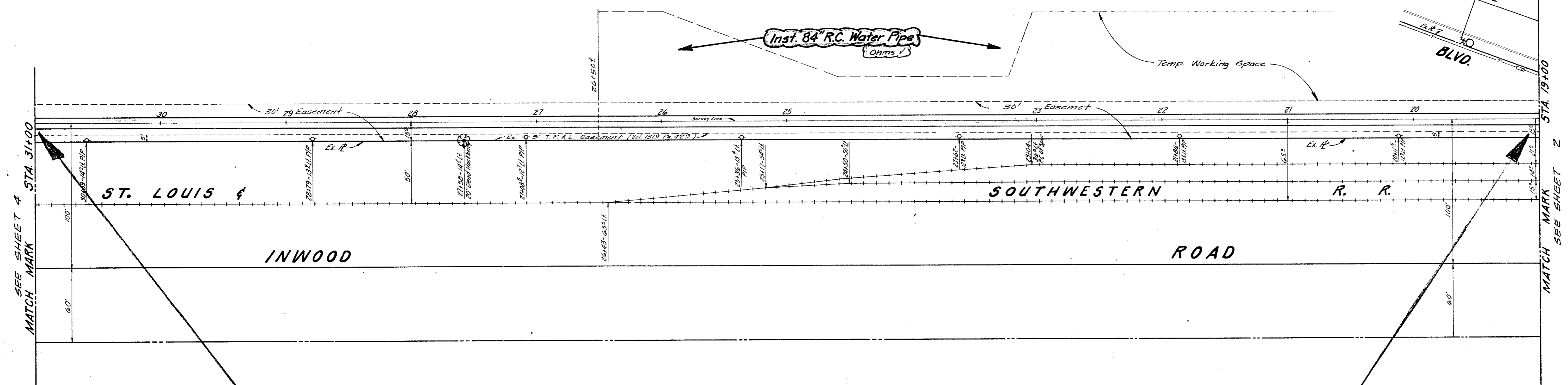
Landmark Partners, March 15, 1983  
 30' Easement for 84" Water Main  
 From Sta. 18+26.2 to Sta. 26+50.7  
 Abst. No. 1146 Blk. 1 of Quorum West  
 In The City of Addison  
 Contractor To Complete Construction/  
 Installation of 84" Water Main & Clean Up Area  
 (From Sta. 18+26.2 to Sta. 26+50.7) By Oct. 15, 1983  
 Temp. Working Space Granted.  
 SEE CONDITIONS Accompanying This  
 Easement.  
 C.O. :  
 Vol. : Pg. : Date :

MENeff-Palmer Properties Inc. March 15, 1983  
 30' Easement for 84" Water Main  
 From Sta. 26+50.7 to Sta. 32+26.2  
 Abst. No. 1146 Blk. 1 of Quorum West  
 In The City of Addison  
 Contractor To Complete Construction/  
 Installation of 84" Water Main & Clean Up Area  
 (From Sta. 26+50.7 to Sta. 32+26.2) By Nov. 20, 1983  
 Temp. Working Space Granted.  
 SEE CONDITIONS Accompanying  
 This Easement.  
 C.O. :  
 Vol. : Pg. : Date :

NOTE: Brace All Power Poles As Required.  
 Contractor Shall Contact Mr. D.E. Rich of  
 T.P. & L. Co. At (214) 247-0175, Two Days  
 Prior To Any Excavation Of This Project.  
 At Contractors Expense.

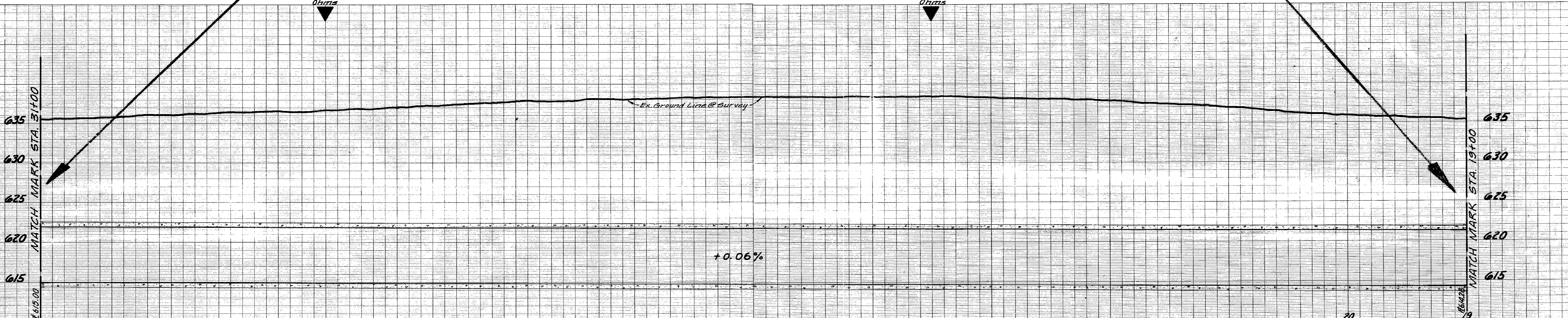


CITY OF ADDISON  
 VACANT LOT  
 Abst. 1146



CITY OF ADDISON  
 Cont. #83-139

NOTE: Bond All Joints See Detail Sht. 4-A



1200 Lin. Ft. 84" Dia. Prestressed Concrete Embedded Cylinder Pipe - Class 60

R.W. Hines  
 4/15/83

SHEET  
 3

<b>84" R.C. WATER MAIN</b>						
IN QUORUM AREA FR. DALLAS PARKWAY AT						
CELESTIAL DR. TO BELTWOOD RESERVOIR						
DALLAS WATER UTILITIES DEPARTMENT						
CITY OF DALLAS, TEXAS						
DESIGN	DRAWN	DATE	SCALE	NOTES	FILE	NO.
S. Regal	S. Perez	Feb. 1983	1"=40' Hor. 1"=6' Vert.	Smitherman #440-15	685W	660C

T.B.M. "D" Cut on conc. curb, center radius S.W. Cor. of Belt Line Rd.  
 & Inwood Rd. west of St. Louis & Southwestern Railroad Elev. @ 32.11 (Oct 11-8-82)  
 B.M. "C" Cut in S.E. Cor. of Pump Pits Structure ben Pump House @  
 the Beltwood Pump Station Elev. @ 30.02

McNeff-Palmer Properties Inc. March 15, 1983  
 30' Easement For A 84" Water Main  
 From Sta. 32450 to Sta. 34450  
 Abst. No. 1146 Blk. 1 of Quorum West  
 In The City of Addison.  
 Contractor To Complete Construction/  
 Installation of 84" Water Main & Clean Up  
 Area (From Sta. 32450 to Sta. 34450) by Nov. 20, 1983  
 Temp. Working Space Granted.  
 SEE CONDITIONS Accompanying This  
 Easement.  
 C.O.  
 Vol. Pg. Date:

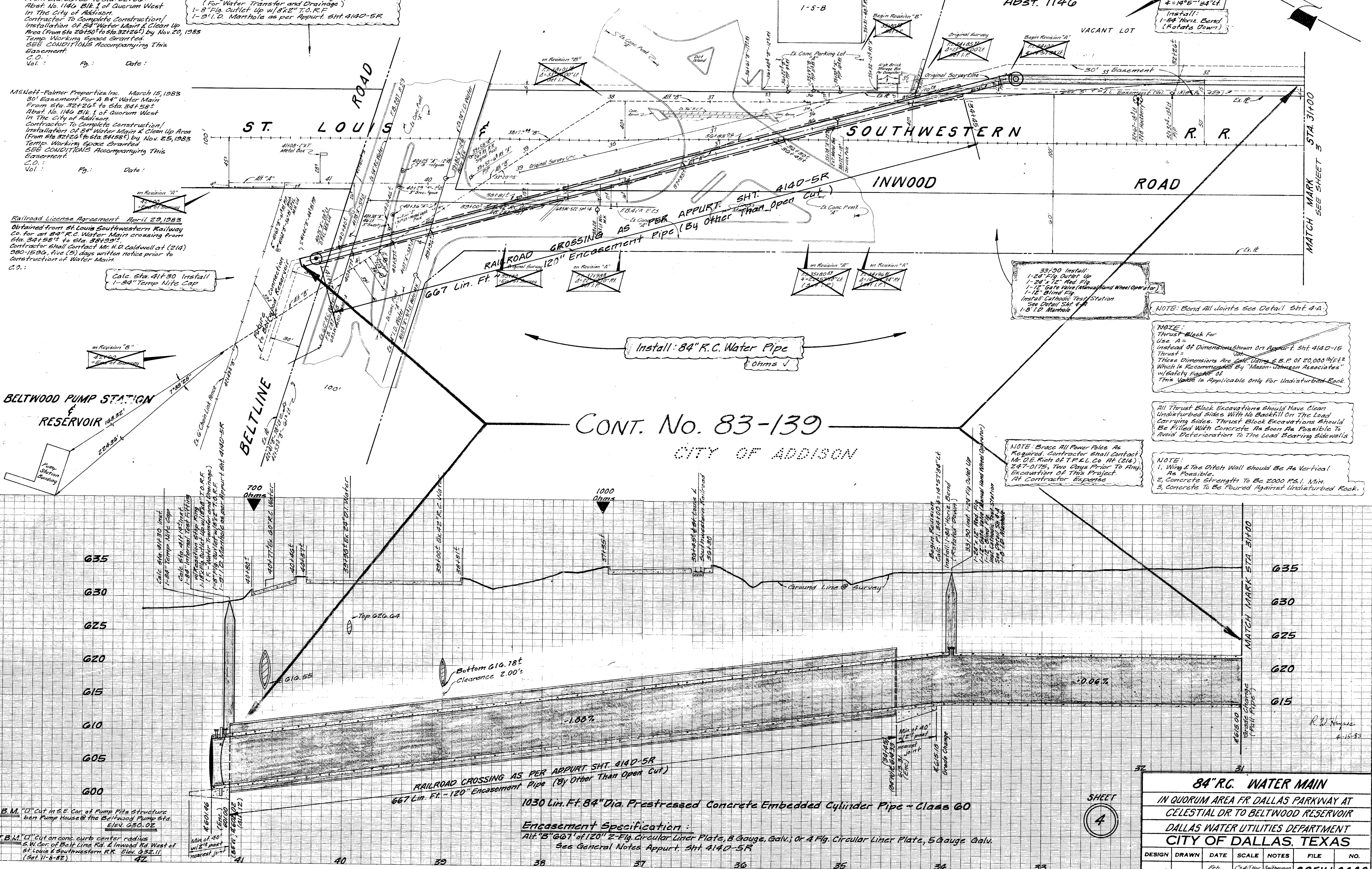
Calc. Sta. 41414<sup>±</sup> Install:  
 1-84" Internal Test Fitting w/ Reaction Stop Ring  
 1-18" Flg. Outlet Up. w/ 1/8" x 8" Red. Flg. w/ 8x2" T.O.R.F.  
 (For Water Transfer and Drainage)  
 1-8" Flg. Outlet Up. w/ 8x2" T.O.R.F.  
 1-2" I.D. Manhole as per Appurt. Sht. 4140-5R

McNeff-Palmer Properties Inc. March 15, 1983  
 30' Easement For A 84" Water Main  
 From Sta. 32450 to Sta. 34450  
 Abst. No. 1146 Blk. 1 of Quorum West  
 In The City of Addison.  
 Contractor To Complete Construction/  
 Installation of 84" Water Main & Clean Up Area  
 (From Sta. 32450 to Sta. 34450) by Nov. 25, 1983  
 Temp. Working Space Granted.  
 SEE CONDITIONS Accompanying This  
 Easement.  
 C.O.  
 Vol. Pg. Date:

Railroad License Agreement April 29, 1983  
 Obtained from St. Louis Southwestern Railway  
 Co. for an 84" R.C. Water Main crossing from  
 Sta. 34450 to Sta. 34459.  
 Contractor shall contact Mr. H.D. Caldwell at (214)  
 980-1590, Attn: (214) days written notice prior to  
 construction of Water Main.  
 C.O.:

Calc. Sta. 41430 Install  
 1-84" Temp. Nite Cap

BELTWOOD PUMP STATION  
 & RESERVOIR



Install: 84" R.C. Water Pipe  
 Ohms ✓

CONT. No. 83-139  
 CITY OF ADDISON

NOTE: Bond All Joints See Detail Sht. 4-A

NOTE: Thrust Block For Use A = Instead Of Dimensions Shown On Appurt. Sht. 4140-15 Thrust = These Dimensions Are Calc. Using a B.P. of 20,000 lb/ft<sup>2</sup> Which Is Recommended By "Mason-Johnson Associates" w/ Safety Factor of This Value Is Applicable Only For Undisturbed Rock.

All Thrust Block Excavations Should Have Clean Undisturbed Sides With No Backfill On The Load Carrying Sides. Thrust Block Excavations Should Be Filled With Concrete As Soon As Possible To Avoid Deterioration To The Load Bearing Sidewalls

NOTE: Brace All Power Poles As Required. Contractor Shall Contact Mr. O.E. Rich of T.P. & L. Co. At (214) 247-0175, Two Days Prior To Any Excavation Of This Project. At Contractor Expense

NOTE: 1. Wire & Toe Ditch Wall Should Be As Vertical As Possible. 2. Concrete Strength To Be 2000 P.S.I. Min. 3. Concrete To Be Poured Against Undisturbed Rock.

B.M. "D" Cut in S.E. Cor. of Pump Pits Structure  
 near Pump House @ the Beltwood Pump Sta.  
 Elev. 630.02

T.B.M. "D" Cut on conc. curb center radius  
 S.W. Cor. of Belt Line Rd. & Inwood Rd. West of  
 St. Louis & Southwestern R.R. Elev. 632.11  
 (Set V-8-88)

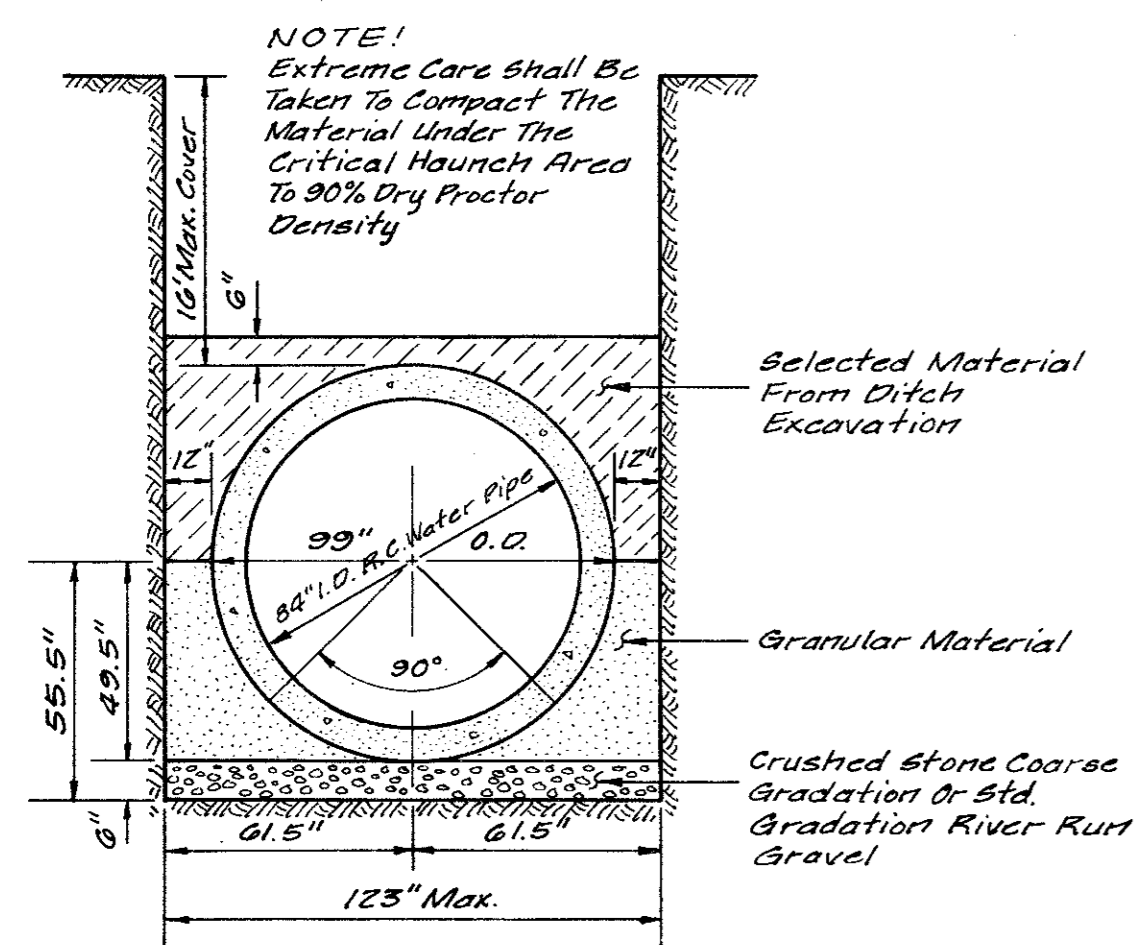
RAILROAD CROSSING AS PER APPURT. SHT. 4140-5R  
 667 Lin. Ft. - 120" Encasement Pipe (By Other Than Open Cut)  
 1030 Lin. Ft. 84" Dia. Prestressed Concrete Embedded Cylinder Pipe - Class 60

Encasement Specification:  
 Alt. "B" 667' of 120" Z-Fig. Circular Liner Plate, 8 Gauge. Galv. Or 4 Flg. Circular Liner Plate, 5 Gauge Galv.  
 See General Notes Appurt. Sht. 4140-5R

84" R.C. WATER MAIN						
IN QUORUM AREA FR DALLAS PARKWAY AT CELESTIAL DR. TO BELTWOOD RESERVOIR						
DALLAS WATER UTILITIES DEPARTMENT						
CITY OF DALLAS, TEXAS						
DESIGN	DRAWN	DATE	SCALE	NOTES	FILE	NO.
S. Regai	S. Perez	Feb. 1983	1"=40' Hor. 1"=6' Vert.	Smithman #640-15	G85W	GG0C

SHEET  
 4

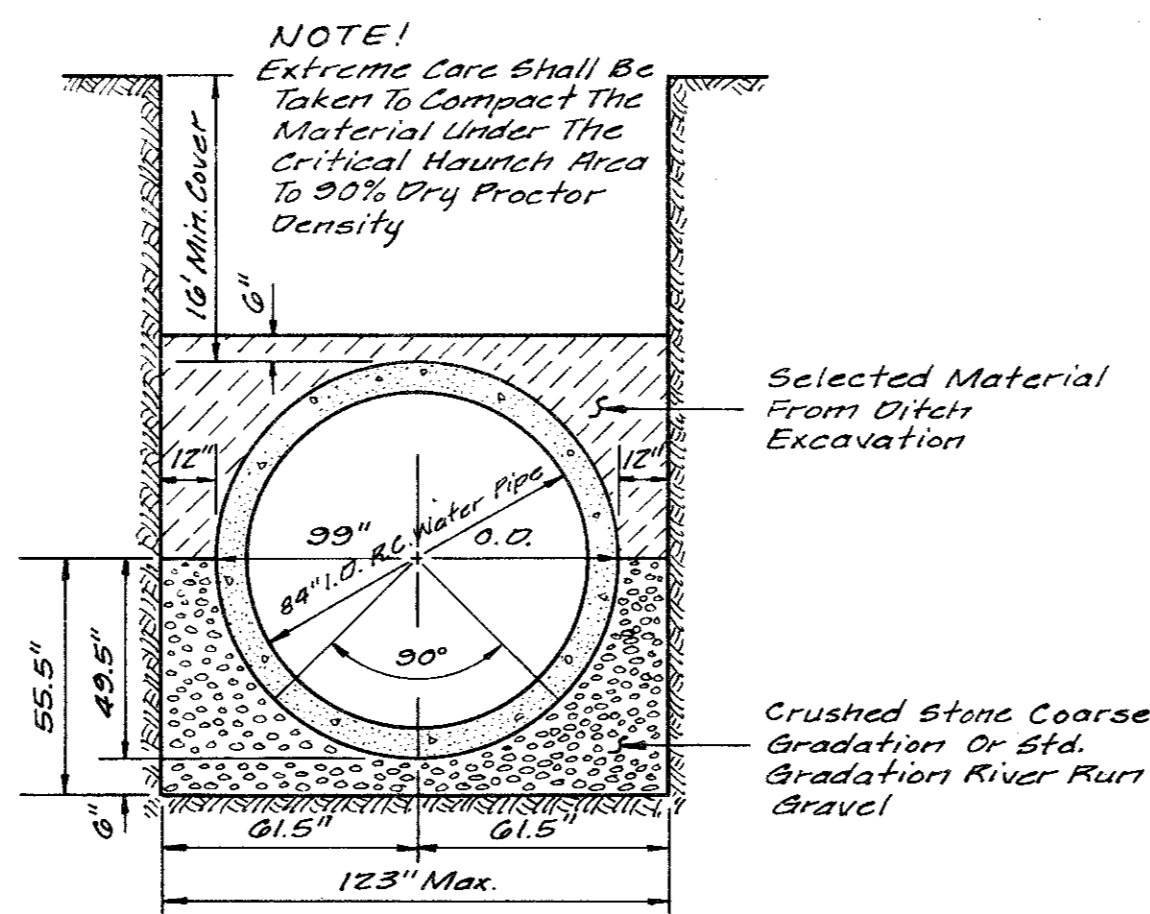
#7WAZ12



**Special Embedment For 84" R.C. Water Pipe**

**With 16' Or Less Of Cover Over Pipe**

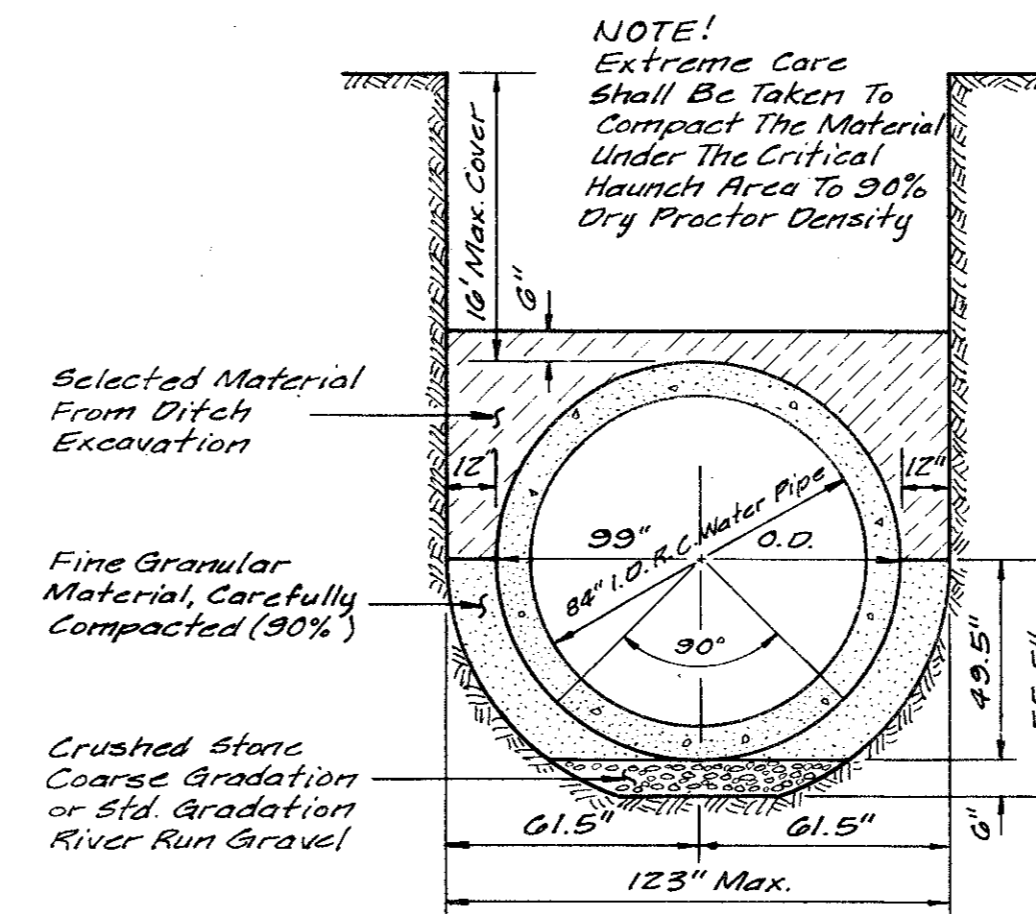
For 123" Ditch Embedment Quantities:  
19.0 C.Y. Of Crushed Stone, Coarse Gradation,  
Or Std. Gradation River Run Gravel Per 100 Ft.  
57.0 C.Y. Of Granular Material Per 100 Ft.



**Special Embedment For 84" R.C. Water Pipe**

**With 16' Or More Of Cover Over Pipe**

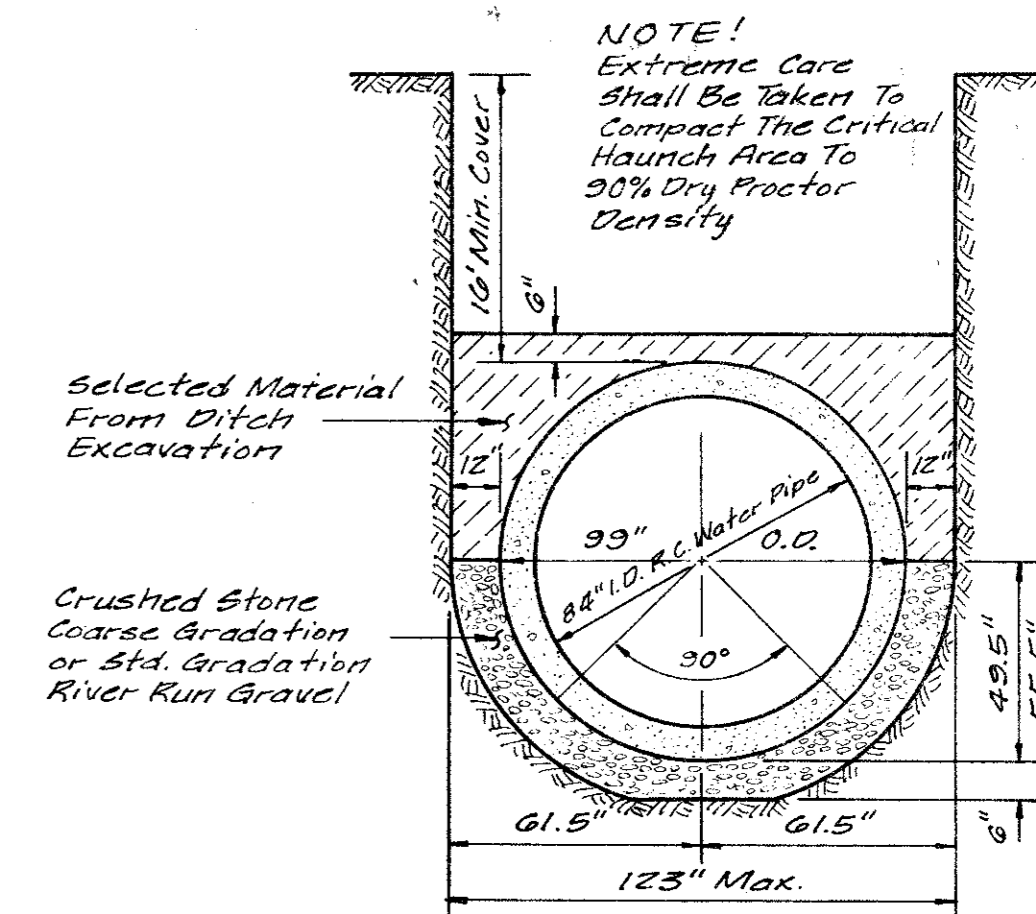
For 123" Ditch Embedment Quantities:  
70.0 C.Y. Of Crushed Stone, Coarse Gradation,  
Or Std. Gradation River Run Gravel Per 100 Ft.



**Alternate:  
Special Embedment For 84" R.C. Water Pipe**

**With 16' Or Less Of Cover Over Pipe**

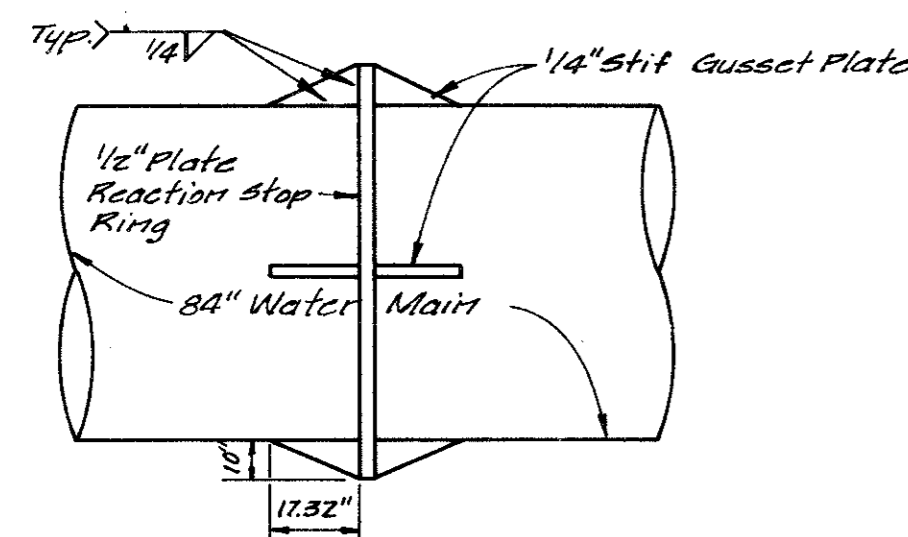
For 123" Ditch Embedment Quantities:  
9.8 C.Y. Of Crushed Stone, Coarse Gradation,  
Or Std. Gradation River Run Gravel Per 100 Ft.  
38.5 C.Y. Of Granular Material Per 100 Ft.



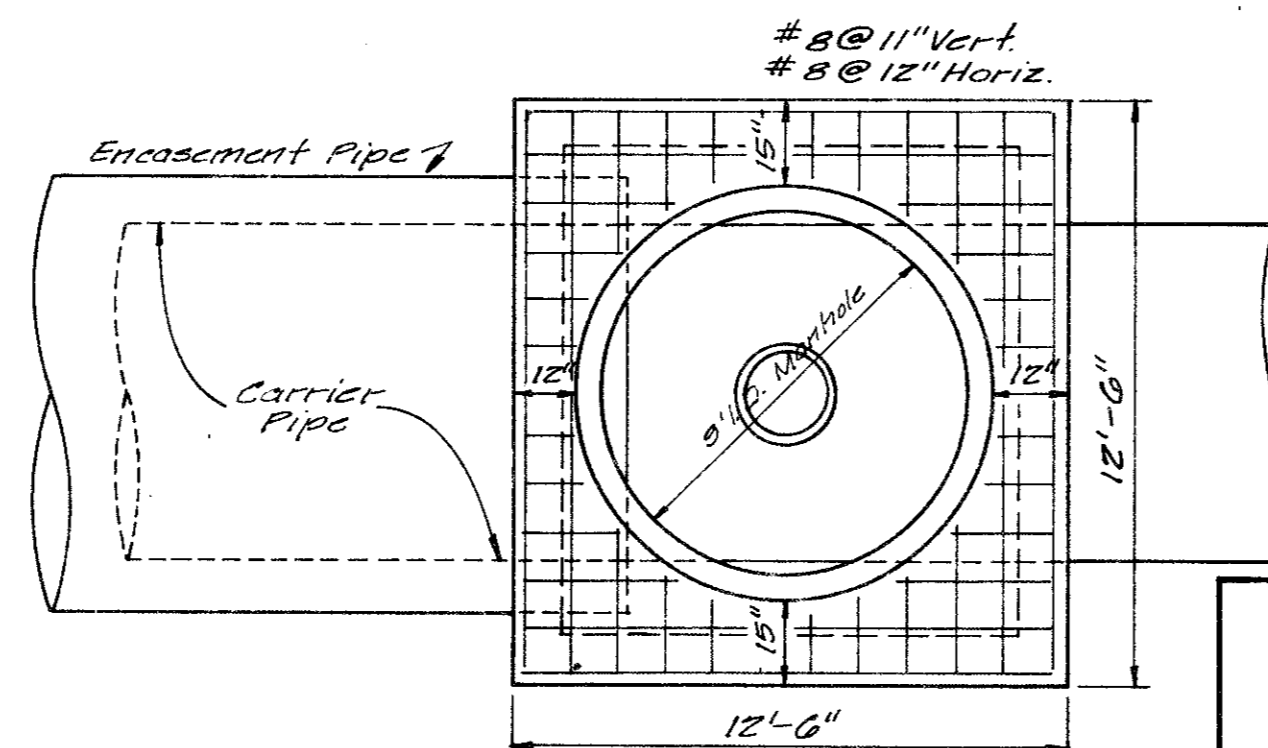
**Alternate:  
Special Embedment For 84" R.C. Water Pipe**

**With 16' Or More Of Cover Over Pipe**

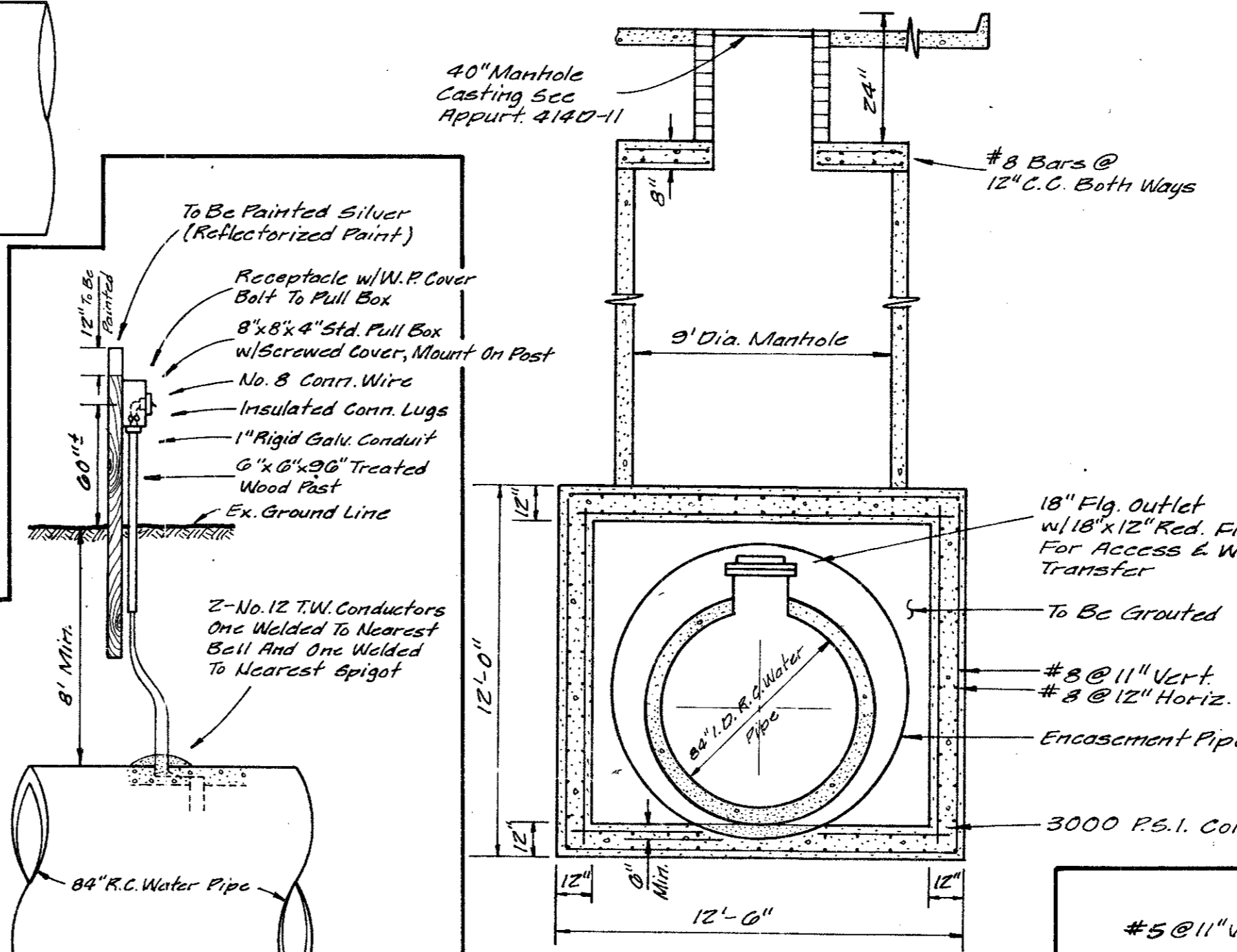
For 123" Ditch Embedment Quantities:  
48.3 C.Y. Of Crushed Stone, Coarse Gradation,  
Or Std. Gradation River Run Gravel Per 100 Ft.



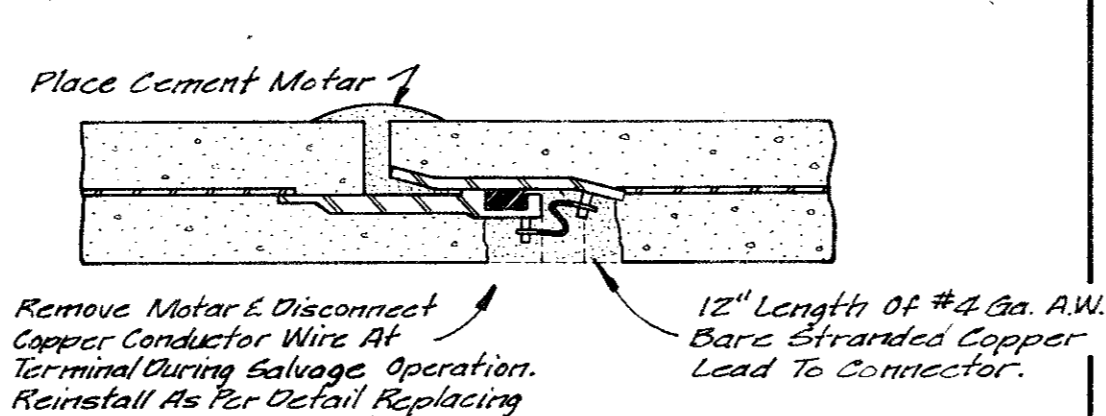
**Reaction Stop Ring & Gusset Plate**



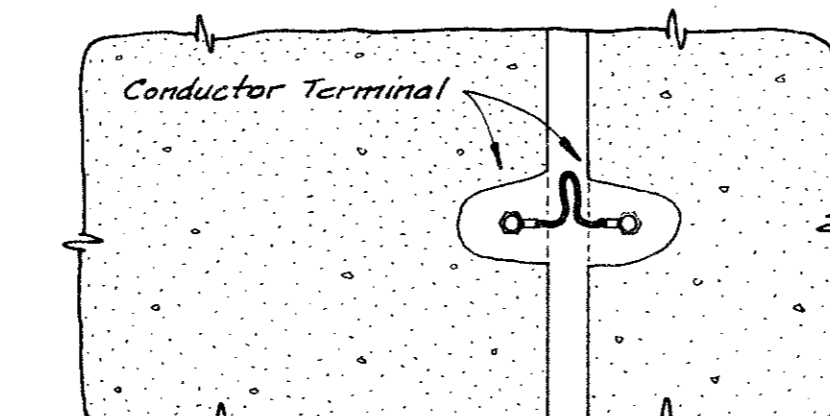
**Access Manhole Detail (Top View)  
Sta. - (1+78)**



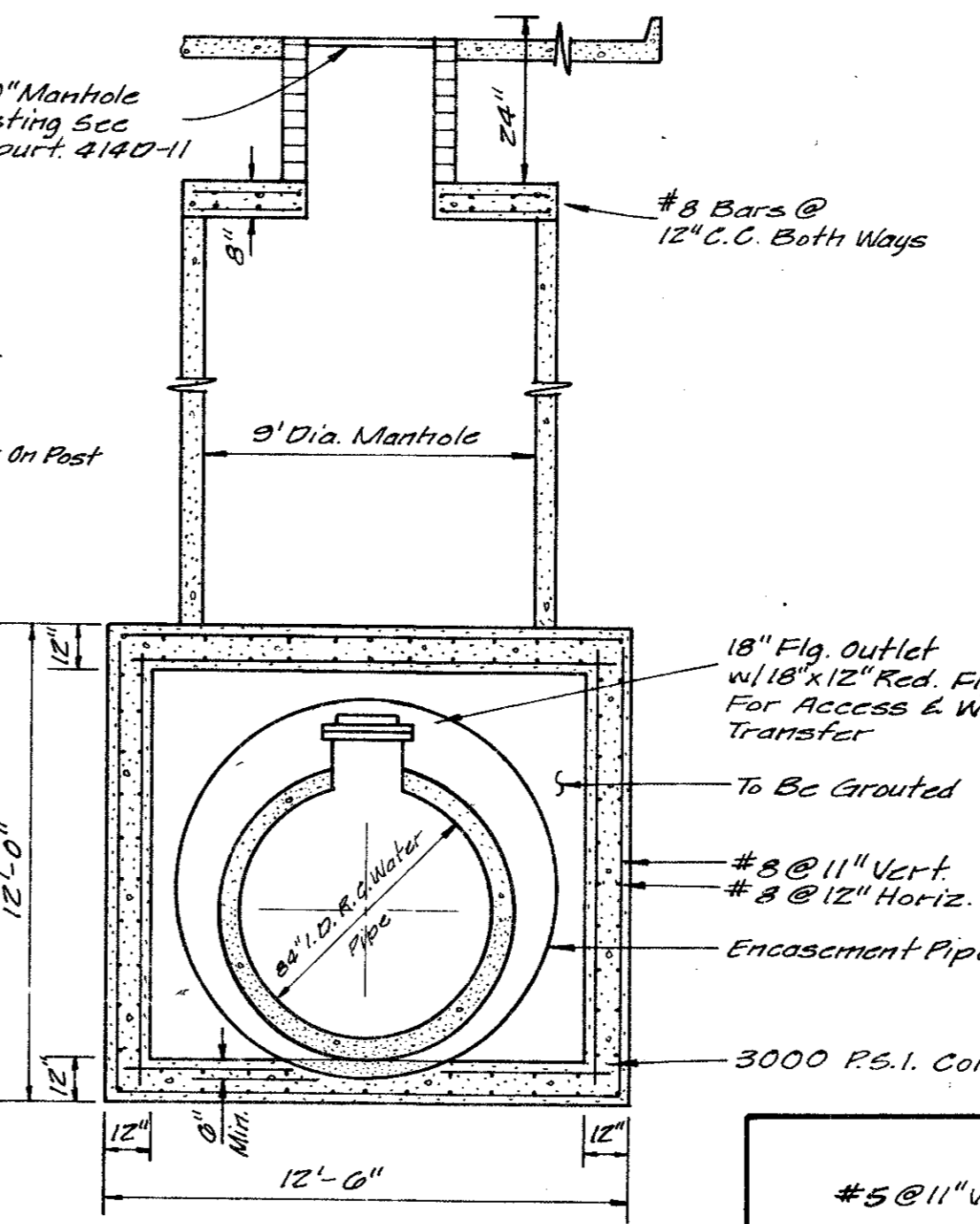
**Cathodic Test Station  
Sta. 18+40**



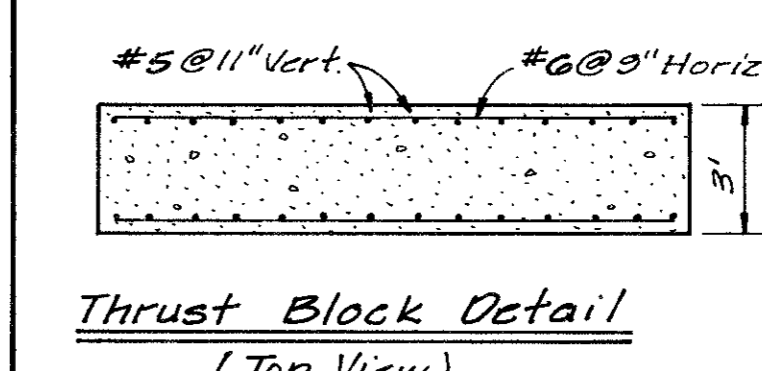
**Bonded Joint Detail (Side View)**



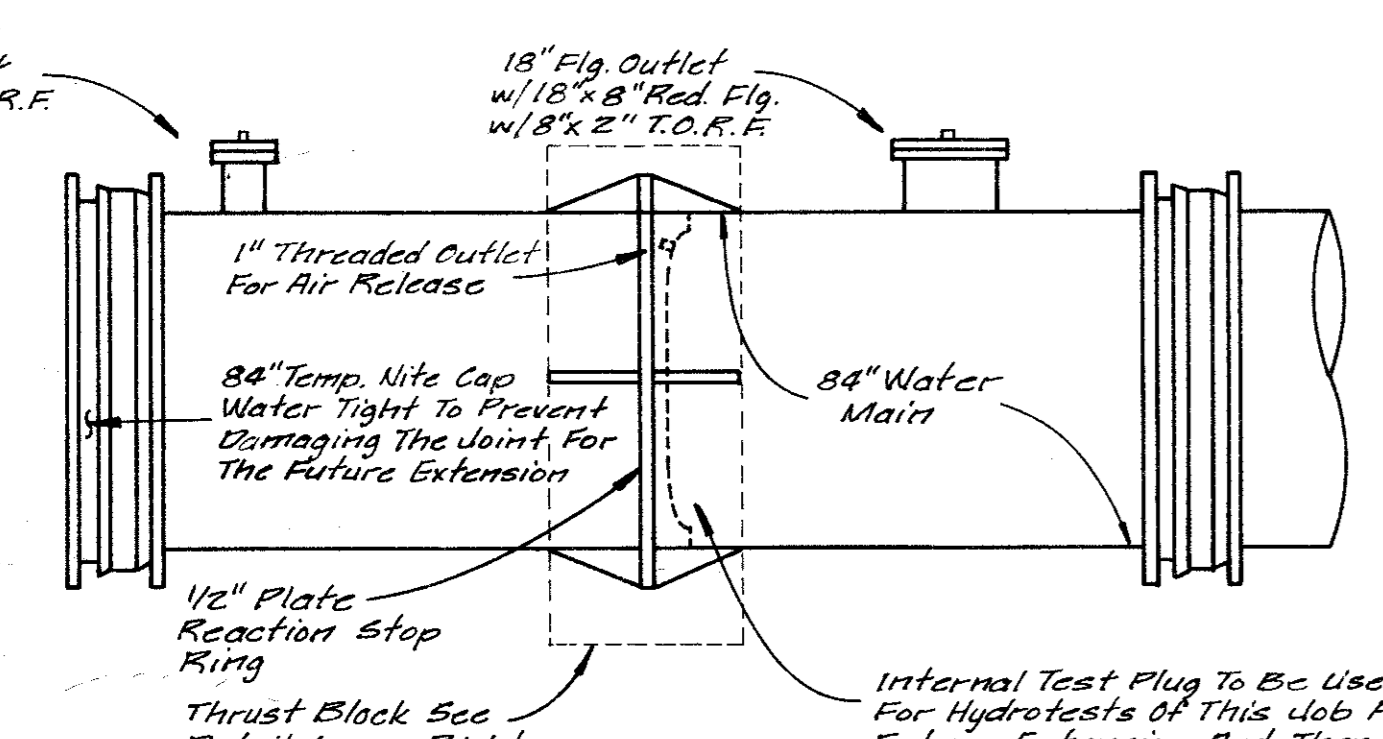
**Bonded Joint Detail (End View)**



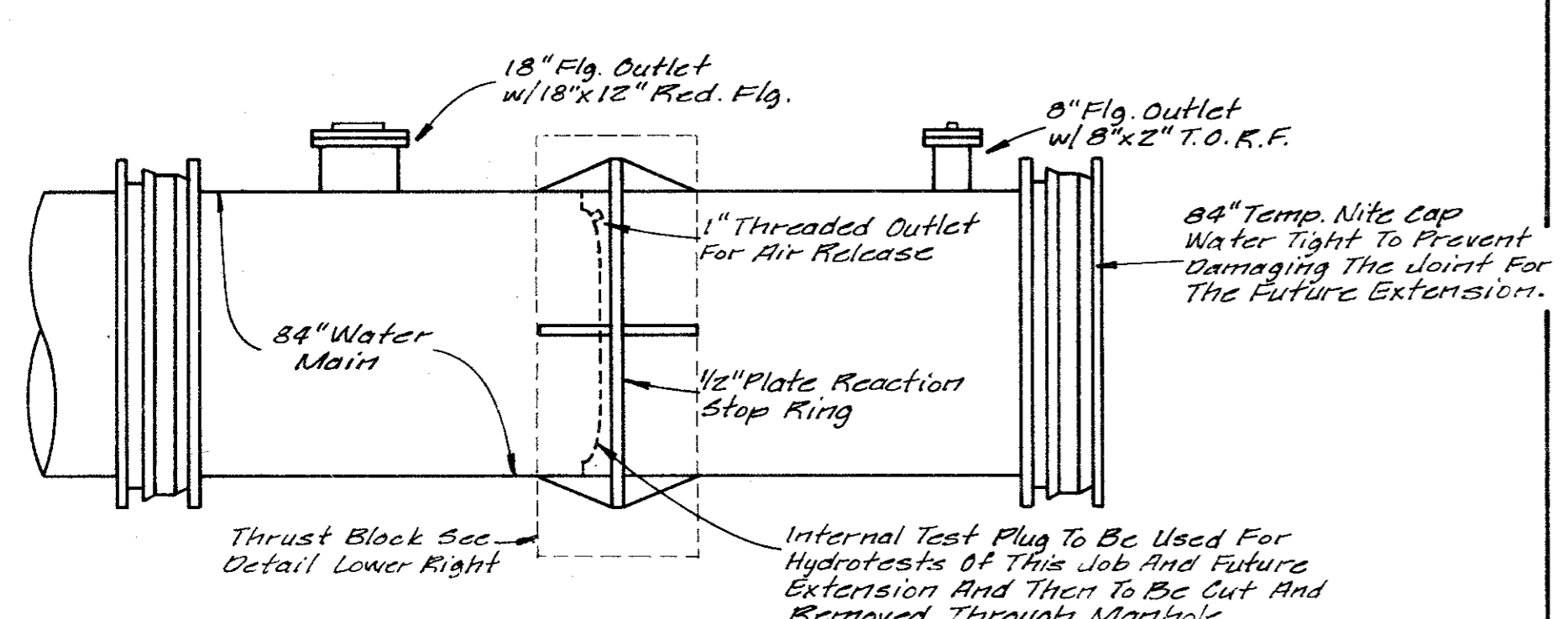
**Access Manhole Detail (End View)  
Sta. - (1+78)**



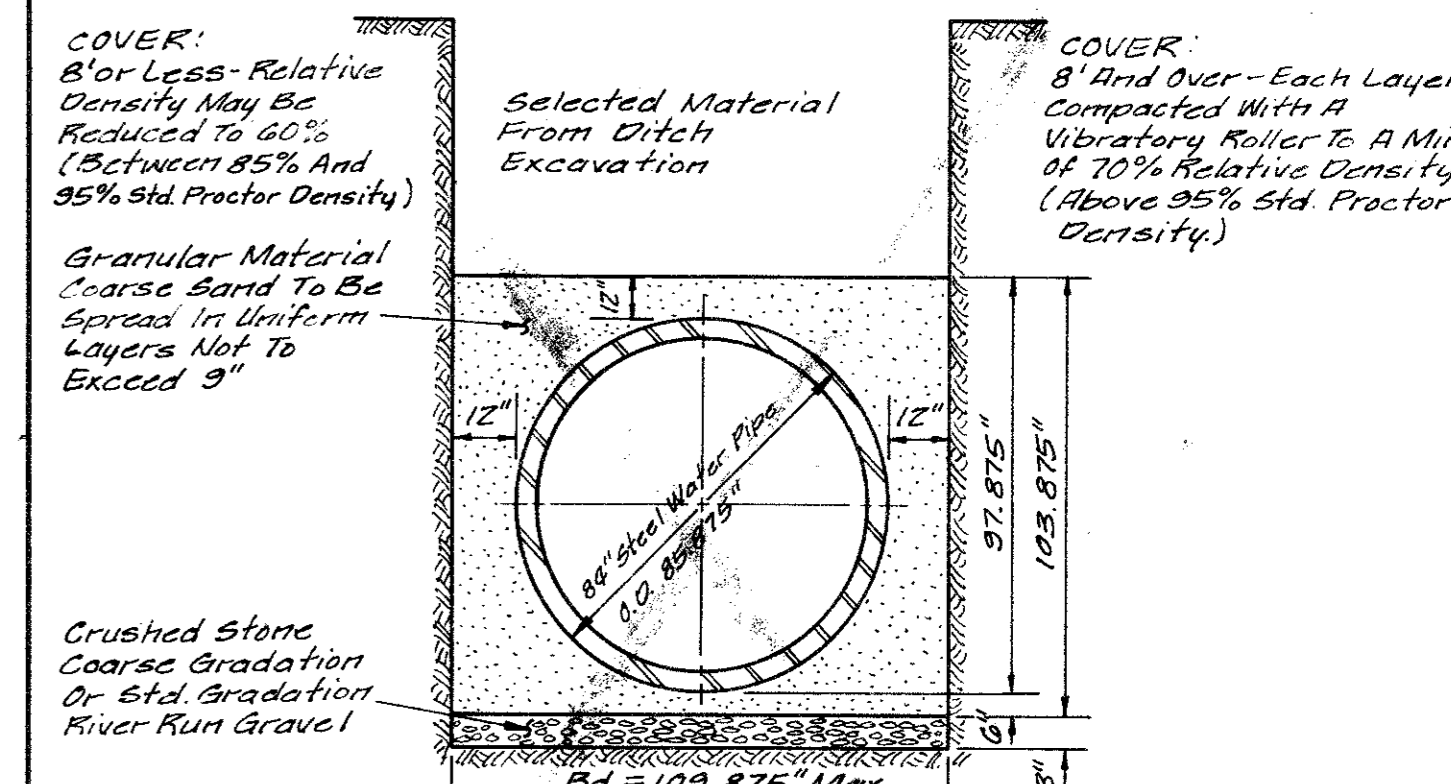
**Thrust Block Detail (Top View)**



**84" Test Fitting w/Internal Test Plug, Reaction Stop Ring & Temp. Nite Cap  
Thrust Block For Sta. 4+12 A=14.25' B=11.75' C=3'**

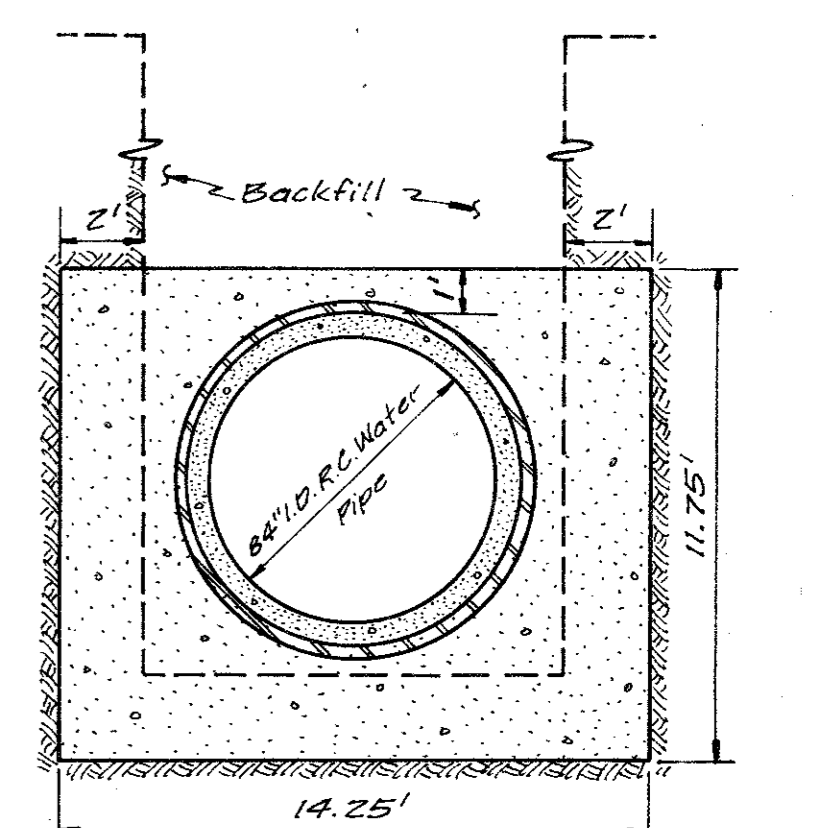


**84" Test Fitting w/Internal Test Plug, Reaction Stop Ring & Temp. Nite Cap  
Thrust Block For Sta. - (1+78) A=14.25' B=11.75' C=3'  
See Access Manhole Details (Top View, End View)**

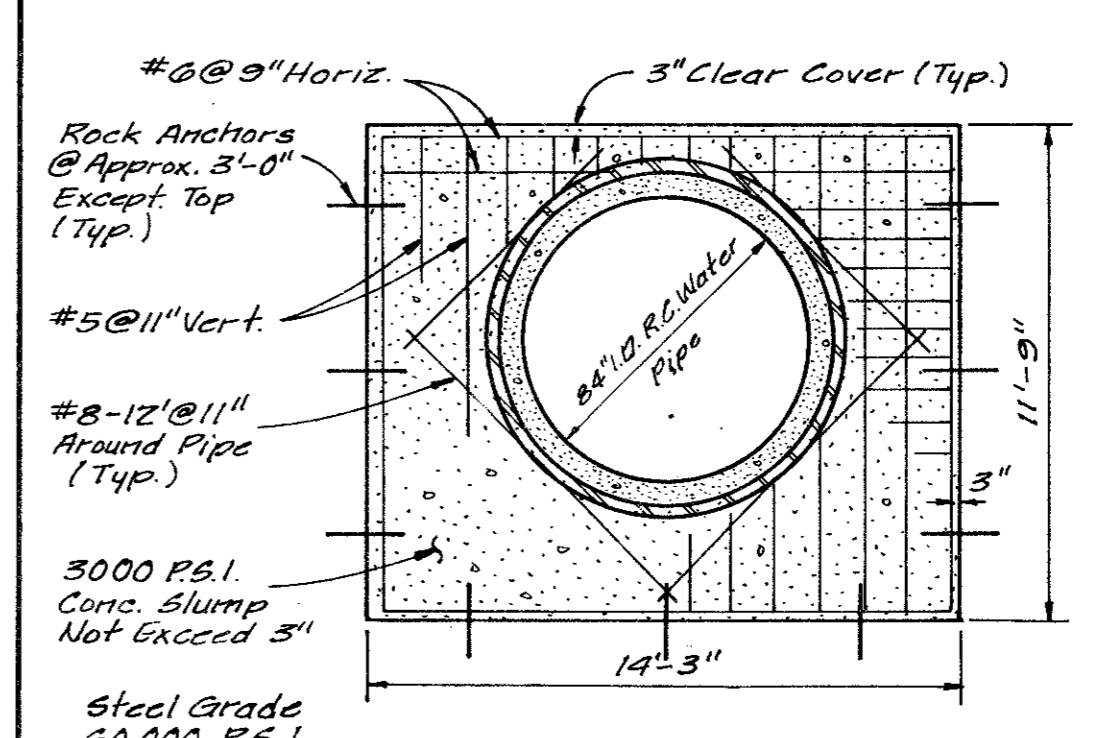


**Special Embedment For 84" Steel Water Pipe**

For 109.875" Ditch Embedment Quantities:  
8.4 C.Y. Of Crushed Stone, Coarse Gradation,  
Or Std. Gradation River Run Gravel Per 100 Ft.  
144.67 C.Y. Granular Material Coarse Sand Per 100 Ft.



**Thrust Block For Test Fittings (End View)**



**Thrust Block Detail (End View)**

**84" R.C. Water Main Detail Sheet**

**Dallas Water Utilities Department  
CITY OF DALLAS, TEXAS**

DESIGN	DRAWN	DATE	SCALE	NOTES	FILE	NO.
S. Rezaei	Inmurguro	April '83	Noted	Noted	685W	600C

4-A

84" DITCH