

WATER AND SANITARY SEWER
GENERAL NOTES

- ALL MATERIALS AND WORKMANSHIP SHALL CONFORM TO THE CITY OF ADDISON STANDARDS AND SPECIFICATIONS.
- ALL WATER MAINS SHALL BE PVC 50R-18 WATER PIPE (BLUE BRUTE WITH WIRE TRACERS), TRACER TO BE #12 INSULATED COPPER.
- ALL WATER MAINS SHALL HAVE MINIMUM COVER BELOW FINISHED GRADES AS FOLLOWS:
6" & 8" - 48" OR AS REQUIRED TO CLEAR OTHER UTILITIES.
- ALL SEWER MAINS SHALL BE PVC 50R-35 SANITARY SEWER PIPE.
- ALL PIPE EMBEDEDMENT SHALL BE AS DETAILED ON THIS SHEET.
- ALL TEES, CONNECTIONS, BENDS, DEAD-ENDS, FIRE HYDRANTS, ETC., SHALL BE SECURELY BLOCKED AGAINST TRENCH WALLS USING 3000 PSI CONCRETE.
- ALL FIRE HYDRANTS SHALL BE MUELLER CENTURION MODEL AND SHALL CONFORM TO THE CITY OF ADDISON STANDARDS AND SPECIFICATIONS.
- ALL TRENCH BACKFILL FOR THESE UTILITIES SHALL BE COMPACTED AS REQUIRED BY CITY, BUT IN NO CASE SHALL THE TOP 12" BE COMPACTED TO LESS THAN 90% STANDARD DENSITY WITH THE REMAINDER OF THE DITCH BEING COMPACTED TO THAT OF ADJOINING SOIL CONDITIONS.
- CONTRACTOR TO VERIFY LOCATION OF ALL UTILITIES PRIOR TO BEGINNING WORK AND SHALL PROTECT EXISTING IMPROVEMENTS DURING CONSTRUCTION.
- THE 8" FIRE LINE METER SHALL BE HERSEY MODEL D.C. DETECTOR CHECK WITH 2" BYPASS TAPPING METER. THE DETECTOR CHECK SHALL BE INSTALLED IN A PRECAST OR CAST-IN-PLACE CONCRETE PIT WITH A CONCRETE FLOOR, WITH THE METER NO LOWER THAN 18" BELOW FINISHED GRADE. THE PIT SHALL BE OF ADEQUATE SIZE TO REMOVE METER WITHOUT HAVING TO DISASSEMBLE METER. THE GOOS TO THE PIT SHALL BE OF THE "BILCO" TYPE, BUT NOT NECESSARILY OF THAT BRAND.
- THE 2" DOMESTIC WATER METER SHALL BE HERSEY 6" FORWARD METER WORK MIT WITH 6" BYPASS. THE METER SHALL BE INSTALLED IN A PRECAST OR CAST-IN-PLACE CONCRETE PIT WITH A CONCRETE FLOOR, WITH THE METER NO LOWER THAN 18" BELOW FINISHED GRADE. THE PIT SHALL BE OF ADEQUATE SIZE TO REMOVE METER WITHOUT HAVING TO DISASSEMBLE METER. THE GOOS TO THE PIT SHALL BE OF THE "BILCO" TYPE, BUT NOT NECESSARILY OF THAT BRAND.
- THE CONTRACTOR SHALL INCLUDE IN HIS BID PRICE ALL COSTS OF UTILITY CONNECTIONS, TAP FEES AND THE TESTING OF NEW WORK REQUIRED BY THE CITY OF ADDISON TO COMPLETE THE WORK WHETHER THESE SERVICES ARE PERFORMED BY THE CONTRACTOR OR BY OTHERS.

STORM DRAINAGE
GENERAL NOTES

1. ALL MATERIALS AND WORKMANSHIP SHALL CONFORM TO THE CITY OF ADDISON STANDARDS AND SPECIFICATIONS.
2. ALL REINFORCED CONCRETE PIPE SHALL BE MINIMUM CLASS III PIPE WITH TONGUE AND GROOVE JOINTS. RAIN NECK SEALER OR APPROVED EQUAL SHALL BE USED IN ALL PIPE JOINTS.
3. STORM DRAINAGE PIPE LESS THAN 15" DIAMETER SHALL BE EXTRA STRENGTH NON-REINFORCED CONCRETE PIPE, VITRIFIED CLAY PIPE OR PVC PIPE AT THE CONTRACTOR'S OPTION WITH THE ENGINEER'S APPROVAL.
4. WHENEVER A SMALLER PIPE IS JOINTED END-TO-END TO A LARGER PIPE, A CONCRETE COLLAR SHALL BE PLACED AROUND THE PIPES OVER THE JOINT.
5. THE CONTRACTOR SHALL VERIFY LOCATION OF ALL UTILITIES PRIOR TO BEGINNING WORK AND SHALL PROTECT EXISTING IMPROVEMENTS DURING CONSTRUCTION.
6. ALL TRENCH BACKFILL FOR STORM SEWER SHALL BE COMPACTED AS REQUIRED BY CITY, BUT IN NO CASE SHALL THE TOP 12" BE COMPACTED TO LESS THAN 90% STANDARD PROCTOR WITH THE REMAINDER BEING COMPACTED TO THAT OF ADJOINING SOIL CONDITIONS.
7. CRUSHED STONE BEDDING OR APPROVED EQUAL WILL BE PROVIDED WHEN ROCK IS ENCOUNTERED IN STORM SEWER TRENCHES.
8. ALL DRAINAGE STRUCTURES SHALL BE 3000 PSI CONCRETE AT 28 DAYS UNLESS OTHERWISE NOTED ON PLANS.

LEGEND

- 16.93 Exst. Spot Elevation
593.00 Prop. Spot Elevation
--- Exst. Contour
--- Prop. Contour

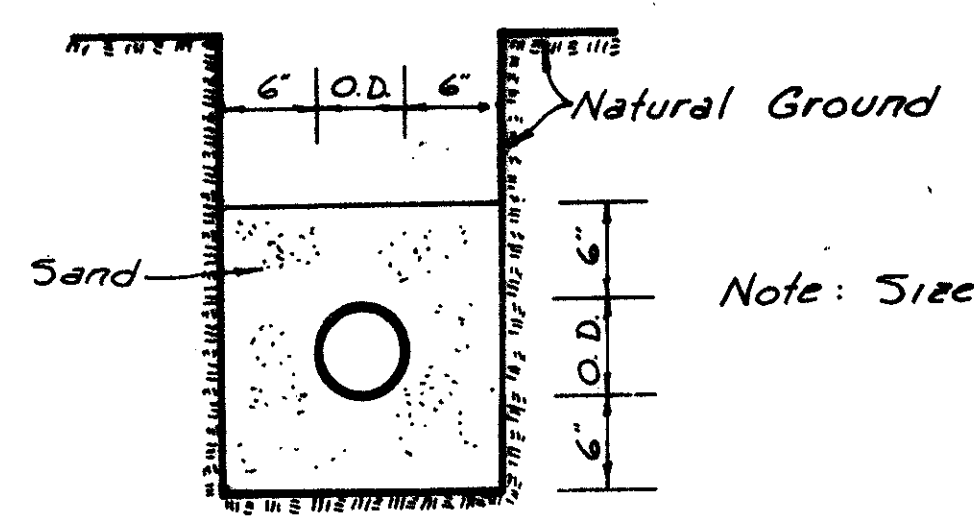
UTILITY INFORMATION IS BASED UPON FIELD MEASUREMENTS AND THE BEST AVAILABLE RECORDS. FIELD DATA IS LIMITED TO THAT WHICH IS VISIBLE AND CAN BE MEASURED. THIS DOES NOT PRECLUDE THE EXISTENCE OF OTHER UNDERGROUND ITEMS. RECORD INFORMATION IS BASED UPON DATA COLLECTED FROM BOTH PUBLIC AND PRIVATE SOURCES. THE COMPLETENESS AND/OR ACCURACY OF THESE RECORDS CANNOT BE GUARANTEED EXCEPT INsofar AS THEY CAN BE VERIFIED BY THE FIELD MEASUREMENT.

BENCHMARK
SQUARE CUT ON TOP OF CURB OF ISLAND NE CORNER OF LIBERTY PLAZA
ELEV. = 622.15

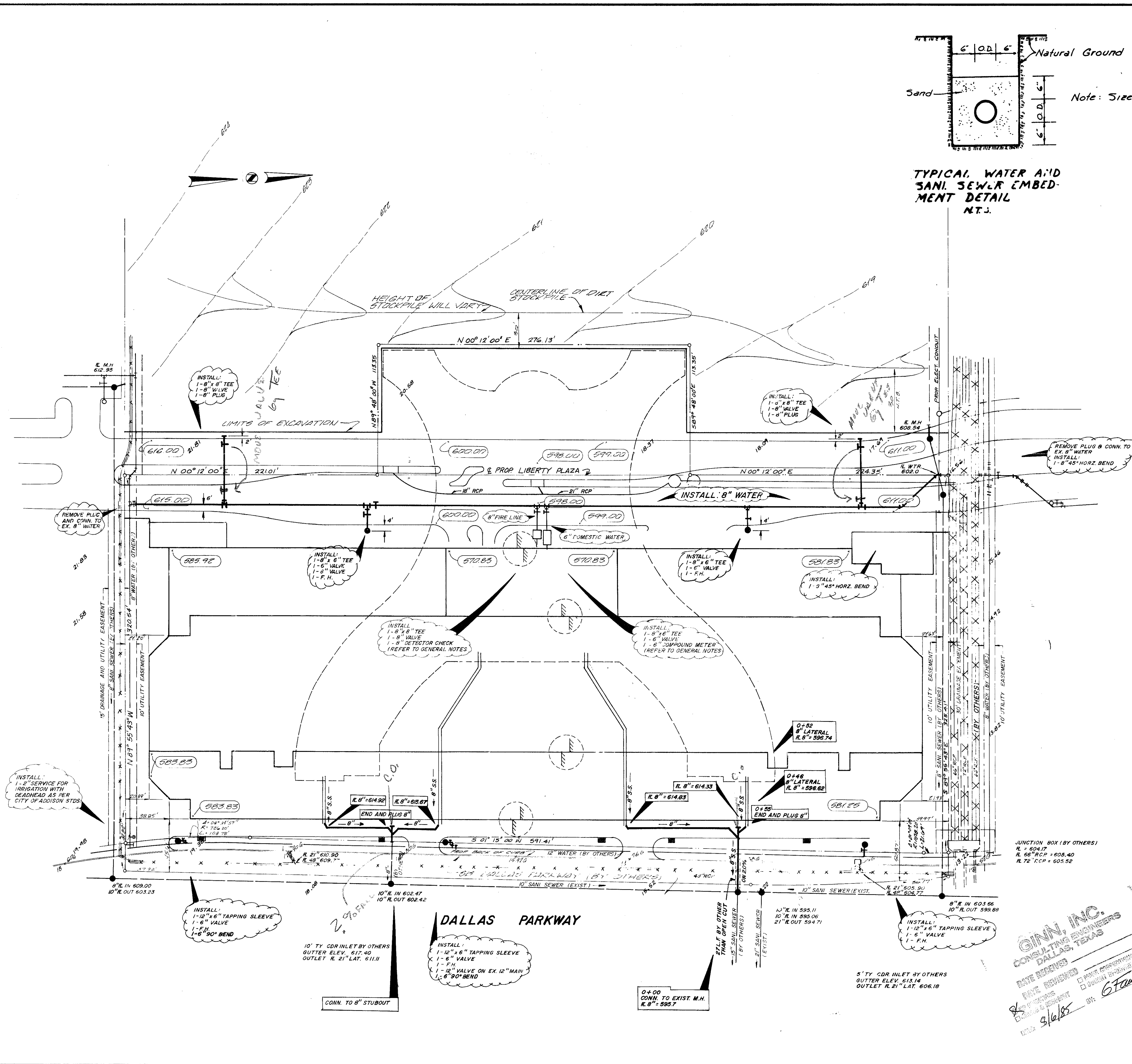
WATER & SANITARY SEWER PLAN
SUNBELT CORPORATE HEADQUARTERS
SUN DEVELOPMENT COMPANY
JACK R. DAVIS & associates, inc.
consulting civil engineers & surveyors
3535 Travis Street, Suite 100
Dallas, Texas 75204 (214) 522-9540

design	drawn	date	scale	notes	job no.	sheet no.
JRD	RT	6/85	1"=40'	JRD	C 84187	of

GINN, INC.
CONSULTING ENGINEERS
DALLAS, TEXAS
DATE RECEIVED
PRICE RECEIVED
BY: [Signature]
9/6/85



TYPICAL WATER AND SANI SEWER EMBEDMENT DETAIL
N.T.S.



BID ISSUE

JACK R. DAVIS & associates, inc.
consulting civil engineers & surveyors
3535 Travis Street, Suite 100
Dallas, Texas 75204 (214) 522-9540