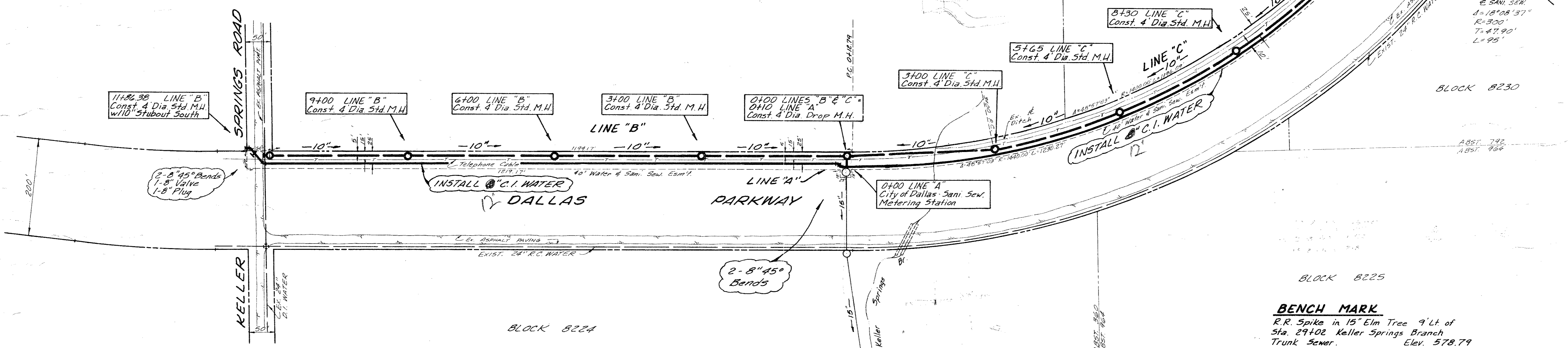
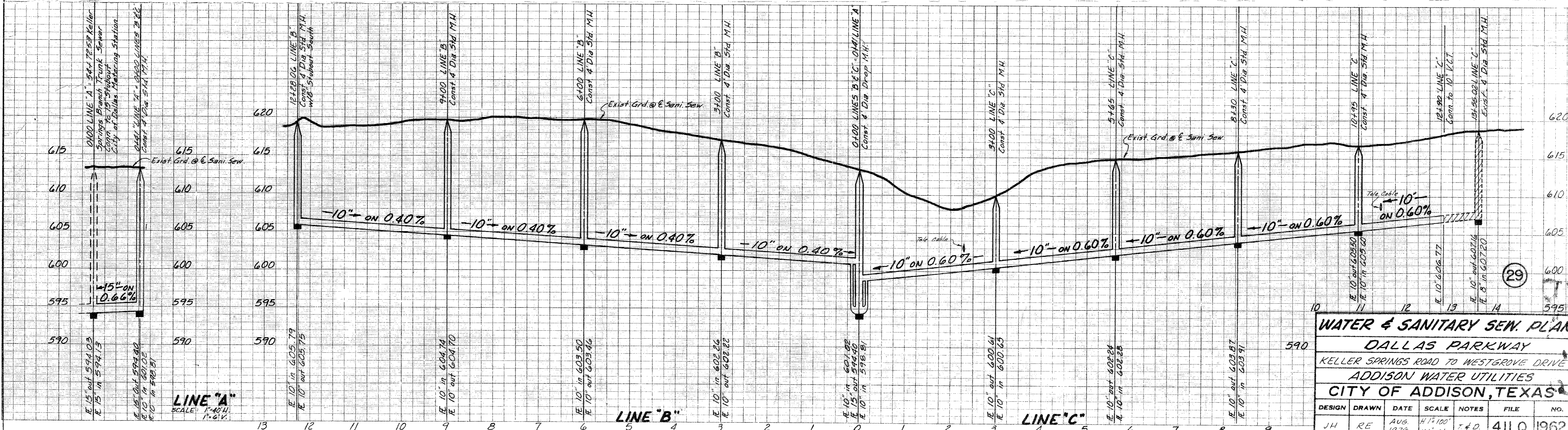


CONNECTION DETAIL



**BENCH MARK**  
 R.R. Spike in 15" Elm Tree 9' Lt. of Sta. 29+02 Keller Springs Branch Trunk Sewer. Elev. 578.79



WATER & SANITARY SEW. PLAN					
DALLAS PARKWAY					
KELLER SPRINGS ROAD TO WESTGROVE DRIVE					
ADDISON WATER UTILITIES					
CITY OF ADDISON, TEXAS					
DESIGN	DRAWN	DATE	SCALE	NOTES	FILE NO.
JH	RE	AUG. 1976	1/2" = 100'	T & D	411 Q 1962