

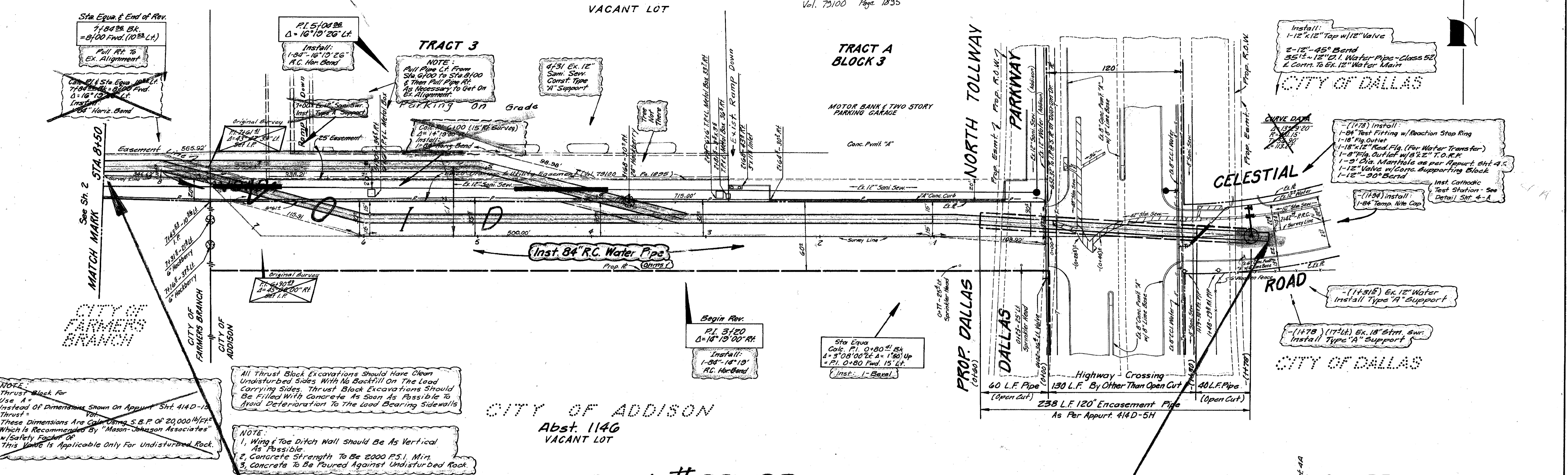
NOTE:
Thrust Block For Use A - Instead Of Dimensions Shown On Appurt. Sht. 414D-15 Thrust - These Dimensions Are Given Using S.B.P. OF 20,000 Lb/Sq Ft. Which Is Recommended By "Mason-Johnson Associates" w/ Safety Factor OF This Value Is Applicable Only For Undisturbed Rock.

Vantage Properties, Inc. March 11, 1983
30' Easement For A 84" Water Main From Sta. 0+00 to Sta. 6+61.7
Abst. 1146 In The City of Addison Temp. Working Space Granted See Conditions Accompanying This Easement.
C.O. : Pg. : Date :

A Letter from John S. Reagan, Santa Fe Land Improvement Co., Will Serve As Temporary Agreement In Lieu Of Formal Easement Document Dated Oct. 20, 1983 Revising The Original Easement Dated April 12, 1983.
Tract B - Block 3

Santa Fe Land Improvement Co. April 12, 1983
Easement For A 84" Water Main From Sta. 7+09.2 to Sta. 13+72.5
Abst. 1146, Blk. 3 of Quorum West In The City of Addison Temp. Working Space Granted See Conditions Accompanying This Easement
C.O. : 830029 Vol. : 83100 Pg. : 2847 Date :
Easement Of Connection - 3/22/84 (Asled)
Vol. 79100 Page 1835

Abst. 1146
CITY OF ADDISON
VACANT LOT



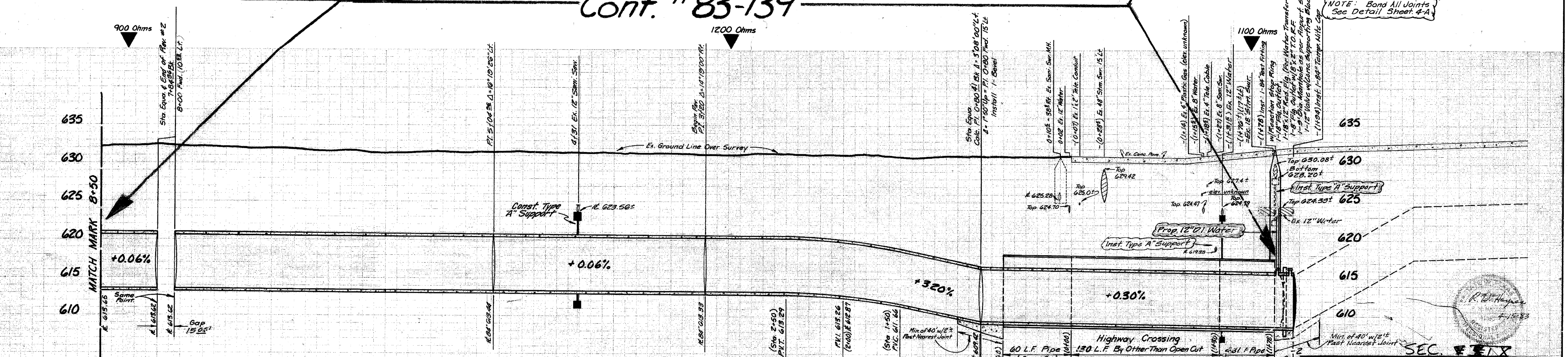
NOTE:
Thrust Block For Use A - Instead Of Dimensions Shown On Appurt. Sht. 414D-15 Thrust - These Dimensions Are Given Using S.B.P. OF 20,000 Lb/Sq Ft. Which Is Recommended By "Mason-Johnson Associates" w/ Safety Factor OF This Value Is Applicable Only For Undisturbed Rock.

All Thrust Block Excavations Should Have Clean Undisturbed Sides With No Backfill On The Load Carrying Sides. Thrust Block Excavations Should Be Filled With Concrete As Soon As Possible To Avoid Deterioration To The Load Bearing Side Walls.

NOTE:
1. Wing & Toe Ditch Wall Should Be As Vertical As Possible.
2. Concrete Strength To Be 2000 P.S.I. Min.
3. Concrete To Be Poured Against Undisturbed Rock.

CITY OF ADDISON
Abst. 1146
VACANT LOT

Cont. #83-139



1030 Lin. Ft. 84" Dia. Prestressed Concrete Embedded Cylinder Pipe - Class 60

Encasement Specification:
Alt. B - 238 of 114" 2-Flg. Circular Liner Plate, 8 Gauge, Galv.; Or 4-Flg. Circular Liner Plate, 8 Gauge Galv.
See General Notes Appurt. Sht. 414D-5H

SEC II

SHEET 1

84" R.C. WATER MAIN					
IN QUORUM AREA FR. DALLAS PARKWAY AT CELESTIAL DR TO BELTWOOD RESERVOIR					
DALLAS WATER UTILITIES DEPARTMENT					
CITY OF DALLAS, TEXAS					
DESIGN	DRAWN	DATE	SCALE	NOTES	FILE NO.
S. Regal	S. Regal M. Burke	Feb. 1983	1"=40' Horiz. 1"=6' Vert.	Smitherman #640-15	685W 660C

B.M. 'D' Cut on Conc. Curb of Parking Lot of Texas Commerce Motor Bank on W. Side of Dallas Hwy. (Celestial Rd.) Produced 30' Easement of Sta. 1000 (West) File 632-60

B26-14
84" DWV

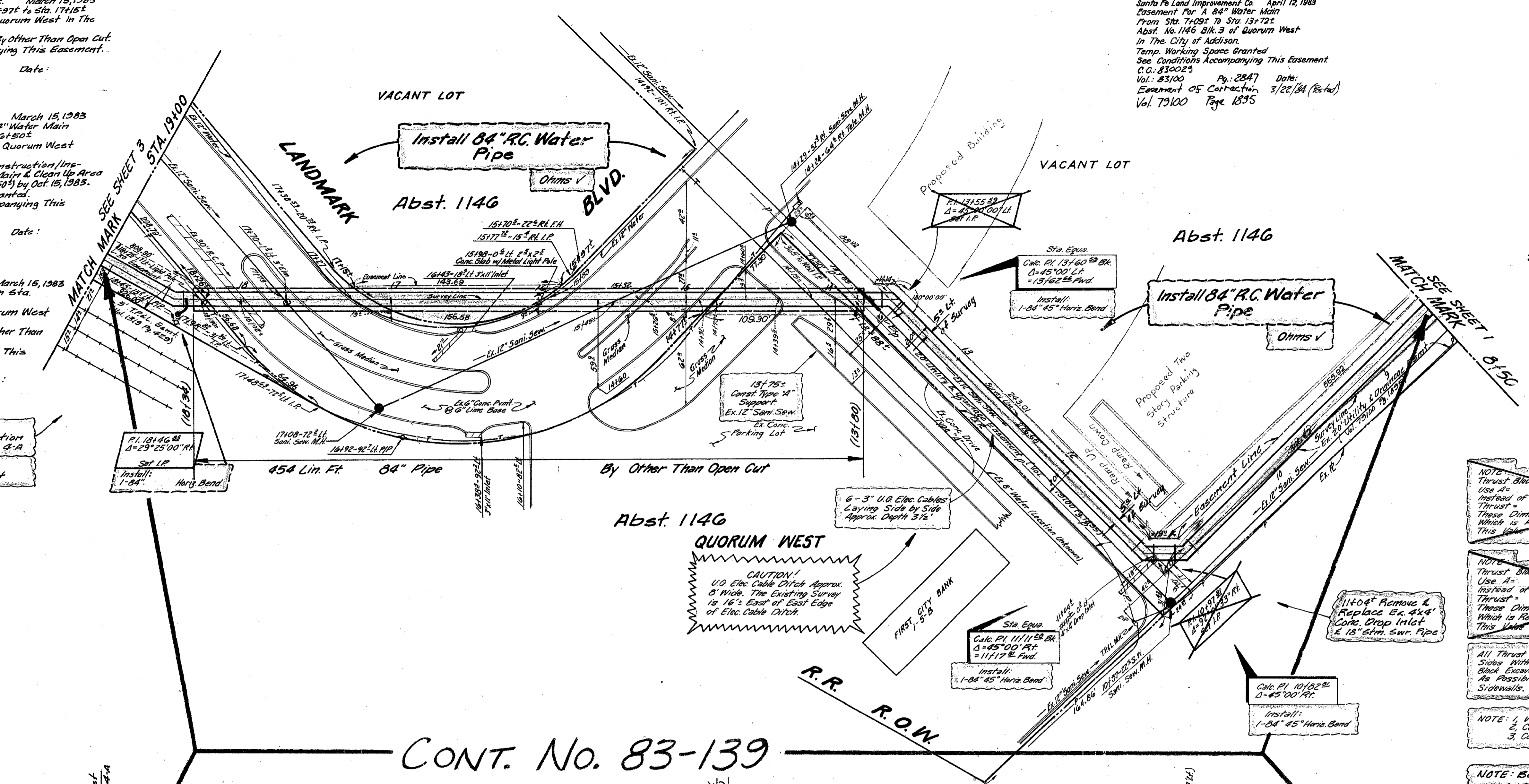
B26-14
84" DWV

Warr-Clay International, Inc. March 15, 1983
A Strip of Land from Sta. 16497 to Sta. 17152
Abst. No. 1146 Blk. 2 of Quorum West in The
City of Addison
Installation of Water Main, By Other Than Open Cut.
See Conditions Accompanying This Easement.
C.O. Vol. Pg. Date:

Landmark Partners, March 15, 1983
A 30' Easement For A 84" Water Main
From Sta. 18126 to Sta. 20150
Abst. No. 1146 Blk. 1 of Quorum West
in The City of Addison.
Contractor To Complete Construction/Installation
of 84" Water Main & Clean Up Area
(From Sta. 18126 to Sta. 20150) by Oct. 15, 1983.
Temp. Working Space Granted.
SEE CONDITIONS Accompanying This
Easement.
C.O. Vol. Pg. Date:

First City Bank Corp. of Texas, Inc. March 15, 1983
A Triangular Tract of Land from Sta.
13188 to Sta. 14177
Abst. No. 1146 Blk. 3 of Quorum West
in The City of Addison.
Installation of Water Main, By Other Than
Open Cut.
See Conditions Accompanying This
Easement.
C.O. Vol. Pg. Date:

Santa Fe Land Improvement Co. April 12, 1983
Easement For A 84" Water Main
From Sta. 71092 To Sta. 131722
Abst. No. 1146 Blk. 3 of Quorum West
in The City of Addison.
Temp. Working Space Granted
See Conditions Accompanying This Easement.
C.O. 830023 Pg. 2847 Date:
Easement of Contractor, 3/22/84 (Revised)
Vol. 79100 Page 1895



CITY OF ADDISON

NOTE: It Will Be The Contractors
Responsibility To Use Sheeting To
Protect The Ex. 12\"/>

NOTE: Brace All Power Poles As Required.
Contractor Shall Contact Mr. D. E. Rich, of
T.F. & L. Co. At (214) 247-0175, Two Days
Prior To Any Excavation of This Project.
At Contractor Expense

NOTE
Thrust Block for 20.42' Band at Sta. 18146.83
Use As
method of Dimensions Shown On Approp. Sht. #140-15
Thrust =
Tons, Vol. =
These Dimensions are to be Used Using S.P. of 20,000 LBS/FT²
Which is Recommended by M.U. w/ Safety Factor of 1.5
This Value is Applicable Only For Undisturbed Rock

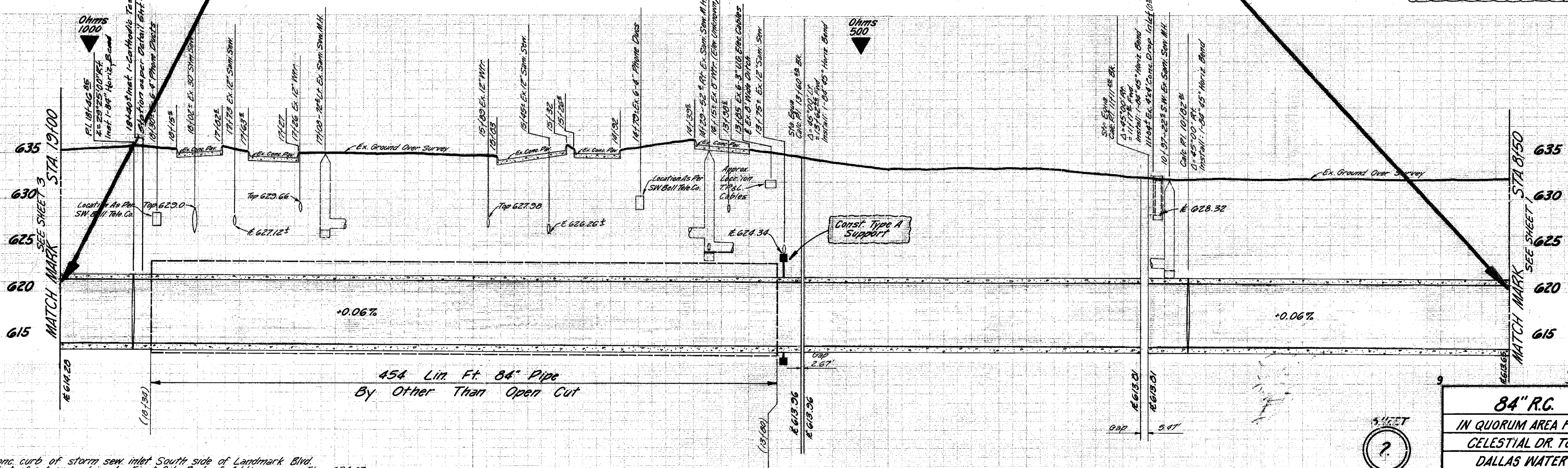
NOTE
Thrust Block for 45' Bands at Sta. 10102.8, 11111.8 & 12100.8
Use As
method of Dimensions Shown On Approp. Sht. #140-15
Thrust =
Tons, Vol. =
These Dimensions are to be Used Using S.P. of 20,000 LBS/FT²
Which is Recommended by M.U. w/ Safety Factor of 1.5
This Value is Applicable Only For Undisturbed Rock

All Thrust Block Excavations Should Have Clean Undisturbed
Slopes With No Backfill on The Load Carrying Sides. Thrust
Block Excavations Should Be Filled With Concrete As Soon
As Possible To Avoid Deterioration To The Load Bearing
Sidewalls.

NOTE: 1. Wing & Top Ditch Walls Should Be As Vertical As Possible.
2. Concrete Strength To Be 2000 P.S.I. Min.
3. Concrete To Be Poured Against Undisturbed Rock.

NOTE: Bond All Joints See Detail Sheet, 4-A

CONT. No. 83-139



T.B.M. - "I" on conc. curb of storm sew. inlet South side of Landmark Blvd.
& 45' West of entrance drive to First City Bank of Addison. Elev. 634.42

1042 Lin. Ft. 84" Dia. Prestressed Concrete Embedded Cylinder Pipe - Class 60

SEC. 9 IX

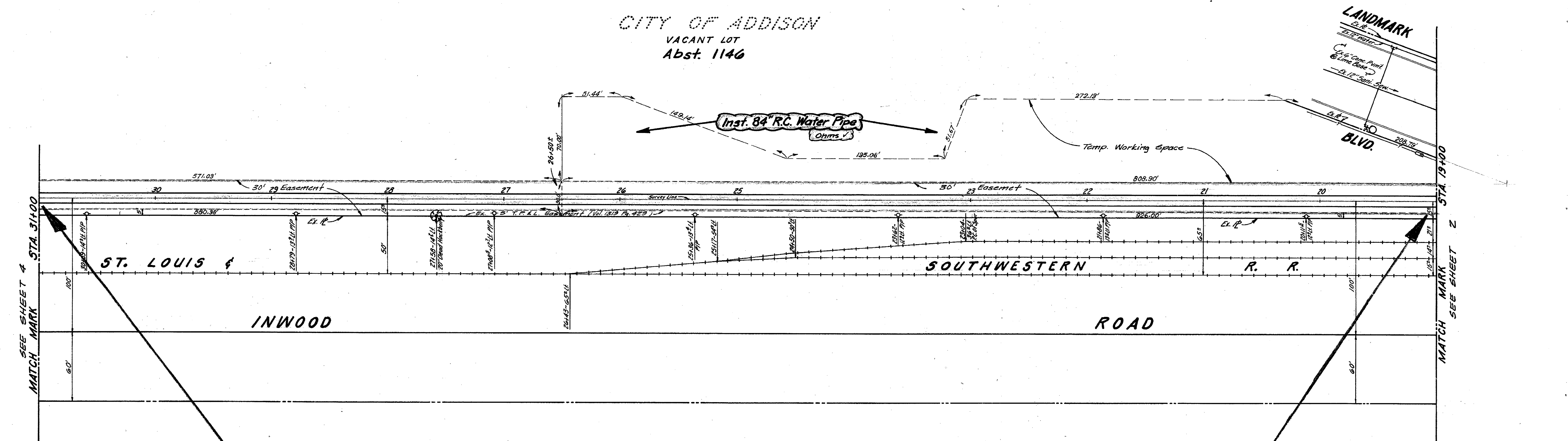
84" R.C. WATER MAIN					
IN QUORUM AREA FR. DALLAS PARKWAY AT					
CELESTIAL DR. TO BELTWOOD RESERVOIR					
DALLAS WATER UTILITIES DEPARTMENT					
CITY OF DALLAS, TEXAS					
DESIGN	DRAWN	DATE	SCALE	NOTES	FILE NO.
S. Regal	M. Ridgway S. Perez	Feb. 1983	1"=40' Hor. 1"=6' Vert.	Smitherman #440-15	685W 660C

Landmark Partners, March 15, 1983
 30' Easement for a 84" Water Main
 From Sta. 18+26.5 to Sta. 20+120.5
 Abst. No. 1146 Blk. 1 of Quorum West
 In The City of Addison
 Contractor to Complete Construction/
 Installation of 84" Water Main & Clean Up Area
 (From Sta. 18+26.5 to Sta. 20+120.5) By Oct. 15, 1983
 Temp. Working Space Granted.
 SEE CONDITIONS Accompanying This
 Easement.
 C.D.:
 Vol.: Pg.: Date:

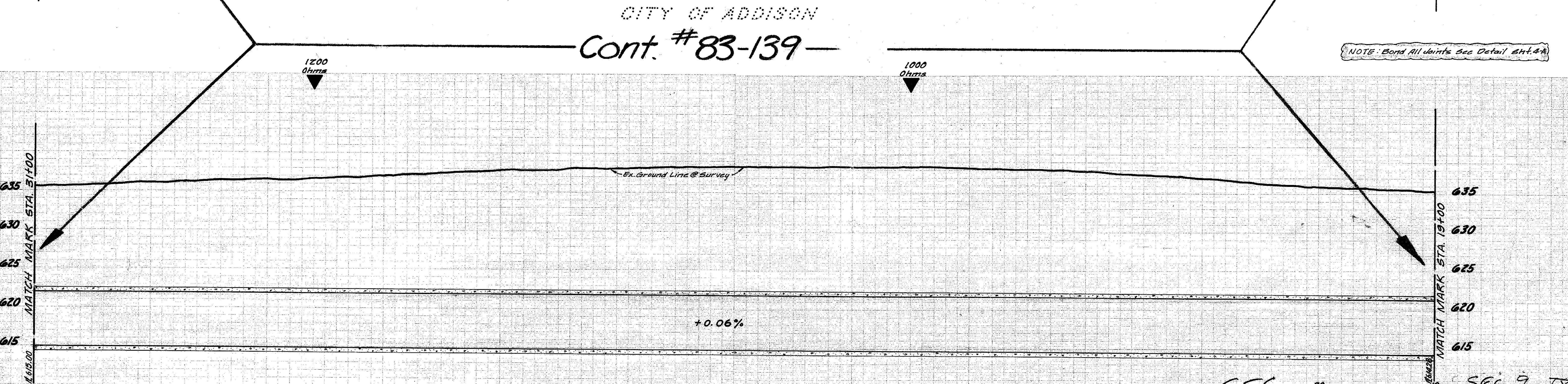
McNeff-Palmer Properties Inc. March 15, 1983
 30' Easement for a 84" Water Main
 From Sta. 20+120.5 to Sta. 32+120.5
 Abst. No. 1146 Blk. 1 of Quorum West
 In The City of Addison
 Contractor to Complete Construction/
 Installation of 84" Water Main & Clean Up Area
 (From Sta. 20+120.5 to Sta. 32+120.5) By Nov. 20, 1983
 Temp. Working Space Granted.
 SEE CONDITIONS Accompanying
 This Easement.
 C.D.: 83142D
 Vol.: 83217 Pg.: 1673 Date: 4-27-83

NOTE: Brace All Power Poles As Required.
 Contractor Shall Contact Mr. D.E. Rich of
 T.P. & L. Co. At (214) 387-0175, Two Days
 Prior To Any Excavation Of This Project.
 At Contractors Expense.

CITY OF ADDISON
 VACANT LOT
 Abst. 1146



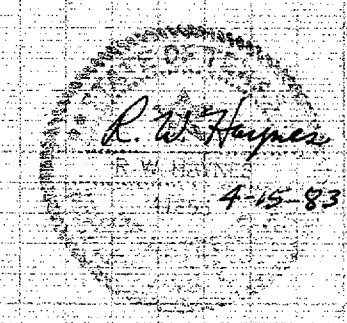
CITY OF ADDISON
 Cont. # 83-139



1200 Lin. Ft. 84" Dia. Prestressed Concrete Embedded Cylinder Pipe - Class 60

84" R.C. WATER MAIN					
IN QUORUM AREA FR. DALLAS PARKWAY AT CELESTIAL DR. TO BELTWOOD RESERVOIR					
DALLAS WATER UTILITIES DEPARTMENT					
CITY OF DALLAS, TEXAS					
DESIGN	DRAWN	DATE	SCALE	NOTES	FILE NO.
S. Regal	S. Perez	Feb. 1983	1"=40' Hor. 1"=6' Vert.	Smithman #640-15	685W 660C

T.B.M. "Cut on conc. curb center radius S.W. Cor. of Belt Line Rd. & Inwood Rd. west of St. Louis & Southwestern Railroad Elev. 632.11 (Set 11-8-82)
 B.M. "Cut in S.E. Cor. of Pump Pits Structure bet. Pump House & the Beltwood Pump Station Elev. 630.02



SEC 9 IX
 SHEET 3
 W.A. # TWAZIZ

McNeff-Palmer Properties Inc. March 15, 1983
 30' Easement For A 84" Water Main
 From Sta. 26+150 to Sta. 32+26"
 Abst. No. 1146, Blk. 1 of Quorum West
 In The City of Addison.
 Contractor To Complete Construction/
 Installation of 84" Water Main & Clean Up
 Area (From Sta. 26+150 to Sta. 32+26") by Nov. 20, 1983
 Temp. Working Space Granted.
 SEE CONDITIONS Accompanying This
 Easement.
 C.O. 831420
 Vol. 83217 Pg. 1673 Date: 4-27-83

McNeff-Palmer Properties Inc. March 15, 1983
 30' Easement For A 84" Water Main
 From Sta. 32+26" to Sta. 34+58"
 Abst. No. 1146, Blk. 1 of Quorum West
 In The City of Addison.
 Contractor To Complete Construction/
 Installation of 84" Water Main & Clean Up Area
 (From Sta. 32+26" to Sta. 34+58") by Nov. 25, 1983
 Temp. Working Space Granted
 SEE CONDITIONS Accompanying This
 Easement.
 C.O. 831420
 Vol. 83217 Pg. 1673 Date: 4-27-83

Railroad License Agreement April 23, 1985
 Obtained from St. Louis Southwestern Railway
 Co. for an 84" R.C. Water Main crossing from
 Sta. 34+58" to Sta. 38+99"
 Contractor shall Contact Mr. H.D. Caldwell at (214)
 280-1590, five (5) days written notice prior to
 construction of Water Main.
 C.O. 83-0029

Calc. Sta. 41+30 Install
 1-84" Temp Nite Cap

on Revision "B"
 26+00
 = End of Survey

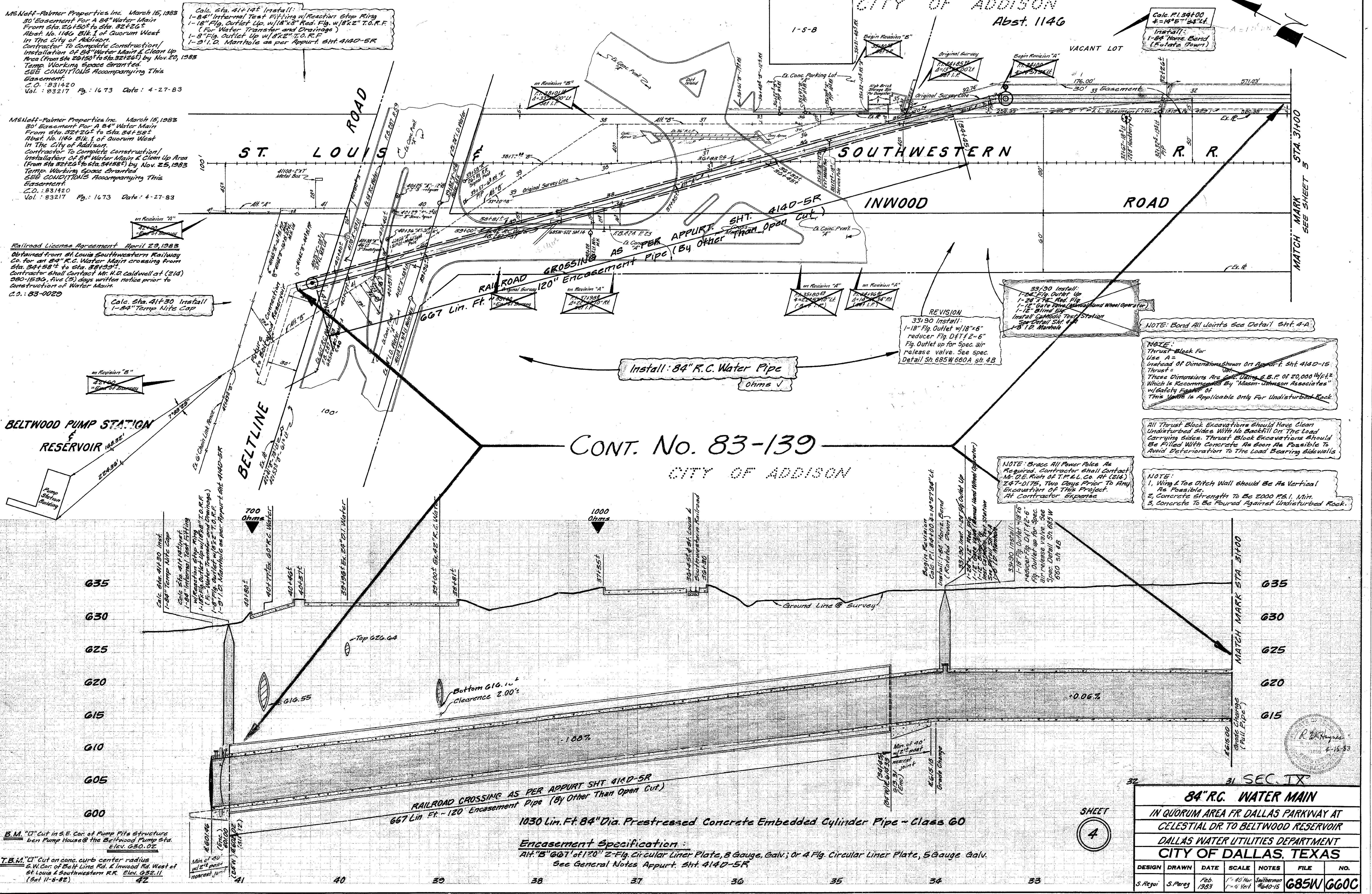
BELTWOOD PUMP STATION
 RESERVOIR

BELTLINE

CONT. No. 83-139
 CITY OF ADDISON

CITY OF ADDISON
 Abst. 1146

Calc. P.I. 34+00
 * = 14° 5' 33" Lt.
 Install:
 1-84" Valve Band
 (Rotate Down)



Install: 84" R.C. Water Pipe
 Ohms V

REVISION
 33+90 Install:
 1-18" Flg. Outlet w/18" x 6"
 reducer Flg. DFT 2-6"
 Flg. Outlet up for Spec. Air
 release valve. See spec.
 Detail Sh. 685W 680A sh. 4B

33+90 Install:
 1-24" Flg. Outlet Up
 1-24" Flg. Red. Flg.
 1-12" Gate Valve (Manual Hand Wheel Operator)
 1-12" Blind Flg.
 Install Gate Valve Test Station
 See Detail Sh. 685W
 1-3" I.D. Manhole

NOTE: Bond All Joints See Detail Sh. 4-A
 NOTE: Thrust Block For
 Use A =
 Instead of Dimensions shown on Appurt. Sh. 4140-15
 Thrust =
 These Dimensions Are For Using S.P. of 20,000 lbs./ft.²
 Which is Recommended By "Mason-Johnson Associates"
 with Safety Factor of
 This Value is Applicable Only For Undisturbed Rock

All Thrust Block Excavations Should Have Clean
 Undisturbed Sides With No Backfill On The Load
 Carrying Sides. Thrust Block Excavations Should
 Be Filled With Concrete As Soon As Possible To
 Avoid Deterioration To The Load Bearing Sidewalls

NOTE:
 1. Wing & Toe Ditch Wall Should Be As Vertical
 As Possible.
 2. Concrete Strength To Be 2000 P.S.I. Min.
 3. Concrete To Be Poured Against Undisturbed Rock.

NOTE: Brace All Power Poles As
 Required. Contractor shall Contact
 Mr. J.E. Rich of T.P.E.L. Co. AP (214)
 247-0175, Two Days Prior To Any
 Excavation of This Project.
 At Contractor Expense

RAILROAD CROSSING AS PER APPURT. SHT. 4140-5R
 667 Lin. Ft. - 120" Encasement Pipe (By Other Than Open Cut)
 1030 Lin. Ft. 84" Dia. Prestressed Concrete Embedded Cylinder Pipe - Class 60

Encasement Specification:
 RH "B" 667' of 120" 2-Flg. Circular Liner Plate, 8 Gauge, Galv.; or 4 Flg. Circular Liner Plate, 5 Gauge Galv.
 See General Notes Appurt. Sh. 4140-5R

B.M. "D" Cut in S.E. Cor. of Pump Pile Structure
 ben Pump House @ the Beltwood Pump Sta.
 Elev. 630.02
 T.B.M. "E" Cut on conc. curb center radius
 S.W. Cor. of Ex. 4 Line Rd. & Inwood Rd. West of
 St. Louis & Southwestern R.R. Elev. 632.11
 (Set 11-8-82)

SHEET
 4

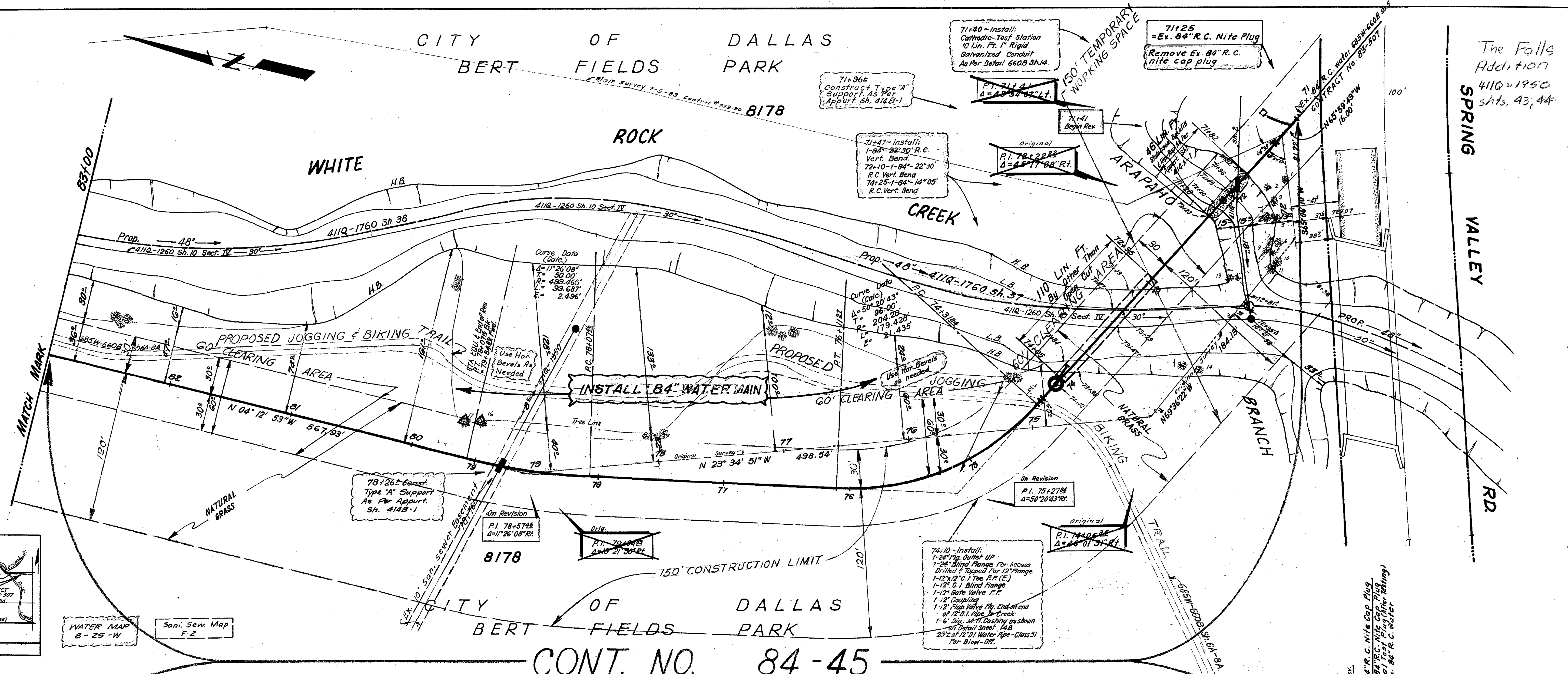
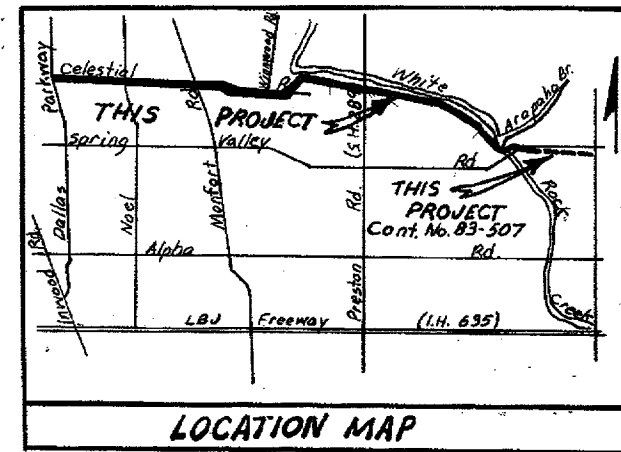
84" R.C. WATER MAIN					
IN QUORUM AREA FR. DALLAS PARKWAY AT CELESTIAL DR. TO BELTWOOD RESERVOIR					
DALLAS WATER UTILITIES DEPARTMENT					
CITY OF DALLAS, TEXAS					
DESIGN	DRAWN	DATE	SCALE	NOTES	NO.
S. Regui	S. Pereg	Feb. 1983	1" = 6' Vert.	Southwestern #640-15	685W 660C

#7WAZ12

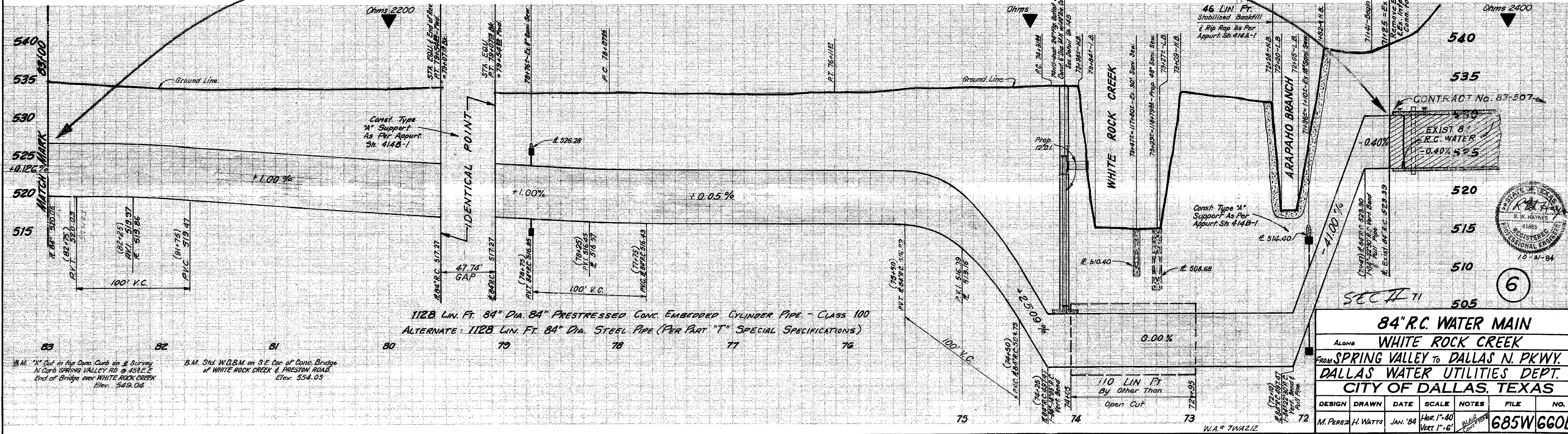
No.	Sta.	Lt.	Rt.	Size	Description
1	71+75	2'	12"	Elm	
2	71+81	17'	4"	Twin Ash	
3	71+93	14'	4"	Ash	
4	72+04	19'	10"	Elm	
5	72+05	12'	4"	Ash	
6	72+34	7'	6"	Elm	
7	72+39	13'	6"	Ash	
8	72+43	5'	6"	Ash	
9	72+45	11'	6"	Ash	
10	72+45	1'	6"	Elm	
11	72+53	1'	6"	Elm	
12	72+76	15'	6"	Locust	
13	72+80	20'	8"	Elm	
14	73+53	7'	6"	Elm	
15	73+53	6'	12"	Elm	
16	74+50	30'	20"	Pecan	
17	74+64	27'	18"	Pecan	

For Additional Information See D.W.U. Tree Specs.

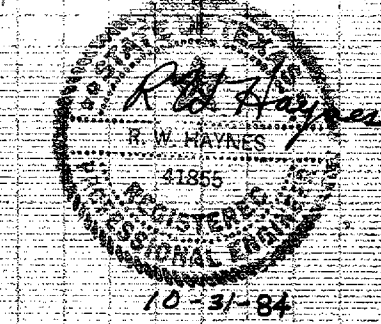
For Park Dept. Easement: Council Resolution # 842083 June 20, 1984 From Station 71+25 (Sheet 6) To Station 100+46.83 (Sheet 8)



CONT. NO. 84-45



84" R.C. WATER MAIN					
Along WHITE ROCK CREEK					
From SPRING VALLEY TO DALLAS N. PKWY.					
DALLAS WATER UTILITIES DEPT.					
CITY OF DALLAS, TEXAS					
DESIGN	DRAWN	DATE	SCALE	NOTES	FILE NO.
M. PEREZ	H. WATTS	JAN. '84	HOR. 1"=40'	VERT. 1"=6'	685W660B



SECTION 6

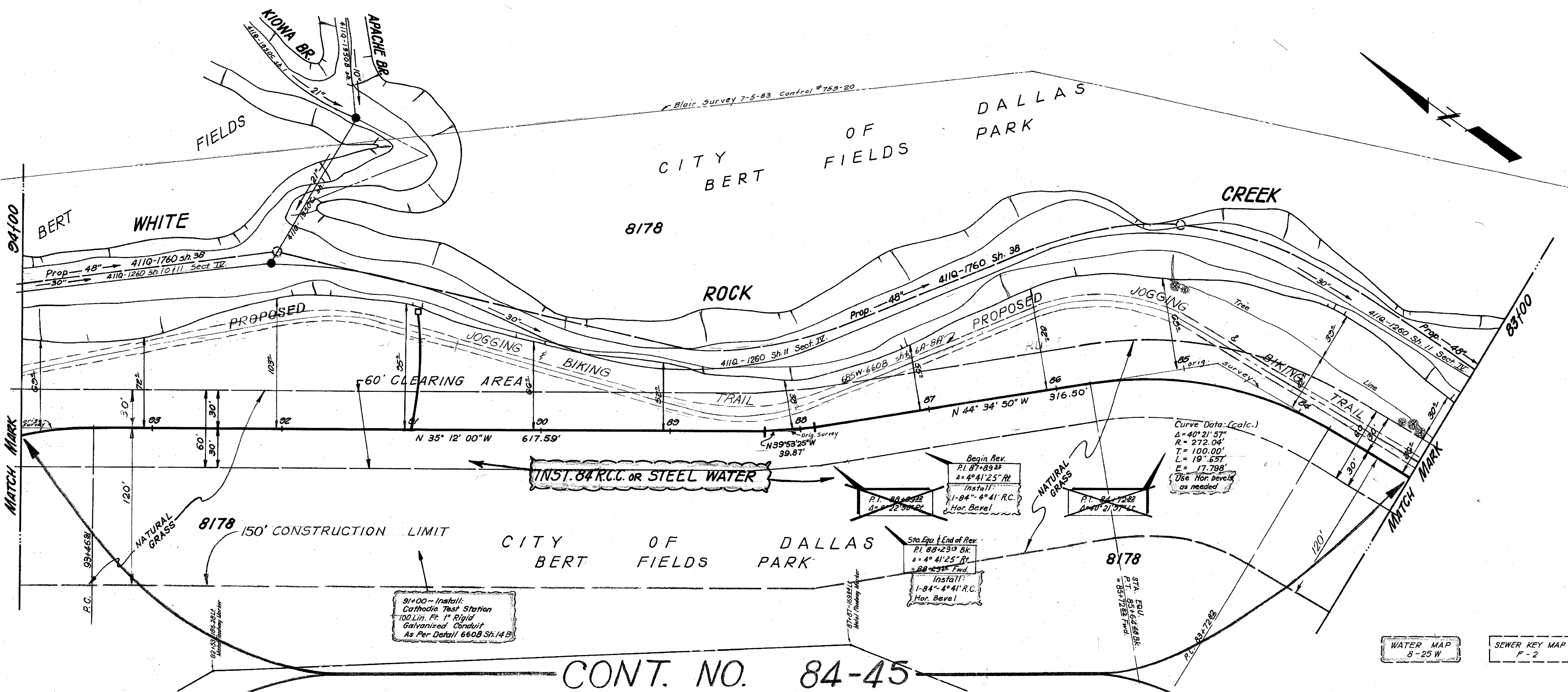
SEC. VIII

Note: Contractor shall restore ground to the original elevation and condition under trees where embankment and spoil have been stockpiled. Extreme care shall be taken to avoid damage to trees. See Detail Sheet 685W-660B Sh. 14B

Upon completion of work, the construction area shall be prepared and seeded in accordance with the Special Specifications and the Plan-Profile Sheets. See Detail Sheet 685W-660B Sh. 14B

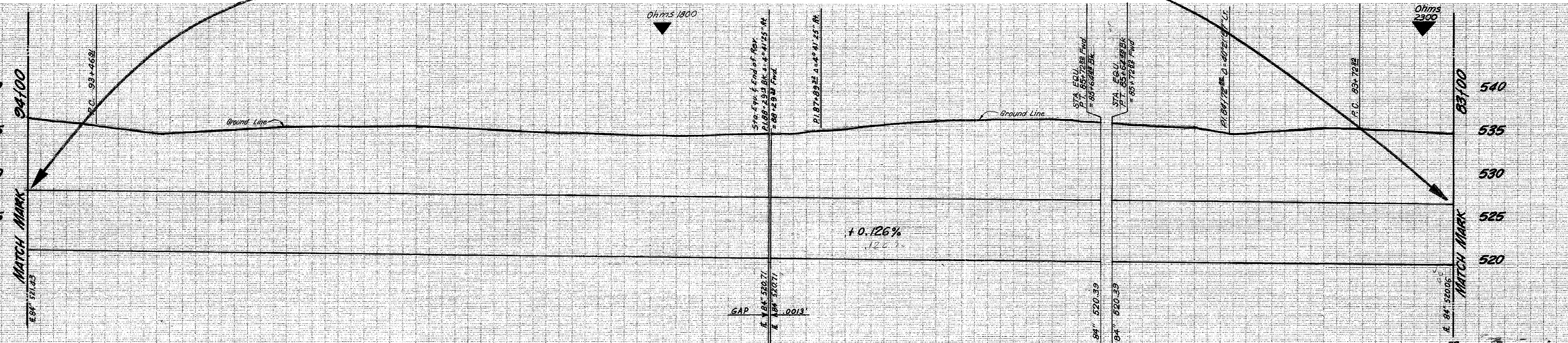
It is the intent of Dallas Water Utilities to minimize damage to trees in Park area and private properties. The Contractor shall take extreme care when working near trees designated to be saved. Excavation and fill shall be kept to a minimum. Upon notification from the Construction Engineer, Contractor shall remove all materials and restore the area to its original condition. See Detail Sheet 685W-660B Sh. 14B

Install 1 x 1 No. 2 Yellow Pine posts 3'-4" above ground at a minimum of 15' on center along both sides of the construction area with red-orange fluorescent flagging (1" minimum width) as directed by the construction engineer. See Detail Sheet 685W-660B Sh. 14B



WATER MAP 8-25 W
SEWER KEY MAP F-2

CONT. NO. 84-45

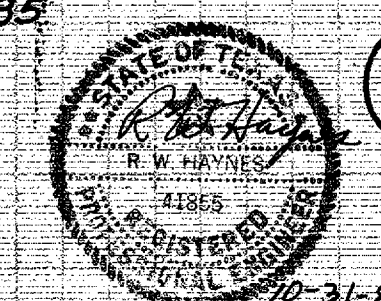


1092 LIN. FT. 84" DIA. PRESTRESSED CONC. EMBEDDED CYLINDER PIPE - CLASS 100
ALTERNATE: 1092 LIN. FT. 84" DIA. STEEL PIPE (PER PART "T" SPECIAL SPECIFICATIONS)

B.M. 541.62 on top of Conc. Curb at E. Survey of City Spring Valley Rd. @ 453 E. E. End of Bridge over White Rock Creek. Elev. 549.04

B.M. 534.05 on S.E. Cor. of Conc. Bridge at White Rock Creek & Preston Road. Elev. 534.05

T.B.M. Top I.R. @ Sta. 115+54.36 of Original Survey. Elev. 541.62



7

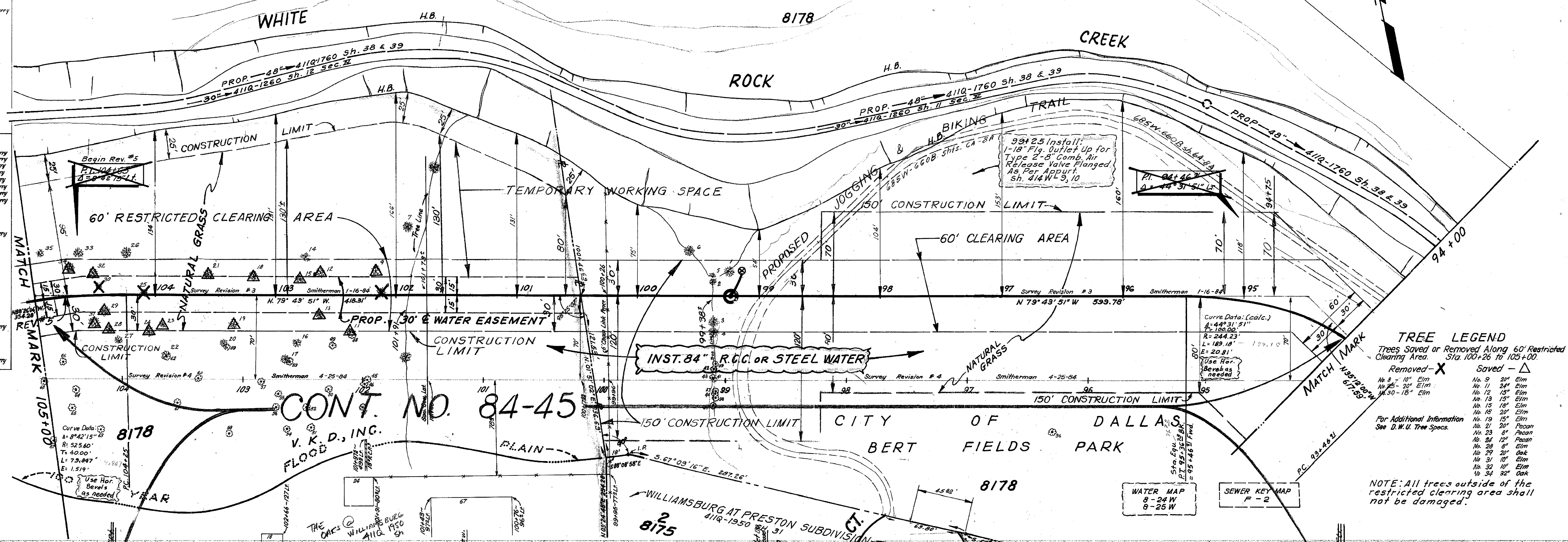
84" R. C. WATER MAIN					
IN CELESTIAL ROAD					
FROM SPRING VALLEY TO DALLAS N. PKWY.					
DALLAS WATER UTILITIES DEPT.					
CITY OF DALLAS, TEXAS					
DESIGN	DRAWN	DATE	SCALE	NOTES	FILE NO.
M. Perez	M. Ridway K. Reeves	Feb. 1984	Hor. 1"=40' Vert. 1"=6'	SUPPLEMENTAL SPECIFICATIONS	685W 660B

Sta.	Lt.	Rt.	Size	Description
1	99+25	201	6"	Hackberry
2	99+37	119	8"	Hackberry
3	99+37	291	8"	Hackberry
4	99+37	291	8"	Hackberry
5	99+37	291	8"	Hackberry
6	99+35	988	12"	Hackberry
7	101+31	580	20"	Oak
8	102+11	21	20"	Elm
9	102+16	20	20"	Elm
10	102+38	31	24"	Elm
11	102+38	31	24"	Elm
12	102+63	177	15"	Elm
13	102+64	161	15"	Elm
14	102+84	314	18"	Elm
15	102+79	151	18"	Elm
16	102+20	401	10"	Hackberry
17	102+31	538	10"	Elm
18	103+18	161	20"	Elm
19	103+36	241	15"	Elm
20	103+41	401	10"	Elm
21	103+56	171	20"	Pecan
22	103+57	291	8"	Oak
23	103+55	251	8"	Pecan
24	104+04	301	12"	Pecan
25	104+09	1	20"	Elm
26	104+23	341	8"	Elm
27	104+30	381	20"	Elm
28	104+38	281	20"	Elm
29	104+45	131	18"	Elm
30	104+45	131	18"	Elm
31	104+50	241	10"	Elm
32	104+51	171	10"	Elm
33	104+63	331	32"	Oak
34	104+72	219	32"	Oak
35	104+72	219	32"	Oak
36	104+72	219	32"	Oak

V.K.D., Inc. August 28, 1984
 30' Easement For A 36" Water Main
 From Sta. 100+46.59 To Sta. 104+36.12
 Block 8178.
 Temporary Working Space Granted
 O.O. Vol. Pg. Date:

Blair Survey 7-5-83 Control # 753-20

CITY OF DALLAS
 BERT FIELDS PARK



TREE LEGEND

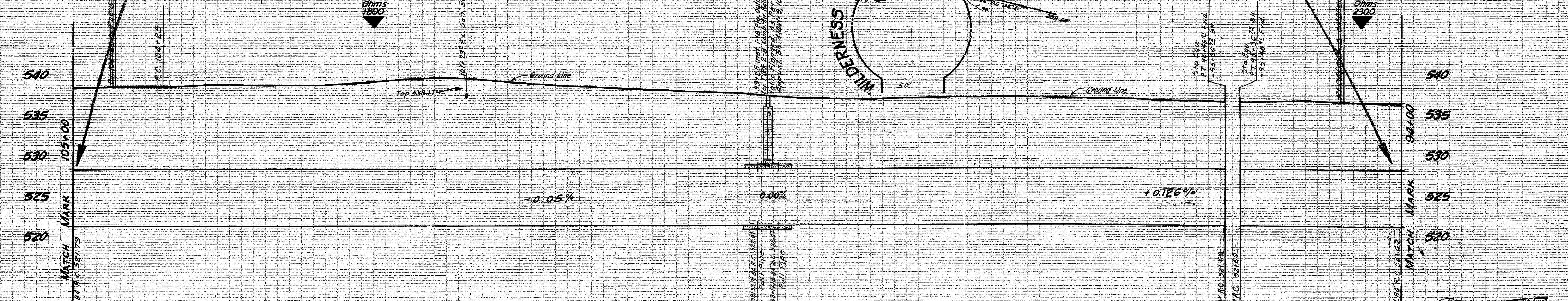
Trees Saved or Removed Along 60' Restricted Clearing Area. Sta. 100+26 to 105+00.

Removed - X	Saved - Δ
No. 8 - 10' Elm	No. 9 - 20' Elm
No. 11 - 24' Elm	No. 11 - 24' Elm
No. 12 - 15' Elm	No. 12 - 15' Elm
No. 13 - 15' Elm	No. 13 - 15' Elm
No. 15 - 18' Elm	No. 15 - 18' Elm
No. 16 - 20' Elm	No. 16 - 20' Elm
No. 19 - 15' Elm	No. 19 - 15' Elm
No. 21 - 20' Pecan	No. 21 - 20' Pecan
No. 23 - 8' Pecan	No. 23 - 8' Pecan
No. 24 - 12' Pecan	No. 24 - 12' Pecan
No. 28 - 8' Elm	No. 28 - 8' Elm
No. 29 - 20' Oak	No. 29 - 20' Oak
No. 31 - 10' Elm	No. 31 - 10' Elm
No. 32 - 10' Elm	No. 32 - 10' Elm
No. 34 - 32' Oak	No. 34 - 32' Oak

For Additional Information See D.W.U. Tree Specs.

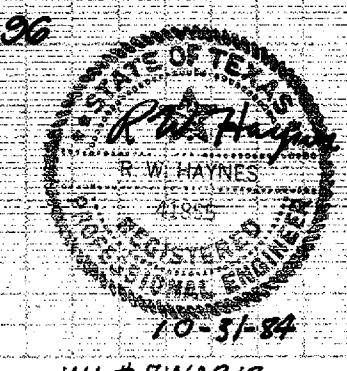
NOTE: All trees outside of the restricted clearing area shall not be damaged.

CONT. NO. 84-45
 V.K.D., INC.
 FLOOD PREVENTION



1090 LIN. FT. 84" DIA. PRESTRESSED CONC. EMBEDDED CYLINDER PIPE - CLASS 100
 ALTERNATE: 1090 LIN. FT. 84" DIA. STEEL PIPE (AS PER PART "T" SPECIAL SPECIFICATIONS)

84" R.C. WATER MAIN					
ALONG WHITE ROCK CREEK					
FROM SPRING VALLEY TO DALLAS N. PKWY.					
DALLAS WATER UTILITIES DEPT.					
CITY OF DALLAS, TEXAS					
DESIGN	DRAWN	DATE	SCALE	NOTES	FILE NO.
M. PAREZ	H. WATTS	JAN. '84	HOR. 1"=40'	VERT. 1"=6'	685W660B



B.M. "X" Cut in Top Conc. Curb on S. Survey
 N. Cor. Spring Valley Rd. at 551.62 E.
 End of Bridge over White Rock Creek
 Elev. 549.04

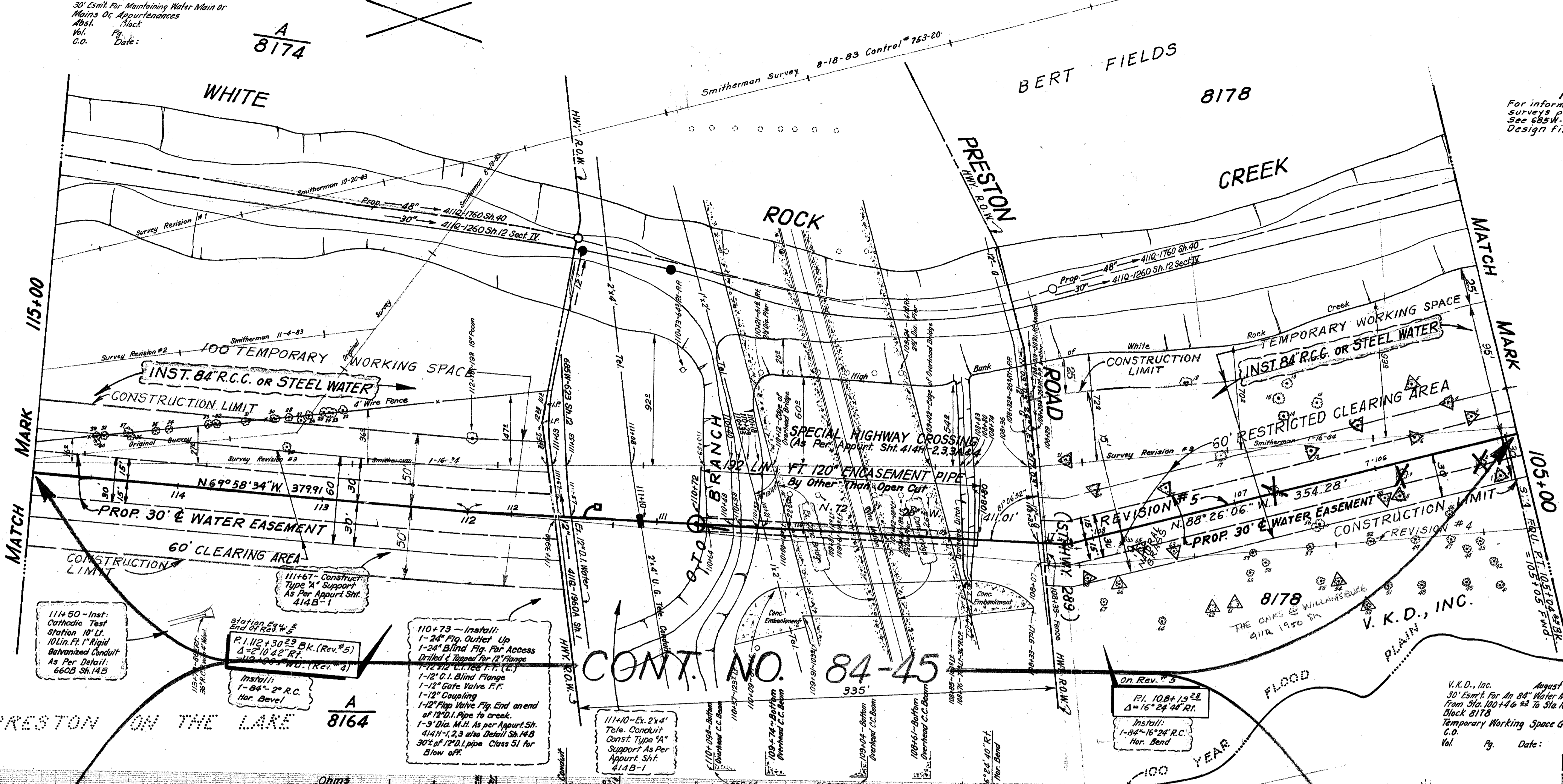
B.M. Spd. V.K.D.B.M. on S.E. Cor. of Corner Bridge
 of White Rock Creek & Preston Road
 Elev. 554.05

T.B.M. Top I.R. of Sta. 115+94.85
 of Original Survey
 Elev. 541.62

TREE LIST

Station	LT	RT	Size	Description
1	105+15	328	24"	Oak
2	105+27	221	24"	Oak
3	105+31	39	20"	Oak
4	105+45	308	12"	Elm
5	105+70	348	24"	Ash
6	105+71	19	24"	Ash
7	105+82	268	10"	Elm
8	105+86	408	12"	Elm
9	106+10	93	24"	Ash
10	106+36	274	8"	Elm
11	106+41	335	36"	Oak
12	106+49	308	36"	Ash
13	106+55	415	12"	Elm
14	106+60	194	15"	Elm
15	106+68	304	15"	Elm
16	106+70	304	15"	Elm
17	107+05	33	24"	Ash
18	107+34	478	36"	Hackberry
19	107+48	221	36"	Elm
20	107+58	405	36"	Pecan
21	108+11	38	24"	Pecan

A.S.C. Versailles-Dallas Inc.
30' Easmt. For Maintaining Water Main or
Mains Or Appurtenances
Inst. No. 8174
Vol. Pg. Date:

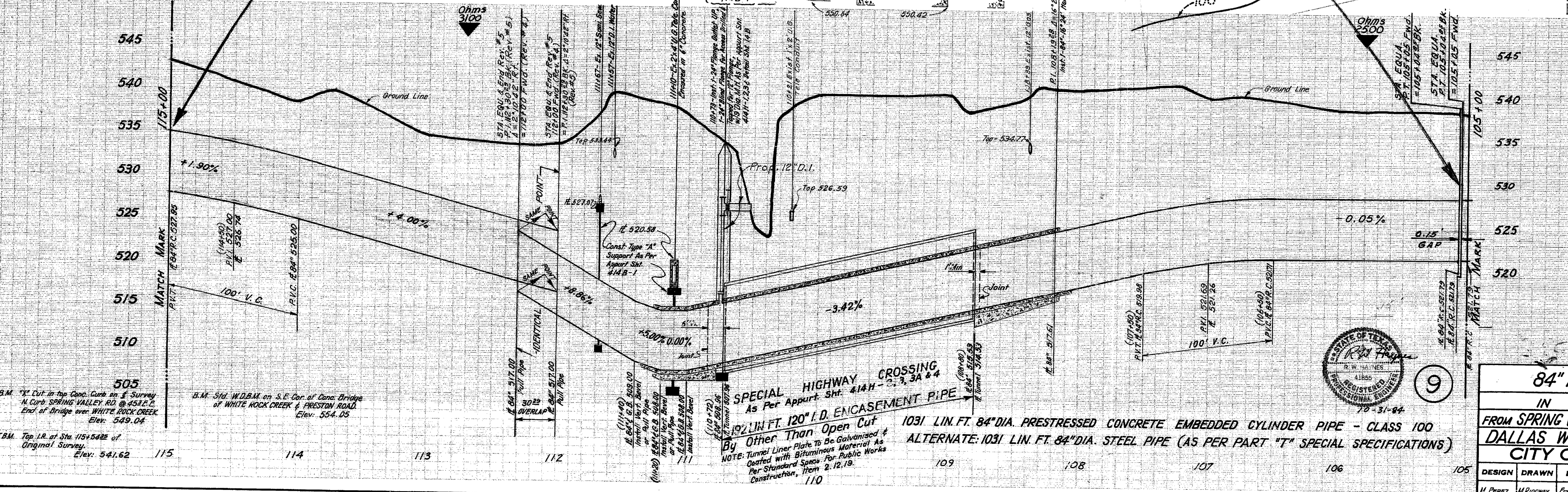


NOTE:
For information on additional
surveys plotted on this line,
See 685W-660B folder in Water
Design Files.

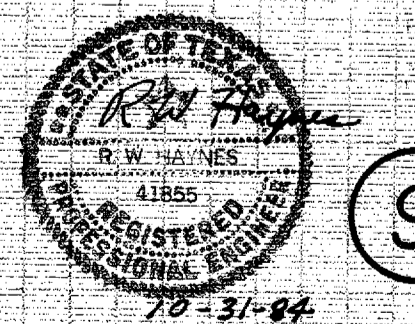
STATE DEPARTMENT OF HIGHWAYS
& PUBLIC TRANSPORTATION APPROVAL
For an 84" Water Main Within the R.O.W. of
Preston Road State Highway 289.
Contractor to be Contacted James Simmons
Telephone (214) 235-3124 at least 48
Hours Prior to Starting Construction in
Order that they may have a Representative
Present.
Date: July 17, 1984. Expiration Date:
January 17, 1985. Permit # 704078
Control 31 Section 6.

TREE LEGEND
Trees Saved or Removed Along 60' Restricted
Clearing Area. Sta. 105+00 to 108+10'
Removed - X Saved - Δ
No. 1-24" Oak
No. 2-8" Elm
No. 3-20" Oak
No. 4-12" Elm
No. 5-24" Elm
No. 6-24" Ash
No. 7-10" Elm
No. 8-10" Elm
No. 9-24" Ash
No. 10-11 Elm Same Tree 36" Oak
No. 11-24" Elm
No. 12-24" Elm
No. 13-20" Elm
No. 14-20" Elm
No. 15-20" Elm
No. 16-20" Elm
No. 17-20" Elm
No. 18-20" Elm
No. 19-20" Elm
No. 20-20" Elm
No. 21-20" Elm
No. 22-20" Elm
No. 23-20" Elm
No. 24-20" Elm
No. 25-20" Elm
No. 26-20" Elm
No. 27-20" Elm
No. 28-20" Elm
No. 29-20" Elm
No. 30-20" Elm
No. 31-20" Elm
No. 32-20" Elm
No. 33-20" Elm
No. 34-20" Elm
No. 35-20" Elm
No. 36-20" Elm
No. 37-20" Elm
No. 38-20" Elm
No. 39-20" Elm
No. 40-20" Elm

CONT. NO. 84-45



SEWER KEY MAP F-2 WATER MAP 8-24 W



84" R.C. WATER MAIN
IN CELESTIAL ROAD
FROM SPRING VALLEY TO DALLAS N. PKWY.
DALLAS WATER UTILITIES DEPT.
CITY OF DALLAS, TEXAS

DESIGN	DRAWN	DATE	SCALE	NOTES	FILE	NO.
M. Perez	M. Ridgway	Feb. 1984	1" = 40'		685W 660B	

B.M. "X" Cut in the Conc. Curb on S. Survey
N. Curb SPRING VALLEY RD. @ 453 E.E.
End of Bridge over WHITE ROCK CREEK
Elev. 549.04

B.M. Std. W.D.B.M. on S.E. Cor. of Conc. Bridge
of WHITE ROCK CREEK & PRESTON ROAD.
Elev. 554.05

T.B.M. Top I.R. of Sta. 115+54.25 of
Original Survey.
Elev. 541.62

W.A.# 7WA 212

15000 Preston Associates May 14, 1985
30' Eas't for Maintaining Water Main or Mains
or Appurtenances.
Abt. 524 Block 9174 Lot 1
Vol. 82038 Pg. 2172
C.O. Date:

First Federal Savings & Loan of Waco July 9, 1985
30' Eas't for Maintaining Water Main or Mains
or Appurtenances.
Abt. 1571 524 Blocks 8165 & 8173
Vol. 82179 Pg. 2172
C.O. Date:

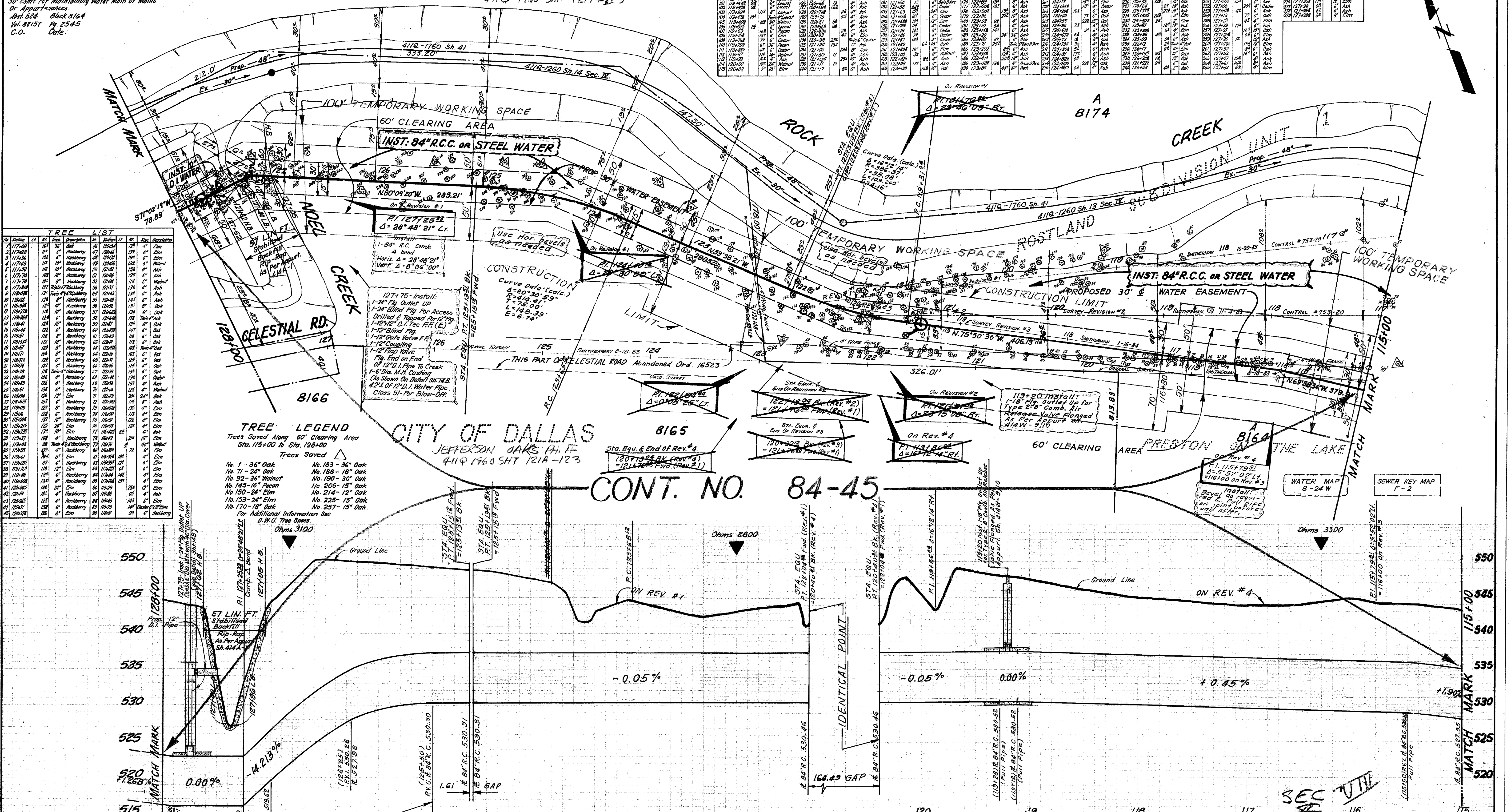
WHITE 8173 Jefferson Oaks Ph II
411Q 1960 SH. 121A-123

Station	LT	Tree Description	Station	LT	Tree Description
1	1177.00	118'	1	1177.00	118'
2	1177.00	118'	2	1177.00	118'
3	1177.00	118'	3	1177.00	118'
4	1177.00	118'	4	1177.00	118'
5	1177.00	118'	5	1177.00	118'
6	1177.00	118'	6	1177.00	118'
7	1177.00	118'	7	1177.00	118'
8	1177.00	118'	8	1177.00	118'
9	1177.00	118'	9	1177.00	118'
10	1177.00	118'	10	1177.00	118'
11	1177.00	118'	11	1177.00	118'
12	1177.00	118'	12	1177.00	118'
13	1177.00	118'	13	1177.00	118'
14	1177.00	118'	14	1177.00	118'
15	1177.00	118'	15	1177.00	118'
16	1177.00	118'	16	1177.00	118'
17	1177.00	118'	17	1177.00	118'
18	1177.00	118'	18	1177.00	118'
19	1177.00	118'	19	1177.00	118'
20	1177.00	118'	20	1177.00	118'
21	1177.00	118'	21	1177.00	118'
22	1177.00	118'	22	1177.00	118'
23	1177.00	118'	23	1177.00	118'
24	1177.00	118'	24	1177.00	118'
25	1177.00	118'	25	1177.00	118'
26	1177.00	118'	26	1177.00	118'
27	1177.00	118'	27	1177.00	118'
28	1177.00	118'	28	1177.00	118'
29	1177.00	118'	29	1177.00	118'
30	1177.00	118'	30	1177.00	118'
31	1177.00	118'	31	1177.00	118'
32	1177.00	118'	32	1177.00	118'
33	1177.00	118'	33	1177.00	118'
34	1177.00	118'	34	1177.00	118'
35	1177.00	118'	35	1177.00	118'
36	1177.00	118'	36	1177.00	118'
37	1177.00	118'	37	1177.00	118'
38	1177.00	118'	38	1177.00	118'
39	1177.00	118'	39	1177.00	118'
40	1177.00	118'	40	1177.00	118'
41	1177.00	118'	41	1177.00	118'
42	1177.00	118'	42	1177.00	118'
43	1177.00	118'	43	1177.00	118'
44	1177.00	118'	44	1177.00	118'
45	1177.00	118'	45	1177.00	118'

TREE LEGEND
Trees Saved Along 60' Clearing Area
Sta. 115+00 to Sta. 128+00
Trees Saved

No. 1 - 36" Oak	No. 183 - 36" Oak
No. 71 - 24" Oak	No. 188 - 18" Oak
No. 92 - 36" Walnut	No. 190 - 30" Oak
No. 145 - 16" Pecan	No. 205 - 15" Oak
No. 150 - 34" Elm	No. 214 - 12" Oak
No. 153 - 24" Elm	No. 225 - 15" Oak
No. 170 - 18" Oak	No. 257 - 15" Oak

Station	LT	Tree Description	Station	LT	Tree Description
1	118.87	118'	1	118.87	118'
2	118.87	118'	2	118.87	118'
3	118.87	118'	3	118.87	118'
4	118.87	118'	4	118.87	118'
5	118.87	118'	5	118.87	118'
6	118.87	118'	6	118.87	118'
7	118.87	118'	7	118.87	118'
8	118.87	118'	8	118.87	118'
9	118.87	118'	9	118.87	118'
10	118.87	118'	10	118.87	118'
11	118.87	118'	11	118.87	118'
12	118.87	118'	12	118.87	118'
13	118.87	118'	13	118.87	118'
14	118.87	118'	14	118.87	118'
15	118.87	118'	15	118.87	118'
16	118.87	118'	16	118.87	118'
17	118.87	118'	17	118.87	118'
18	118.87	118'	18	118.87	118'
19	118.87	118'	19	118.87	118'
20	118.87	118'	20	118.87	118'
21	118.87	118'	21	118.87	118'
22	118.87	118'	22	118.87	118'
23	118.87	118'	23	118.87	118'
24	118.87	118'	24	118.87	118'
25	118.87	118'	25	118.87	118'
26	118.87	118'	26	118.87	118'
27	118.87	118'	27	118.87	118'
28	118.87	118'	28	118.87	118'
29	118.87	118'	29	118.87	118'
30	118.87	118'	30	118.87	118'



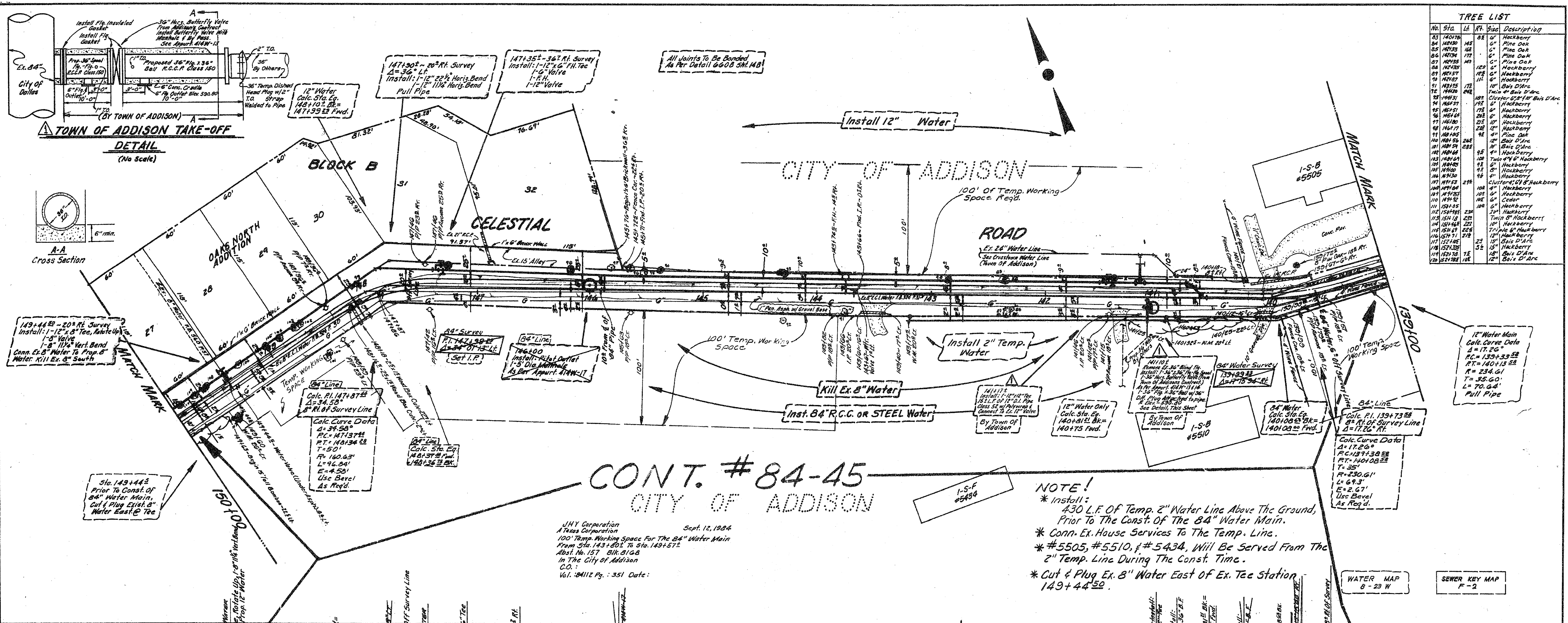
1134 LIN. FT. 84" DIA. PRESTRESSED CONCRETE EMBEDDED CYLINDER PIPE - CLASS 100
ALTERNATE: 1134 LIN. FT. 84" DIA. STEEL PIPE (AS PER PART "T" SPECIAL SPECIFICATIONS)

SEC 10

DESIGN	DRAWN	DATE	SCALE	NOTES	FILE	NO.
M. PAREZ	H. RIDGWAY	JAN '88	1/4" = 1'-0"	VERT. 1" = 4'	085WGG08	

STATE OF TEXAS
REGISTERED PROFESSIONAL ENGINEER
No. 4385
JAN 31 1988

B.M. - STD. W.D.B.M. ON S.E. CORNER OF CONC. BRIDGE OF WHITE ROCK CREEK & PRESTON RD. ELEV. -554.05
B.M. - GOD. NAIL IN PIP#12N-1W-107. 17 1/2" LT. STA. 131+93.3 S. SIDE OF CELESTIAL RD. & 200' E. OF WINWOOD RD. ELEV. -555.40
T.B.M. - TOP OF I.R. @ STA. 115+54.33. OF ORIG. SURVEY. ELEV. -541.02



TREE LIST			
No.	Sta.	Lt.	Description
83	140750	88	6\" Hackberry
84	140750	148	6\" Pine Oak
85	140750	222	6\" Pine Oak
86	140750	172	6\" Pine Oak
87	140750	142	6\" Pine Oak
88	140750	122	6\" Hackberry
89	140750	102	6\" Hackberry
90	140750	112	6\" Hackberry
91	140750	172	10\" Oak D'Arc
92	140750	202	10\" Oak D'Arc
93	140750	182	10\" Oak D'Arc
94	140750	172	6\" Hackberry
95	140750	172	6\" Hackberry
96	140750	202	6\" Hackberry
97	140750	222	6\" Hackberry
98	140750	222	6\" Hackberry
99	140750	222	6\" Hackberry
100	140750	222	6\" Hackberry
101	140750	222	6\" Hackberry
102	140750	222	6\" Hackberry
103	140750	222	6\" Hackberry
104	140750	222	6\" Hackberry
105	140750	222	6\" Hackberry
106	140750	222	6\" Hackberry
107	140750	222	6\" Hackberry
108	140750	222	6\" Hackberry
109	140750	222	6\" Hackberry
110	140750	222	6\" Hackberry
111	140750	222	6\" Hackberry
112	140750	222	6\" Hackberry
113	140750	222	6\" Hackberry
114	140750	222	6\" Hackberry
115	140750	222	6\" Hackberry
116	140750	222	6\" Hackberry
117	140750	222	6\" Hackberry
118	140750	222	6\" Hackberry
119	140750	222	6\" Hackberry
120	140750	222	6\" Hackberry

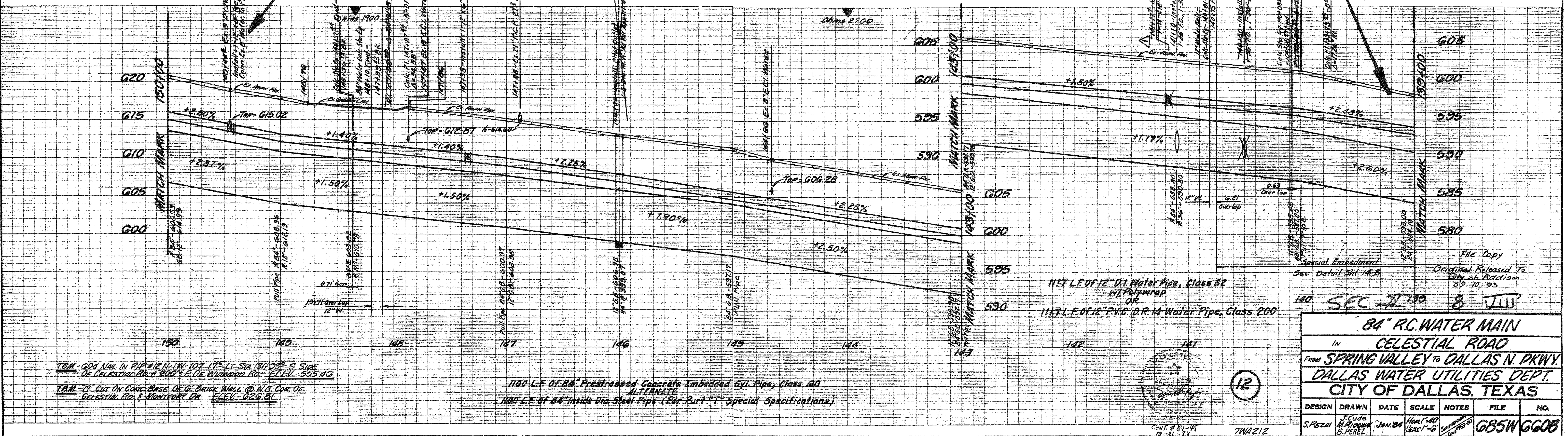
CONT. # 84-45
CITY OF ADDISON

JHY Corporation
A Texas Corporation
Sept. 12, 1984
100' Temp. Working Space For The 84\" Water Main
From Sta. 143+00' To Sta. 149+57'
Asst. No. 157. S.H. 5102
In The City of Addison
C.O.:
Vol. 84112 Pg. 351 Date:

NOTE!
* Install:
430 L.F. OF Temp. 2\" Water Line Above The Ground,
Prior To The Const. Of The 84\" Water Main.
* Conn. Ex. House Services To The Temp. Line.
* #5505, #5510, #5434, Will Be Served From The
2\" Temp. Line During The Const. Time.
* Cut & Plug Ex. 8\" Water East Of Ex. Tee Station
149+44.52.

WATER MAP
8 - 23 W

SEWER KEY MAP
F - 2



File Copy
Original Released To
City of Addison
09.10.93

140 SEC 7130 8 JUL

84\" R.C. WATER MAIN
IN **CELESTIAL ROAD**
FROM **SPRING VALLEY TO DALLAS N. PKWY.**
DALLAS WATER UTILITIES DEPT.
CITY OF DALLAS, TEXAS

DESIGN	DRAWN	DATE	SCALE	NOTES	FILE	NO.
S. PEREZ	M. PEREZ	JAN 28 1984	1\" = 40' 1\" = 10'		085W 6608	

Revised By: S. Regui 3-5-85 Nov. 14, 1985

Curve Data For Rev. 84' Alignment
P.C. 151+42.32
R=750.00'
L=275.33'
T=137.665'
E.T. = 337.23'
L=275.33'
P.T. = 181.093'
Use Bevels & Pull Pipe
As Required

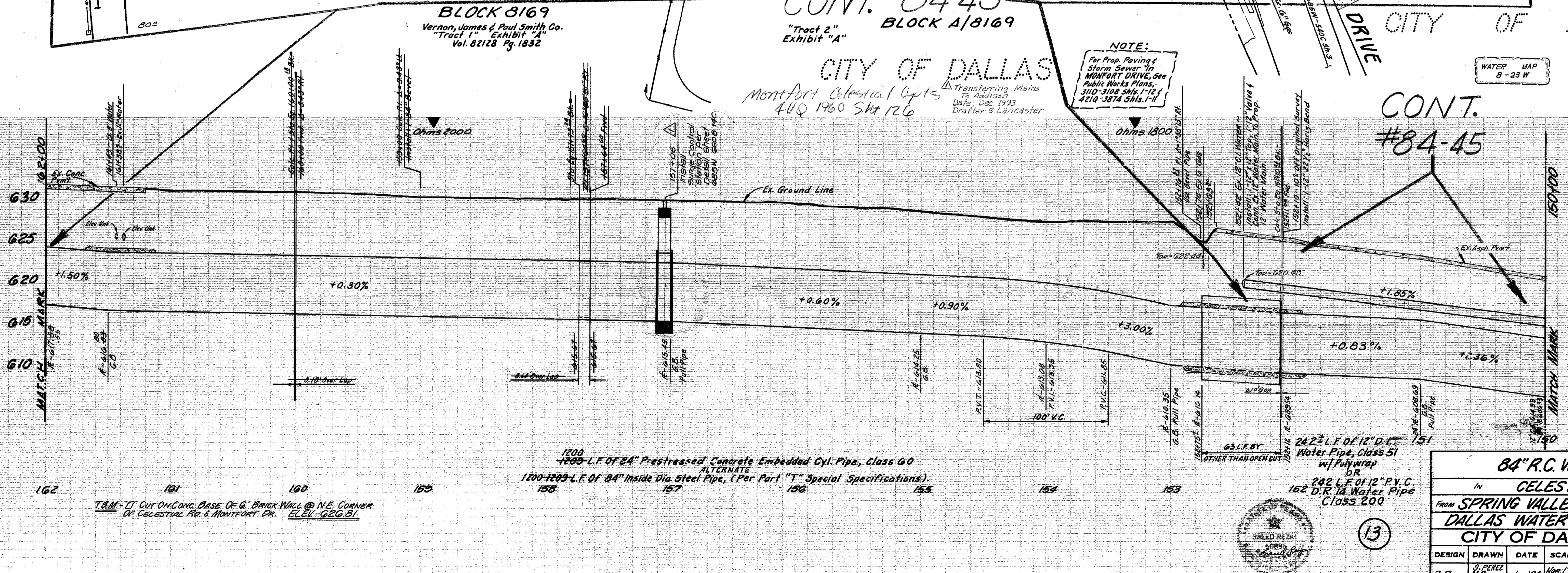
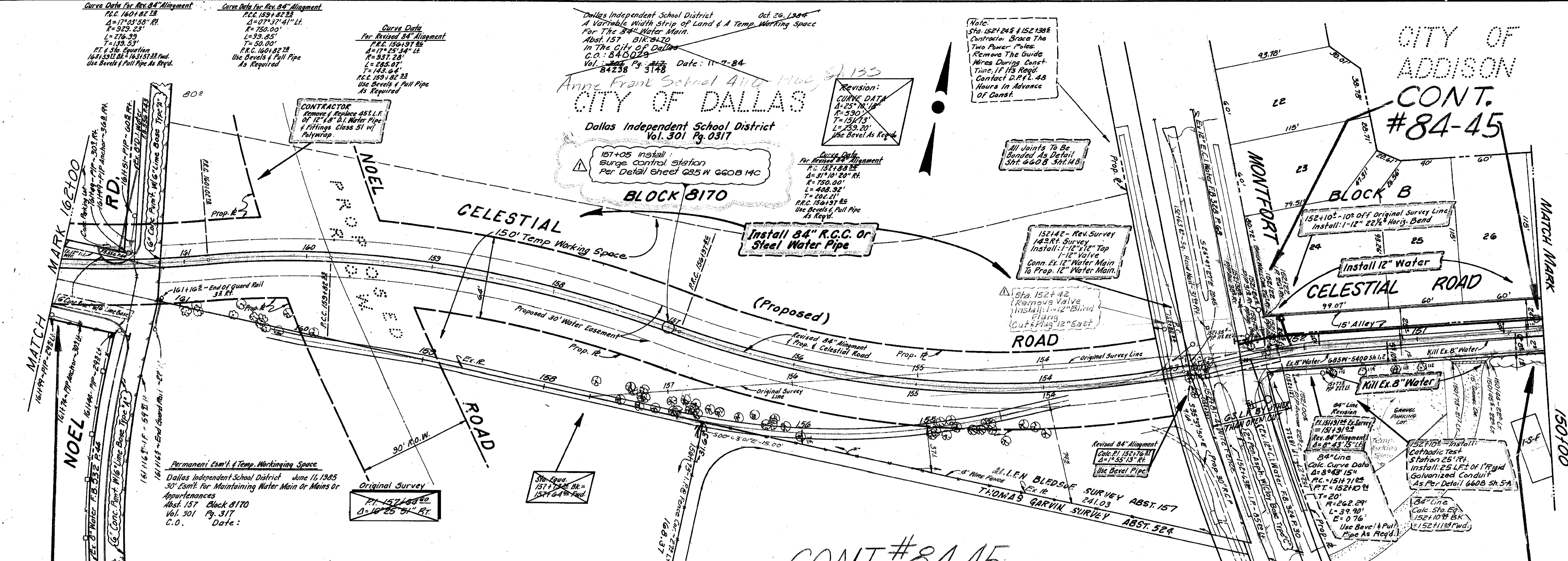
Curve Data
For Revised 84' Alignment
P.C. 151+42.32
R=750.00'
L=275.33'
T=137.665'
E.T. = 337.23'
L=275.33'
P.T. = 181.093'
Use Bevels & Pull Pipe
As Required

Dallas Independent School District
A Variable Width Strip of Land & A Temp. Working Space
For The 84" Water Main.
Abst. 157 Bk. 4120
In The City of Dallas
C.O. 840228
Vol. 82238 Pg. 3148
Date: 11-7-84

Note:
Sta. 152+24.5 & 152+138.6
Contractor Brace The
Two Power Poles.
Remove The Guide
Wires During Const.
Time, If 15' Regd.
Contact D.P.L. 43
Hours In Advance
Of Const.

CITY OF
ADDISON
CONT.
#84-45

Sta.	Tree	Size	Description
152+78	50	12"	Bois D'Arc
152+85	12	12"	Bois D'Arc
152+88	43	6"	Cluster Hackberry
152+90	43	6"	Hackberry
152+92	43	6"	Hackberry
152+94	43	6"	Twin Hackberry
152+96	43	6"	Triples Bois D'Arc
152+98	43	6"	Hackberry
152+100	43	6"	Hackberry
152+102	43	6"	Bois D'Arc
152+104	43	6"	Twin Bois D'Arc
152+106	43	6"	Twin Hackberry
152+108	43	6"	Hackberry
152+110	43	6"	Hackberry
152+112	43	6"	Hackberry
152+114	43	6"	Hackberry
152+116	43	6"	Hackberry
152+118	43	6"	Hackberry
152+120	43	6"	Hackberry
152+122	43	6"	Hackberry
152+124	43	6"	Hackberry
152+126	43	6"	Hackberry
152+128	43	6"	Hackberry
152+130	43	6"	Hackberry
152+132	43	6"	Hackberry
152+134	43	6"	Hackberry
152+136	43	6"	Hackberry
152+138	43	6"	Hackberry
152+140	43	6"	Hackberry
152+142	43	6"	Hackberry
152+144	43	6"	Hackberry
152+146	43	6"	Hackberry
152+148	43	6"	Hackberry
152+150	43	6"	Hackberry
152+152	43	6"	Hackberry
152+154	43	6"	Hackberry
152+156	43	6"	Hackberry
152+158	43	6"	Hackberry
152+160	43	6"	Hackberry
152+162	43	6"	Hackberry
152+164	43	6"	Hackberry
152+166	43	6"	Hackberry
152+168	43	6"	Hackberry
152+170	43	6"	Hackberry
152+172	43	6"	Hackberry
152+174	43	6"	Hackberry
152+176	43	6"	Hackberry
152+178	43	6"	Hackberry
152+180	43	6"	Hackberry
152+182	43	6"	Hackberry
152+184	43	6"	Hackberry
152+186	43	6"	Hackberry
152+188	43	6"	Hackberry
152+190	43	6"	Hackberry
152+192	43	6"	Hackberry
152+194	43	6"	Hackberry
152+196	43	6"	Hackberry
152+198	43	6"	Hackberry
152+200	43	6"	Hackberry
152+202	43	6"	Hackberry
152+204	43	6"	Hackberry
152+206	43	6"	Hackberry
152+208	43	6"	Hackberry
152+210	43	6"	Hackberry
152+212	43	6"	Hackberry
152+214	43	6"	Hackberry
152+216	43	6"	Hackberry
152+218	43	6"	Hackberry
152+220	43	6"	Hackberry
152+222	43	6"	Hackberry
152+224	43	6"	Hackberry
152+226	43	6"	Hackberry
152+228	43	6"	Hackberry
152+230	43	6"	Hackberry
152+232	43	6"	Hackberry
152+234	43	6"	Hackberry
152+236	43	6"	Hackberry
152+238	43	6"	Hackberry
152+240	43	6"	Hackberry
152+242	43	6"	Hackberry
152+244	43	6"	Hackberry
152+246	43	6"	Hackberry
152+248	43	6"	Hackberry
152+250	43	6"	Hackberry
152+252	43	6"	Hackberry
152+254	43	6"	Hackberry
152+256	43	6"	Hackberry
152+258	43	6"	Hackberry
152+260	43	6"	Hackberry
152+262	43	6"	Hackberry
152+264	43	6"	Hackberry
152+266	43	6"	Hackberry
152+268	43	6"	Hackberry
152+270	43	6"	Hackberry
152+272	43	6"	Hackberry
152+274	43	6"	Hackberry
152+276	43	6"	Hackberry
152+278	43	6"	Hackberry
152+280	43	6"	Hackberry
152+282	43	6"	Hackberry
152+284	43	6"	Hackberry
152+286	43	6"	Hackberry
152+288	43	6"	Hackberry
152+290	43	6"	Hackberry
152+292	43	6"	Hackberry
152+294	43	6"	Hackberry
152+296	43	6"	Hackberry
152+298	43	6"	Hackberry
152+300	43	6"	Hackberry



84" R.C. WATER MAIN
 IN CELESTIAL ROAD
 FROM SPRING VALLEY TO DALLAS N. PKWY.
 DALLAS WATER UTILITIES DEPT.
 CITY OF DALLAS, TEXAS

DESIGN	DRAWN	DATE	SCALE	NOTES	FILE	NO.
S. REZA	S. PEREZ	JAN '88	HOR. 1"=40'	VERT. 1"=4'	G85W 660B	



Revised By: Doug Munnell 5-14-85 Cont. # 84-45

PARKWAY

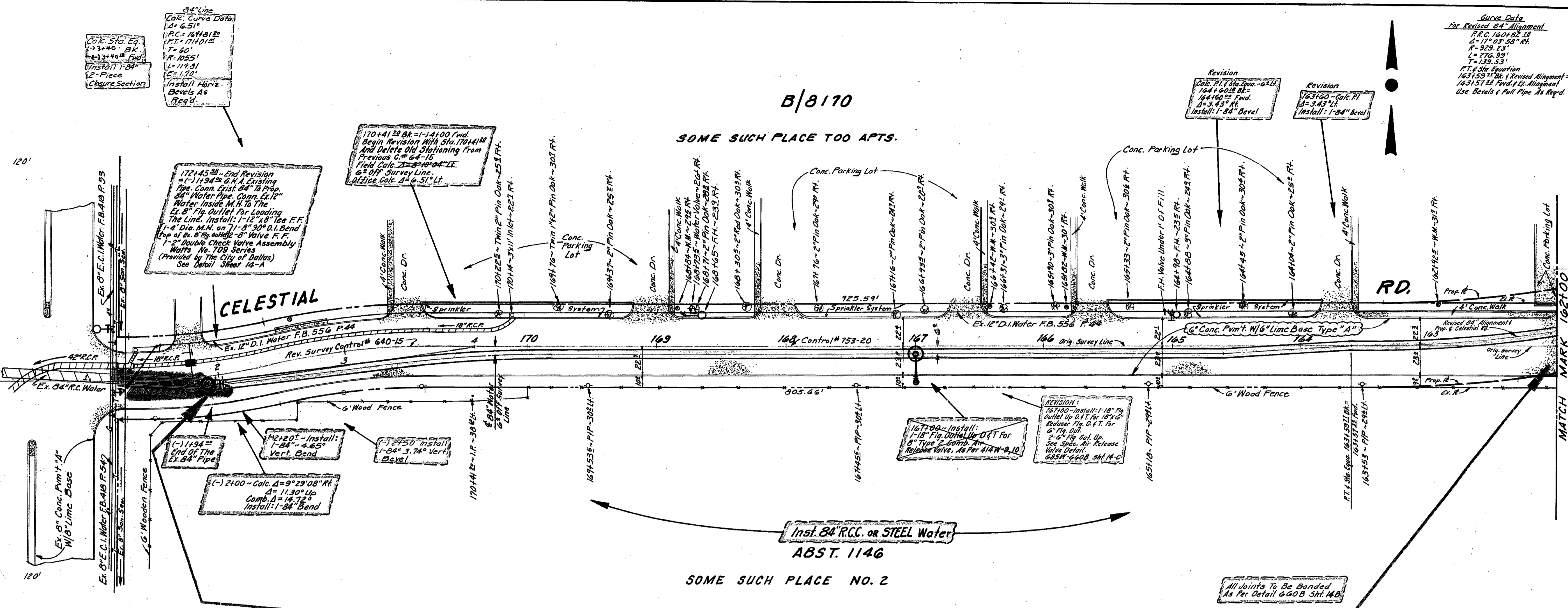
DALLAS

B/3170

SOME SUCH PLACE TOO APTS.

SOME SUCH PLACE NO. 2

CONT. #84-45



84" Line
Calc. Curve Data
d = 6.51'
P.C. 1671.8122
P.T. 1711.0122
T = 62'
R = 1055'
L = 114.81'
E = 1.70'
Install Horiz.
Bevels As Req'd.

172+45.38 - End Revision
= (-) 1.1548' 84" Existing
Pipe. Conn. Ex. 84" to Prop.
84" Water Pipe. Conn. Ex. 12"
Water Inside M.H. To The
Ex. 8" Sig. Outlet For Loading
The Line. Install: 1'-12" 8" Tee F.F.
(-) 4 Dia. M.H. on 7'-8" 30" O.I. Bend
Top of Ex. 8" sig. outlet 8" Valve F.F.
1'-2" Double Check Valve Assembly
Works No. 170 Series
(Provided by The City of Dallas
See Detail Sheet 1A-A)

170+41.22 BK = (-) 41.00' Fwd.
Begin Revision With Sta. 170+41.22
And Delete Old Stationing From
Previous C. # 64-15
Field Calc. 2'-10" 84" L.T.
Office Calc. d = 6.51' Lt.

Curve Data
For Revised 84" Alignment
P.C. 1601.82 13
d = 17' 03" 58" Rt.
R = 325.23'
T = 276.99'
L = 139.53'
PT 14 Site Quarter
163159.12' (Revised Alignment =
163157.24' Fwd. 1.88' Alignment
Use Bevels & Pull Pipe As Req'd.)

Revision
Calc. P.I.T. Sta. Exp. = 64.11'
164+00.25 BK =
164+60.25 Fwd.
d = 3.43' Lt.
Install: 1'-84" Bevel

Revision
163159.12' Calc. P.I.
d = 3.43' Lt.
Install: 1'-84" Bevel

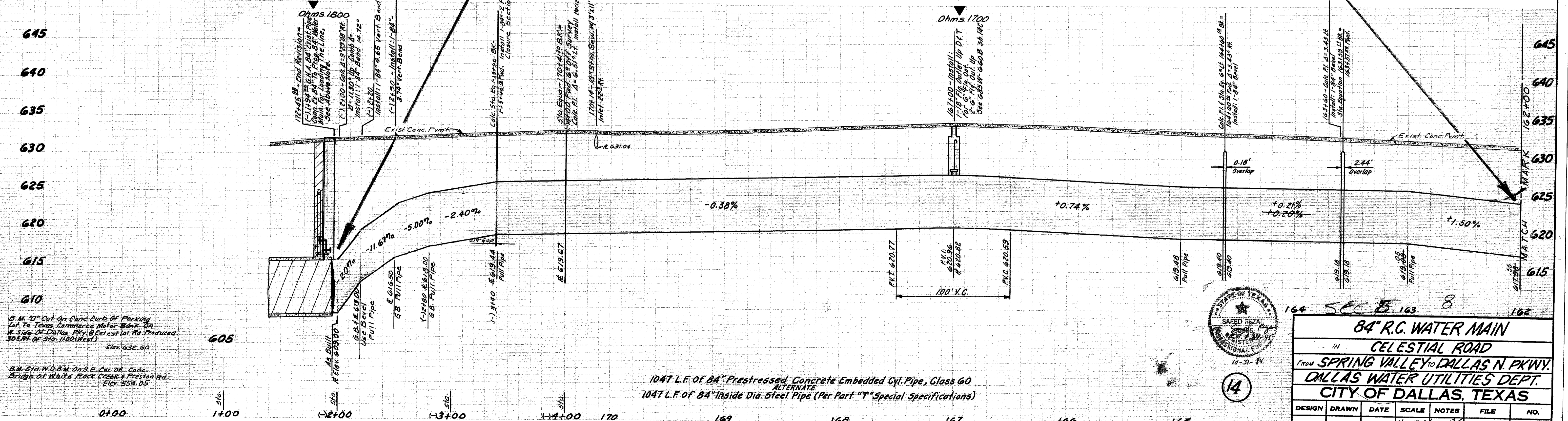
REVISION:
1677.99 - Install:
1'-18" Sig. Outlet Up DFT For
3" Pipe 2-5000. The
Release Valve, As Per 414W-9.10.
16511.0 - P.I.P. = 2741.1'

Inst. 84" R.C.C. OR STEEL WATER
ABST. 1146

All Joints To Be Bonded
As Per Detail 6-60 B Sh. 140

WATER MAP
8-22 W
9-23 W

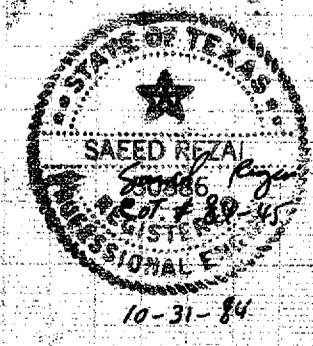
SEWER KEY MAP
F-2



B.M. 14' Cut On Conc. Curb of Parking
Lot To Texas Commerce Motor Bank On
W. Side Of Dallas Pkwy. @ Celestial Rd. Produced
30.5' R.L. Of Sta. 1100 (West)
Elev. 632.60

B.M. Sid. W.D.B.M. On S.E. Cor. Of Conc.
Bridge Of White Rock Creek & Preston Rd.
Elev. 554.05

1047 L.F. OF 84" Prestressed Concrete Embedded Cyl. Pipe, Class 60
ALTERNATE
1047 L.F. OF 84" Inside Dia. Steel Pipe (Per Part "T" Special Specifications)



84" R.C. WATER MAIN					
IN CELESTIAL ROAD					
FROM SPRING VALLEY TO DALLAS N. PKWY.					
DALLAS WATER UTILITIES DEPT.					
CITY OF DALLAS, TEXAS					
DESIGN	DRAWN	DATE	SCALE	NOTES	FILE NO.
S. RECA	J. CUDE	JAN. 84	1/8" = 1'-0"	REVISED	685W 660B

Revised By: Doug Munnell 5-14-85
Revision By: J. Regal 6-27-85