

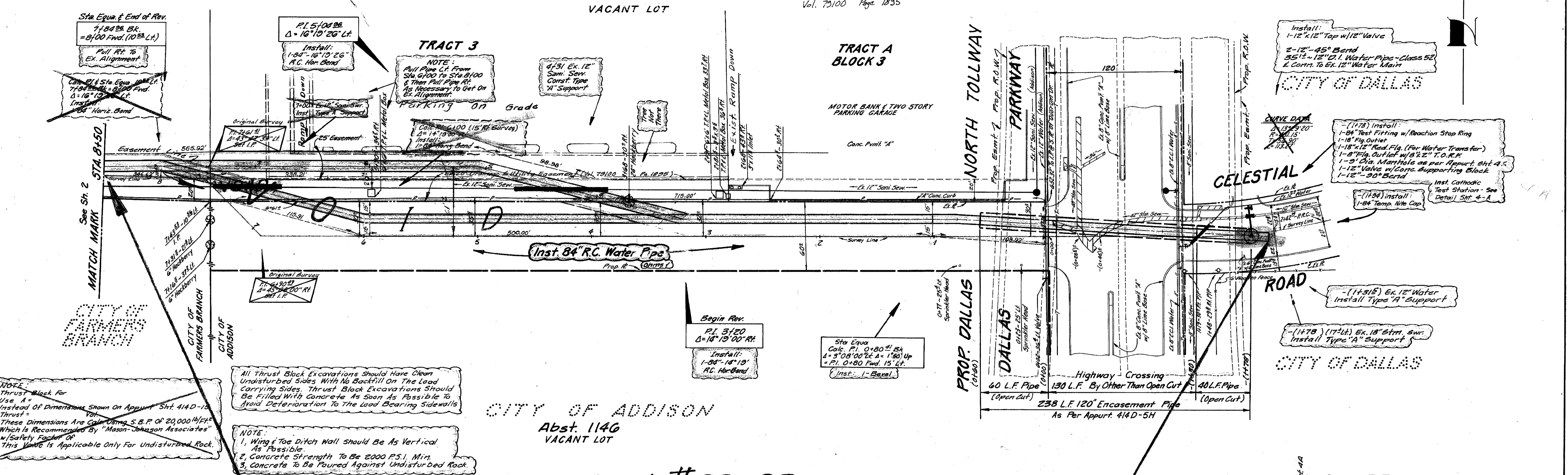
**NOTE:**  
Thrust Block For Use A - Instead Of Dimensions Shown On Appurt. Sht. 414-D-15 Thrust - These Dimensions Are Given Using S.B.P. OF 20,000 Lb/Sq Ft. Which Is Recommended By "Mason-Johnson Associates" w/ Safety Factor OF This Value Is Applicable Only For Undisturbed Rock.

Vantage Properties, Inc. March 11, 1983  
30' Easement For A 84" Water Main From Sta. 0+00 to Sta. 6+16.17  
Abst. 1146 In The City of Addison Temp. Working Space Granted See Conditions Accompanying This Easement.  
C.O.: Pg.: Date:

A Letter from John S. Reagan, Santa Fe Land Improvement Co., Will Serve As Temporary Agreement In Lieu Of Formal Easement Document Dated Oct. 20, 1983 Revising The Original Easement Dated April 12, 1983.  
Tract B - Block 3

Santa Fe Land Improvement Co., April 12, 1983  
Easement For A 84" Water Main From Sta. 7+09.2 to Sta. 13+72.5  
Abst. 1146, Blk. 3 of Quorum West In The City of Addison Temp. Working Space Granted See Conditions Accompanying This Easement  
C.O.: 830029 Pg.: 2847 Date: Easement Of Connection - 3/22/84 (Asld)  
Vol.: 79100 Page 1835

**Abst. 1146**  
**CITY OF ADDISON**  
**VACANT LOT**



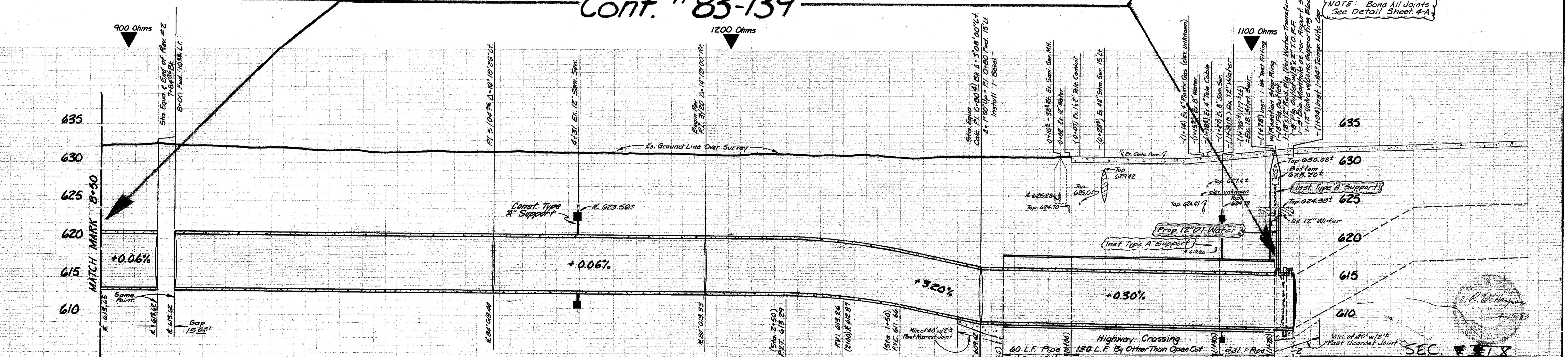
**NOTE:**  
Thrust Block For Use A - Instead Of Dimensions Shown On Appurt. Sht. 414-D-15 Thrust - These Dimensions Are Given Using S.B.P. OF 20,000 Lb/Sq Ft. Which Is Recommended By "Mason-Johnson Associates" w/ Safety Factor OF This Value Is Applicable Only For Undisturbed Rock.

All Thrust Block Excavations Should Have Clean Undisturbed Sides With No Backfill On The Load Carrying Sides. Thrust Block Excavations Should Be Filled With Concrete As Soon As Possible To Avoid Deterioration To The Load Bearing Side Walls.

**NOTE:**  
1. Wing & Toe Ditch Wall Should Be As Vertical As Possible.  
2. Concrete Strength To Be 2000 P.S.I. Min.  
3. Concrete To Be Poured Against Undisturbed Rock.

**CITY OF ADDISON**  
**Abst. 1146**  
**VACANT LOT**

**Cont. # 83-139**



1030 Lin. Ft. 84" Dia. Prestressed Concrete Embedded Cylinder Pipe - Class 60

**Encasement Specification:**  
Alt. B - 238 of 114" 2-Flg. Circular Liner Plate, 8 Gauge, Galv.; Or 4-Flg. Circular Liner Plate, 8 Gauge Galv.  
See General Notes Appurt. Sht. 414D-5H

**SEC II**

**SHEET 1**

84" R.C. WATER MAIN					
IN QUORUM AREA FR. DALLAS PARKWAY AT CELESTIAL DR TO BELTWOOD RESERVOIR					
DALLAS WATER UTILITIES DEPARTMENT					
CITY OF DALLAS, TEXAS					
DESIGN	DRAWN	DATE	SCALE	NOTES	FILE NO.
S. Regal	S. Regal M. Burke	Feb. 1983	1" = 40' Horiz. 1" = 6' Vert.	Smitherman #640-15	685W 660C

**B.M. 'D' Cut on Conc. Curb of Parking Lot of Texas Commerce Motor Bank on W. Side of Dallas Hwy. (Celestial Dr.) Produced 30' Easement of Sta. 1000 (West) File 632-60**

B26-14  
84" DWV

B26-14  
84" DWV