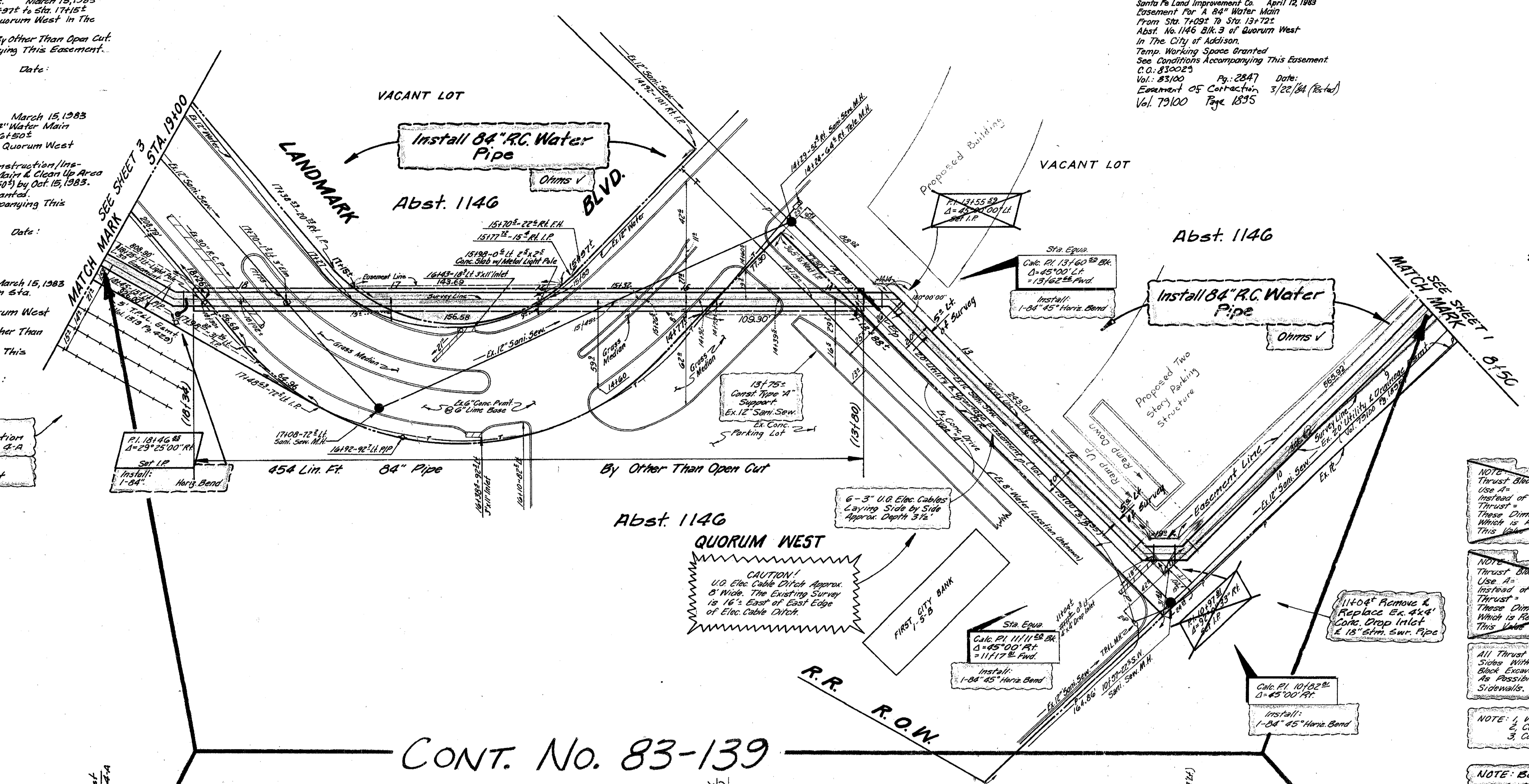


Warr-Clay International, Inc. March 15, 1983
A Strip of Land from Sta. 16497 to Sta. 17152
Abst. No. 1146 Blk. 2 of Quorum West in The
City of Addison
Installation of Water Main, By Other Than Open Cut.
See Conditions Accompanying This Easement.
C.O. Vol. Pg. Date:

Landmark Partners, March 15, 1983
A 30' Easement For A 84" Water Main
From Sta. 18126 to Sta. 20150
Abst. No. 1146 Blk. 1 of Quorum West
in The City of Addison.
Contractor To Complete Construction/Installation
of 84" Water Main & Clean Up Area
(From Sta. 18126 to Sta. 20150) by Oct. 15, 1983.
Temp. Working Space Granted.
SEE CONDITIONS Accompanying This
Easement.
C.O. Vol. Pg. Date:

First City Bank Corp. of Texas, Inc. March 15, 1983
A Triangular Tract of Land from Sta.
13188 to Sta. 14177
Abst. No. 1146 Blk. 3 of Quorum West
in The City of Addison.
Installation of Water Main, By Other Than
Open Cut.
See Conditions Accompanying This
Easement.
C.O. Vol. Pg. Date:

Santa Fe Land Improvement Co. April 12, 1983
Easement For A 84" Water Main
From Sta. 71092 To Sta. 131722
Abst. No. 1146 Blk. 3 of Quorum West
in The City of Addison.
Temp. Working Space Granted
See Conditions Accompanying This Easement.
C.O. 830023 Vol. Pg. 2847 Date:
Easement of Contractor, 3/22/84 (Revised)
Vol. 79100 Page 1895



CITY OF ADDISON

NOTE: It Will Be The Contractors Responsibility To Use Sheeting To Protect The Ex. 12" Sewer, Storm Line Between Sta. 10497 to Sta. 18175 From Falling Into The Water Main Excavation. No Special Pay Will Be Provided For This Item, But The Cost Will Be Bred In Such Items As Are Provided.

NOTE: Brace All Power Poles As Required. Contractor Shall Contact Mr. D. E. Rich, of T.F.E.L. Co. At (214) 247-0175, Two Days Prior To Any Excavation of This Project. At Contractor Expense.

NOTE: Thrust Block For 20.42' Band at Sta. 18146. Use As Method of Dimensions Shown On Approp. Sht. #140-15. Thrust = Tons, Vol. = These Dimensions Are For Use Using S.P. of 20,000 LBS/FT² Which is Recommended By M.U. w/ Safety Factor of This Value is Applicable Only For Undisturbed Rock.

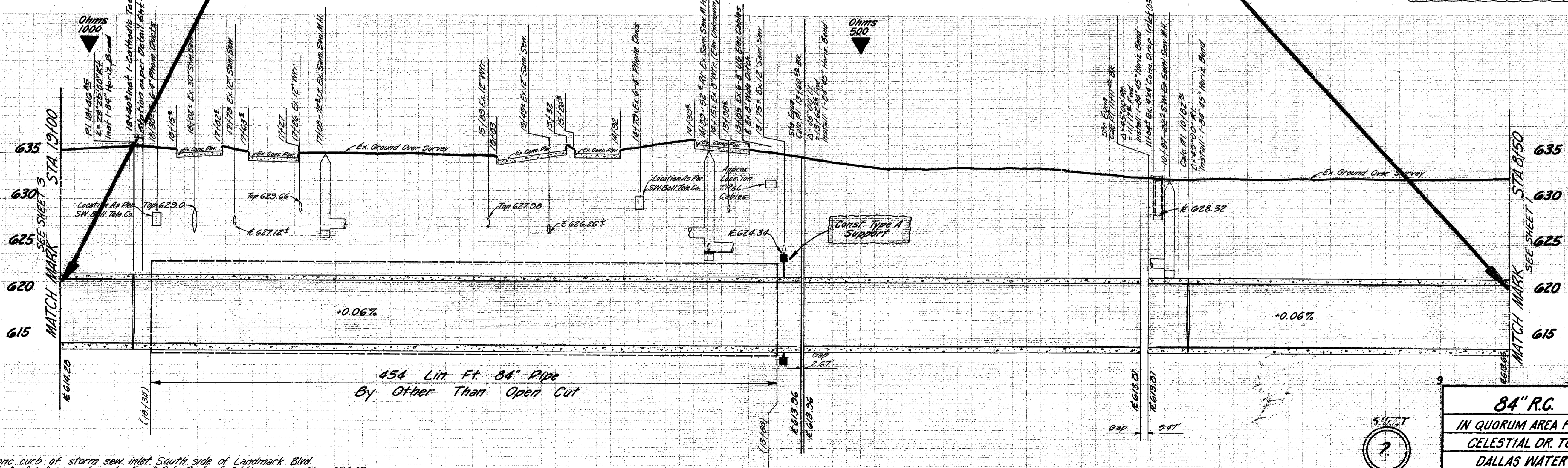
NOTE: Thrust Block For 45' Bands at Sta. 10102, 11117 & 12000. Use As Method of Dimensions Shown On Approp. Sht. #140-15. Thrust = Tons, Vol. = These Dimensions Are For Use Using S.P. of 20,000 LBS/FT² Which is Recommended By M.U. w/ Safety Factor of This Value is Applicable Only For Undisturbed Rock.

All Thrust Block Excavations Should Have Clean Undisturbed Sides With No Backfill On The Load Carrying Sides. Thrust Block Excavations Should Be Filled With Concrete As Soon As Possible To Avoid Deterioration To The Load Bearing Sidewalls.

NOTE: 1. Wing & Top Ditch Walls Should Be As Vertical As Possible.
2. Concrete Strength To Be 2000 P.S.I. Min.
3. Concrete To Be Poured Against Undisturbed Rock.

NOTE: Bond All Joints See Detail Sheet, 4-A

CONT. No. 83-139



R. L. Higgins
4-15-83

SEC. 9 IX

84" R.C. WATER MAIN					
IN QUORUM AREA FR. DALLAS PARKWAY AT CELESTIAL DR. TO BELTWOOD RESERVOIR					
DALLAS WATER UTILITIES DEPARTMENT					
CITY OF DALLAS, TEXAS					
DESIGN	DRAWN	DATE	SCALE	NOTES	FILE NO.
S. Regal	M. Ridgway S. Perez	Feb. 1983	1"=40' Hor. 1"=6' Vert.	Smitherman #440-15	685W 660C

T.B.M. - 1' on conc. curb of storm sew. inlet South side of Landmark Blvd. & 45' West of entrance drive to First City Bank of Addison. Elev. - 634.42

1042 Lin. Ft. 84" Dia. Prestressed Concrete Embedded Cylinder Pipe - Class 60