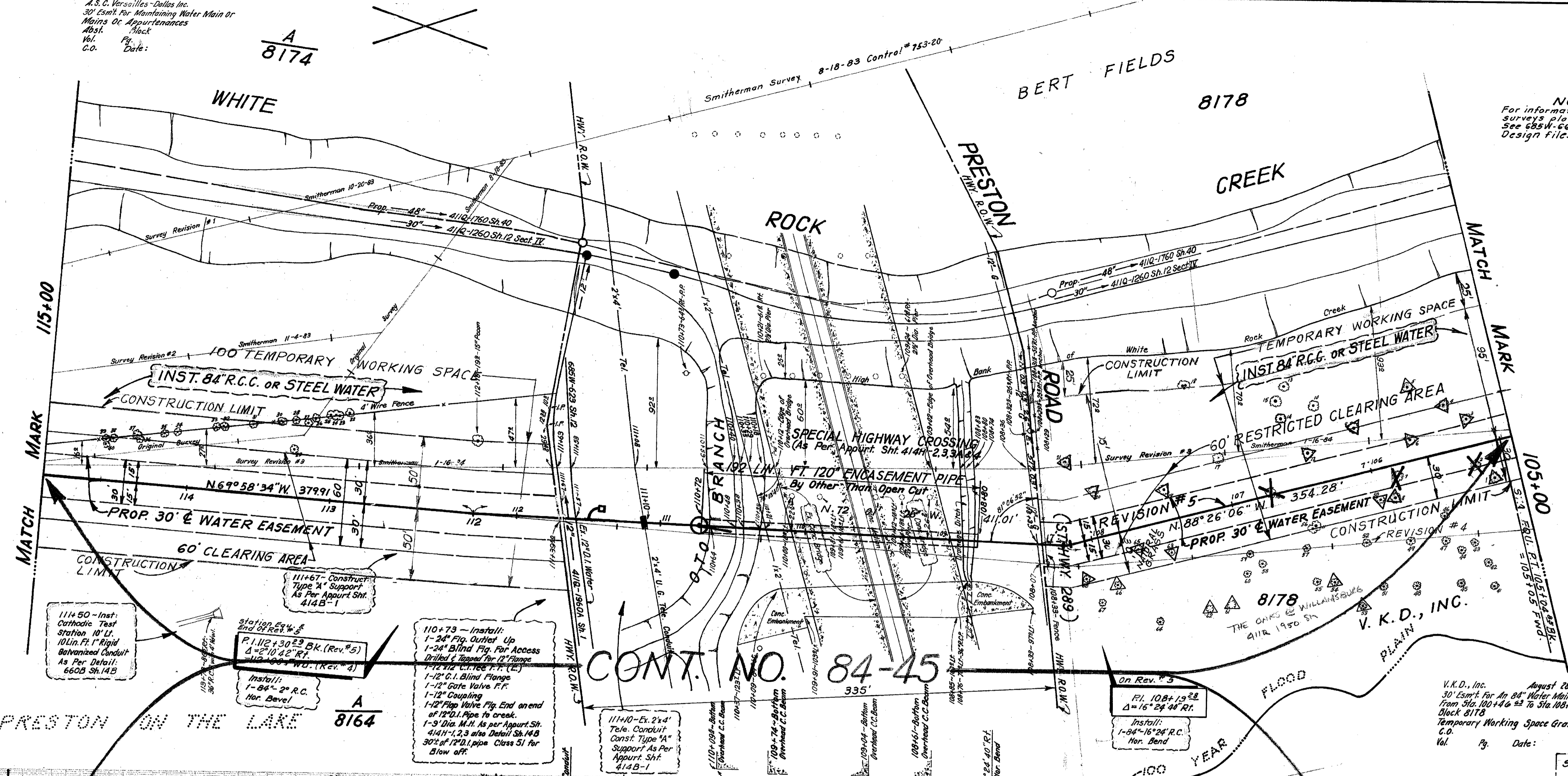


TREE LIST

Station	LT	RT	Size	Description
1	105+15	323	24"	Oak
2	105+27	221	24"	Oak
3	105+31	39	20"	Oak
4	105+45	308	12"	Elm
5	105+70	346	24"	Ash
6	105+71	19	24"	Ash
7	105+82	268	10"	Elm
8	105+86	408	12"	Elm
9	106+10	93	24"	Ash
10	106+36	274	8"	Elm
11	106+41	335	36"	Oak
12	106+49	301	36"	Ash
13	106+55	415	12"	Elm
14	106+60	194	15"	Elm
15	106+68	394	15"	Elm
16	106+70	394	15"	Elm
17	107+05	33	24"	Ash
18	107+34	478	36"	Hackberry
19	107+48	221	36"	Elm
20	107+58	495	36"	Pecan
21	108+11	38	24"	Pecan
Original Survey				
22	115+28	173	14"	Ash
23	115+39	118	8"	Hackberry
24	115+39	118	8"	Hackberry
25	115+39	78	8"	Hackberry
26	115+39	78	8"	Hackberry
27	115+46	11	4"	Elm
28	115+50	103	6"	Hackberry
29	115+62	103	10"	Hackberry
30	115+68	103	10"	Hackberry
31	115+88	108	10"	Hackberry
32	116+08	102	10"	Hackberry
33	116+14	108	6"	Hackberry
34	116+41	108	4"	Hackberry
35	116+50	108	10"	Hackberry
36	116+68	108	4"	Hackberry
37	116+68	108	4"	Hackberry
38	116+86	106	6"	Elm
39	116+98	106	10"	Elm
40	116+98	78	8"	Hackberry
Revision #1				
41	104+52	373	30"	Hackberry
42	104+54	365	30"	Elm
43	104+58	61	20"	Elm
44	104+72	113	20"	Hackberry
45	104+76	338	20"	Hackberry
46	104+82	101	20"	Hackberry
47	104+228	35	8"	Elm
48	104+65	326	15"	Hackberry
49	104+65	173	15"	Hackberry
50	104+65	326	15"	Hackberry
51	104+65	326	15"	Hackberry
52	104+65	326	15"	Hackberry
53	104+65	326	15"	Hackberry
54	104+65	326	15"	Hackberry
55	104+65	326	15"	Hackberry
56	104+65	326	15"	Hackberry
57	104+65	326	15"	Hackberry
58	104+65	326	15"	Hackberry
59	104+65	326	15"	Hackberry
60	104+65	326	15"	Hackberry
61	104+65	326	15"	Hackberry
62	104+65	326	15"	Hackberry
63	104+65	326	15"	Hackberry
64	104+65	326	15"	Hackberry
65	104+65	326	15"	Hackberry
66	104+65	326	15"	Hackberry
67	104+65	326	15"	Hackberry
68	104+65	326	15"	Hackberry
69	104+65	326	15"	Hackberry
70	104+65	326	15"	Hackberry
71	104+65	326	15"	Hackberry
72	104+65	326	15"	Hackberry
73	104+65	326	15"	Hackberry
74	104+65	326	15"	Hackberry
75	104+65	326	15"	Hackberry
76	104+65	326	15"	Hackberry
77	104+65	326	15"	Hackberry
78	104+65	326	15"	Hackberry
79	104+65	326	15"	Hackberry
80	104+65	326	15"	Hackberry
81	104+65	326	15"	Hackberry
82	104+65	326	15"	Hackberry
83	104+65	326	15"	Hackberry
84	104+65	326	15"	Hackberry
85	104+65	326	15"	Hackberry
86	104+65	326	15"	Hackberry
87	104+65	326	15"	Hackberry
88	104+65	326	15"	Hackberry
89	104+65	326	15"	Hackberry
90	104+65	326	15"	Hackberry
91	104+65	326	15"	Hackberry
92	104+65	326	15"	Hackberry
93	104+65	326	15"	Hackberry
94	104+65	326	15"	Hackberry
95	104+65	326	15"	Hackberry
96	104+65	326	15"	Hackberry
97	104+65	326	15"	Hackberry
98	104+65	326	15"	Hackberry
99	104+65	326	15"	Hackberry
100	104+65	326	15"	Hackberry

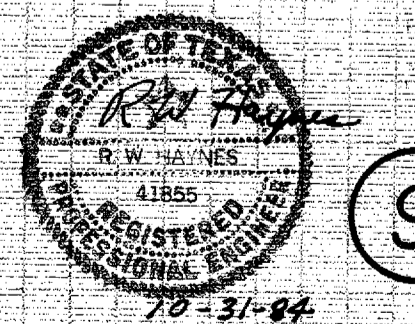
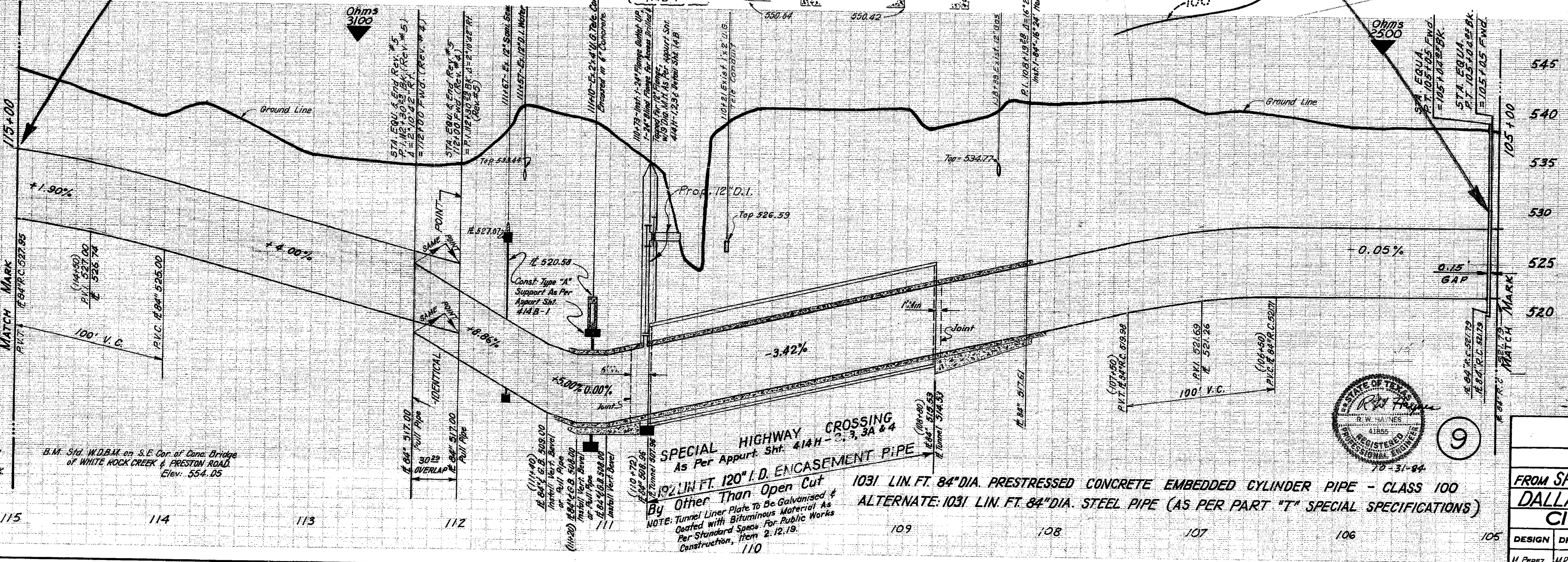
A.S.C. Versailles-Dallas Inc.
30' Easmt. For Maintaining Water Main or
Utility Or Appurtenances
Inst. No. 8174
Vol. Pg. Date:



NOTE:
For information on additional
surveys plotted on this line,
See 685W-660B folder in Water
Design Files.

STATE DEPARTMENT OF HIGHWAYS
& PUBLIC TRANSPORTATION APPROVAL
For an 84" Water Main Within the R.O.W. of
Preston Road State Highway 289.
Contractor to be Contacted: James Simmons
Telephone (214) 235-3124 at least 48
Hours Prior to Starting Construction in
Order that they may have a Representative
Present.
Date: July 17, 1984. Expiration Date:
January 17, 1985. Permit # 704078
Control 31 Section 6.

TREE LEGEND
Trees Saved or Removed Along 60' Restricted
Clearing Area. Sta. 105+00 to 108+10'
Removed - X Saved - Δ
No. 1-24" Oak
No. 2-8" Elm
No. 3-20" Oak
No. 4-12" Elm
No. 5-20" Elm
No. 6-24" Ash
No. 7-10" Elm
No. 8-10" Elm
No. 9-24" Ash
No. 10-11 Elm-Some Tree 36" Oak
No. 11-24" Elm
No. 12-24" Ash
No. 13-20" Elm
No. 14-20" Elm
No. 15-20" Elm
No. 16-20" Elm
No. 17-20" Elm
No. 18-20" Elm
No. 19-20" Elm
No. 20-20" Elm
No. 21-20" Elm
No. 22-20" Elm
No. 23-20" Elm
No. 24-20" Elm
No. 25-20" Elm
No. 26-20" Elm
No. 27-20" Elm
No. 28-20" Elm
No. 29-20" Elm
No. 30-20" Elm
No. 31-20" Elm
No. 32-20" Elm
No. 33-20" Elm
No. 34-20" Elm
No. 35-20" Elm
No. 36-20" Elm
No. 37-20" Elm
No. 38-20" Elm
No. 39-20" Elm
No. 40-20" Elm



84" R.C. WATER MAIN
IN CELESTIAL ROAD
FROM SPRING VALLEY TO DALLAS N. PKWY.
DALLAS WATER UTILITIES DEPT.
CITY OF DALLAS, TEXAS

DESIGN	DRAWN	DATE	SCALE	NOTES	FILE	NO.
M. Perez	M. Ridgway	Feb. 1984	H: 1" = 40' V: 1" = 5'		685W-660B	

W.A.# 7WA 212