

TREE LIST

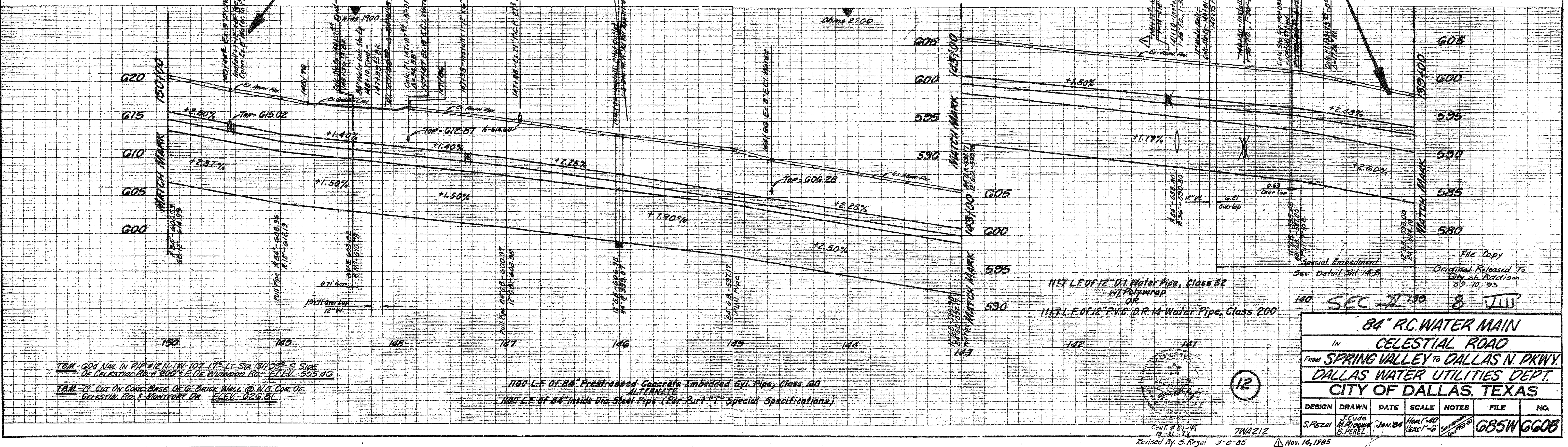
No.	Sta.	Lt.	Rt.	Spec.	Description
83	140750	88	0'	6"	Hickberry
84	140750	145	0'	6"	Pine Oak
85	140750	152	0'	6"	Pine Oak
86	140750	172	0'	6"	Pine Oak
87	140750	182	0'	6"	Pine Oak
88	140750	182	0'	6"	Hickberry
89	140750	182	0'	6"	Hickberry
90	140750	182	0'	6"	Hickberry
91	140750	182	0'	6"	Hickberry
92	140750	182	0'	6"	Hickberry
93	140750	182	0'	6"	Hickberry
94	140750	182	0'	6"	Hickberry
95	140750	182	0'	6"	Hickberry
96	140750	182	0'	6"	Hickberry
97	140750	182	0'	6"	Hickberry
98	140750	182	0'	6"	Hickberry
99	140750	182	0'	6"	Hickberry
100	140750	182	0'	6"	Hickberry
101	140750	182	0'	6"	Hickberry
102	140750	182	0'	6"	Hickberry
103	140750	182	0'	6"	Hickberry
104	140750	182	0'	6"	Hickberry
105	140750	182	0'	6"	Hickberry
106	140750	182	0'	6"	Hickberry
107	140750	182	0'	6"	Hickberry
108	140750	182	0'	6"	Hickberry
109	140750	182	0'	6"	Hickberry
110	140750	182	0'	6"	Hickberry
111	140750	182	0'	6"	Hickberry
112	140750	182	0'	6"	Hickberry
113	140750	182	0'	6"	Hickberry
114	140750	182	0'	6"	Hickberry
115	140750	182	0'	6"	Hickberry
116	140750	182	0'	6"	Hickberry
117	140750	182	0'	6"	Hickberry
118	140750	182	0'	6"	Hickberry
119	140750	182	0'	6"	Hickberry
120	140750	182	0'	6"	Hickberry

CONT. # 84-45
CITY OF ADDISON

NOTE!
 * Install:
 430 L.F. OF Temp. 2" Water Line Above The Ground,
 Prior To The Const. Of The 84" Water Main.
 * Conn. Ex. House Services To The Temp. Line.
 * #5505, #5510, #5434, Will Be Served From The
 2" Temp. Line During The Const. Time.
 * Cut & Plug Ex. 8" Water East Of Ex. Tee Station
 149+44.52.

JHY Corporation
 A Texas Corporation
 100' Temp. Working Space For The 84" Water Main
 From Sta. 143+20.1 To Sta. 149+57.5
 Abst. No. 157, S.H. 5102
 In The City Of Addison
 C.O.:
 Vol. 84112 Pg. 351 Date:

WATER MAP
 8 - 23 W
 SEWER KEY MAP
 F-2



84" R.C. WATER MAIN
 IN **CELESTIAL ROAD**
 FROM **SPRING VALLEY TO DALLAS N. PKWY.**
DALLAS WATER UTILITIES DEPT.
CITY OF DALLAS, TEXAS

DESIGN	DRAWN	DATE	SCALE	NOTES	FILE	NO.
S. PEREZ	M. PEREZ	JAN 28 1985	HORIZ. 1"=40'	VERT. 1"=4'	885W	6608

8 JUL 1985