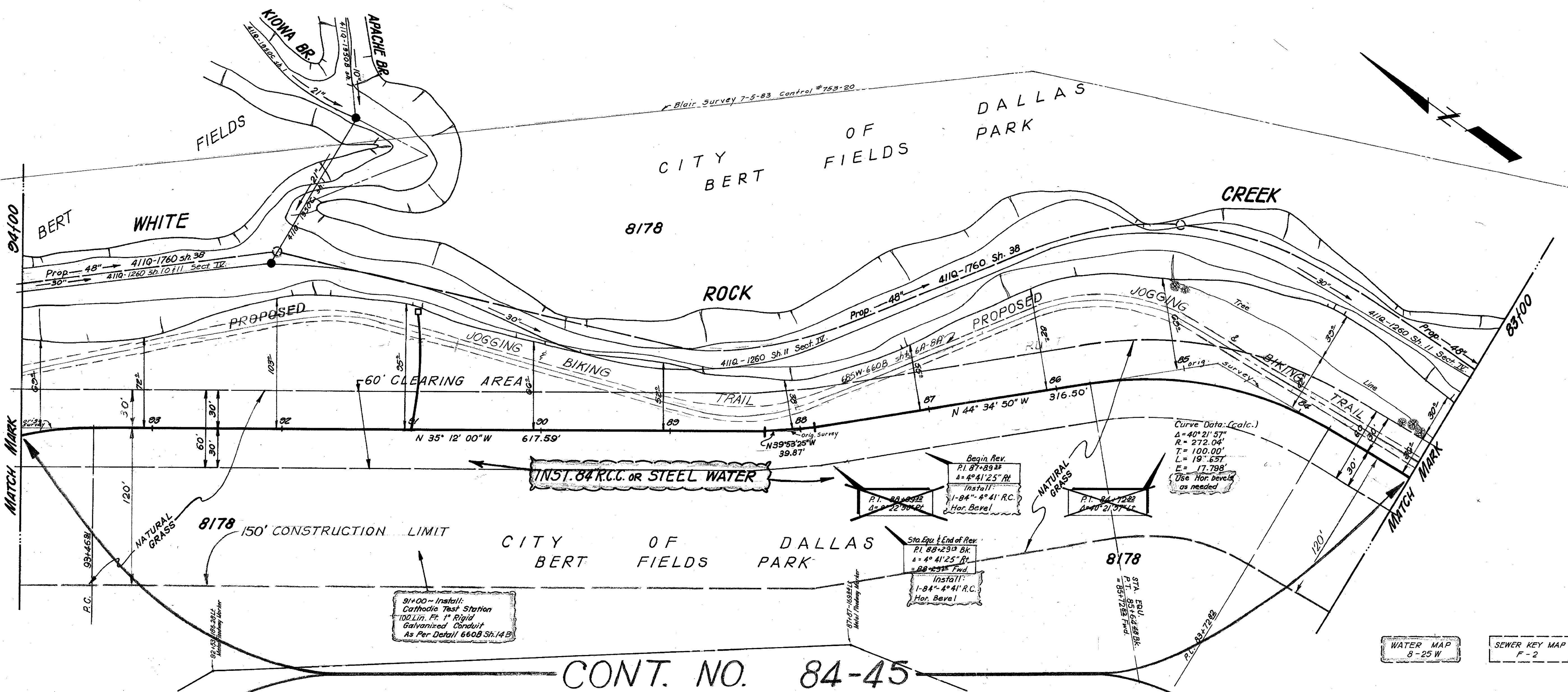


Note: Contractor shall restore ground to the original elevation and condition under trees where embankment and spoil have been stockpiled. Extreme care shall be taken to avoid damage to trees. See Detail Sheet 685W-660B Sh. 14B

Upon completion of work, the construction area shall be prepared and seeded in accordance with the Special Specifications and the Plan-Profile Sheets. See Detail Sheet 685W-660B Sheet 14B

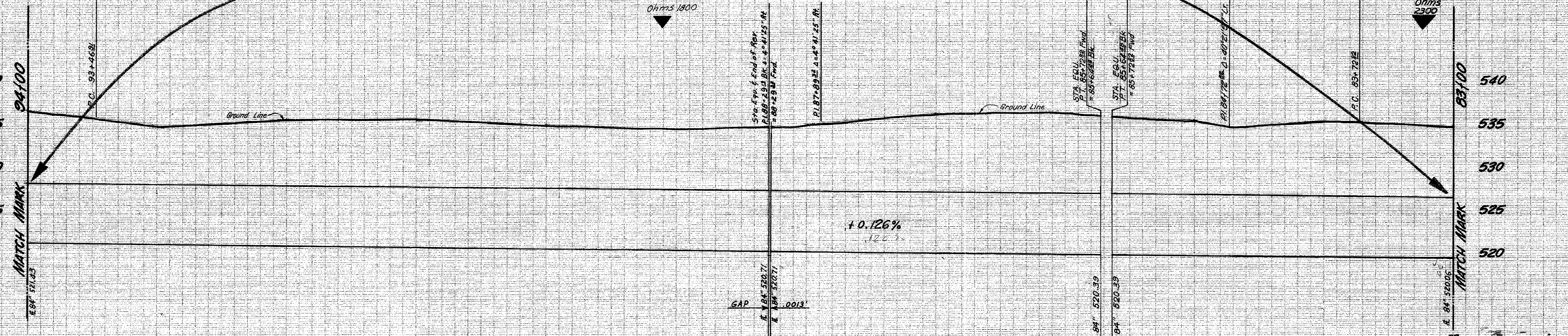
It is the intent of Dallas Water Utilities to minimize damage to trees in Park area and private properties. The Contractor shall take extreme care when working near trees designated to be saved. Excavation and fill shall be kept to a minimum. Upon notification from the Construction Engineer, Contractor shall remove all materials and restore the area to its original condition. See Detail Sheet 685W-660B Sheet 14B

Install 1 x 1 No. 2 Yellow Pine posts 3'-4" above ground at a minimum of 15' on center along both sides of the construction area with red-orange fluorescent flagging (1" minimum width) as directed by the construction engineer. See Detail Sheet 685W-660B Sheet 14B.



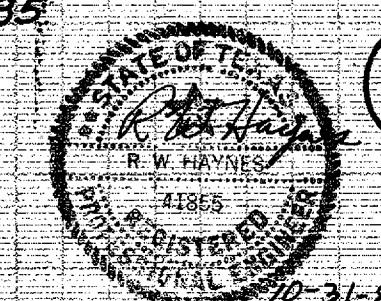
CONT. NO. 84-45

WATER MAP 8-25 W
SEWER KEY MAP F-2



1092 LIN. FT. 84" DIA. PRESTRESSED CONC. EMBEDDED CYLINDER PIPE - CLASS 100
ALTERNATE: 1092 LIN. FT. 84" DIA. STEEL PIPE (PER PART "T" SPECIAL SPECIFICATIONS)

B.M. 541.62 on top of Conc. Curb at E. Survey of City Spring Valley Rd. @ 453 E. E. End of Bridge over WHITE ROCK CREEK. Elev. 549.04
B.M. 534 W.D.B.M. on S.E. Cor. of Conc. Bridge at WHITE ROCK CREEK & PRESTON ROAD. Elev. 534.05
T.B.M. Top I.R. @ Sta. 115+54.38 of Original Survey. Elev. 541.62



84" R. C. WATER MAIN						
IN CELESTIAL ROAD						
FROM SPRING VALLEY TO DALLAS N. PKWY.						
DALLAS WATER UTILITIES DEPT.						
CITY OF DALLAS, TEXAS						
DESIGN	DRAWN	DATE	SCALE	NOTES	FILE	NO.
M. Perez	M. Ridway K. Reeves	Feb. 1984	Hor. 1"=40' Vert. 1"=6'	SUPPLEMENTAL CONTRACT	685W	660B