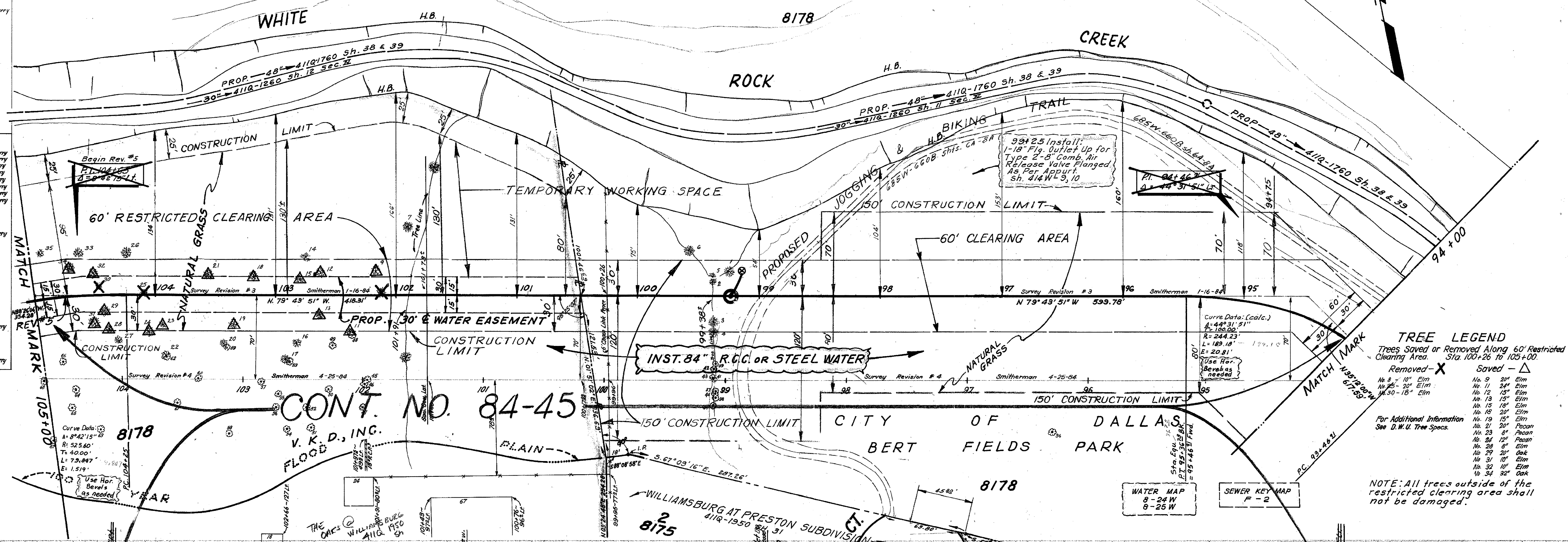


Sta.	Lt.	Rt.	Size	Description	
1	99+25	201	6"	Hackberry	
2	99+37	119	8"	Hackberry	
3	99+37	291	8"	Hackberry	
4	99+37	291	8"	Hackberry	
5	99+37	291	8"	Hackberry	
6	99+35	988	12"	Hackberry	
7	101+31	580	20"	Oak	
8	101+31	21	20"	Elm	
9	102+16	20	20"	Elm	
10	102+38	31	24"	Elm	
11	102+38	31	17"	15"	Elm
12	102+64	16	31"	18"	Elm
13	102+64	16	31"	18"	Elm
14	102+64	16	31"	18"	Elm
15	102+79	15	18"	Elm	
16	102+80	40	10"	Hackberry	
17	102+91	53	10"	Elm	
18	103+18	16	20"	Elm	
19	103+36	24	15"	Elm	
20	103+36	24	15"	Elm	
21	103+56	17	20"	Pecan	
22	103+56	17	20"	Pecan	
23	103+56	17	20"	Pecan	
24	104+04	30	12"	Pecan	
25	104+09	1	20"	Elm	
26	104+23	34	8"	Elm	
27	104+30	38	20"	Elm	
28	104+38	28	8"	Elm	
29	104+45	13	18"	Elm	
30	104+45	13	18"	Elm	
31	104+50	24	10"	Elm	
32	104+51	17	15"	Elm	
33	104+63	33	32"	Oak	
34	104+72	21	32"	Oak	
35	104+72	21	32"	Oak	
36	104+72	21	32"	Oak	
37	104+72	21	32"	Oak	
38	104+72	21	32"	Oak	
39	104+72	21	32"	Oak	
40	104+72	21	32"	Oak	
41	104+72	21	32"	Oak	
42	104+72	21	32"	Oak	
43	104+72	21	32"	Oak	
44	104+72	21	32"	Oak	
45	104+72	21	32"	Oak	
46	104+72	21	32"	Oak	
47	104+72	21	32"	Oak	
48	104+72	21	32"	Oak	
49	104+72	21	32"	Oak	
50	104+72	21	32"	Oak	
51	104+72	21	32"	Oak	
52	104+72	21	32"	Oak	
53	104+72	21	32"	Oak	
54	104+72	21	32"	Oak	
55	104+72	21	32"	Oak	
56	104+72	21	32"	Oak	
57	104+72	21	32"	Oak	
58	104+72	21	32"	Oak	
59	104+72	21	32"	Oak	
60	104+72	21	32"	Oak	
61	104+72	21	32"	Oak	
62	104+72	21	32"	Oak	
63	104+72	21	32"	Oak	
64	104+72	21	32"	Oak	
65	104+72	21	32"	Oak	
66	104+72	21	32"	Oak	
67	104+72	21	32"	Oak	
68	104+72	21	32"	Oak	
69	104+72	21	32"	Oak	
70	104+72	21	32"	Oak	
71	104+72	21	32"	Oak	
72	104+72	21	32"	Oak	
73	104+72	21	32"	Oak	
74	104+72	21	32"	Oak	
75	104+72	21	32"	Oak	
76	104+72	21	32"	Oak	
77	104+72	21	32"	Oak	
78	104+72	21	32"	Oak	
79	104+72	21	32"	Oak	
80	104+72	21	32"	Oak	
81	104+72	21	32"	Oak	
82	104+72	21	32"	Oak	
83	104+72	21	32"	Oak	
84	104+72	21	32"	Oak	
85	104+72	21	32"	Oak	
86	104+72	21	32"	Oak	
87	104+72	21	32"	Oak	
88	104+72	21	32"	Oak	
89	104+72	21	32"	Oak	
90	104+72	21	32"	Oak	
91	104+72	21	32"	Oak	
92	104+72	21	32"	Oak	
93	104+72	21	32"	Oak	
94	104+72	21	32"	Oak	
95	104+72	21	32"	Oak	
96	104+72	21	32"	Oak	
97	104+72	21	32"	Oak	
98	104+72	21	32"	Oak	
99	104+72	21	32"	Oak	
100	104+72	21	32"	Oak	
101	104+72	21	32"	Oak	
102	104+72	21	32"	Oak	
103	104+72	21	32"	Oak	
104	104+72	21	32"	Oak	
105	104+72	21	32"	Oak	

V.K.D., Inc. August 28, 1984  
 30' Easement For A 36" Water Main  
 From Sta. 100+46.59 To Sta. 104+36.12  
 Block 8178.  
 Temporary Working Space Granted  
 O.O. Vol. Pg. Date:

Blair Survey 7-5-83 Control # 753-20

CITY OF DALLAS  
 BERT FIELDS PARK



**TREE LEGEND**

Trees Saved or Removed Along 60' Restricted Clearing Area. Sta. 100+26 to 105+00.

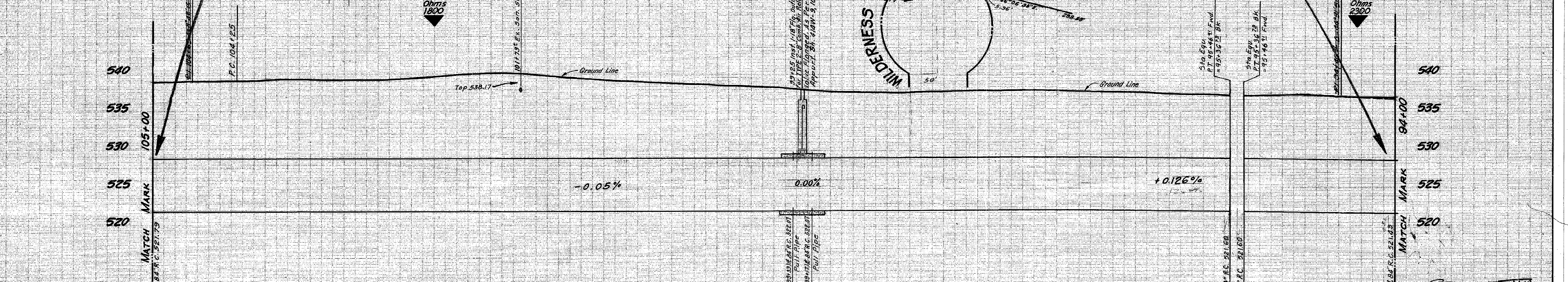
Removed - X	Saved - Δ
No. 8 - 10' Elm	No. 9 - 20' Elm
No. 11 - 24' Elm	No. 11 - 24' Elm
No. 12 - 15' Elm	No. 12 - 15' Elm
No. 13 - 15' Elm	No. 13 - 15' Elm
No. 15 - 18' Elm	No. 15 - 18' Elm
No. 16 - 20' Elm	No. 16 - 20' Elm
No. 19 - 15' Elm	No. 19 - 15' Elm
No. 21 - 20' Pecan	No. 21 - 20' Pecan
No. 23 - 8' Pecan	No. 23 - 8' Pecan
No. 24 - 12' Pecan	No. 24 - 12' Pecan
No. 28 - 8' Elm	No. 28 - 8' Elm
No. 29 - 20' Oak	No. 29 - 20' Oak
No. 31 - 10' Elm	No. 31 - 10' Elm
No. 32 - 10' Elm	No. 32 - 10' Elm
No. 34 - 32' Oak	No. 34 - 32' Oak

For Additional Information See D.W.U. Tree Specs.

NOTE: All trees outside of the restricted clearing area shall not be damaged.

CONT. NO. 84-45  
 V.K.D., INC.  
 FLOOD PLAIN

WATER MAP 8-24 W 8-25 W  
 SEWER KEY MAP F-2

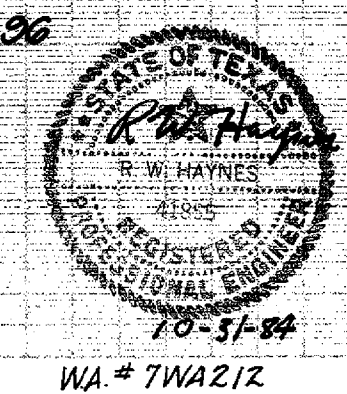


1090 LIN. FT. 84" DIA. PRESTRESSED CONC. EMBEDDED CYLINDER PIPE - CLASS 100  
 ALTERNATE: 1090 LIN. FT. 84" DIA. STEEL PIPE (AS PER PART "T" SPECIAL SPECIFICATIONS)

B.M. "X" Cut in Top Conc. Curb on S. Survey  
 N. Corner SPRING VALLEY RD on 105+00 E.L.  
 End of Bridge over WHITE ROCK CREEK  
 Elev. 549.04

B.M. Spd. 100.00 on S.E. Cor. of Corner Bridge  
 of WHITE ROCK CREEK & PRESTON ROAD  
 Elev. 554.05

T.B.M. Top I.R. of Sta. 115+94.85  
 of Original Survey  
 Elev. 541.62



8

84" R.C. WATER MAIN					
ALONG WHITE ROCK CREEK					
FROM SPRING VALLEY TO DALLAS N. PKWY.					
DALLAS WATER UTILITIES DEPT.					
CITY OF DALLAS, TEXAS					
DESIGN	DRAWN	DATE	SCALE	NOTES	FILE NO.
M. PAREZ	H. WATTS	JAN. '84	VERT. 1"=6'		685W660B