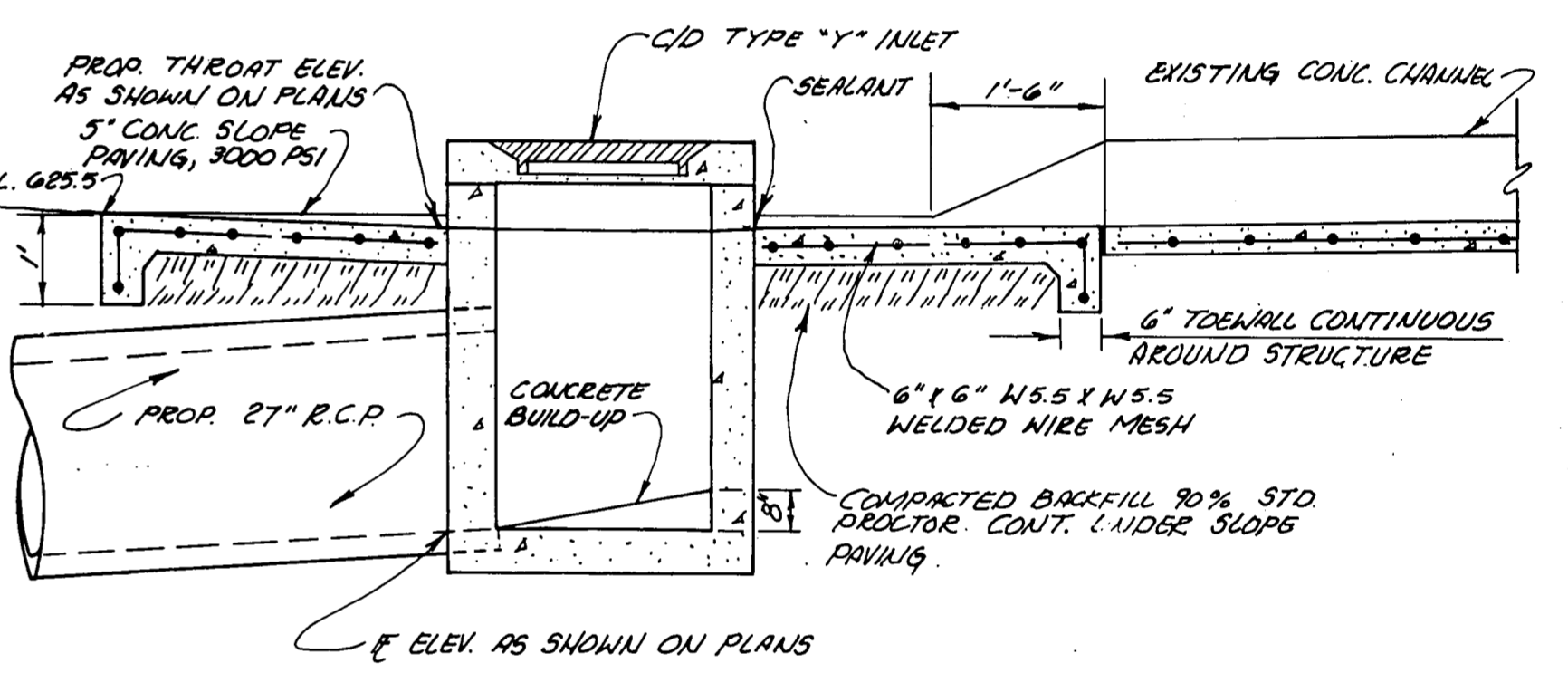
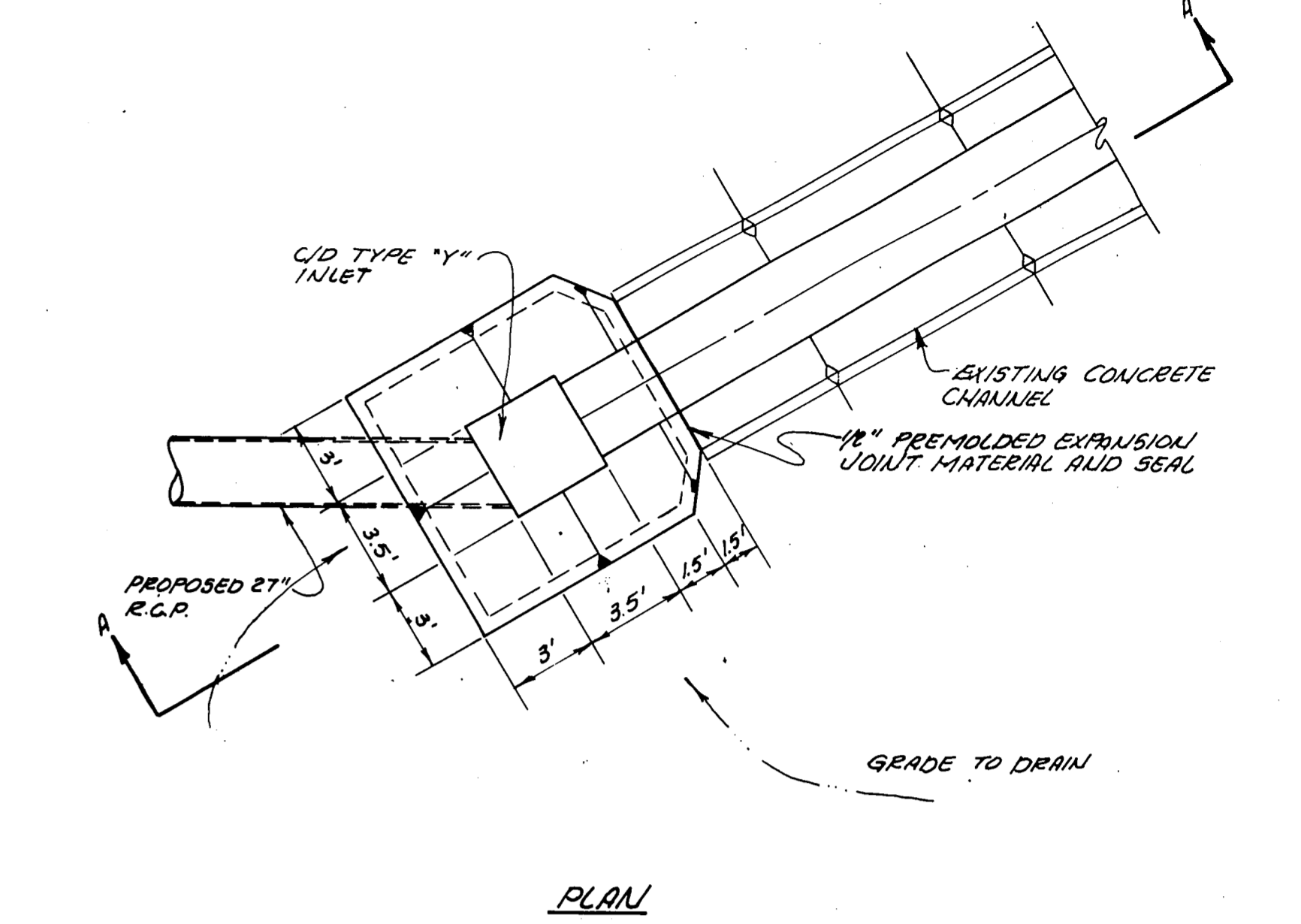
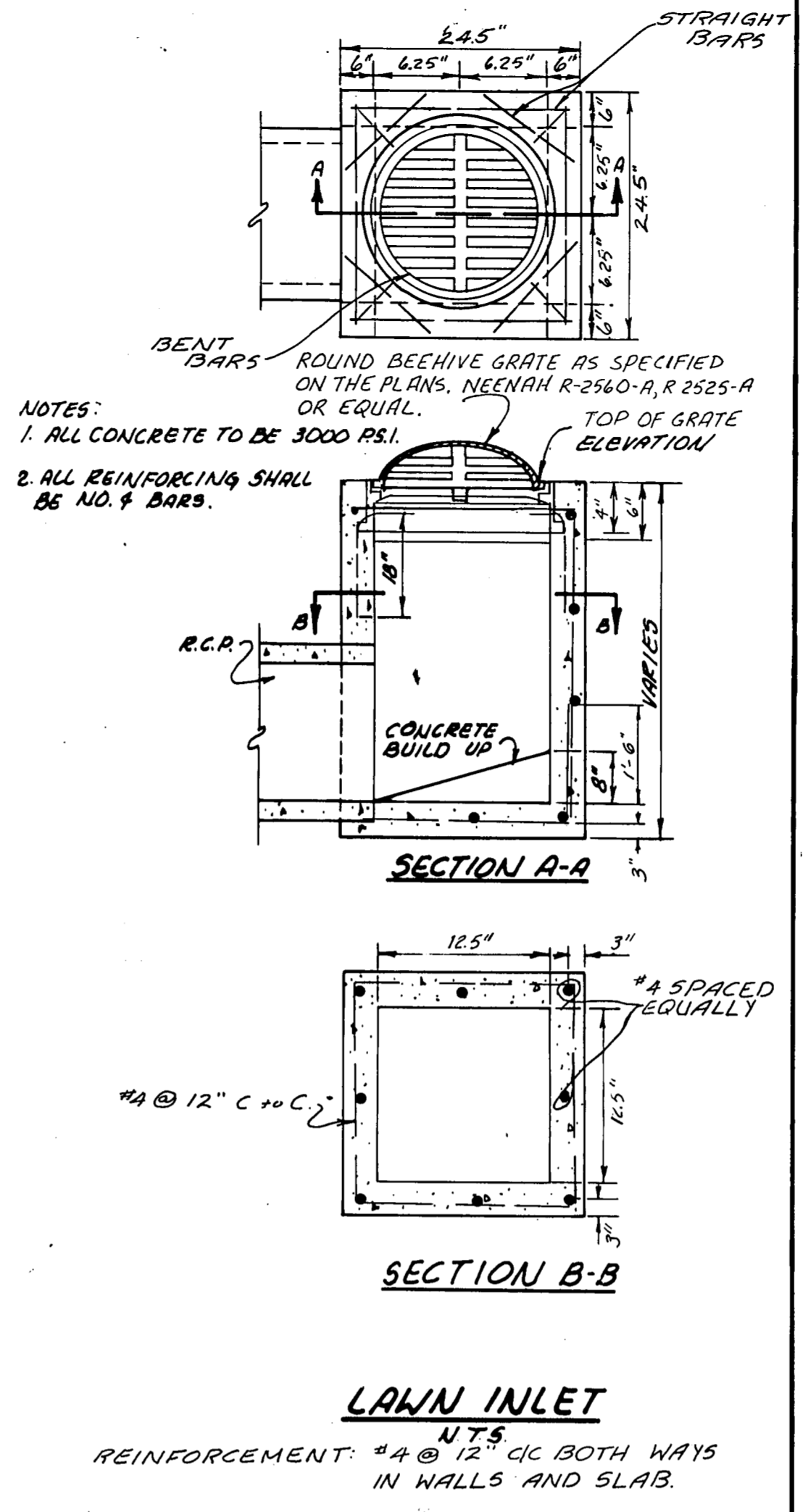
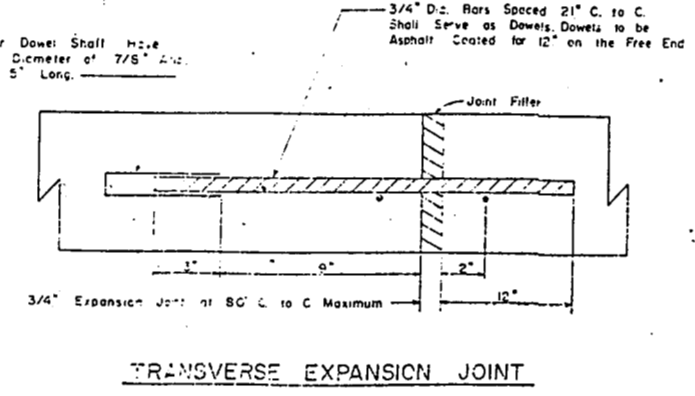
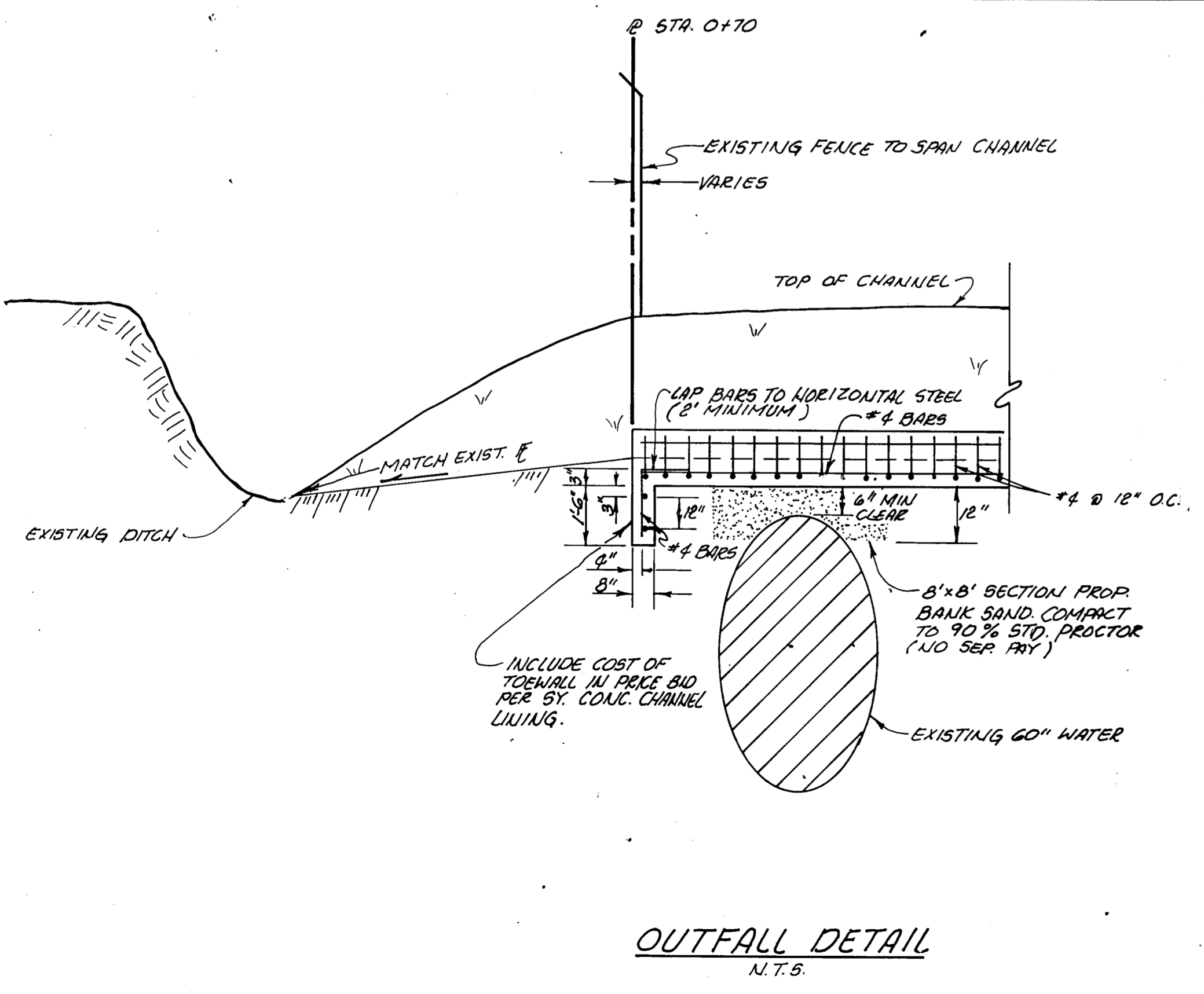


NOTES: ALL CONSTRUCTION TO CONFORM WITH CURRENT CITY OF DALLAS GENERAL SPECIFICATIONS.
CONSTRUCTION JOINT SHOWN FOR CONVENIENCE ONLY - MANUALLY CONSTRUCTION MAY BE USED.
ALL REINFORCING STEEL SHALL BE #4 AND SPACED 12" C. TO C. BOTH WAYS UNLESS OTHERWISE SPECIFIED.
CONCRETE SHALL HAVE A COMPRESSIVE STRENGTH OF 3000 P.S.I. AT 28 DAYS AND SHALL CONTAIN A MINIMUM OF 5 BAGS OF CEMENT PER CUBIC YARD.
SIDE SLOPES SHALL BE NO STEEPER THAN 3:1.

TYPICAL CHANNEL SECTION
N.T.S.



MODIFIED C/D TYPE "Y" INLET
N.T.S.



OUTFALL DETAIL
N.T.S.

CONSTRUCTION NOTES

- CONTRACTOR TO TAKE ALL NECESSARY PRECAUTIONS NOT TO DAMAGE EXISTING FACILITIES DURING CONSTRUCTION. ANY DAMAGES AS A RESULT OF CONSTRUCTION OPERATIONS WILL BE REPAIRED BY THE CONTRACTOR AT HIS OWN EXPENSE. (NO SEPARATE PAY)
- CONTRACTOR IS RESPONSIBLE FOR DAMAGES TO PROPERTY OUTSIDE THE PROPERTY BOUNDARY. ANY DAMAGES AS A RESULT OF CONSTRUCTION OPERATIONS WILL BE REPAIRED BY THE CONTRACTOR AT HIS OWN EXPENSE. (NO SEPARATE PAY)
- HORIZONTAL INLET DIMENSIONS REFERENCE FACE OF CURB.
- ALL STORM SEWER AND LATERALS TO BE 15T1, C-76, CLASS III REINFORCED PIPE UNLESS OTHERWISE INDICATED.
- INCLUDE PRICE OF ALL BEDDING IN PRICE BID PER LINEAR FOOT OF PIPE.
- CONTRACTOR TO VERIFY LOCATION AND ELEVATION OF EXISTING FACILITIES PRIOR TO CONSTRUCTION OF PROPOSED FACILITIES.
- CONTRACTOR TO NOTIFY THE APPROPRIATE UTILITY COMPANIES 48 HOURS PRIOR TO EXCAVATING NEAR THE EXISTING UTILITIES.
- ALL STD. C/D TYPE "Y" INLETS AS PER C/D STANDARD CONSTRUCTION DETAILS PG. 2001, 2004.
- ALL STD. C/D 6" RECESSED INLETS AS PER C/D STANDARD CONSTRUCTION DETAILS PG. 2001, 2004.
- REINFORCED CONCRETE CLASS III PIPE INSTALLATION AS PER C/D STANDARD CONSTRUCTION DETAILS PG. 2006.
- HYDRO-MULCH SEEDING TO BE APPLIED IN ACCORDANCE WITH STANDARD SPECIFICATIONS FOR PUBLIC WORKS CONSTRUCTION, NORTH TEXAS, LATEST EDITIONS AS FOLLOWS: ALL SEEDS MUST MEET THE REQUIREMENTS OF U.S. DEPARTMENT OF AGRICULTURE RULES AND REGULATIONS AS SET FORTH IN FEDERAL SEED ACT AND TEXAS SEED LAW. TYPE OF SEED, PURITY AND GERMINATION REQUIREMENTS, RATE OF APPLICATION, AND PLANTING DATES ARE AS FOLLOWS:

TYPE	APPLICATION RATE POUNDS PER ACRE	PLANTING DATE
A) HULLED COMMON BERMUDA GRASS 98/88	40	JAN. 1 TO APR. 15
UNHULLED COMMON BERMUDA GRASS 98/88	40	
ANNUAL RYE GRASS (GULF)	50	
B) HULLED COMMON BERMUDA GRASS 98/88	40	APR. 15 TO OCT. 1
C) HULLED COMMON BERMUDA GRASS 98/88	40	OCT. 1 TO JAN. 1
UNHULLED COMMON BERMUDA GRASS 98/88	40	
ANNUAL RYE GRASS (GULF)	30	

FERTILIZER: FERTILIZER TO BE WATER SOLUBLE WITH ANALYSIS OF 10 PERCENT NITROGEN, 20 PERCENT PHOSPHORIC ACID, AND 10 PERCENT POTASH. RATE OF APPLICATION TO BE 435 POUNDS PER ACRE.
MULCH: MULCH TO BE VIRGINIA WOOD CELLULOSE FIBER MADE FROM WHOLE WOOD CHIPS. WITHIN THE FIBER MULCH MATERIAL, AT LEAST 20 PERCENT OF THE FIBERS WILL BE 0.7" MIN. IN LENGTH AND 0.27" MIN. IN DIAMETER. RATE OF APPLICATION TO BE 2,000 POUNDS PER ACRE. SOIL STABILIZERS SUCH AS TERZO TYPE III (OR APPROVED EQUIV.) TO BE APPLIED AT A RATE OF 40 POUNDS PER ACRE ON SIDES SLOPES AND "TERRA TRAC 1" (OR APPROVED EQUIV.) TO BE APPLIED AT A RATE OF 40 POUNDS PER ACRE IN THE CENTER, UPPER PORTIONS OF CHANNEL AREAS.

12. SEE SHEETS 44B THRU 44D FOR STANDARD CITY OF DALLAS DRAINAGE DETAILS



BELTWOOD RESERVOIR EXPANSION
CONSTRUCTION NOTES AND MISC. DETAILS
DALLAS WATER UTILITIES
CITY OF DALLAS, TEXAS
TurnerCollie & Braden Inc.

DESIGN	C.P.A.	CONTRACT NO.	89-79	SHEET NO.	4
DRAWN	C.A.	FILE NO.	630 Q 700 F		
CHECKED					
DATE	5/89				OF 44