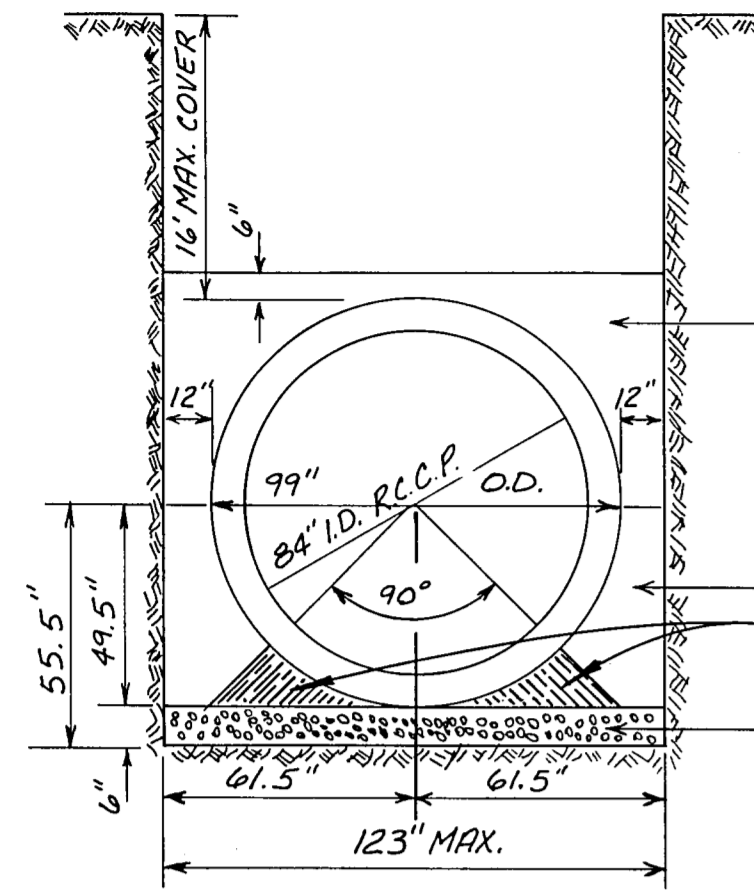


NOTE:

COMPACT THE MATERIAL UNDER THE CRITICAL HAUNCH AREA TO 90% DRY PROCTOR DENSITY



SELECT BACKFILL SALVAGED FROM TRENCH EXCAVATION MUST BE CLEAN AND FREE OF LARGE ROCKS. IT MUST BE APPROVED BY THE ENGINEER AND STOCKPILED FOR USE WHEN NEEDED. IF ACCEPTABLE MATERIAL IS NOT AVAILABLE, SAND WILL BE REQUIRED.

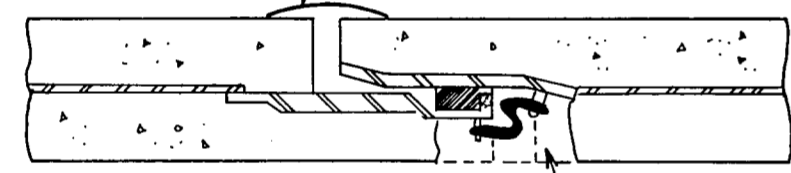
GRANULAR MATERIAL  
SEE NOTE ABOVE

EMBEDMENT MATERIAL  
CRUSHED ROCK  
GRADATION 0 RETAINED ON 1/4"  
95% - 100% RETAINED  
ON NO. 10

**SPECIAL EMBEDMENT FOR 84" R.C.C.P. WATER LINE**

N.T.S.

PLACE CEMENT MORTAR

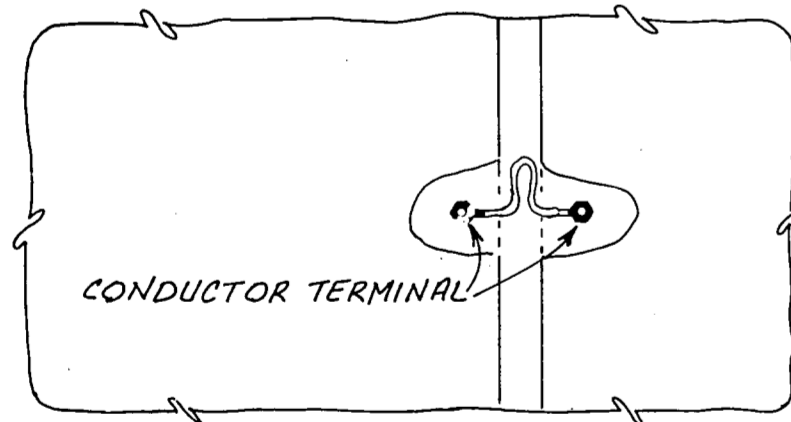


REMOVE MORTAR & DISCONNECT COPPER CONDUCTOR WIRE AT TERMINAL DURING SALVAGE OPERATION REINSTALL AS PER DETAIL REPLACING MORTAR DURING INSTALLATION.

12" LENGTH OF #4 A.W.G. BARE STRANDED COPPER LEAD TO CONNECTOR.

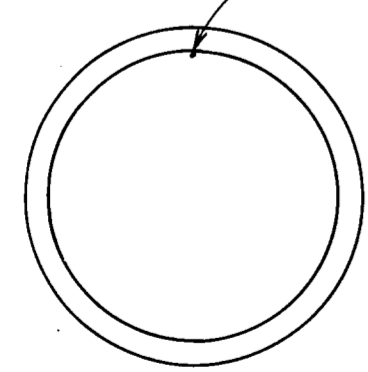
**BONDED JOINT DETAIL**

SIDE VIEW  
N.T.S.



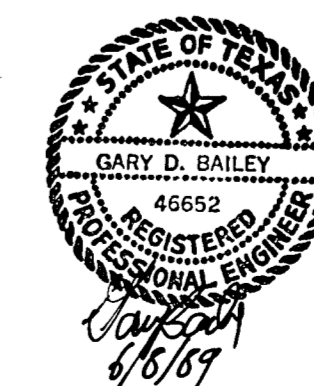
CONDUCTOR TERMINAL

PLACE CONDUCTOR INSIDE AND ALONG C OF PIPE



**BONDED JOINT DETAIL**

END VIEW  
N.T.S.



NO.	DATE	REVISION	APPROVED
BELTWOOD RESERVOIR EXPANSION			
<b>YARD PIPING DETAILS</b>			
DALLAS WATER UTILITIES CITY OF DALLAS, TEXAS			
TurnerCollie & Braden Inc.			
DESIGN	BCR	CONTRACT NO.	89-79
DRAWN	C.A.	FILE NO.	630 Q 700 F
TRACED			
CHECKED			
DATE	5/89		
		SHEET NO.	11
		OF	44