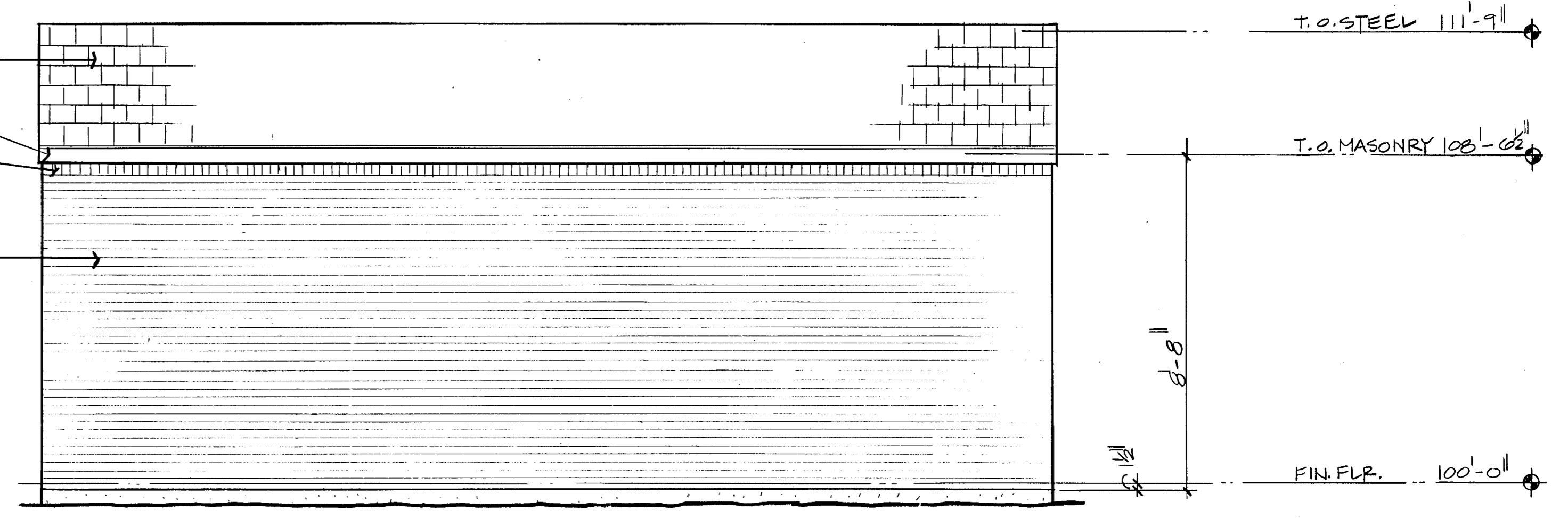


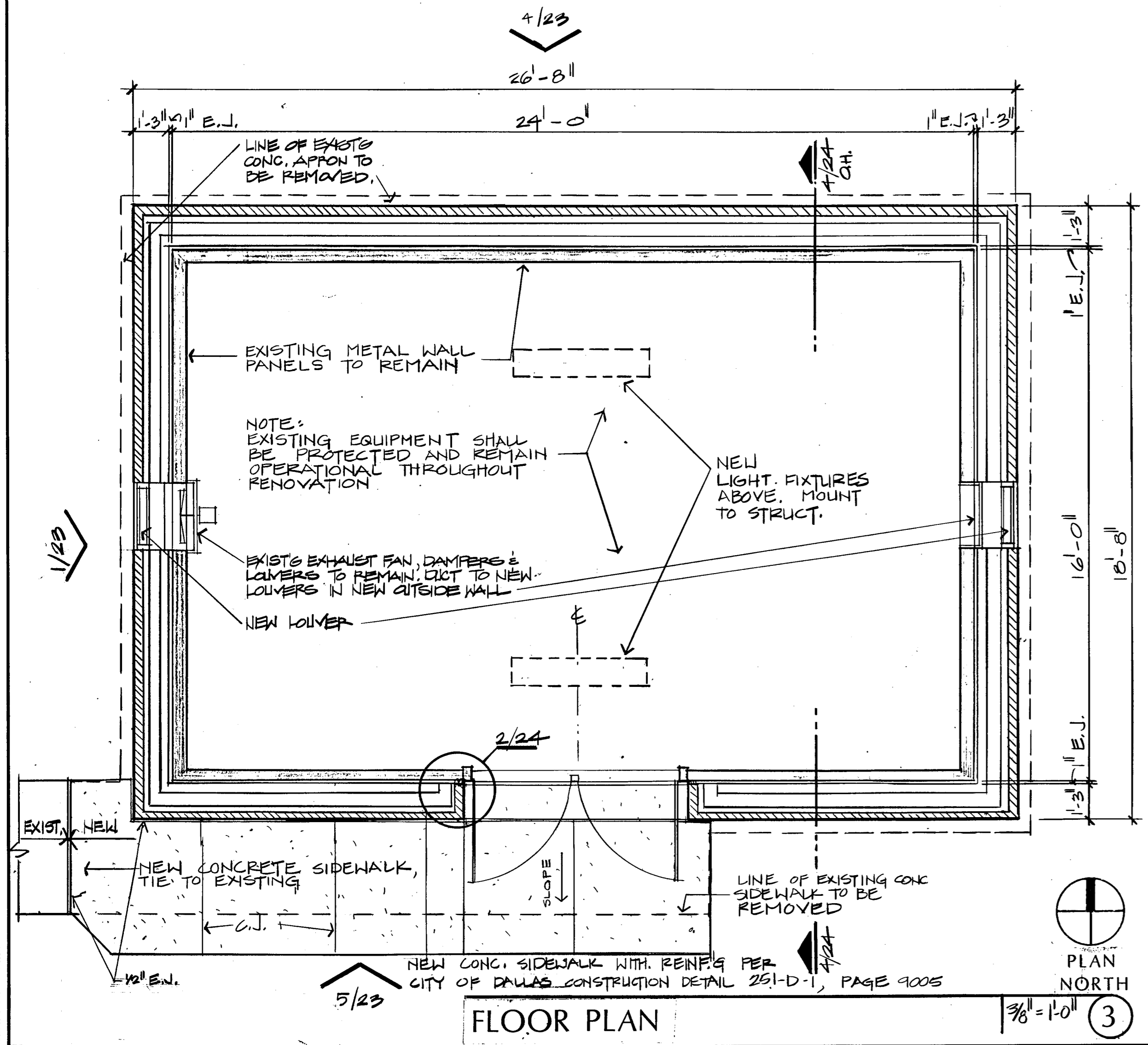
SOUTH ELEVATION

3/8" = 1'-0" (5)



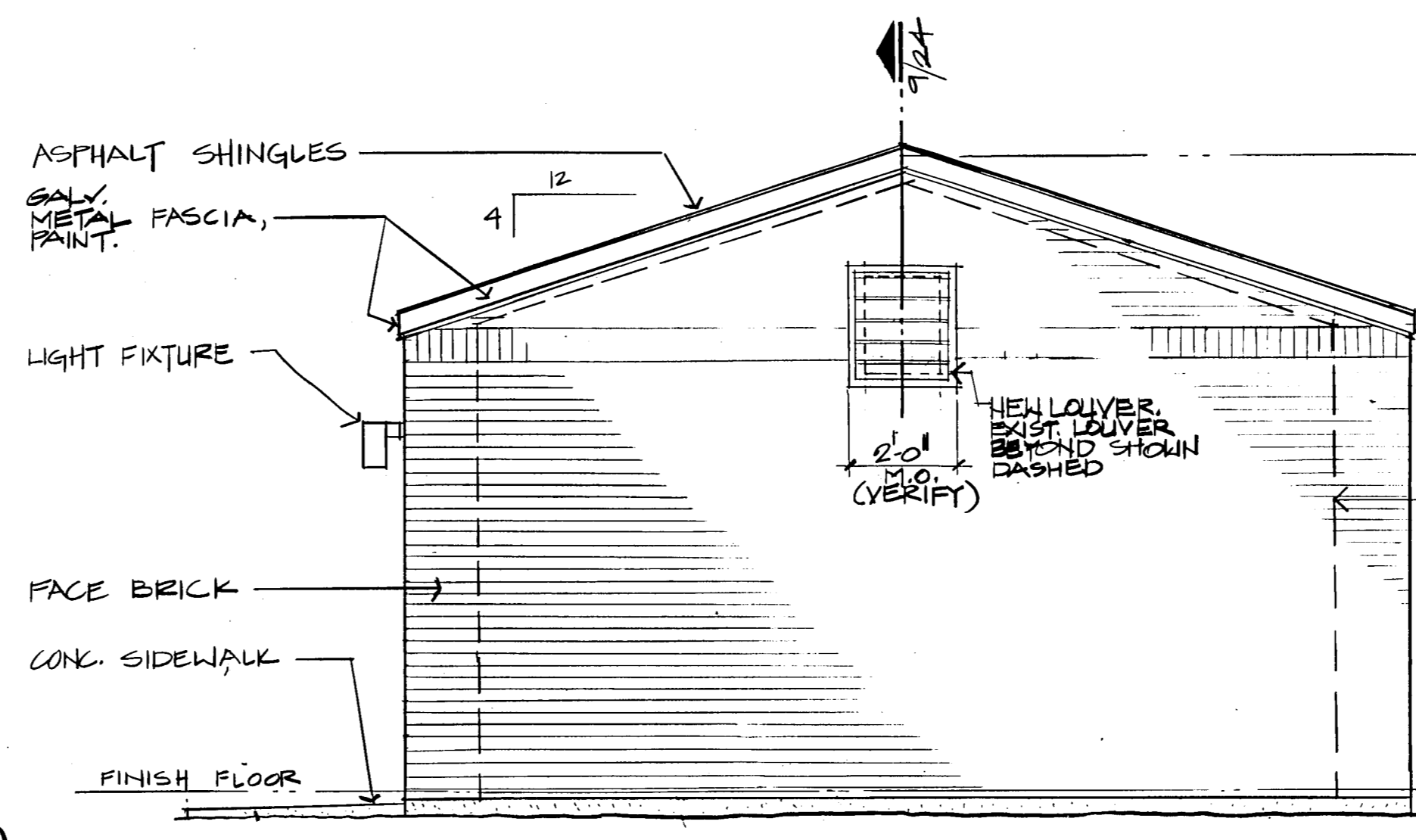
NORTH ELEVATION

3/8" = 1'-0" (4)



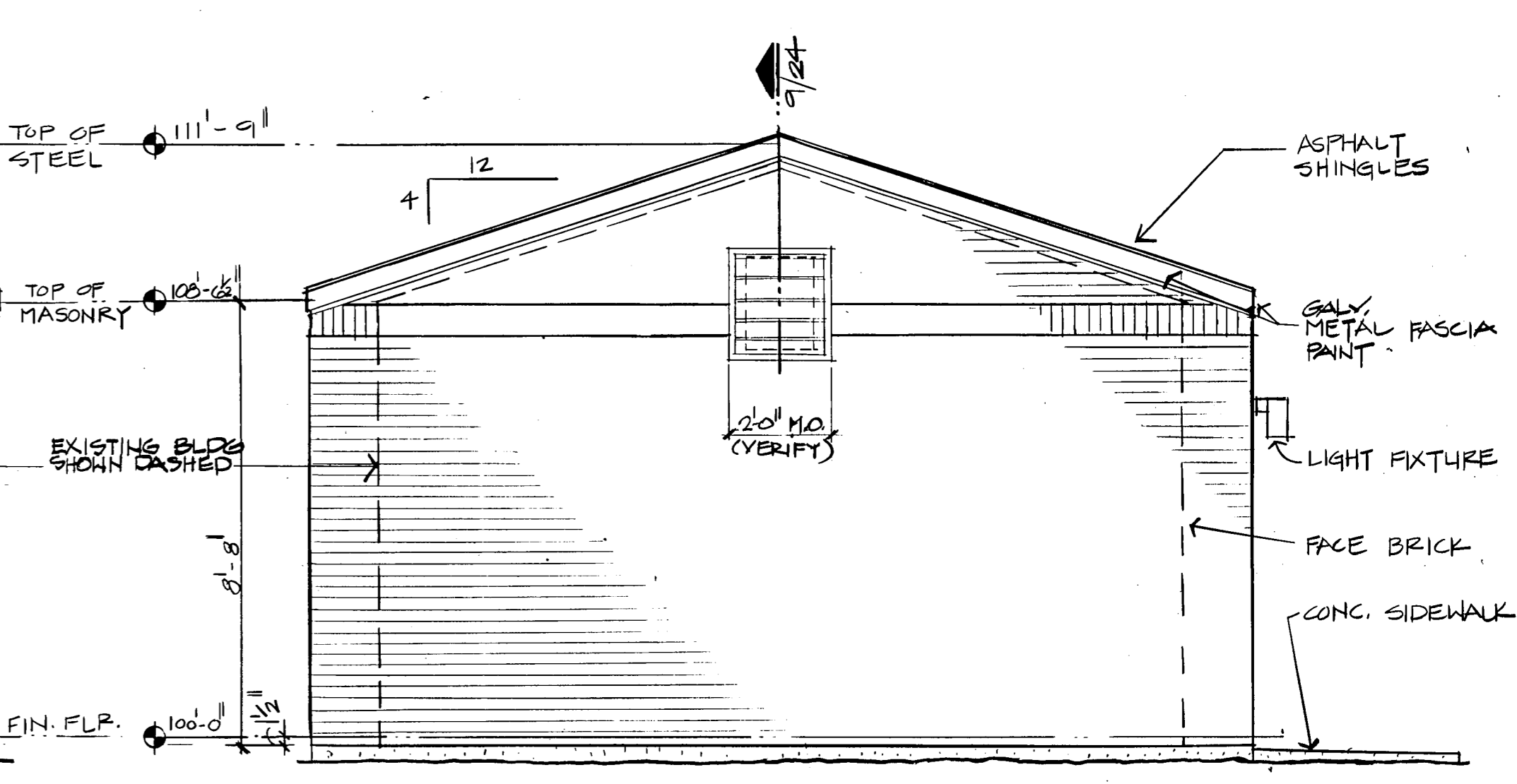
FLOOR PLAN

3/8" = 1'-0" (3)



EAST ELEVATION

3/8" = 1'-0" (2)



WEST ELEVATION

3/8" = 1'-0" (1)



THE OFFICE OF  
PIERCE  
GOODWIN  
ALEXANDER  
& LINVILLE

BELTWOOD RESERVOIR EXPANSION	
ELECTRICAL SWITCHGEAR HOUSE	
FLOOR PLAN & ELEVATIONS	
DALLAS WATER UTILITIES	
CITY OF DALLAS, TEXAS	
Turner Collie & Braden Inc.	
DESIGN	CONTRACT NO. 89-79
DRAWN	FILE NO. 630 Q 700 F
TRACED	SHEET NO. 23
CHECKED	OF 44
DATE	

NO.	DATE	REVISION	APPROVED