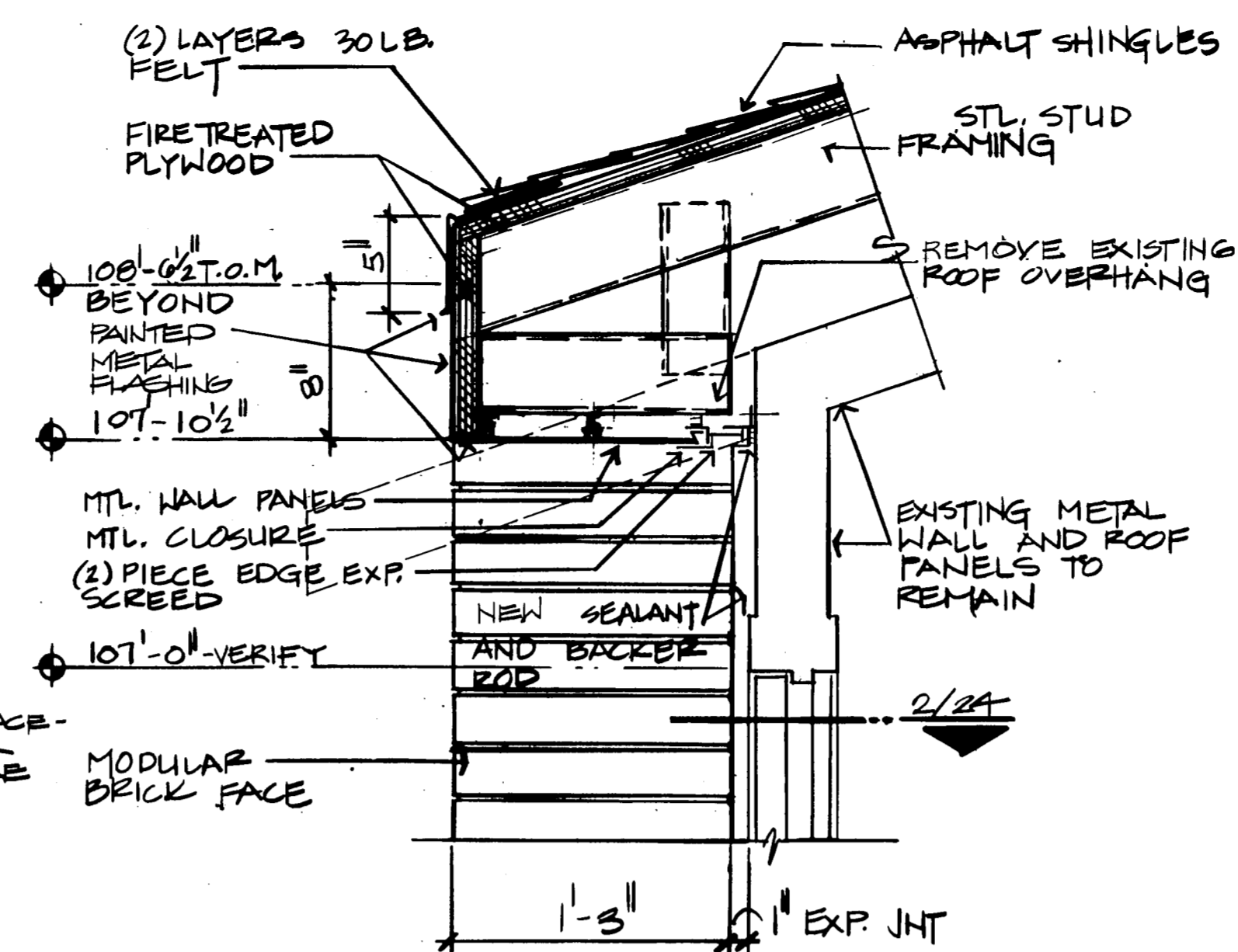
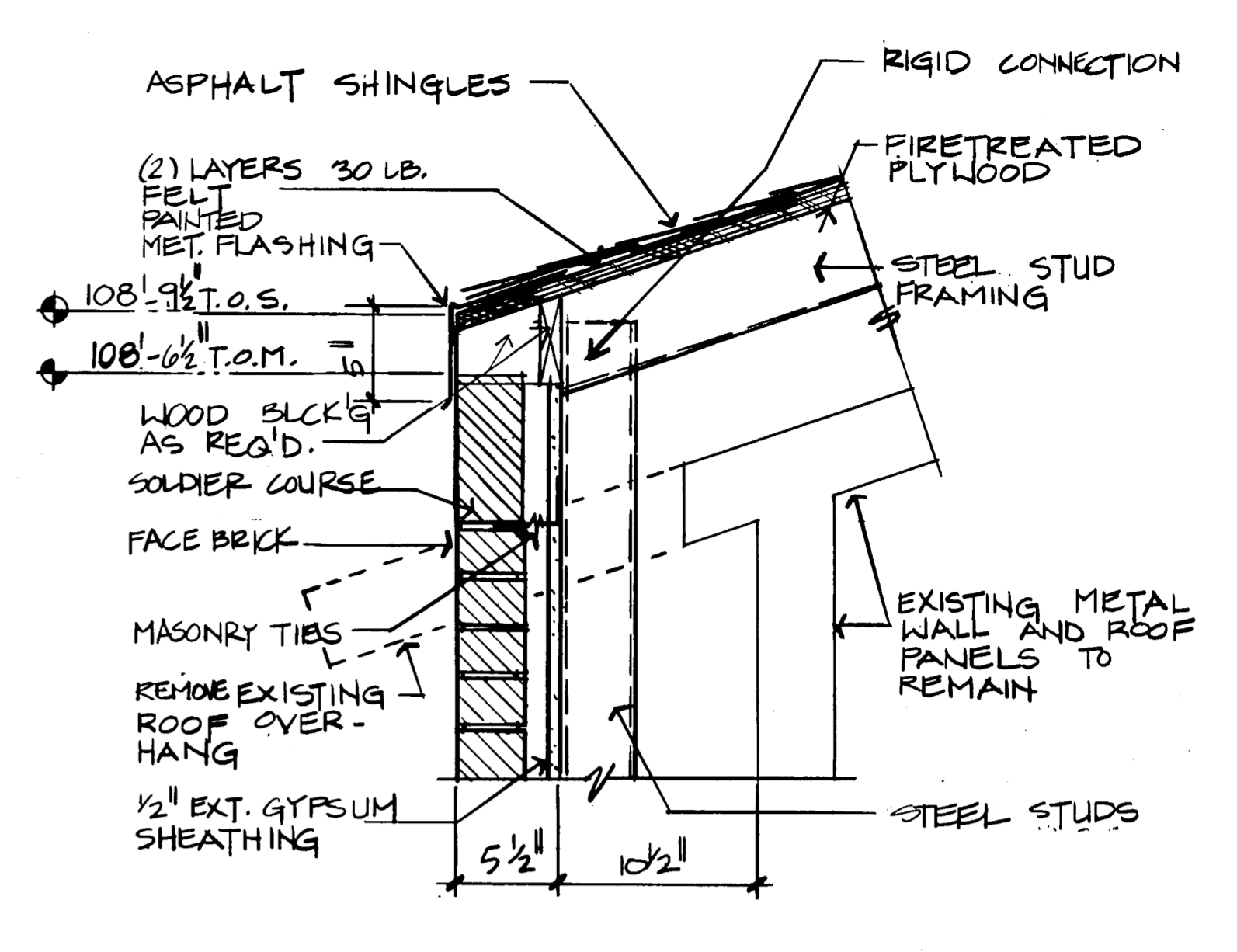


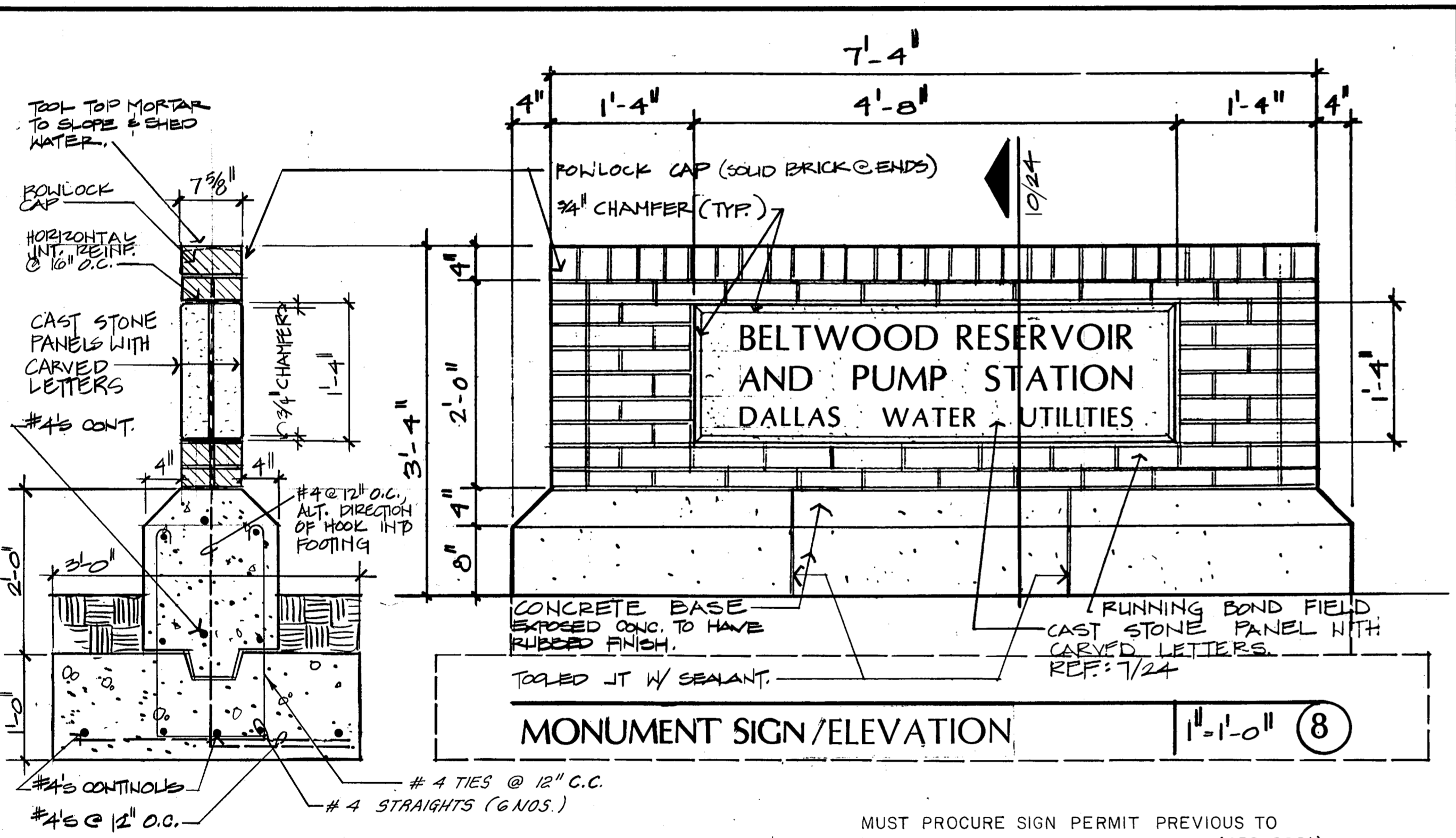
LOUVER DETAIL | 1/2" = 1'-0" | 9



SOFFIT/HEAD DETAIL | 1/2" = 1'-0" | 6

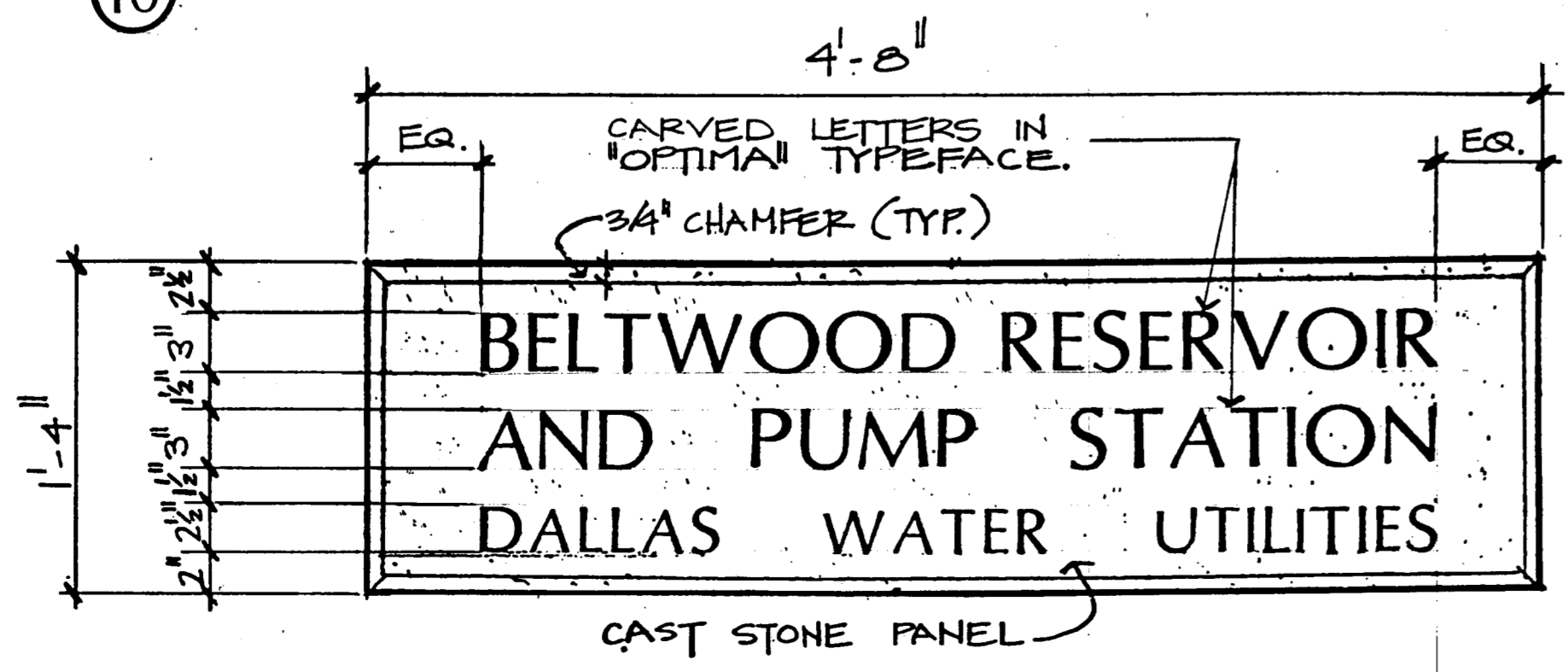


FASCIA DETAIL | 1/2" = 1'-0" | 3

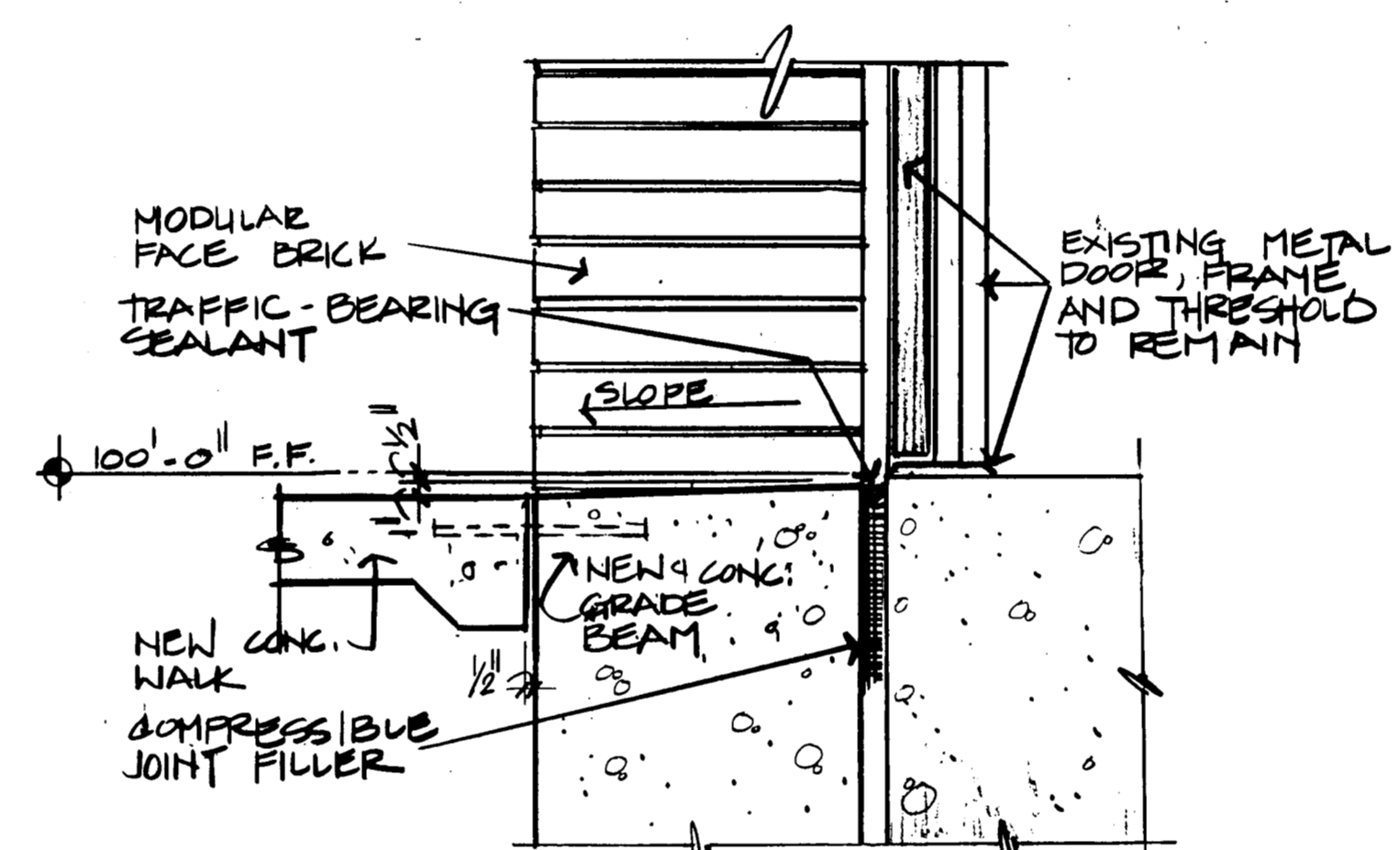


MONUMENT SIGN/ELEVATION | 1" = 1'-0" | 8

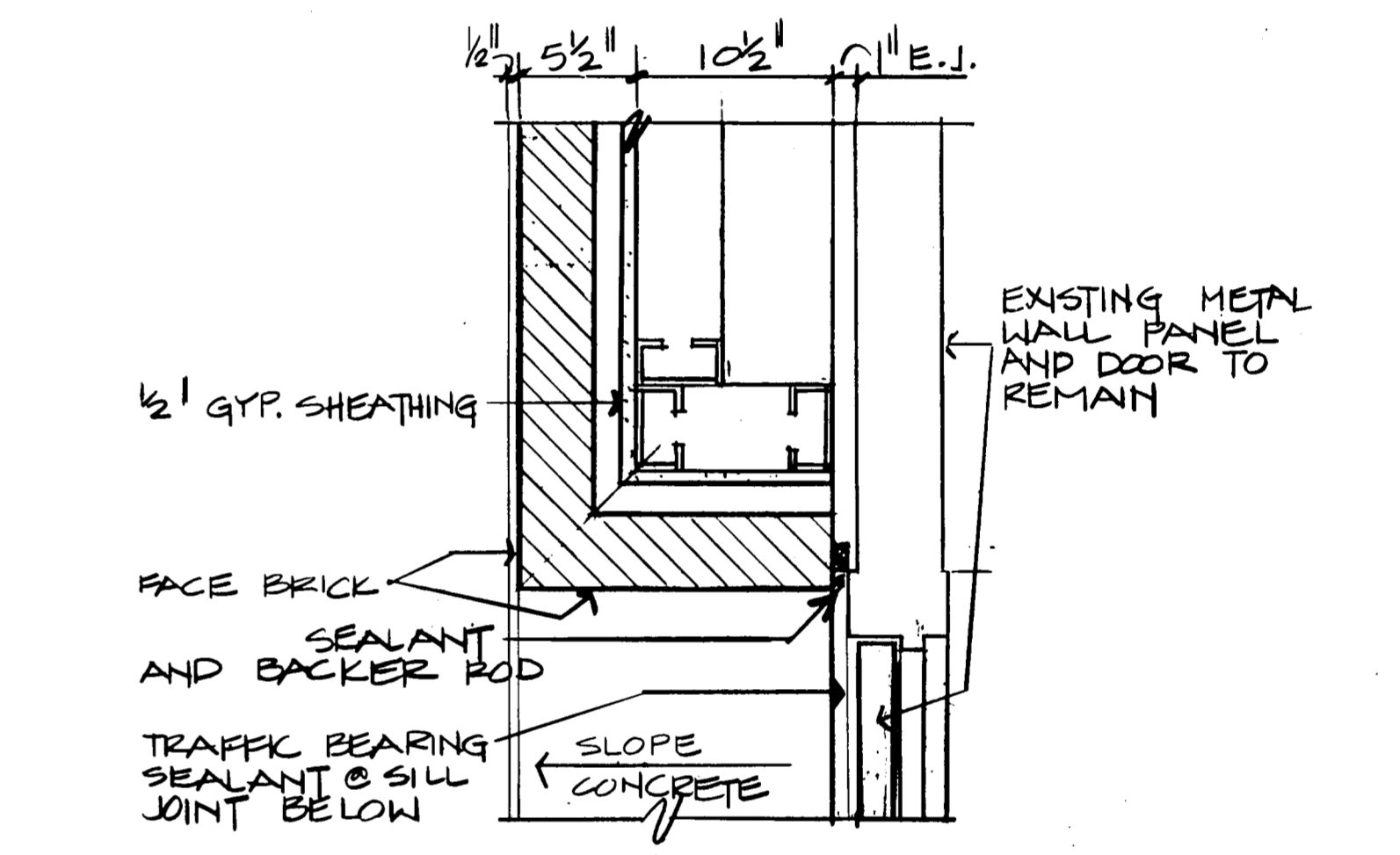
SECTION | 1" = 1'-0" | 10



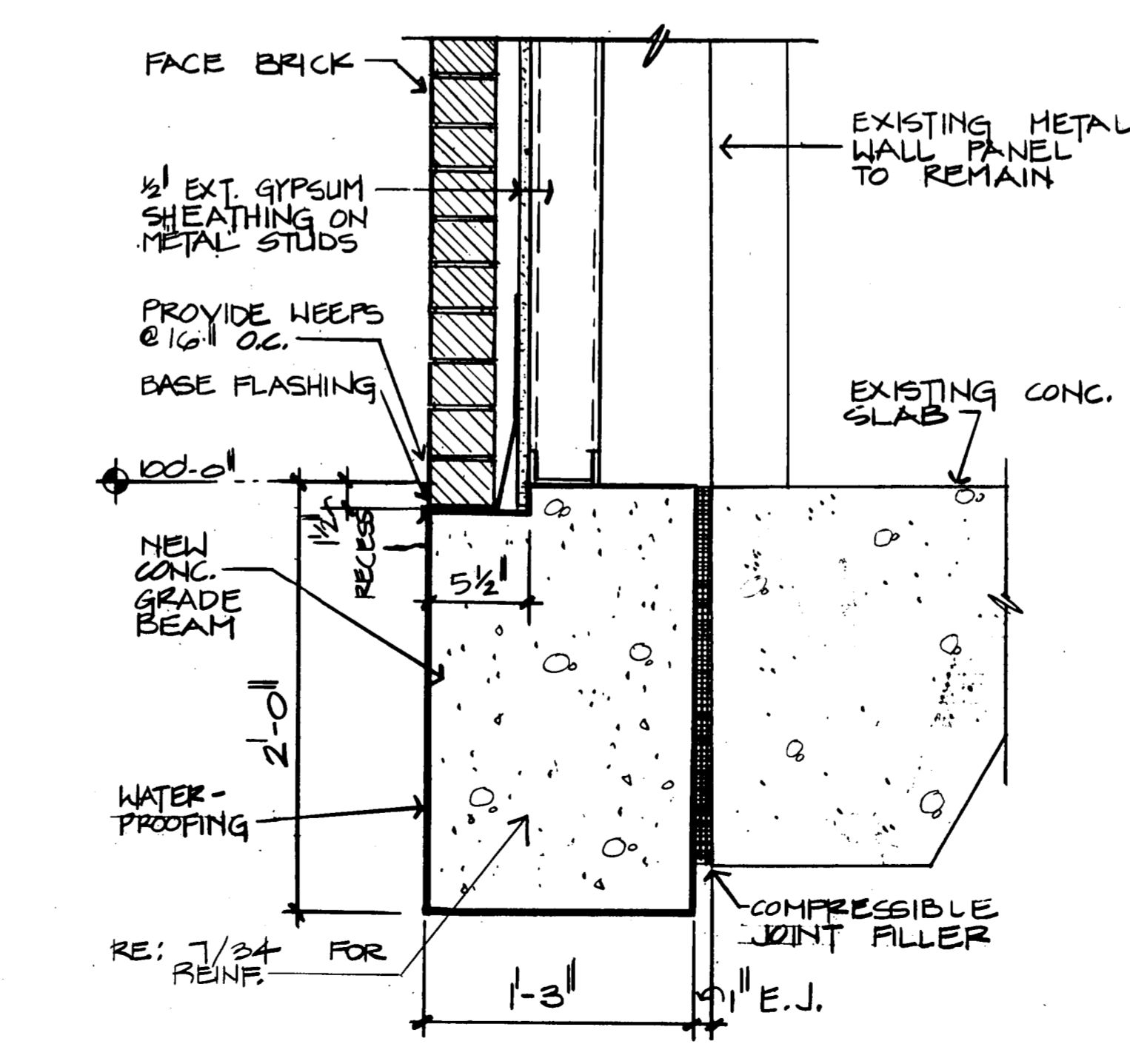
CAST STONE PANEL | 1/2" = 1'-0" | 7



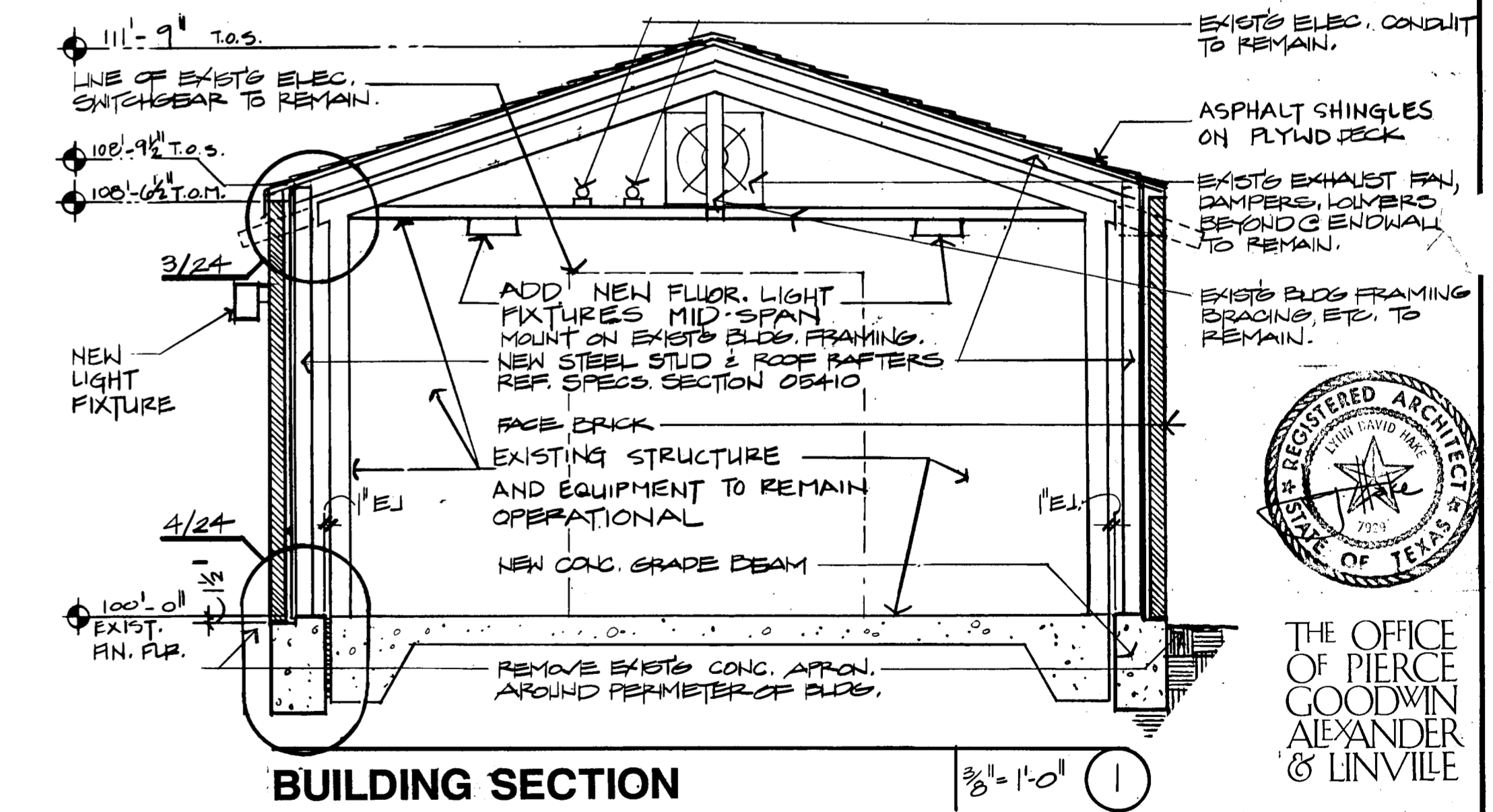
THRESHOLD DETAIL | 1/2" = 1'-0" | 5



JAMB DETAIL | 1/2" = 1'-0" | 2



GRADE BEAM SECTION | 1/2" = 1'-0" | 4



BUILDING SECTION | 3/8" = 1'-0" | 1



THE OFFICE OF PIERCE GOODWIN ALEXANDER & LINVILLE

BELTWOOD RESERVOIR EXPANSION		
ELECTRICAL SWITCHGEAR HOUSE/SECTIONS & DETAILS		
MONUMENT SIGN/ELEVATIONS & SECTIONS		
DALLAS WATER UTILITIES CITY OF DALLAS, TEXAS		
Turner Collie & Braden Inc.		
DESIGN	CONTRACT NO.	SHEET NO.
DRAWN	89-79	24
TRACED	FILE NO.	630 Q 700 F
CHECKED		OF 44
DATE		

NO.	DATE	REVISION	APPROVED

ILLUSTRATION POST, NILES27