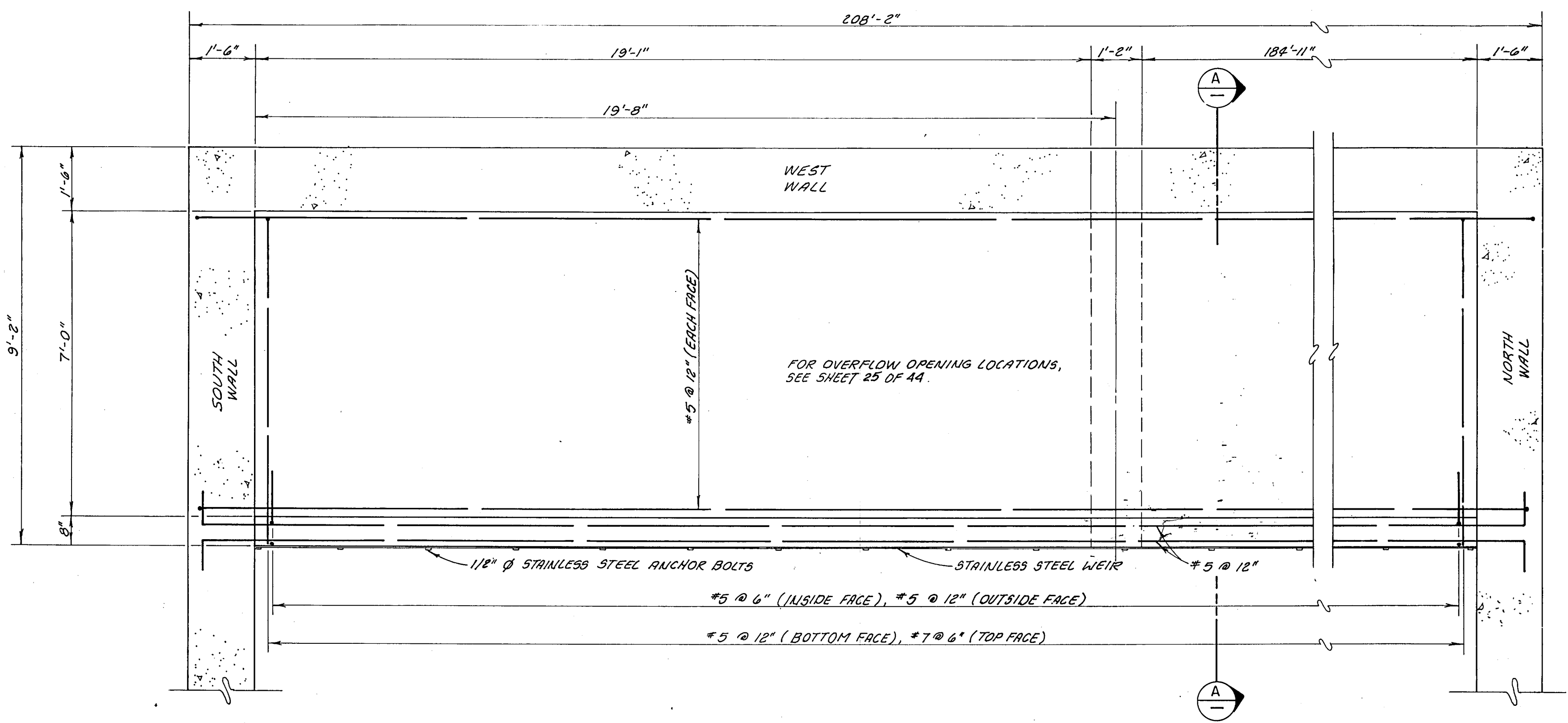
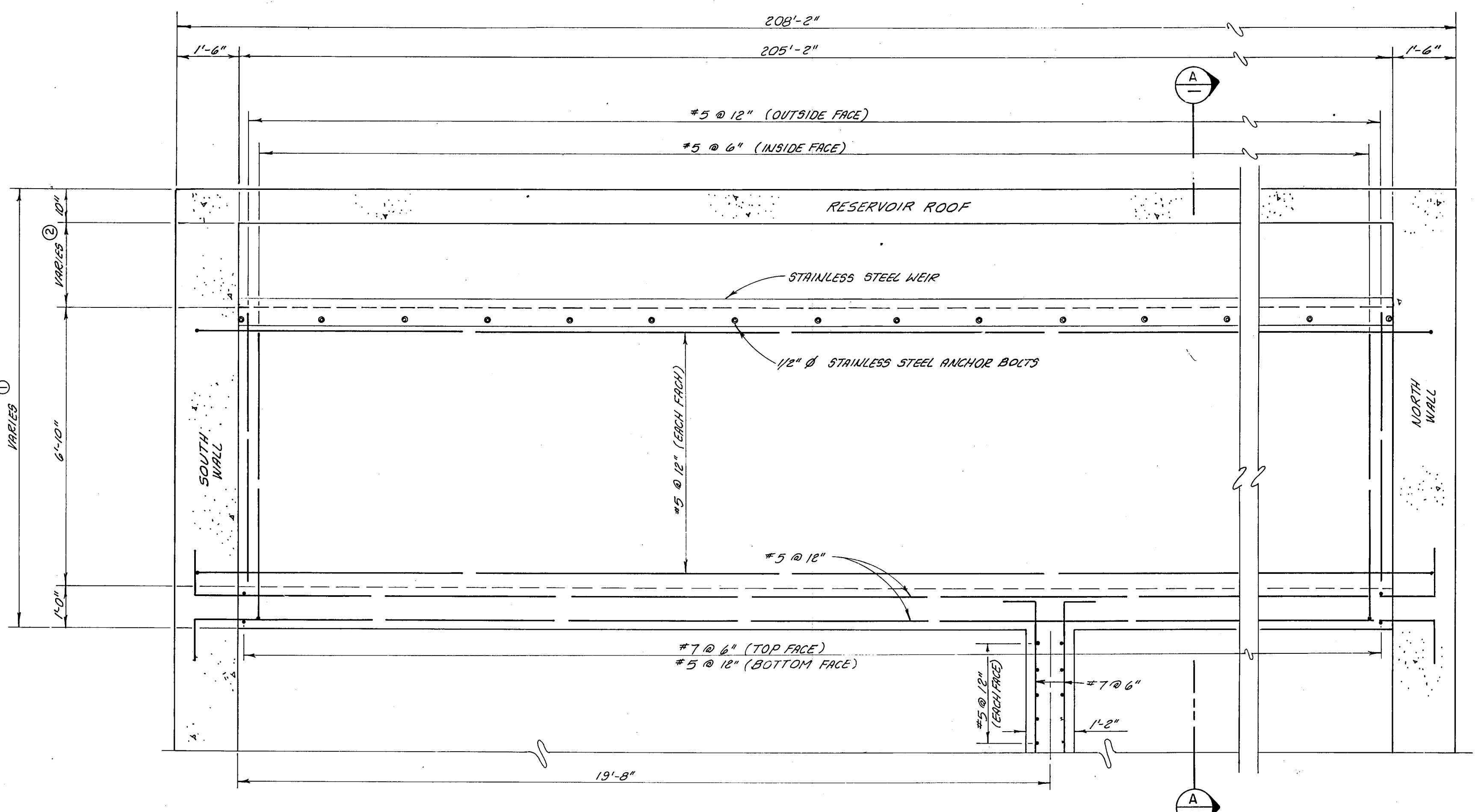


- NOTES: 1. FOR STRUCTURAL NOTES & DETAILS, SEE SHEET 34 OF 44.  
 2. WALL & ROOF SLAB REINFORCING STEEL NOT SHOWN FOR CLARITY!  
 3. ALL OPENINGS TO HAVE EXTRA REINFE STEEL AS SHOWN IN DETAIL 3 ON SHEET 34 OF 44.  
 4. ALL HOOKS SHOWN TO BE STANDARD A.C.I. HOOKS.  
 5. STEEL REINFE LAP LENGTHS AS SHOWN IN DETAIL 1 ON SHEET 34 OF 44.



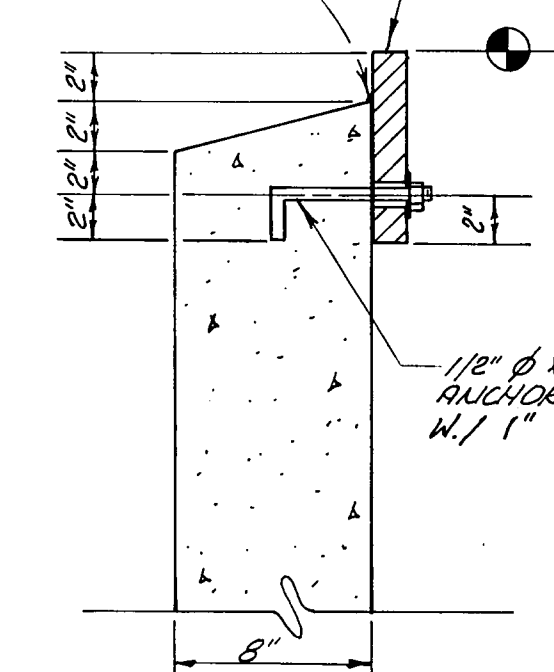
PLAN OVERFLOW WEIR  
 SCALE: 1/2" = 1'-0"



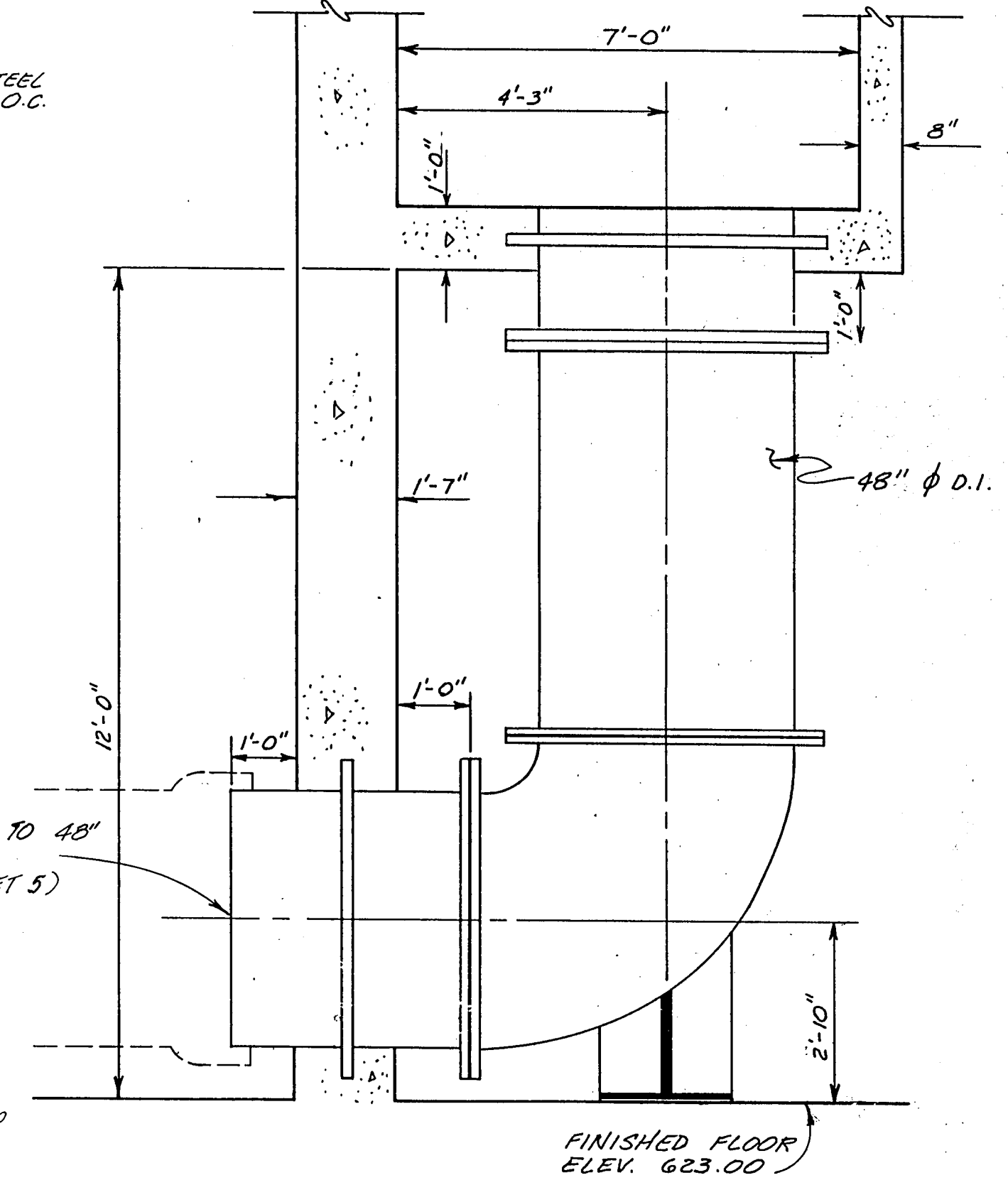
ELEVATION OVERFLOW WEIR  
 SCALE: 1/2" = 1'-0"

|            | ①       | ②     | ③      |
|------------|---------|-------|--------|
| NORTH WALL | 13'-0"  | 4'-9" | 11'-2" |
| SOUTH WALL | 10'-10" | 2'-2" | 9'-0"  |

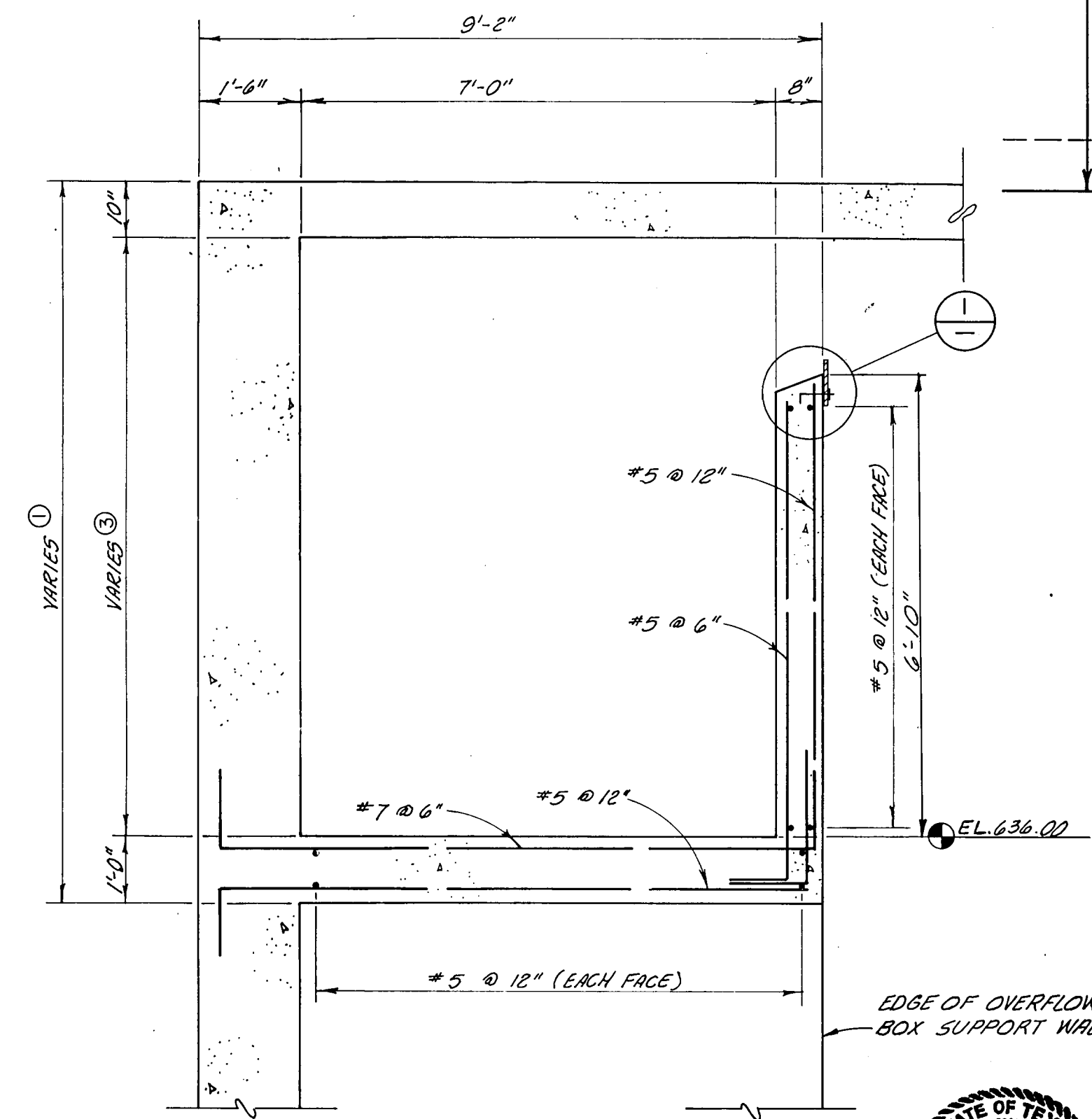
POLYURETHANE SEALANT BEAD (CONTINUOUS)  
 12 GAUGE STAINLESS STEEL WEIR W/ OVERSIZED BOLT HOLES (SEE ASTM A167-81, TY. 304)  
 ELEV. 623.00



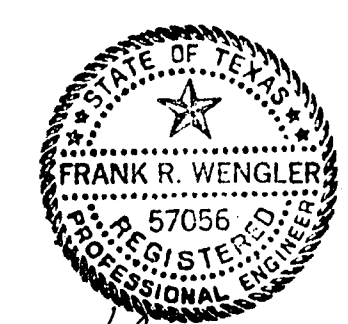
DETAIL 1  
 N.T.S.



OVERFLOW DETAIL 2  
 N.T.S.



SECTION A  
 SCALE: 1/2" = 1'-0"



| NO.  | DATE   | REVISION     | APPROVED              |
|--|--------|--------------|-----------------------|
| BELTWOOD RESERVOIR EXPANSION<br>RESERVOIR - OVERFLOW DETAILS                   |        |              |                       |
| DALLAS WATER UTILITIES<br>CITY OF DALLAS, TEXAS<br>Turner Collie & Braden Inc. |        |              |                       |
| DESIGN   | F.R.W. | CONTRACT NO. | 89-79                 |
| DRAWN  | C.A.   | FILE NO.     | 630 Q 700 F           |
| TRACED   |        |              |                       |
| CHECKED  |        |              |                       |
| DATE   | 5/89   |              |                       |
|  |        |              | SHEET NO. 31<br>OF 44 |