

TREE LIST

No.	Sta.	Lt.	Rt.	Size	Description
03	140170	02		6"	Hackberry
04	140180	145		6"	Pine Oak
05	140190	144		6"	Pine Oak
06	140200	172		6"	Pine Oak
07	140210	142		6"	Pine Oak
08	140220	129		6"	Hackberry
09	140230	142		6"	Hackberry
10	140240	115		6"	Hackberry
11	140250	172		10"	Box D'Arc
12	140260	242		10"	Box D'Arc
13	140270	181		10"	Box D'Arc
14	140280	191		10"	Box D'Arc
15	140290	172		6"	Hackberry
16	140300	202		6"	Hackberry
17	140310	202		6"	Hackberry
18	140320	202		6"	Hackberry
19	140330	142		6"	Hackberry
20	140340	242		6"	Hackberry
21	140350	242		6"	Hackberry
22	140360	102		6"	Hackberry
23	140370	102		6"	Hackberry
24	140380	102		6"	Hackberry
25	140390	102		6"	Hackberry
26	140400	102		6"	Hackberry
27	140410	102		6"	Hackberry
28	140420	102		6"	Hackberry
29	140430	102		6"	Hackberry
30	140440	102		6"	Hackberry
31	140450	102		6"	Hackberry
32	140460	102		6"	Hackberry
33	140470	102		6"	Hackberry
34	140480	102		6"	Hackberry
35	140490	102		6"	Hackberry
36	140500	102		6"	Hackberry
37	140510	102		6"	Hackberry
38	140520	102		6"	Hackberry
39	140530	102		6"	Hackberry
40	140540	102		6"	Hackberry
41	140550	102		6"	Hackberry
42	140560	102		6"	Hackberry
43	140570	102		6"	Hackberry
44	140580	102		6"	Hackberry
45	140590	102		6"	Hackberry
46	140600	102		6"	Hackberry
47	140610	102		6"	Hackberry
48	140620	102		6"	Hackberry
49	140630	102		6"	Hackberry
50	140640	102		6"	Hackberry
51	140650	102		6"	Hackberry
52	140660	102		6"	Hackberry
53	140670	102		6"	Hackberry
54	140680	102		6"	Hackberry
55	140690	102		6"	Hackberry
56	140700	102		6"	Hackberry
57	140710	102		6"	Hackberry
58	140720	102		6"	Hackberry
59	140730	102		6"	Hackberry
60	140740	102		6"	Hackberry
61	140750	102		6"	Hackberry
62	140760	102		6"	Hackberry
63	140770	102		6"	Hackberry
64	140780	102		6"	Hackberry
65	140790	102		6"	Hackberry
66	140800	102		6"	Hackberry
67	140810	102		6"	Hackberry
68	140820	102		6"	Hackberry
69	140830	102		6"	Hackberry
70	140840	102		6"	Hackberry
71	140850	102		6"	Hackberry
72	140860	102		6"	Hackberry
73	140870	102		6"	Hackberry
74	140880	102		6"	Hackberry
75	140890	102		6"	Hackberry
76	140900	102		6"	Hackberry
77	140910	102		6"	Hackberry
78	140920	102		6"	Hackberry
79	140930	102		6"	Hackberry
80	140940	102		6"	Hackberry
81	140950	102		6"	Hackberry
82	140960	102		6"	Hackberry
83	140970	102		6"	Hackberry
84	140980	102		6"	Hackberry
85	140990	102		6"	Hackberry
86	141000	102		6"	Hackberry
87	141010	102		6"	Hackberry
88	141020	102		6"	Hackberry
89	141030	102		6"	Hackberry
90	141040	102		6"	Hackberry
91	141050	102		6"	Hackberry
92	141060	102		6"	Hackberry
93	141070	102		6"	Hackberry
94	141080	102		6"	Hackberry
95	141090	102		6"	Hackberry
96	141100	102		6"	Hackberry
97	141110	102		6"	Hackberry
98	141120	102		6"	Hackberry
99	141130	102		6"	Hackberry
100	141140	102		6"	Hackberry

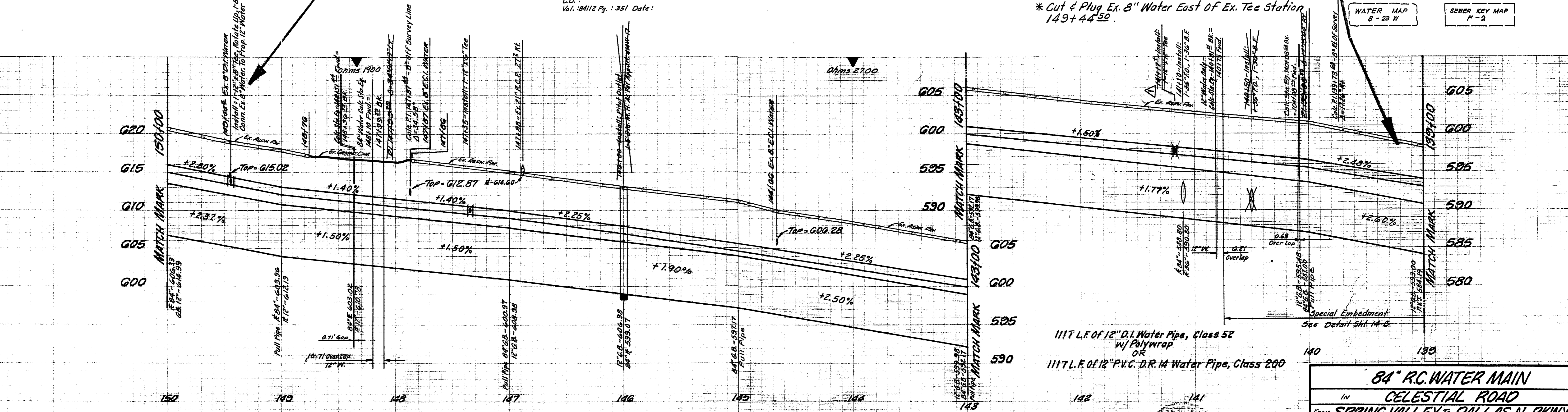
CONT. # 84-45
CITY OF ADDISON

JHY Corporation
A Texas Corporation
100' Temp. Working Space For The 84" Water Main
From Sta. 143+40.2 To Sta. 149+57.2
Abst. No. 157 Bk. 0108
In The City of Addison
C.O.
Vol. 04112 Pg. 351 Date:

NOTE!
* Install:
430 L.F. OF Temp. 2" Water Line Above The Ground,
Prior To The Const. Of The 84" Water Main.
* Conn. Ex. House Services To The Temp. Line.
* #5505, #5510, #5434, Will Be Served From The
2" Temp. Line During The Const. Time.
* Cut & Plug Ex. 8" Water East Of Ex. Tee Station
149+44.50.

WATER MAP
8 - 23 W

SEWER KEY MAP
F - 2



T&M - God Main in PIP #12 N-W-107 17 1/2 Lt. Sta. 131+03.5 S. Side
Of Celestial Rd. & 200' E. Of Vinwood Rd. ELEV - 555.46

T&M - 12" CUT ON CONC. BASE OF 6" BRICK WALL @ N.E. COR. OF
CELESTIAL RD. & MONTFORT DR. ELEV - 626.81

1100 L.F. OF 84" Prestressed Concrete Embedded Cyl. Pipe, Class 60
ALTERNATE
1100 L.F. OF 84" Inside Dia. Steel Pipes (Per Part "T" Special Specifications)

1117 L.F. OF 12" D.I. Water Pipe, Class 52
w/ Polywrap
OR
1117 L.F. OF 12" P.V.C. D.R. 14 Water Pipe, Class 200

84" R.C. WATER MAIN
IN
CELESTIAL ROAD
FROM **SPRING VALLEY** TO **DALLAS N. PKWY.**
DALLAS WATER UTILITIES DEPT.
CITY OF DALLAS, TEXAS

DESIGN	DRAWN	DATE	SCALE	NOTES	FILE	NO.
S. REZAI	N. REZAI	JAN. 84	1" = 40'			
	S. PEREL					

12

CON. # 84-45
Revised By: S. Rejai 3-6-85

TWA 212
Nov. 14, 1985