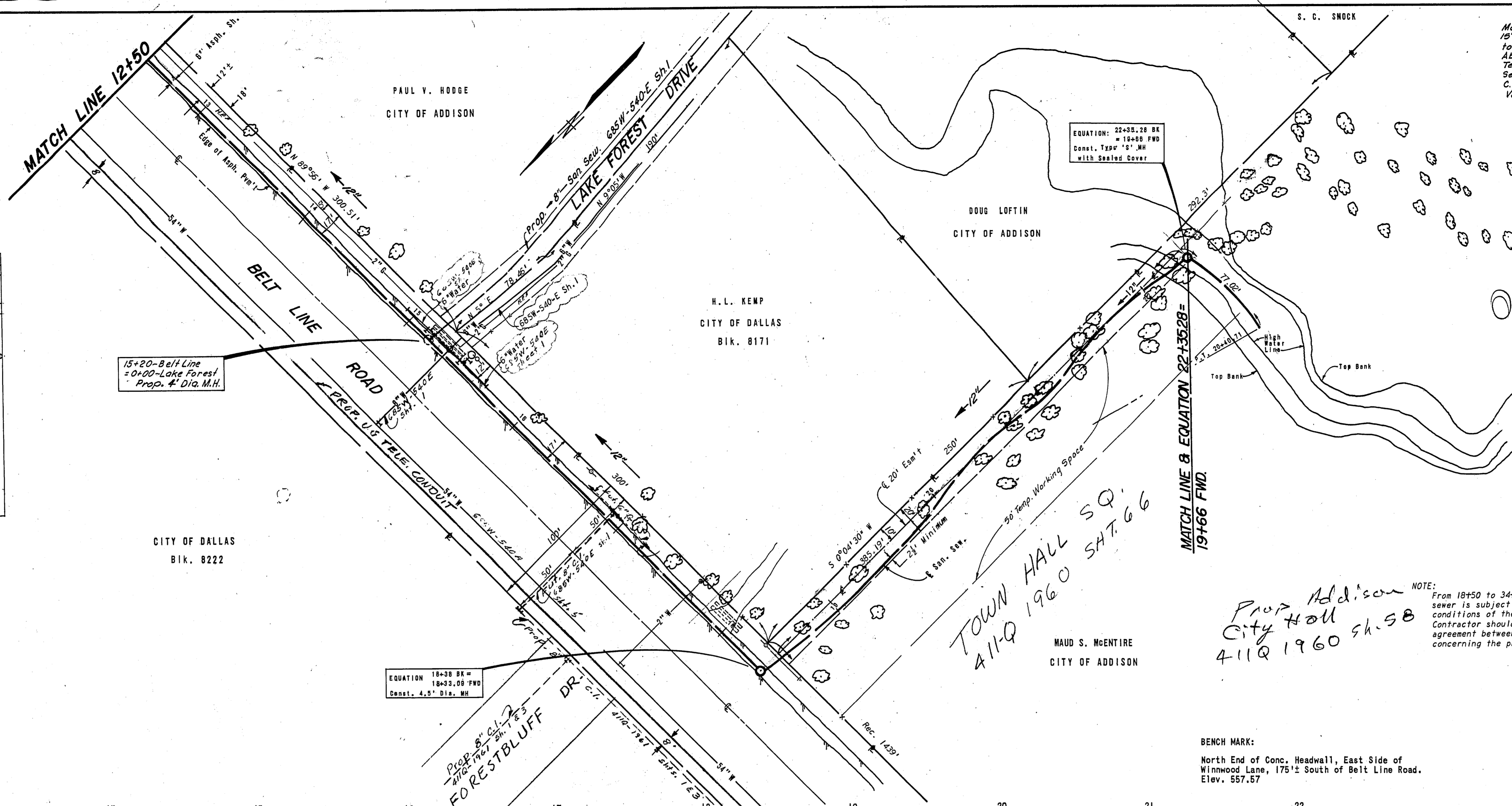


Maud S. McEntire, Oct. 13, 1970  
 15' E 20' S San. Sew. Main Esmt. From Sta. 18+50 to 34+60.  
 Abst. 157  
 Temp. Working Space Granted as Shown  
 See Instrument for any and all special conditions.  
 C.O. ~ 70-1591  
 Vol. ~ 70206 Pg. ~ 0691 Oct. 22, 1970

STA.	LT.	RT.	SIZE	VARIETY
14+58	18'		18"	PECAN
14+59	18'		18"	PECAN
14+60	18'		18"	PECAN
14+61	18'		18"	PECAN
14+62	18'		18"	PECAN
14+63	18'		18"	PECAN
14+64	18'		18"	PECAN
14+65	18'		18"	PECAN
14+66	18'		18"	PECAN
14+67	18'		18"	PECAN
14+68	18'		18"	PECAN
14+69	18'		18"	PECAN
14+70	18'		18"	PECAN
14+71	18'		18"	PECAN
14+72	18'		18"	PECAN
14+73	18'		18"	PECAN
14+74	18'		18"	PECAN
14+75	18'		18"	PECAN
14+76	18'		18"	PECAN
14+77	18'		18"	PECAN
14+78	18'		18"	PECAN
14+79	18'		18"	PECAN
14+80	18'		18"	PECAN
14+81	18'		18"	PECAN
14+82	18'		18"	PECAN
14+83	18'		18"	PECAN
14+84	18'		18"	PECAN
14+85	18'		18"	PECAN
14+86	18'		18"	PECAN
14+87	18'		18"	PECAN
14+88	18'		18"	PECAN
14+89	18'		18"	PECAN
14+90	18'		18"	PECAN
14+91	18'		18"	PECAN
14+92	18'		18"	PECAN
14+93	18'		18"	PECAN
14+94	18'		18"	PECAN
14+95	18'		18"	PECAN
14+96	18'		18"	PECAN
14+97	18'		18"	PECAN
14+98	18'		18"	PECAN
14+99	18'		18"	PECAN
15+00	18'		18"	PECAN
15+01	18'		18"	PECAN
15+02	18'		18"	PECAN
15+03	18'		18"	PECAN
15+04	18'		18"	PECAN
15+05	18'		18"	PECAN
15+06	18'		18"	PECAN
15+07	18'		18"	PECAN
15+08	18'		18"	PECAN
15+09	18'		18"	PECAN
15+10	18'		18"	PECAN
15+11	18'		18"	PECAN
15+12	18'		18"	PECAN
15+13	18'		18"	PECAN
15+14	18'		18"	PECAN
15+15	18'		18"	PECAN
15+16	18'		18"	PECAN
15+17	18'		18"	PECAN
15+18	18'		18"	PECAN
15+19	18'		18"	PECAN
15+20	18'		18"	PECAN
15+21	18'		18"	PECAN
15+22	18'		18"	PECAN
15+23	18'		18"	PECAN
15+24	18'		18"	PECAN
15+25	18'		18"	PECAN
15+26	18'		18"	PECAN
15+27	18'		18"	PECAN
15+28	18'		18"	PECAN
15+29	18'		18"	PECAN
15+30	18'		18"	PECAN
15+31	18'		18"	PECAN
15+32	18'		18"	PECAN
15+33	18'		18"	PECAN
15+34	18'		18"	PECAN
15+35	18'		18"	PECAN
15+36	18'		18"	PECAN
15+37	18'		18"	PECAN
15+38	18'		18"	PECAN
15+39	18'		18"	PECAN
15+40	18'		18"	PECAN
15+41	18'		18"	PECAN
15+42	18'		18"	PECAN
15+43	18'		18"	PECAN
15+44	18'		18"	PECAN
15+45	18'		18"	PECAN
15+46	18'		18"	PECAN
15+47	18'		18"	PECAN
15+48	18'		18"	PECAN
15+49	18'		18"	PECAN
15+50	18'		18"	PECAN

Water in Cul  
 7-14-64  
 Water at Mont &  
 Bellline  
 11-17-70  
 Sewer in Culch  
 12-2-70



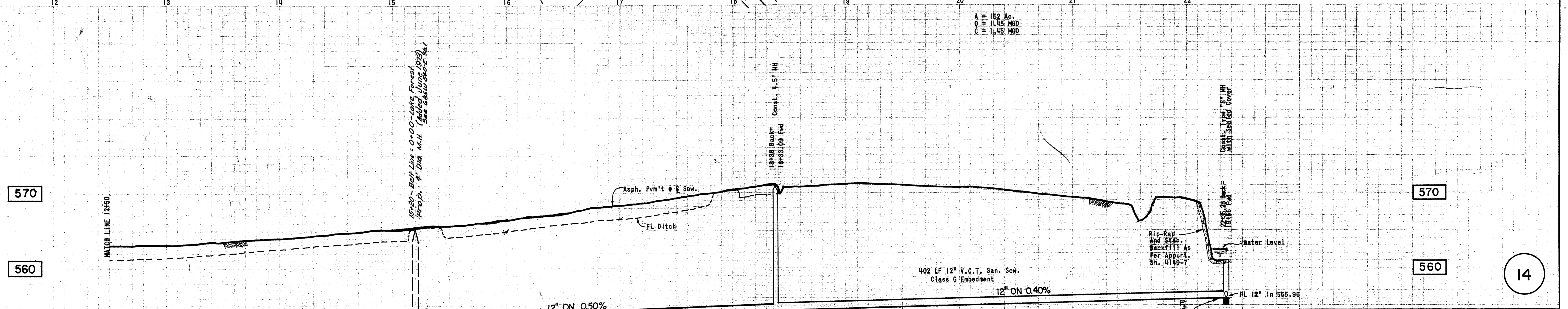
Oaks North Add.  
 411-Q-1960 Sh. 47, 98

TOWN HALL SQ.  
 411-Q 1960 SH. 66

Prop Addison  
 City Hall  
 411-Q 1960 Sh. 58

NOTE:  
 From 18+50 to 34+53, construction of sanitary sewer is subject to the special terms and conditions of the Maud S. McEntire easement. Contractor should also be aware of the agreement between developer and Maud S. McEntire concerning the protection of trees and shrubbery.

BENCH MARK:  
 North End of Conc. Headwall, East Side of Winnwood Lane, 175'± South of Belt Line Road. Elev. 557.57



PROJECT:  
 DESIGN BY *Walter F. Albritton* DATE 11-14-70  
 R.O.W. APPROVED *H.L. Kemp* 12-2-70  
 ENGINEER OF DESIGN *W.F. Albritton* DATE 12-2-70  
 CONTRACT. NO. 70-192-P ~ Column ~ 10-16-70

ALBRITTON & ASSOCIATES, INC.  
 CONSULTING ENGINEERS  
 404 U.C.C. BLDG. 741-4884  
 DALLAS, TEXAS 75207  
 BY *Walter F. Albritton P.E.*



BELL BRANCH SANITARY SEWER					
FROM WHITE ROCK CREEK TO NOELL RD.					
DALLAS WATER UTILITIES DEPT.					
CITY OF DALLAS, TEXAS					
DESIGN	DRAWN	DATE	SCALE	NOTES	FILE NO.
G.W.F.	M.J.E.	Sept, 1970	1" = 40' H. 1" = 6' V.		411-Q 1960A