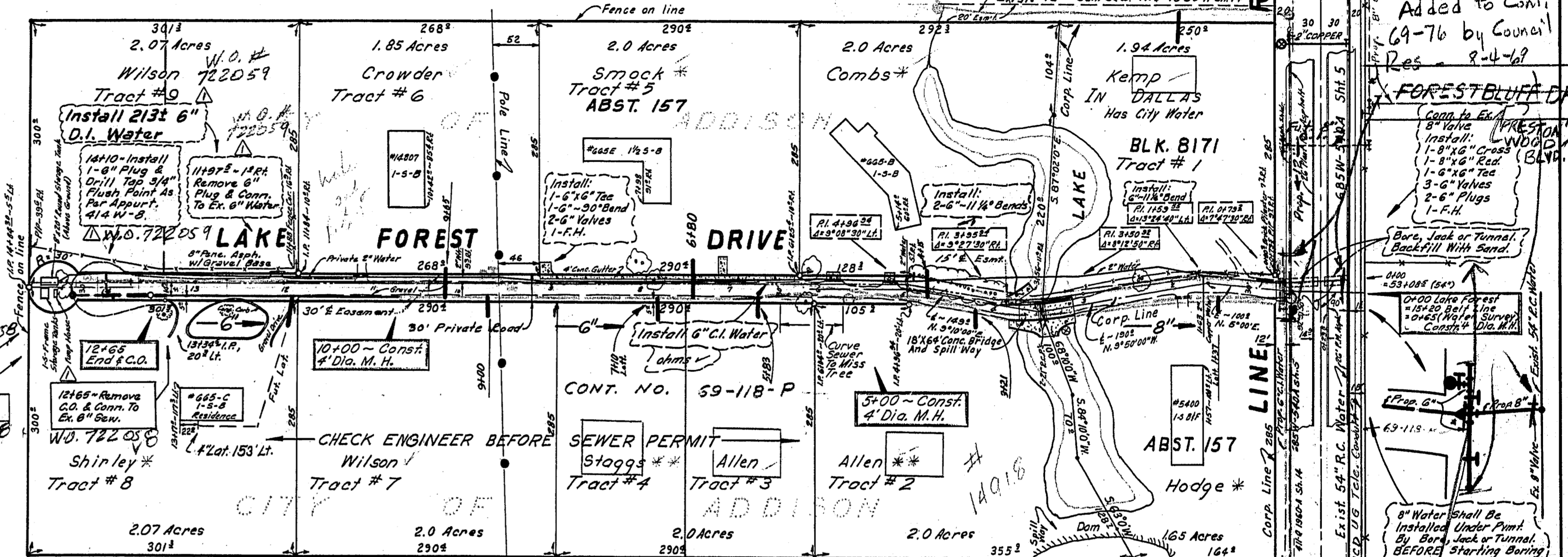


STATION	LT	RT	DESCRIPTION
4100	100'	100'	1.85 Acres
4105	100'	100'	2.0 Acres
4110	100'	100'	2.0 Acres
4115	100'	100'	2.0 Acres
4120	100'	100'	2.0 Acres
4125	100'	100'	2.0 Acres
4130	100'	100'	2.0 Acres
4135	100'	100'	2.0 Acres
4140	100'	100'	2.0 Acres
4145	100'	100'	2.0 Acres
4150	100'	100'	2.0 Acres
4155	100'	100'	2.0 Acres
4160	100'	100'	2.0 Acres
4165	100'	100'	2.0 Acres
4170	100'	100'	2.0 Acres
4175	100'	100'	2.0 Acres
4180	100'	100'	2.0 Acres
4185	100'	100'	2.0 Acres
4190	100'	100'	2.0 Acres
4195	100'	100'	2.0 Acres
4200	100'	100'	2.0 Acres
4205	100'	100'	2.0 Acres
4210	100'	100'	2.0 Acres
4215	100'	100'	2.0 Acres
4220	100'	100'	2.0 Acres
4225	100'	100'	2.0 Acres
4230	100'	100'	2.0 Acres
4235	100'	100'	2.0 Acres
4240	100'	100'	2.0 Acres
4245	100'	100'	2.0 Acres
4250	100'	100'	2.0 Acres
4255	100'	100'	2.0 Acres
4260	100'	100'	2.0 Acres
4265	100'	100'	2.0 Acres
4270	100'	100'	2.0 Acres
4275	100'	100'	2.0 Acres
4280	100'	100'	2.0 Acres
4285	100'	100'	2.0 Acres
4290	100'	100'	2.0 Acres
4295	100'	100'	2.0 Acres
4300	100'	100'	2.0 Acres

Weldon Edward Combs & Anna D. Combs 4-25-69  
 15' Strip Easement along East side of property, see instrument  
 The City of Dallas shall not have right to remove or harm  
 any tree described in tree list and located on said  
 property without written permission of owners  
 from Sta. 4+00 to 6+12  
 Blk ~ 8171 Abst ~ 157  
 The City of Dallas shall be responsible for  
 installing 6" water on East side of street  
 C.O. ~ 69-3495  
 Vol. ~ 69123 Pg. ~ 114, 115, 116, 117  
 Date ~ June 24, 1969

PRESTONWOOD MALL  
 4110 1961 SH. 3-15  
 4110-1961  
 SH. 1 E 3



W.O. # 722058  
 NOTE - Contractor To Construct  
 6" Deep Cut Lateral Connection  
 With C.O. For Tract No. 9 At  
 Sta. 13+35.1 (As Per Appurt.  
 414 S-21) And Construct 6"  
 Lateral With C.O. On 2%  
 Grade For Tract No. 8.

LAKE FOREST DRIVE Dedicated  
 To The CITY OF ADDISON For  
 Street & Utility Purposes By  
 Easement Instruments Dated  
 June 1974 By The Following  
 Property Owners:  
 John L. Shirley And Wife, Wanda Shirley  
 Donald R. Dinsmore And Wife, Caryl Dinsmore  
 Dr. J.R. Keltie And Wife, Nancy R. Keltie  
 H.L. Kemp And Wife, Rena Kemp  
 Paul Hodge And Wife, Hazel Hodge  
 Walter A. Sohm, Jr. And Wife, Bobbie Sohm, Jr.  
 Frank L. Crowder And Wife, Marion Crowder

Philip Edward Wilson, Homer L. Kemp, Reno A. Kemp, 4-25-69  
 John B. Allen, Virginia D. Allen, Kenneth L. Spaggs,  
 Priscilla Spaggs, S. C. Smock Jr., Dean C. Smock,  
 Frank L. Crowder, Marion M. Crowder, John L. Shirley,  
 Wanda L. Shirley,  
 15' 130' E Esm. ~ From Sta. 0+70.2 to 14+84.4  
 Tracts # 1, 2, 3, 4, 5, 6, 7, 8, 9  
 Blk ~ 8171 Abst ~ 157  
 C.O. ~ 69-3495  
 Vol. ~ 69123 Pg. ~ 117, 118, 119  
 Date ~ June 24, 1969

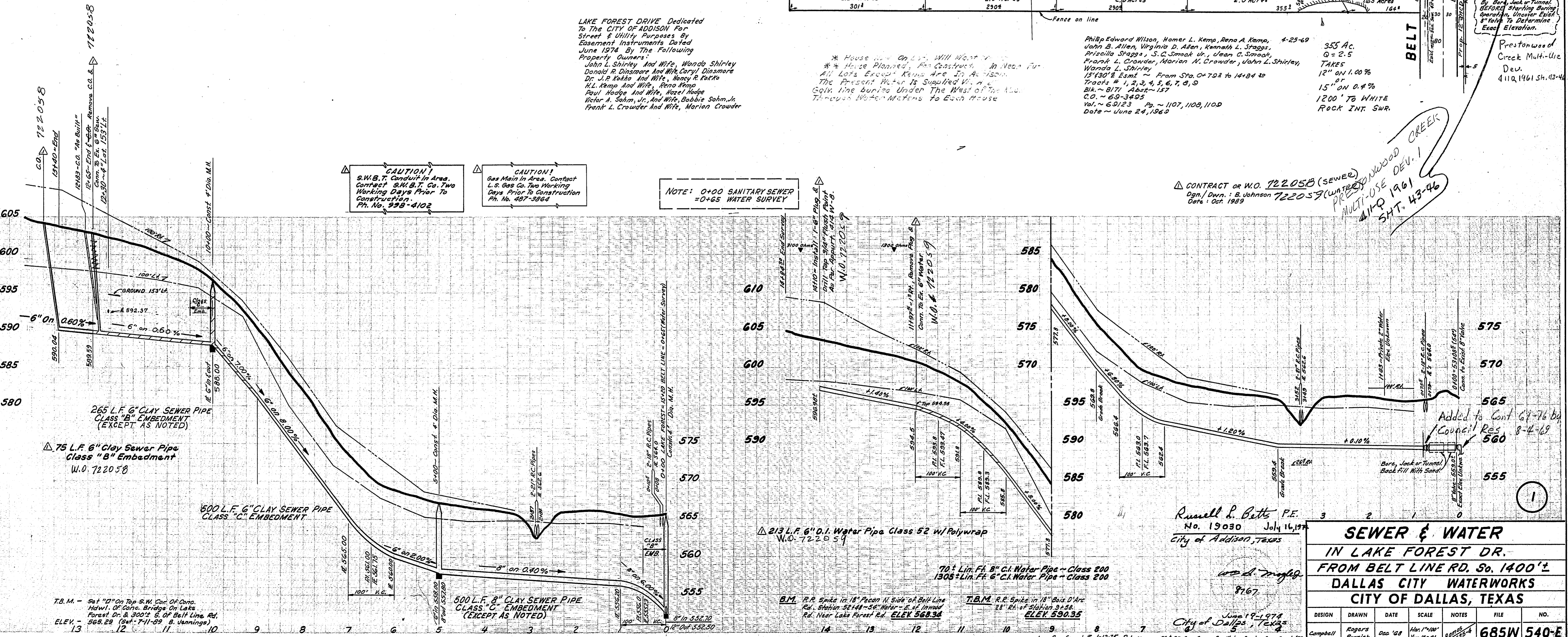
355 Ac.  
 Q = 2.5  
 TAKES  
 12" ON 1.00%  
 15" ON 0.4%  
 1200' TO WHITE  
 ROCK INT. SWR.

CAUTION!  
 S.W.B.T. Conduit In Area.  
 Contact S.W.B.T. Co. Two  
 Working Days Prior To  
 Construction.  
 Ph. No. 399-4102

CAUTION!  
 Gas Main In Area. Contact  
 L.S. Gas Co. Two Working  
 Days Prior To Construction  
 Ph. No. 487-3264

NOTE: 0+00 SANITARY SEWER  
 = 0+65 WATER SURVEY

CONTRACT OR W.O. 722058 (SEWER)  
 Dgn./Own.: B. Johnson 722059 (WATER)  
 Date: Oct. 1969



Added to Cont. 67-76 by  
 Council Res. 8-4-68  
 FOREST BLVD DR  
 PRESTONWOOD MALL  
 MULTI-USE DEV. I  
 4110 1961  
 SH. 43-46

**SEWER & WATER**  
 IN LAKE FOREST DR.  
 FROM BELT LINE RD. So. 1400'±  
 DALLAS CITY WATERWORKS  
 CITY OF DALLAS, TEXAS

DESIGN	DRAWN	DATE	SCALE	NOTES	FILE	NO.
Campbell	Rogers	Dec '68	1" = 100'		685W 540-E	

Russell P. Betts P.E.  
 No. 19030 July 16, 1974  
 City of Addison, Texas

T.B.M. - Set 10' On Top S.W. Cor. Of Comp.  
 Hdwl. Of Comp. Bridge On Lake  
 Forest Dr. & 300'± E. Of Belt Line Rd.  
 ELEV. = 565.28 (Set 7-11-69 B. Jennings)

B.M. R.R. Spike in 18' Pecan N. Side of Belt Line  
 Rd. Station 52144-56' Water - E. of Inwood  
 Rd. Near Lake Forest Ed. ELEV 568.34

T.B.M. R.E. Spike in 18' Bois D'Arc  
 Rd. Station 52144-56' Water - E. of Inwood  
 Rd. Near Lake Forest Ed. ELEV 590.35

City of Dallas, Texas  
 June 19, 1974