

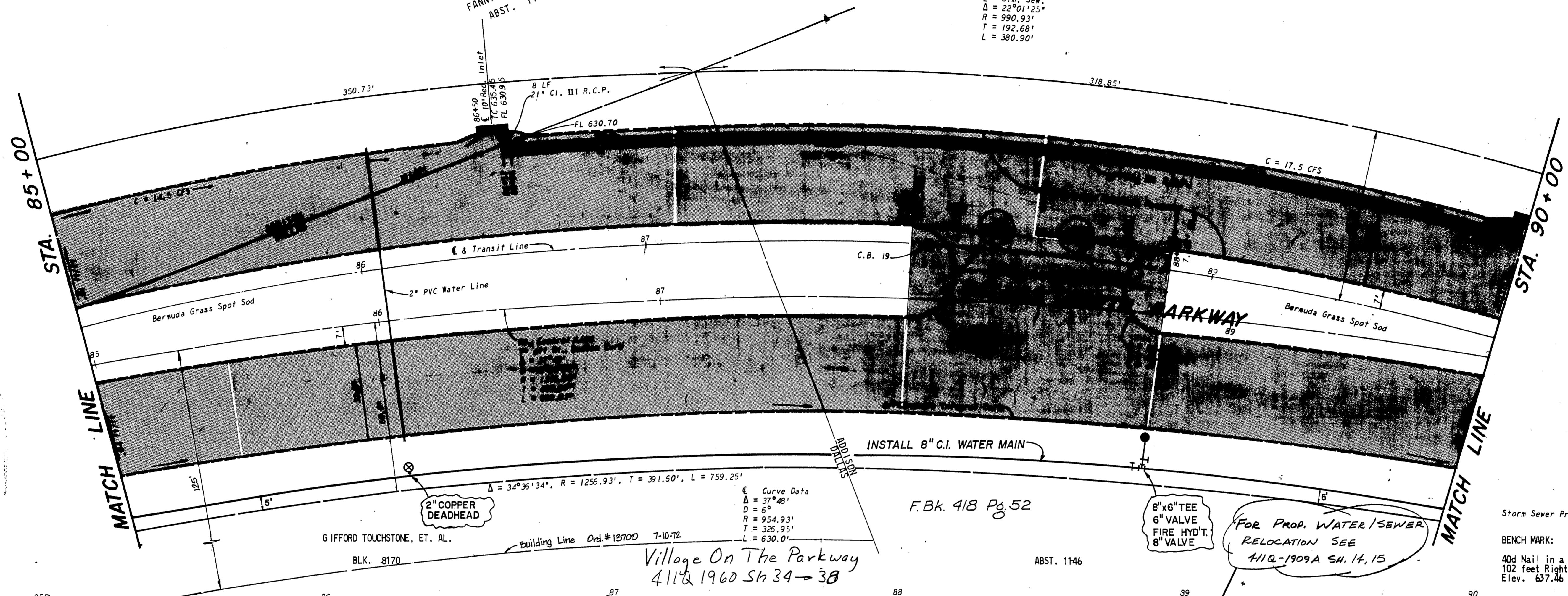
FANNIE NOELL RATHER
ABST. 1146

Stm. Sew.
Δ = 22°01'25"
R = 990.93'
T = 192.68'
L = 380.90'

GIFFORD TOUCHSTONE, ET. AL.

DALLAS COUNTY PUB. WKS. Approval
For 8" Water Along E. Side Of
DALLAS NORTH PARKWAY From
I.H. 635 To BELT LINE RD. By
Letter Of October 26, 1970
JOHN PARRISH

NOTE:
Due to soil resistivity readings
of less than 1500 OHMS per CC.,
all C.I. water pipe shall have
8 mil thickness polyethylene tube
wrap.
To obtain specifications contact
R.T. Cook
500 South Ervay
Rm. 307A



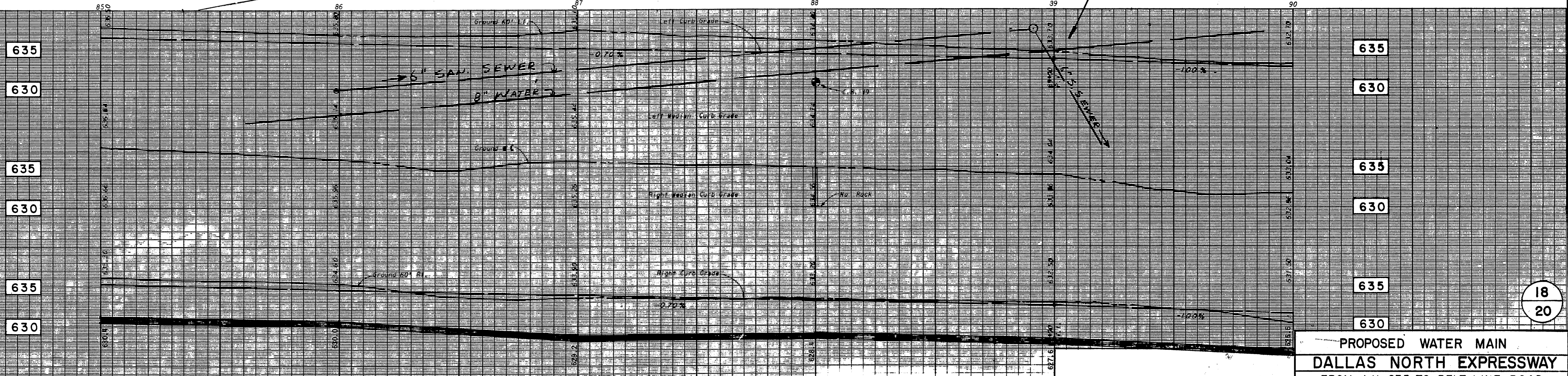
F.B.K. 418 Pg. 52

FOR PROP. WATER/SEWER
RELOCATION SEE
411Q-1909A SH. 14, 15

Storm Sewer Profile Sh. 26/27

BENCH MARK:
40d Nail in a 4" Hackberry Tree
102 feet Right of Sta. 85+42.
Elev. 637.46

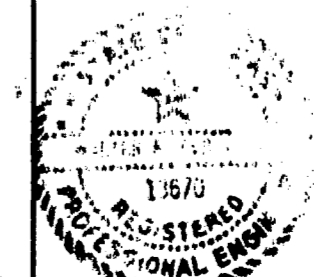
Village On The Parkway
411Q 1960 Sh 34-38



480.0 L.F. 8" C.I. PIPE CLASS 200
EMBEDMENT "A"

R.O.W. APPROVED: *[Signature]*
1073 S. Maple St. 11-17-70
ENGINEER OF DESIGN, DALLAS WATER UTILITIES DEPT.
CONTRACT NO. 70-217-P-Cullum-11-17-70

ALBRITTON & ASSOCIATES, INC.
CONSULTING ENGINEERS
404 U.C.C. BLDG. 741-4884
DALLAS, TEXAS 75207
BY: *[Signature]*



PROPOSED WATER MAIN						
DALLAS NORTH EXPRESSWAY						
FROM I.H. 635 TO BELT LINE ROAD						
DALLAS WATER UTILITIES DEPT.						
CITY OF DALLAS, TEXAS						
DESIGN	DRAWN	DATE	SCALE	NOTES	FILE	NO.
G.W.F.	Q.D.W.	Sept, 1970	1" = 20' Hor. 1" = 6' Vert.		685 W	540F

18
20