

Stm. Sew.
 $\Delta = 90^\circ$
 $R = 40'$
 $T = 40'$
 $L = 62.83'$

Curve Data
 $\Delta = 36^\circ 13'$
 $D = 954.83'$
 $T = 312.27'$
 $L = 603.61'$

DALLAS COUNTY PUB. WKS. Approval
 For 8" Water Along E. Side Of
 DALLAS NORTH PARKWAY From
 I.H. 635 to BELT LINE RD. BY
 Letter Of OCTOBER 26, 1970
 JOHN PARRISH

MOBIL OIL CO.
 ABST. 482

GIFFORD TOUCHSTONE, ET. AL.
 ABST. NO. 157

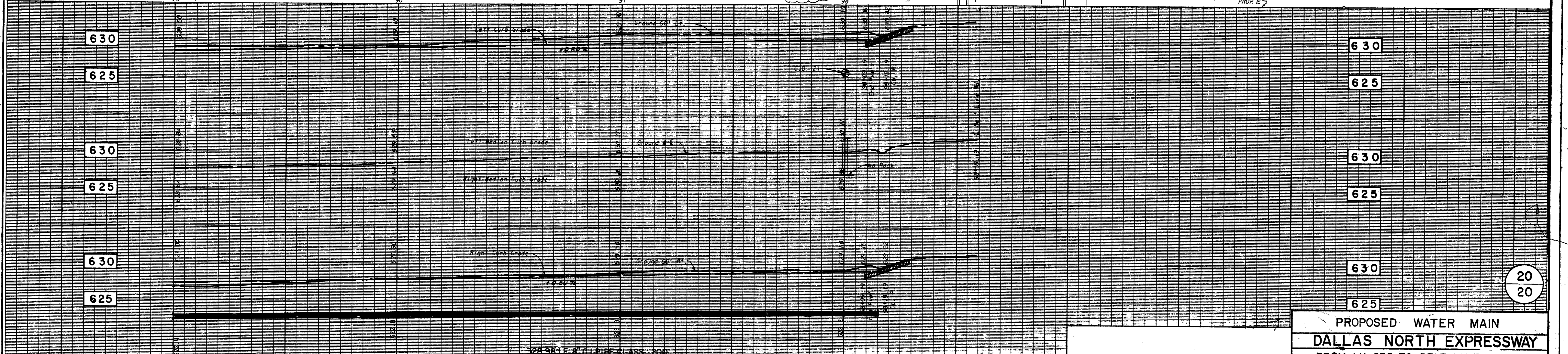
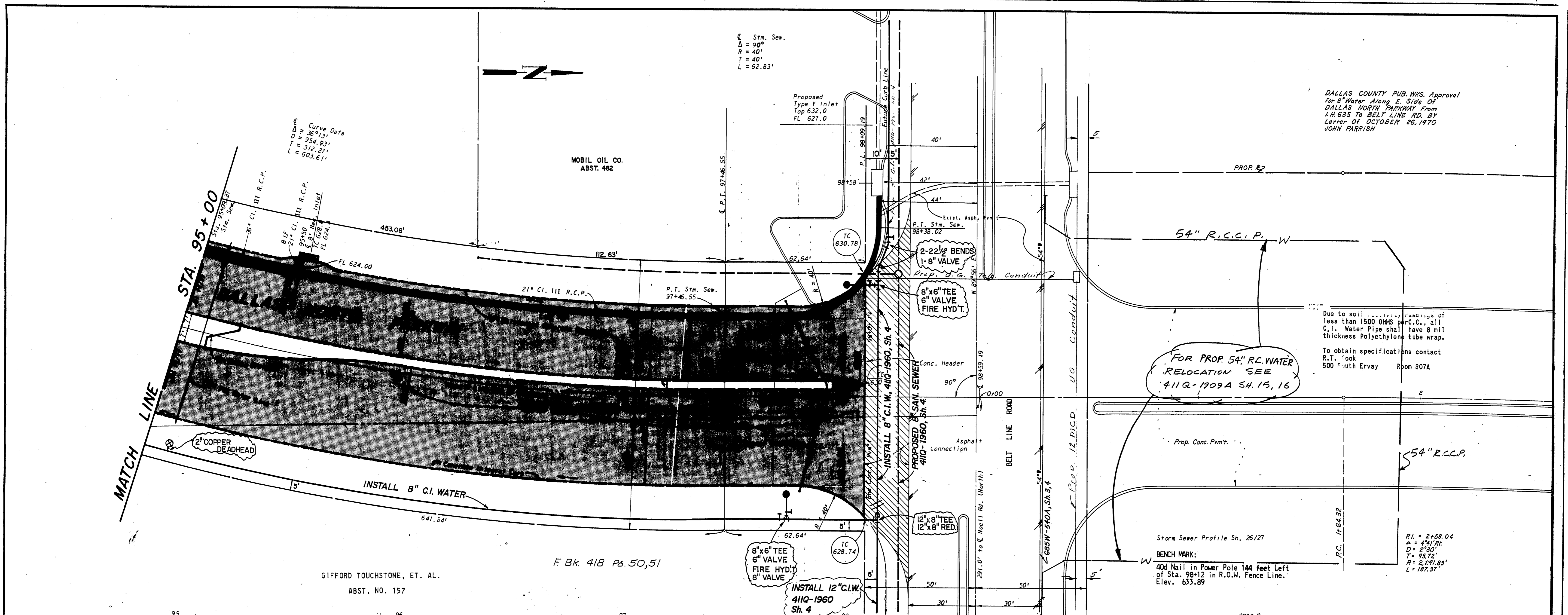
F Bk. 418 Ps. 50, 51

FOR PROP. 54" R.C. WATER
 RELOCATION SEE
 411 Q-1909A SH. 15, 16

Due to soil resistivity readings of
 less than 1500 OHMS per C.C., all
 C.I. Water Pipe shall have 8 mil
 thickness Polyethylene tube wrap.
 To obtain specifications contact
 R.T. Cook
 500 South Ervay Room 307A

Storm Sewer Profile Sh. 26/27
 BENCH MARK:
 40d Nail in Power Pole 144 feet Left
 of Sta. 98+12 in R.O.W. Fence Line.
 Elev. 633.89

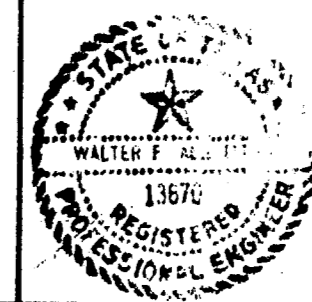
PI. = 2+58.04
 $\Delta = 44^\circ 11'$
 $D = 2'50"$
 $T = 93.72'$
 $R = 2,291.83'$
 $L = 187.37'$



328.981 F 8" C.I. PIPE CLASS 200
 EMBEDMENT "A"

R.O.W. APPROVED *John B. Land* 11-17-70
W. B. Smith 11-17-70
 ENGINEER OF DESIGN, DALLAS WATER UTILITIES DEPT.
 CONTRACT NO. 70-217-P - Cullum - 11-17-70

ALBRITTON & ASSOCIATES, INC.
 CONSULTING ENGINEERS
 404 UCC BLDG. 741-4884
 DALLAS, TEXAS 75207
 BY *Halter J. Albritton*



PROPOSED WATER MAIN					
DALLAS NORTH EXPRESSWAY					
FROM I.H. 635 TO BELT LINE ROAD					
DALLAS WATER UTILITIES DEPT.					
CITY OF DALLAS, TEXAS					
DESIGN	DRAWN	DATE	SCALE	NOTES	FILE NO.
G.W.F.	Q.D.W.	Sept., 1970	1" = 20' Hor. 1" = 6' Ver.		685 W 540F

20
20