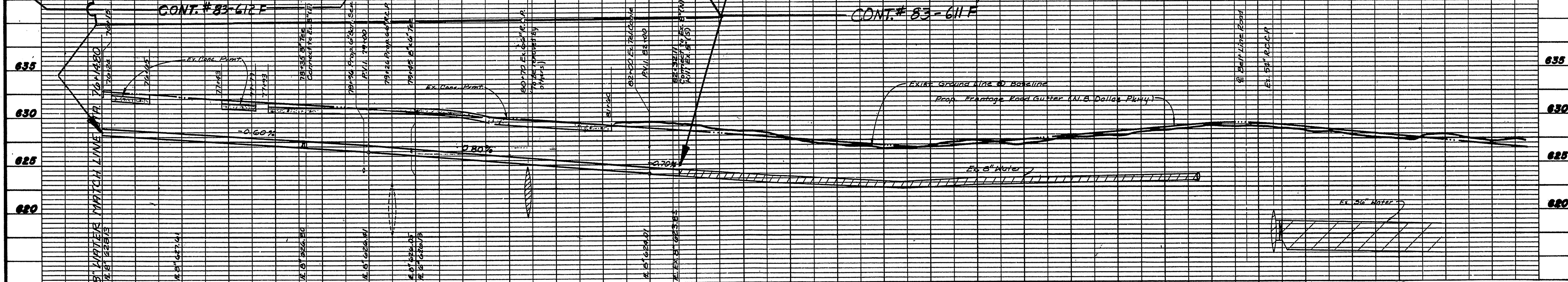
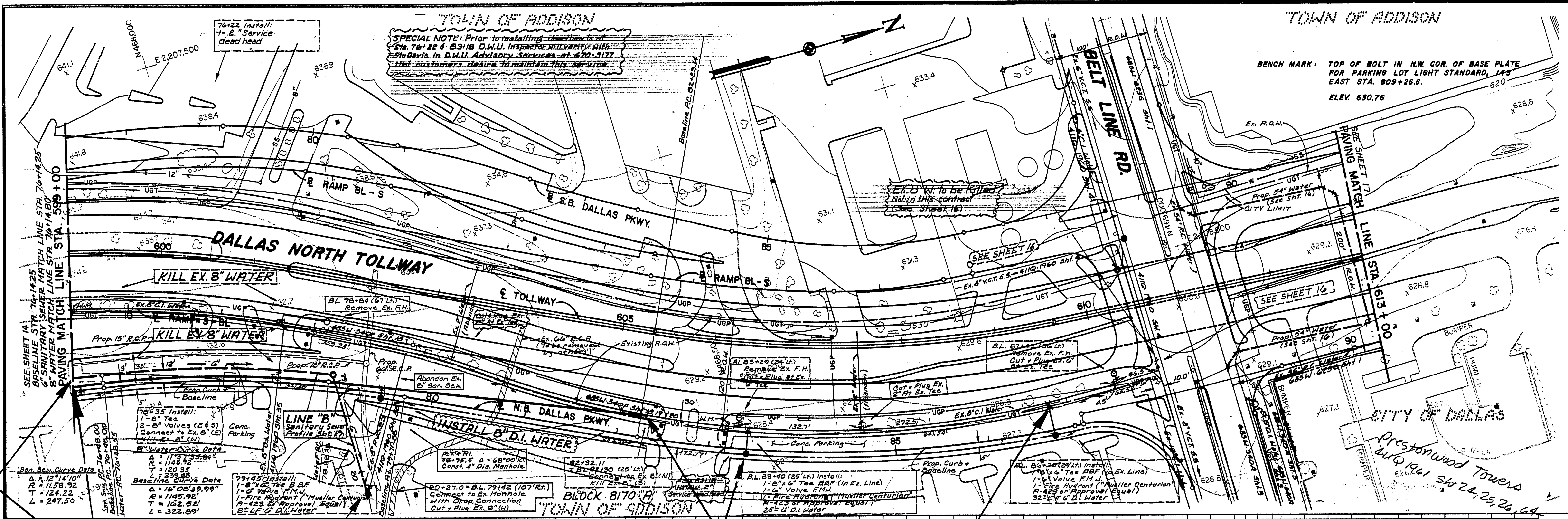


SPECIAL NOTE: Prior to installing discharges at Sta. 76+22 & 83+18 D.W.U. Inspector will verify with Studies in R.W.U. Advisory Services at 670-3177 that customers desire to maintain this service.

BENCH MARK: TOP OF BOLT IN N.W. COR. OF BASE PLATE FOR PARKING LOT LIGHT STANDARD, 145 EAST STA. 809+26.6 ELEV. 630.76



6.7 LF. 8" D.I. Water, Class 52

HYDRA METER
13. 70x22 (8.5' L.) 2" BRASS
14. 6x15 (2.5' L.) UNDERGROUND

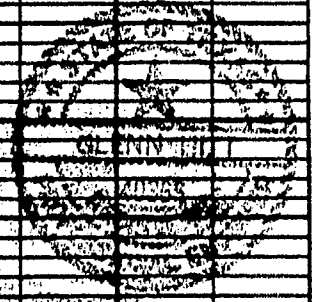
NOTES:
1. All Water Mains Shall Be Ductile Iron,
Class 52 With Polyethylene Wrap on
Pipe and Fittings.

Designed by: [Signature]
TURNER GOLLIE & BRADEN, INC. Date: 9-22-83

Design Approved, Engineer Relocations: [Signature] 6-24-83

C.W.U. R.C.W. Approval

C.W.U. Contract No. 83-611E, 83-612E



SHEET 15

| | | | | | |
|---|----------|-----------|-------------------|------------------|-------------------|
| NO. | | REVISION | | BY | DATE |
| TEXAS TURNPIKE AUTHORITY DALLAS NORTH TOLLWAY WATER & SANITARY SEWER RELOCATIONS PAVING STA. 599+00 TO STA. 613+00 DALLAS WATER UTILITIES CITY OF DALLAS, TEXAS | | | | | |
| Turner Gollie & Braden, Inc. Consulting Engineers | | | | | SECTION XI |
| DESIGN | DRAWN | DATE | SCALE | NOTES | FILE NO. |
| J.G.H. | T.C.B.B. | JUNE 1983 | 1"=50'H 1"=5'V | T.C.B.B. INC. | 411-Q 1909A |