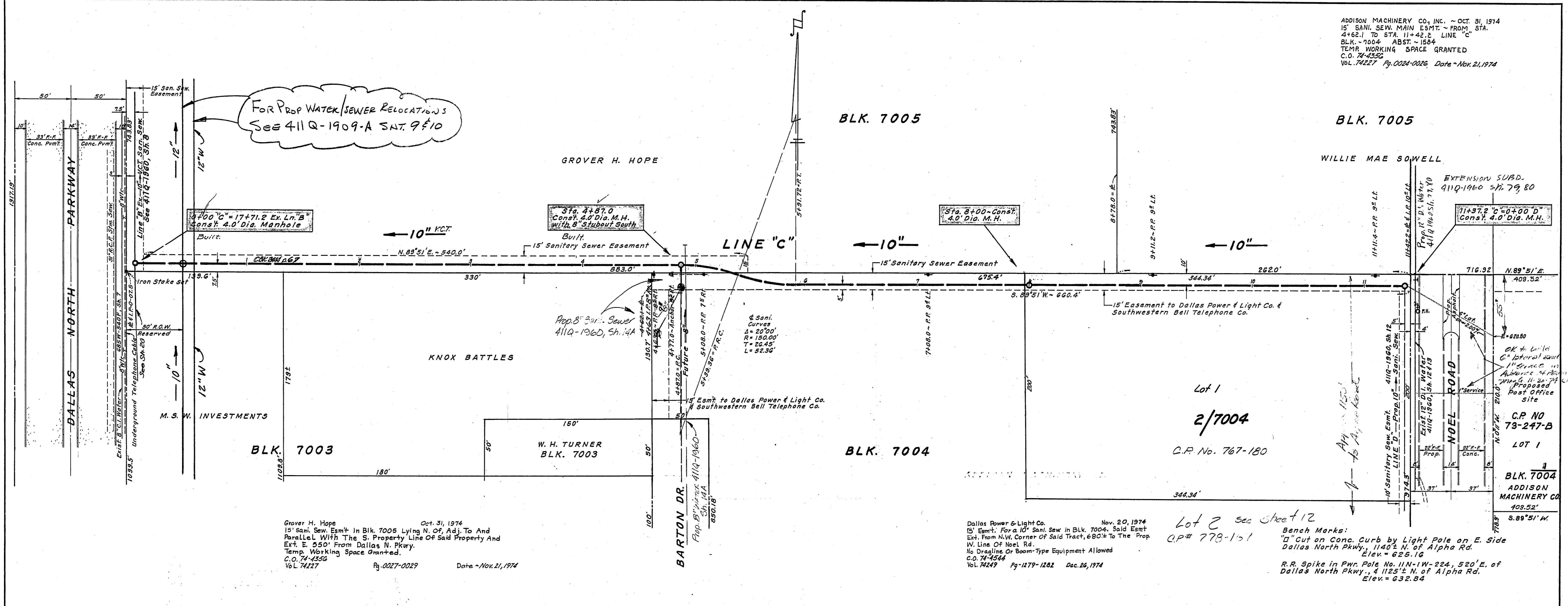


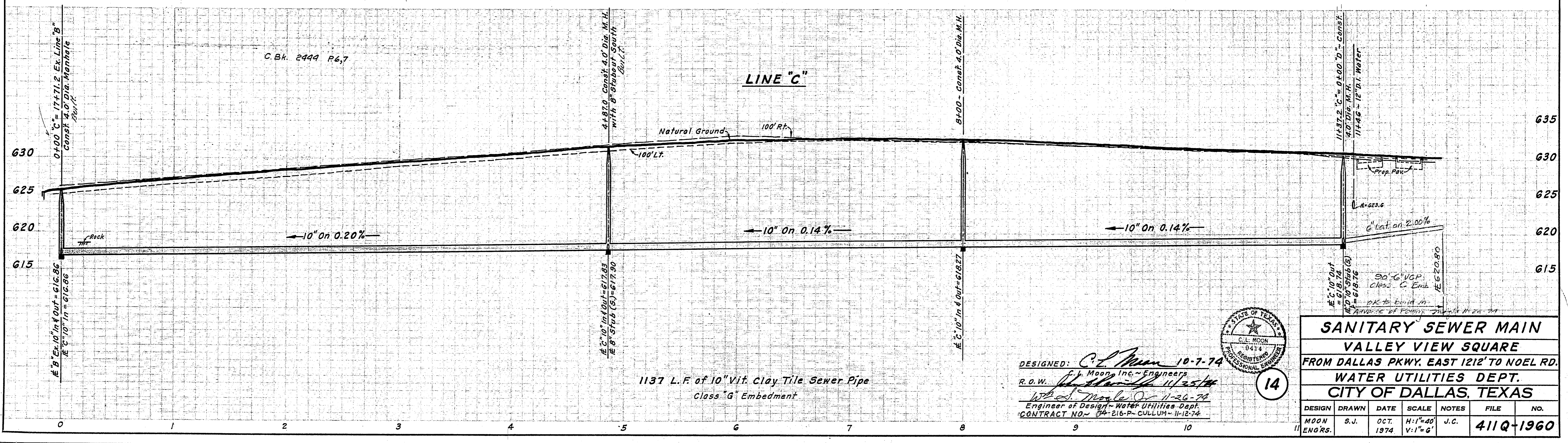
ADDISON MACHINERY CO., INC. - OCT. 31, 1974
 15' SANI. SEW. MAIN ESM'T. FROM STA. 4+62.1 TO STA. 11+42.2 LINE "C"
 BLK. 7004 ABST. - 1504
 TEMP. WORKING SPACE GRANTED
 C.O. 74-4352
 Vol. 74227 Pg. 0024-0026 Date - Nov. 21, 1974



Grover H. Hope Oct. 31, 1974
 15' Sani. Sew. Esm't in Blk. 7005 Lying N. of, Adj. To And Parallel With The S. Property Line Of Said Property And Ext. E. 550' From Dallas N. Pkwy.
 Temp. Working Space Granted.
 C.O. 74-4352
 Vol. 74227 Pg. 0027-0029 Date - Nov. 21, 1974

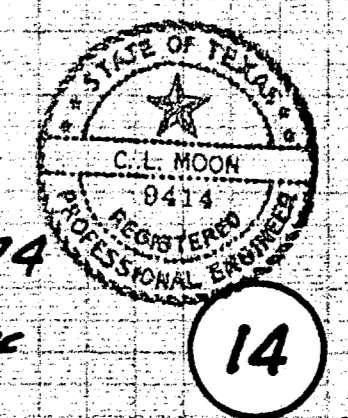
Dallas Power & Light Co. Nov. 20, 1974
 15' Esm't. For a 10" Sani. Sew. in Blk. 7004. Said Esm't Ext. From N.W. Corner Of Said Tract, 680' To The Prop. W. Line Of Noel Rd.
 No Dragline Or Boom-Type Equipment Allowed
 C.O. 74-4544
 Vol. 74249 Pg. 1279-1282 Dec. 26, 1974

Lot 2 See sheet 12
 CP# 773-151
 Bench Marks:
 "D" Cut on Conc. Curb by Light Pole on E. Side Dallas North Pkwy., 1140' N. of Alpha Rd. Elev. = 625.16
 R.R. Spike in Pwr. Pole No. 11N-1W-224, 520' E. of Dallas North Pkwy., 4 1/2' N. of Alpha Rd. Elev. = 632.84



1137 L.F. of 10" Vit. Clay Tile Sewer Pipe
 Class "G" Embedment

DESIGNED: C.L. Moon 10-7-74
 F.L. Moon, Inc. - Engineers
 R.O.W. [Signature] 11/25/74
 W.S. [Signature] 11-26-74
 Engineer of Design - Water Utilities Dept.
 CONTRACT NO. 74-216-P-CULLUM-11-12-74



SANITARY SEWER MAIN					
VALLEY VIEW SQUARE					
FROM DALLAS PKWY. EAST 1212' TO NOEL RD.					
WATER UTILITIES DEPT.					
CITY OF DALLAS, TEXAS					
DESIGN	DRAWN	DATE	SCALE	NOTES	FILE NO.
MOON	S.J.	OCT. 1974	H:1"=40' V:1"=6'	J.C.	411Q-1960
ENGRS.					