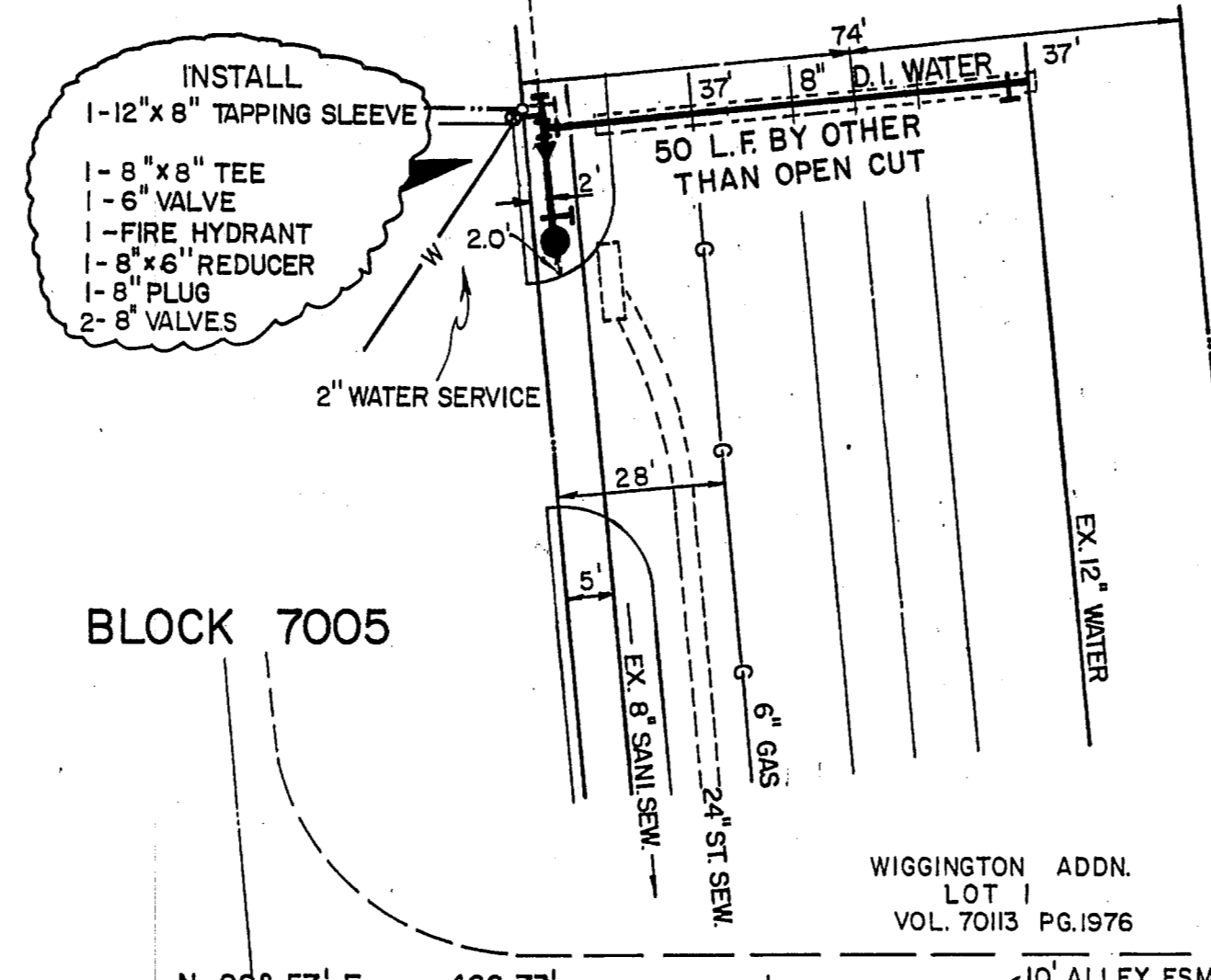


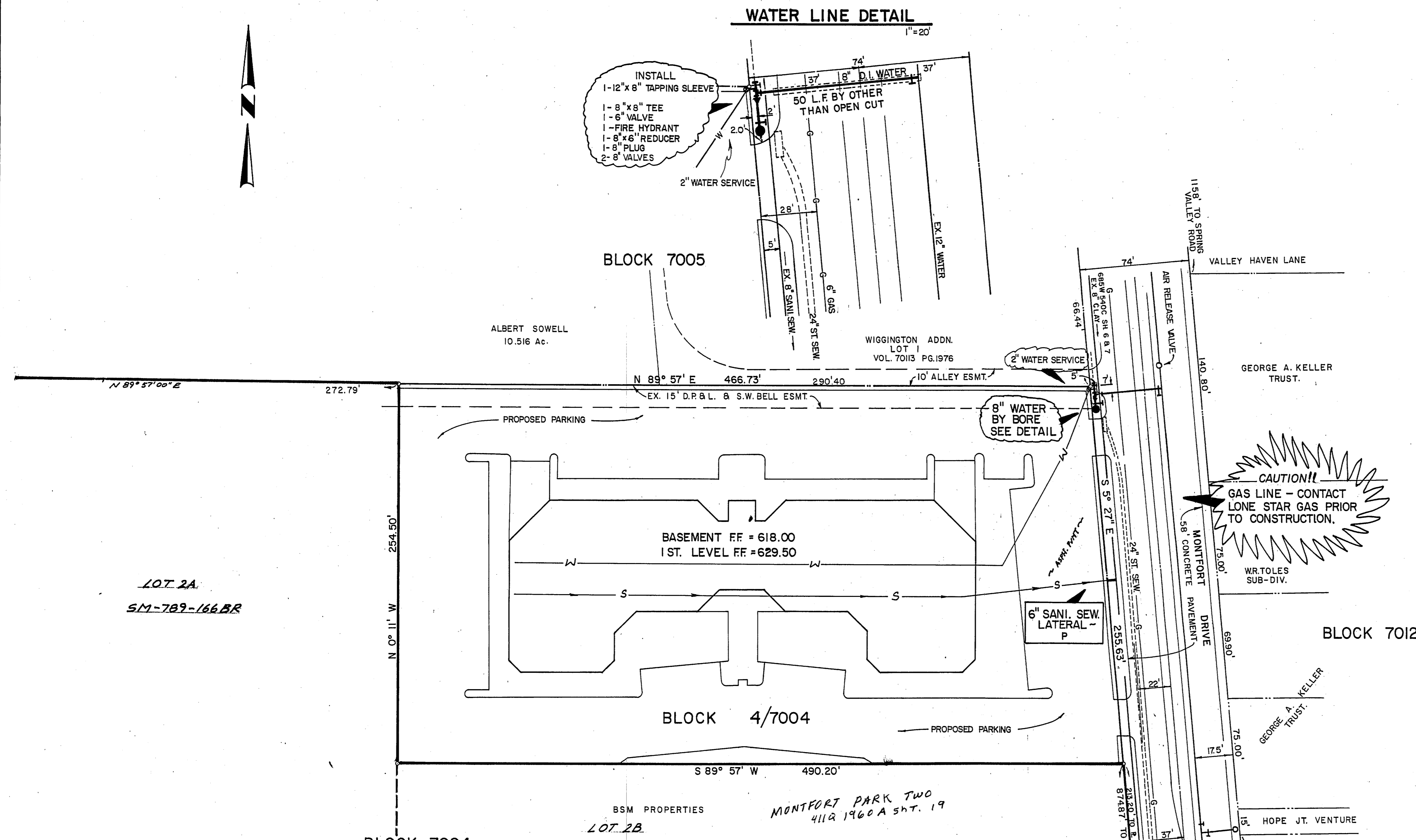


WATER LINE DETAIL
1" = 20'



NOTES

1. ALL WATER MAINS SHALL BE DUCTILE IRON CLASS 51 WATER PIPE WITH POLYETHYLENE WRAP ON PIPE, FITTINGS & FIRE HYDRANT BASES.
2. ALTERNATE - ALL 6" & 8" WATER MAINS SHALL BE R.V.C. CLASS 200 WATER PIPE EXCEPT IN FILL AREAS & MAJOR & SECONDARY THROGGHPIRES AS FOLLOWS: MONTFORT DRIVE FOR R.V.C. SERVICE TAPS & CARGEN, TAPPING SADDLE SHALL BE USED.
3. ALL WATER MAINS SHALL HAVE A MINIMUM COVER BELOW FINISHED GRADE AS FOLLOWS: 6" & 8" - 48", 12" - 60", OR AS REQUIRED TO CLEAR OTHER UTILITIES.
4. ALL SANITARY SEWER LATERALS SHALL BE LOCATED AS SHOWN, SIZED & REFERENCED AS FOLLOWS: P = 6"
5. EXTEND WATER SERVICES AS SHOWN ON PLANS.
6. SANITARY SEWER LATERALS TO EXISTING MAIN SHALL BE BY CONTRACTOR.
7. ALL WATER SERVICES SHALL BE LOCATED AS SHOWN.

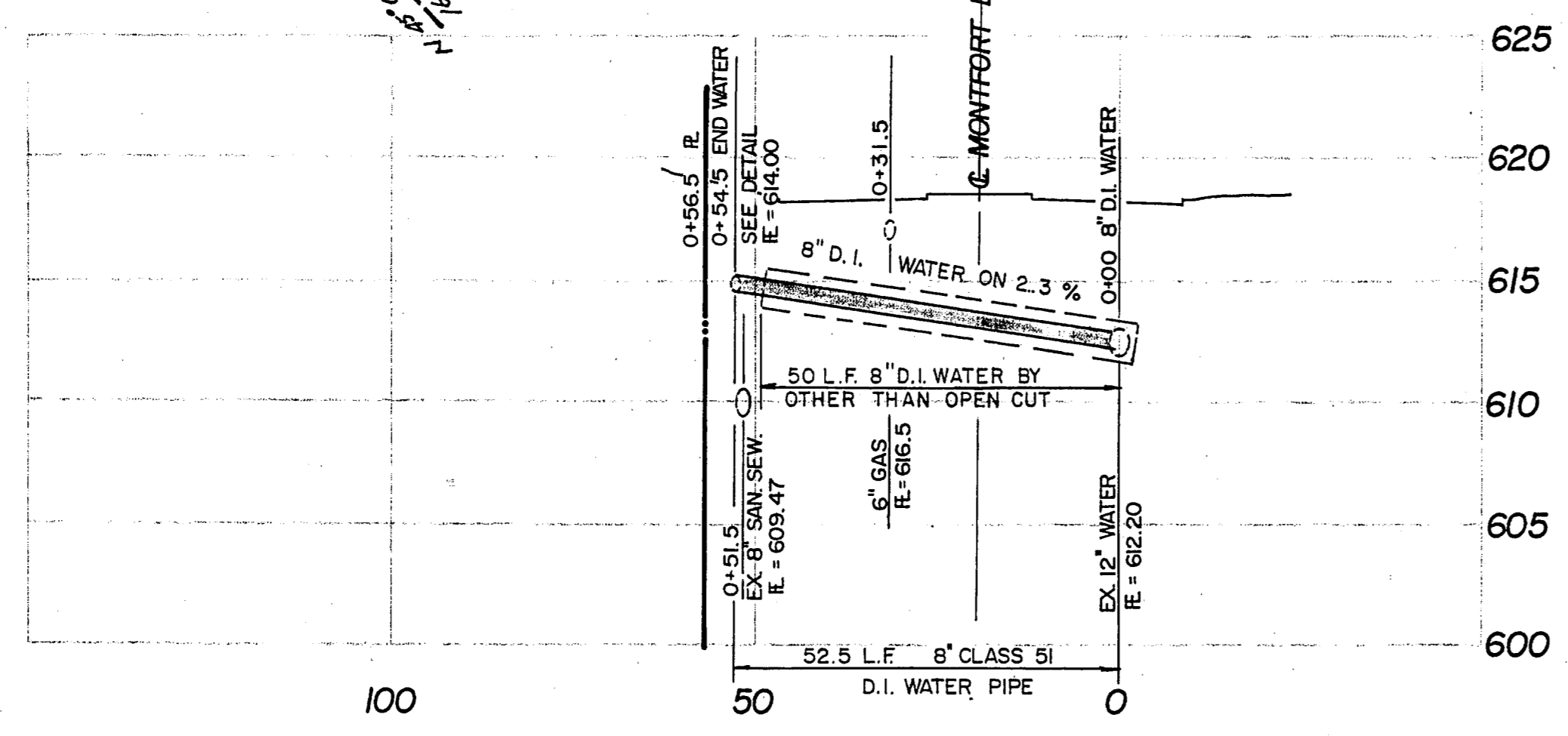


LOT 2A
SM-789-166BR

BLOCK 7004

BSM PROPERTIES
LOT 2B
SM-789-166BR
B.M.: STANDARD W.D.B.M. ON N.E. CORNER OF OVERPASS AT MONTFORT DR. AND L.B.J. FWY. ELEV. 627.94

MONTFORT PARK TWO
4112 1960A SH. T. 19
B.M.: "D" IN CENTER OF RADIUS N.W. CORNER OF ALPHA RD. AND MONTFORT DR. ELEV. 621.80



WATER LINE PROFILE
HORIZ. = 1" = 20' VERT. = 1" = 6'



DESIGNED BY *Jack R. Davis* DATE 6-26-79
BROCKETTE, DAVIS, DRAKE INC.
R.O.W. APPROVED BY *J.L. Teal* DATE 7-24-79
ENGINEER OF DESIGN *CAUSEY* WATER-UTILITIES DEPT. DATE 7-24-79
CONTRACT NO. 79-629PT 79-430P-Associated Energy Services Co.-July 19, 1979

WATER & SEWER PLAN						
MONTFORT PARK ONE						
CITY BLOCK 7004						
DALLAS WATER UTILITIES DEPARTMENT						
CITY OF DALLAS						
DESIGN	DRAWN	DATE	SCALE	NOTES	FILE	NO.
B.D.D.	B.N.	6-14-79	1" = 40'		411Q	1960