

GEORGE E. JONES
NEVA CULPEPPER
ROBERT C. WILLIAMS
3-12-57 6.21 Ac.

KATHLEEN FROSSARD
9-25-56 10 Ac.

ARTHUR L. KRAMER, JR. et al
CHANNEL EASEMENT
Sta. 195+00 to 202+68 BLK. 8172
TEMP. WORKING SPACE GRANTED
DATE OF INSTRUMENT - 12-6-65
C.O. 65-6719
COUNTY RECORDS
Vol. - 727
Pg. - 1700
DATE - 1-3-66

BLK.
8172

BLK.
8221

J.W. BOURLAND, JR.
SAN SEWER CHANNEL EASEMENT
Sta. 203+68 To Sta. 214+348
BLK. 8221
TEMP. WORKING SPACE GRANTED
DATE OF INSTRUMENT - 1-11-66
C.O. - 66-411
COUNTY RECORDS:
Vol. - 749
Page - 1535
DATE - 2-2-66

GILBERT CUELLAR
CHANNEL EASEMENT
Sta. 183+50 to Sta. 194+70
BLK. 8172
TEMP. WORKING SPACE GRANTED
DATE OF INSTRUMENT - 12-6-65
C.O. - 66-78
COUNTY RECORDS:
Vol. - 737
Page - 2037
DATE - 1-12-66

PI 1941834
x 33° 33' 19" R
Use Bevel Pipe
R = 240'
L = 121.36
L = 224.73

EX 48" RC. SEWER -
SEE 411Q 1760 SH. 44
(CONTRACT 83-146)

NOTE:
GAS COMPANY HAS
BEEN NOTIFIED TO
CLEAR PROPOSED
SANIT. SEWER MAIN

PI 201464
x 20° 13' 19" R
R = 400'
L = 70.71
L = 135.98

PI 1971864
x 36° 21' 30" L
R = 400'
L = 131.35
L = 253.83

JAMES MASHMAN
12-19-55 14.96 Ac.
Kernick B. Moore
Channel Easement
Sta. 189+38.5 to 202+68
Temp. Working Space Granted
Excess rock from construction
at the dam at sta. 189+00 shall
be placed between west end
of dam and bank of creek to
retard erosion.
Date of Instrument 12-2-65
C.O. - 65-6719
County Records:
Vol. - 727
Page - 1706
Date - 1-3-66

Rock Creek Apts
411Q 1951 Sh. 57

Prop. 42"
Sew. 411Q 1760 Sh. 44

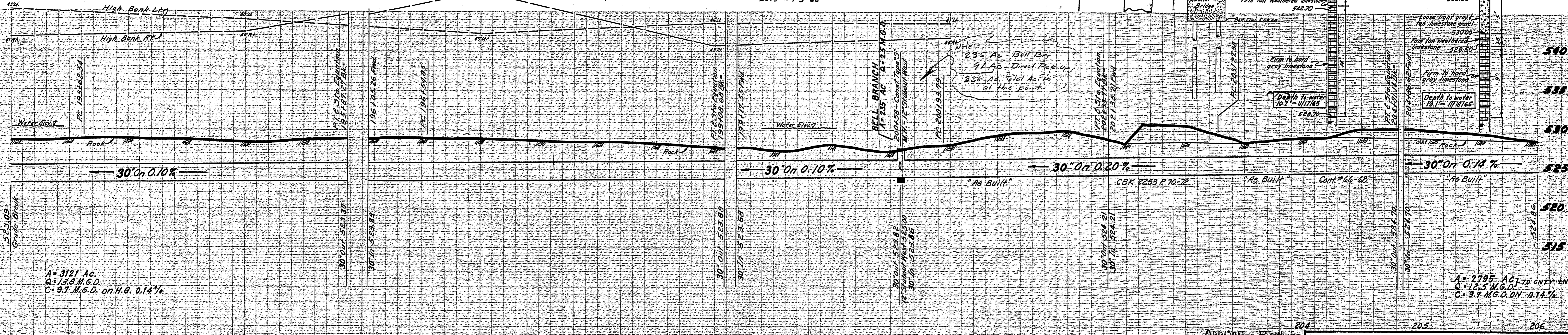
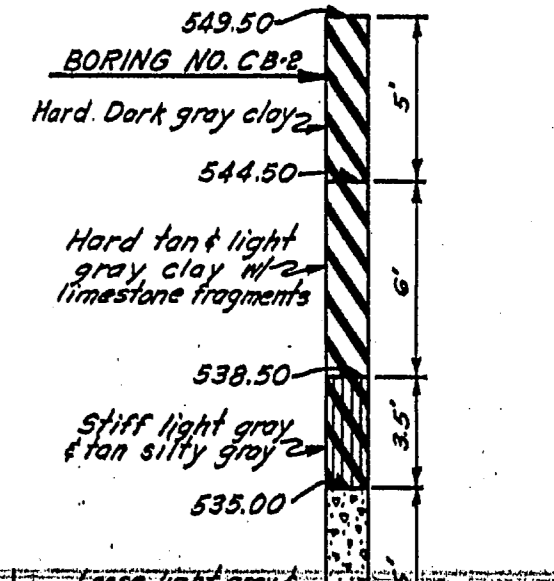
Mrs. Virginia B. Hendrick 1/3 Int
Dr. J.W. Bourland Jr. 1/3 Int
John B. Bourland 1/3 Int
96.88 Ac.

PI 2041073
x 36° 42' 30" L
Use Bevel Pipe
R = 240'
L = 153.62
L = 153.76

SECTION A-A

SECTION B-B

BLK.
8221



1266 LIN. FT. 30" REINF. CONC. SEWER PIPE, CLASS III WALL 12.75% LIMESTONE AGGREGATE
ALL ENCASEMENT "C"
BACKFILL WITH CONC. FLUSH WITH ROCK LINE IN CREEK
AS PER APPURT. 414D-2

DESIGNED BY: GADDDY & LOVEN
DATE: 11-10-65
APPROVED BY: [Signature]
DATE: 12-20-65
ENGINEER OF DESIGN: GADDDY & LOVEN
CITY CONT. NO. 66-68



TRUNK SANITARY SEWER					
WHITE ROCK CREEK					
SECTION IV					
DALLAS CITY WATERWORKS					
CITY OF DALLAS, TEXAS					
DESIGN	DRAWN	DATE	SCALE	NOTES	FILE NO.
GADDDY & LOVEN	NOR	1960	Hor. 1"=40' Vert. 1"=6'	GADDDY & LOVEN	411Q-1260

B. M. ST. WATER DEPT. B. M. ON WALKWAY
AT N.W. COR. OF CONC. BRIDGE ON
BELT LINE RD. OVER WHITE ROCK CR.
ELEV. 563.12