

DOOR SCHEDULE

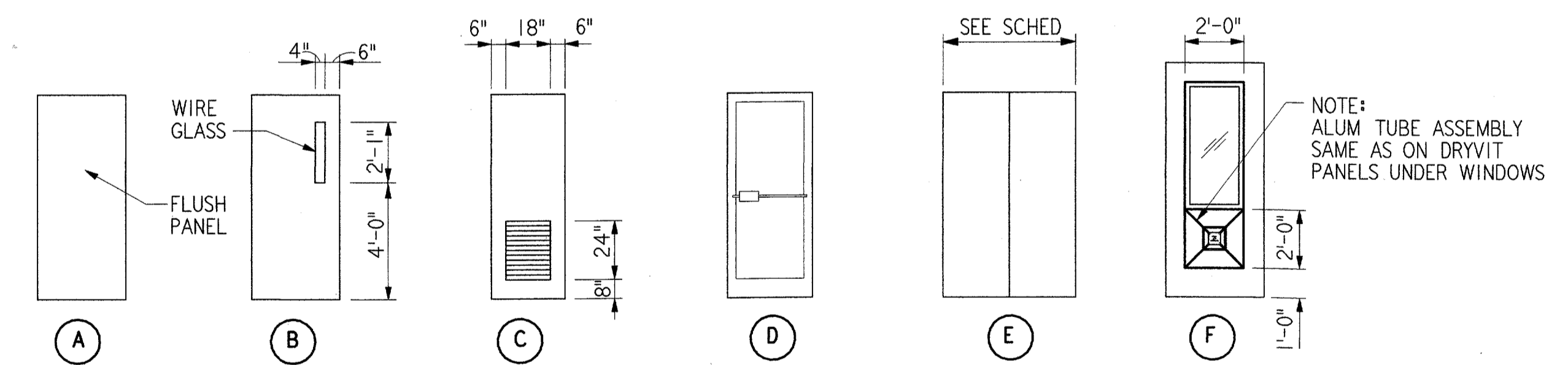
DOOR NO.	DOOR SIZE	HDWE		DOOR			FRAME				LABEL/RATING	SIGN	REMARKS
		SET	KEYSIDE	TYPE	MAT'L	FIN.	MAT'L	FIN.	DET NO.	SHT NO.			
101	3'-0" x 7'-0"	16	-	B	HM	PT-8	HM	PT-8	2,6	A20	B-1.5HR	YES	
102	3'-0" x 7'-0"	17	-	A	HM/INSUL	PT-8	HM	PT-8	3	A20	B-1.5HR	YES	
103	3'-0" x 7'-0"	19	GI	A	HM	PT-8	HM	PT-8	2,6	A20	B-1.5HR	YES	
104	3'-0" x 7'-0"	20	GI	A	HM	PT-8	HM	PT-8	1,5	A20	B-1.5HR	YES	
201	3'-0" x 7'-0"	19	-	A	HM	PT-8	HM	PT-8	2,6	A20	B-1.5HR	YES	
202	3'-0" x 7'-0"	18	-	A	HM	PT-8	HM	PT-8	2,6	A20	B-1.5HR	YES	
203	2'-2"-0" x 7'-0"	21	LI	E	HM	PT-8	HM	PT-8	2,6	A20	B-1.5HR	YES	
204	3'-0" x 3'-3"	23	LI	A	HM	PT-8	HM	PT-8	4,7	A20	-	YES	SPECIAL FRAME AND DOOR
301	3'-0" x 7'-0"	19	-	A	HM	PT-8	HM	PT-8	2,6	A20	B-1.5HR	YES	
302	3'-0" x 7'-0"	18	-	A	HM	PT-8	HM	PT-8	2,6	A20	B-1.5HR	YES	
303	2'-2"-0" x 7'-0"	21	MI	E	HM	PT-8	HM	PT-8	2,6	A20	B-1.5HR	YES	
401	3'-0" x 7'-0"	24	-	B	HM	PT-8	HM	PT-8	2,6	A20	B-1.5HR	YES	
402	3'-0" x 7'-0"	18	-	A	HM	PT-8	HM	PT-8	2,6	A20	B-1.5HR	YES	
403	2'-2"-0" x 7'-0"	21	TI	E	HM	PT-8	HM	PT-8	2,6	A20	B-1.5HR	YES	
501	3'-0" x 7'-0"	19	-	B	HM	PT-8	HM	PT-8	2,6	A20	B-1.5HR	YES	
502	3'-0" x 6'-8"	18	-	B	HM	PT-8	HM	PT-8	2,6	A20	B-1.5HR	YES	
503	2'-2"-0" x 6'-8"	21	J1	E	HM	PT-8	HM	PT-8	2,6	A20	B-1.5HR	YES	
504	3'-0" x 6'-8"	22	-	A	HM	PT-8	HM	PT-8	1,5	A20	-	YES	UNDERCUT DOOR 1"
601	3'-0" x 7'-0"	19	S2	A	HM	PT-8	HM	PT-8	2,6	A20	B-1.5HR	YES	
602	3'-0" x 7'-0"	18	-	A	HM	PT-8	HM	PT-8	2,6	A20	B-1.5HR	YES	
603	3'-0" x 7'-0"	19	-	A	HM	PT-8	HM	PT-8	2	A20	B-1.5HR	YES	
604	3'-0" x 7'-0"	19	-	A	HM	PT-8	HM	PT-8	2	A20	B-1.5HR	YES	
605	3'-0" x 7'-0"	19	-	A	HM	PT-8	HM	PT-8	2	A20	B-1.5HR	YES	
606	2'-0" x 7'-0"	19	-	A	HM	PT-8	HM	PT-8	2	A20	B-1.5HR	YES	
607	3'-0" x 3'-6"	23	-	A	HM/INSUL	PT-8	HM	PT-8	8	A20	-	NO	SPECIAL FRAME AND DOOR

GENERAL NOTE

1. REFERENCE SHEET A18 FOR COLOR SCHEDULE.

DOOR SCHEDULE

DOOR NO.	DOOR SIZE	HDWE		DOOR			FRAME				LABEL/RATING	SIGN	REMARKS
		SET	KEYSIDE	TYPE	MAT'L	FIN.	MAT'L	FIN.	DET NO.	SHT NO.			
101	3'-0" X 7'-10"	2	-	F	AL	PT-8	AL	PT-8	1,2,3	A21	-	NO	WITH METAL PANEL INSERT
102	3'-0" X 7'-10"	1	-	D	AL	PT-8	AL	PT-8	4,5	A21	-	NO	
103	3'-0" X 7'-0"	6	-	A	WD	S-1	HM	PT-8	4,5	A21	-	YES	
104	3'-0" X 7'-0"	9	105	A	WD	S-1	HM	PT-8	4,5	A21	-	YES	
105	3'-0" X 7'-0"	8	102	A	WD	S-1	HM	PT-8	4,5	A21	-	NO	
106	3'-0" X 7'-0"	9	105	A	WD	S-1	HM	PT-8	4,5	A21	-	YES	
107	3'-0" X 7'-0"	7	110	A	WD	S-1	HM	PT-8	4,5	A21	-	YES	
108	3'-0" X 7'-10"	1	-	F	AL	PT-8	HM	PT-8	1,2,3	A21	-	NO	WITH METAL PANEL INSERT
109	3'-0" X 7'-0"	13	122	A	WD	S-1	AL	PT-8	4,5	A21	E 3/4 HR	YES	
110	3'-0" X 7'-0"	6	-	A	WD	S-1	HM	PT-8	4,5	A21	-	YES	
111	3'-0" X 7'-0"	6	102	A	WD	S-1	HM	PT-8	4,5	A21	-	YES	
112	3'-0" X 7'-0"	10	113	A	WD	S-1	HM	PT-8	4,5,6	A21	-	YES	
113	(2) 2'-6" X 7'-10"	3	-	E	HM INSUL	PT-8	HM	PT-8	1,2,3	A21	-	NO	
114	3'-0" X 7'-10"	5	OUTSIDE	A	HM INSUL	PT-8	HM	PT-8	1,2,3	A21	E 3/4 HR	YES	
115	3'-0" X 7'-0"	10	113	A	WD	S-1	HM	PT-8	4,5,16	A21	E 3/4 HR	YES	
116	3'-0" X 7'-0"	10	113	A	WD	S-1	HM	PT-8	4,5,6	A21	-	YES	
117	3'-0" X 7'-0"	7	118	A	WD	S-1	HM	PT-8	4,5	A21	-	YES	
118	(2) 2'-6" X 7'-10"	3	-	E	HM INSUL	PT-8	HM	PT-8	1,2,3	A21	-	NO	
119	3'-0" X 7'-0"	7	118	A	WD	S-1	HM	PT-8	4,5	A21	-	YES	
120	3'-0" X 7'-0"	12	-	A	WD	S-1	HM	PT-8	4,5,17	A21	-	YES	UNDERCUT DOOR 1"
121	3'-0" X 7'-0"	6	118	A	WD	S-1	HM	PT-8	4,5	A21	-	YES	
122	3'-0" X 7'-0"	7	118	A	WD	S-1	HM	PT-8	4,5	A21	-	YES	
123	3'-0" X 7'-0"	12	-	A	WD	S-1	HM	PT-8	4,5,17	A21	-	YES	UNDERCUT DOOR 1"
124	3'-0" X 7'-0"	7	110	A	WD	S-1	HM	PT-8	4,5	A21	-	YES	
125	(2) 3'-0" X 7'-10"	3	-	E	HM INSUL	PT-8	HM	PT-8	13,14,15	A21	B-1.5 HR	NO	
126	3'-0" X 7'-0"	6	119	A	WD	S-1	HM	PT-8	7,8	A21	B-1.5 HR	YES	
127	3'-0" X 7'-0"	12	-	A	WD	S-1	HM	PT-8	11,12	A21	-	YES	UNDERCUT DOOR 1"
128	3'-0" X 7'-8"	5	OUTSIDE	A	HM INSUL	PT-8	HM	PT-8	9,10	A21	-	NO	
129	(2) 3'-0" X 7'-8"	4	OUTSIDE	E	HM INSUL	PT-8	HM	PT-8	9,10	A21	B-1.5 HR	NO	
130	3'-0" X 7'-0"	6	127	A	WD	S-1	HM	PT-8	11,12	A21	B-1.5 HR	YES	
131	3'-0" X 7'-0"	11	127	A	WD	S-1	HM	PT-8	11,12	A21	B-1.5 HR	YES	
132	2'-6" X 7'-0"	15	108	C	WD	S-1	HM	PT-8	4,5	A21	-	YES	



DOOR TYPES

- NO SCALE
- ALL DOORS ARE 1-3/4" THICK UNLESS OTHERWISE DETAILED.
 - FOR TYPICAL DOOR SIGN DETAIL, SEE SHEET A21.
 - FOR TYPICAL THRESHOLD TYPES, SEE DETAILS 3 & 6, SHEET A21.

A19

DEPARTMENT OF TRANSPORTATION FEDERAL AVIATION ADMINISTRATION SOUTHWEST REGION FORT WORTH, TEXAS LOW ACTIVITY LEVEL AIRPORT TRAFFIC CONTROL TOWER	
DOOR SCHEDULES AND DOOR TYPES ATCT/BASE-EG BUILDING	
ADDISON (ADDISON AIRPORT) TEXAS SUBMITTED: <i>James E. Harper</i> SYSTEMS ENGINEER, ANI-640	APPROVED: <i>Chris Collin</i> MANAGER TERMINAL PLATFORM, ANI-640
DESIGNED: GARY WILLIAMS REVIEWED: A. AMBARDEKAR ORIG. DFT.: S.R., E.D. FACILITY:	ISSUED BY: AIRWAY FACILITIES DIVISION DATE: 06-22-01 DRAWING NUMBER: ADS-ATCT- A19

James E. Harper
6/22/01

PARSONS
DALLAS, TX