

8

7

6

5

4

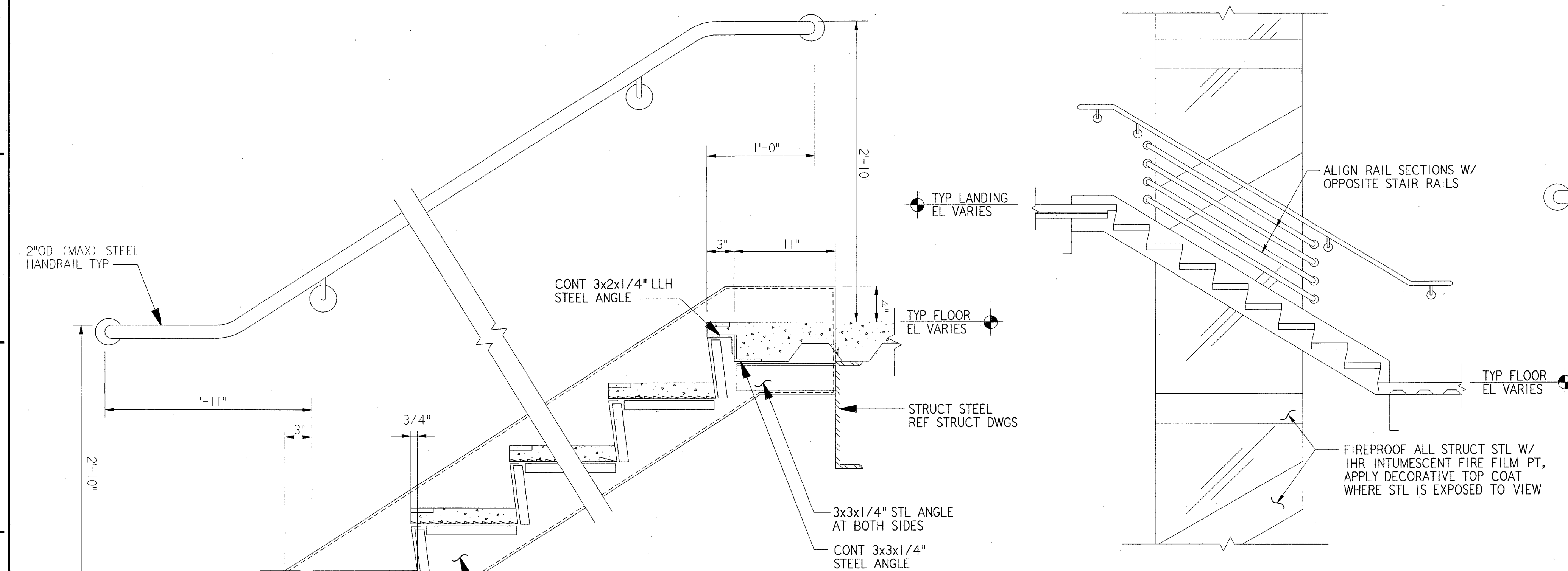
3

2

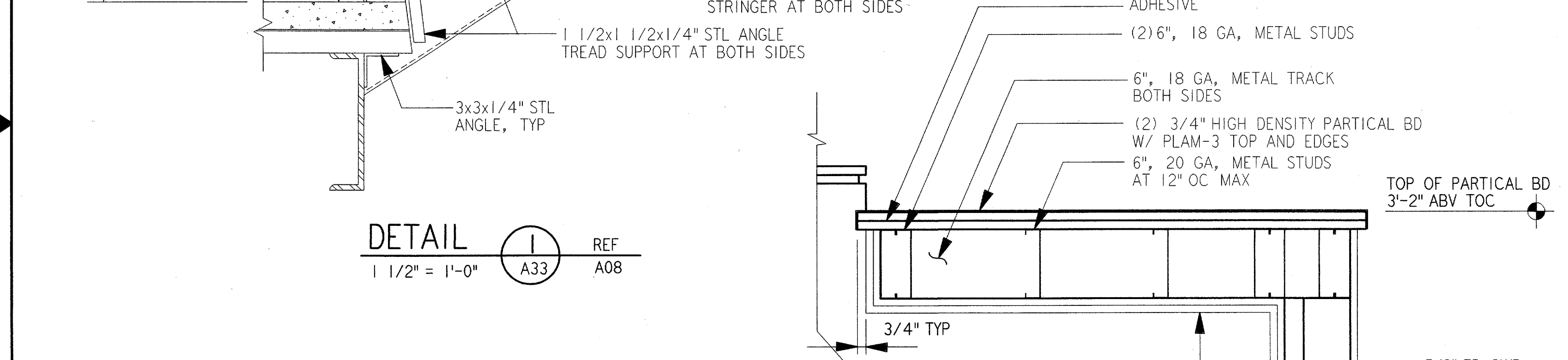
1

H
G
F
E
D
C
B
A

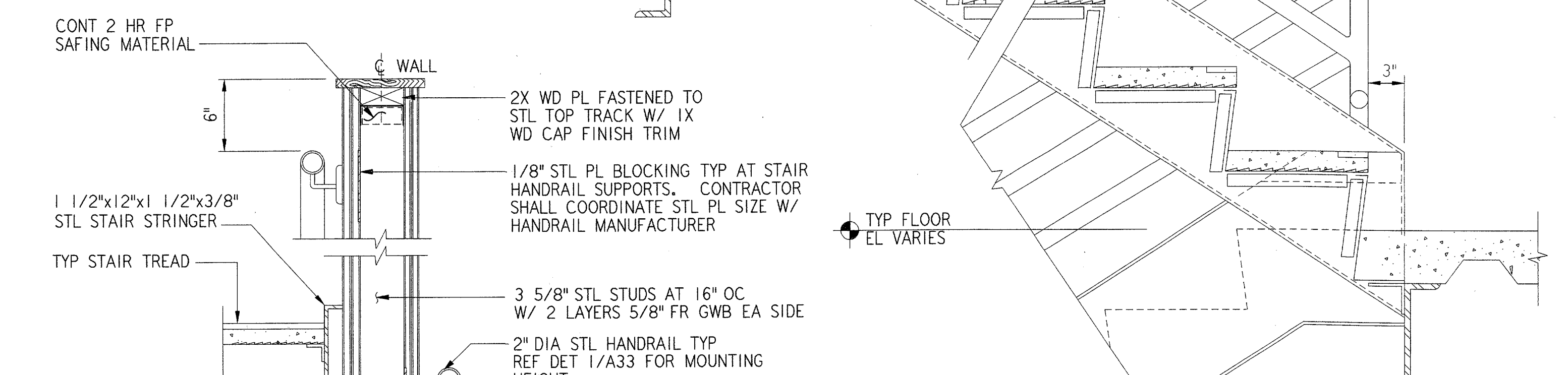
H
G
F
E
D
C
B
A



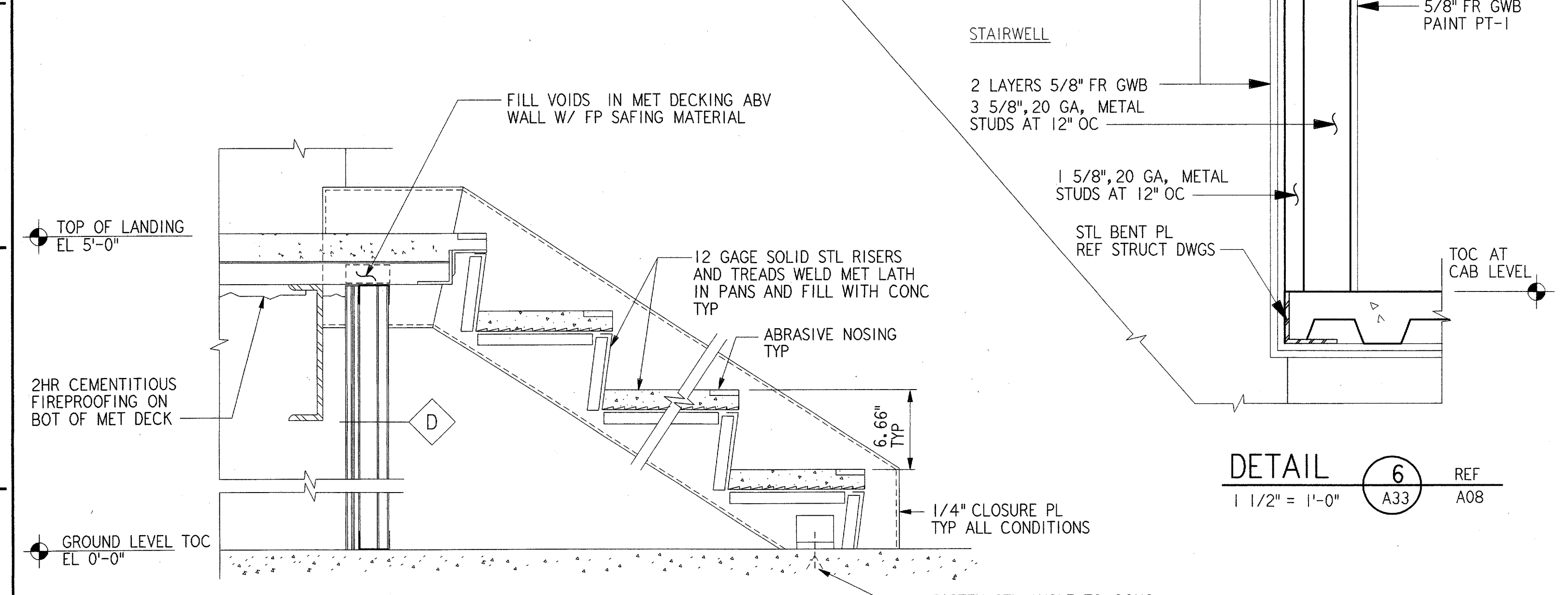
INTERIOR ELEVATION AT STAIR 2 REF A02
 1/2" = 1'-0"



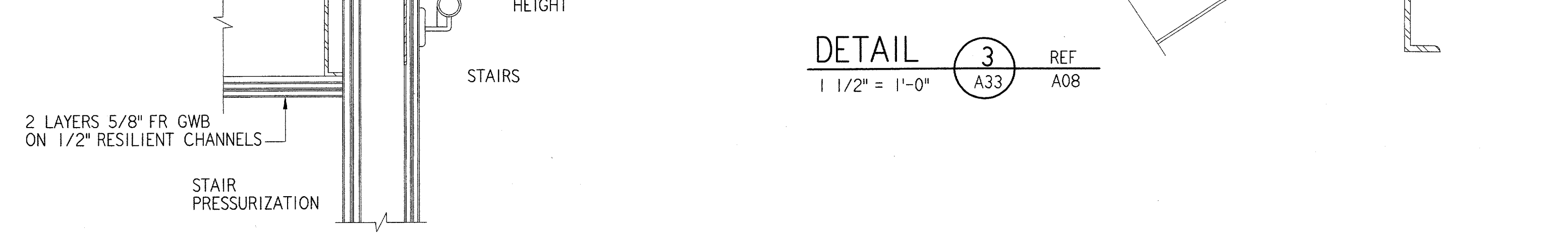
DETAIL 1 REF A08
 1 1/2" = 1'-0"



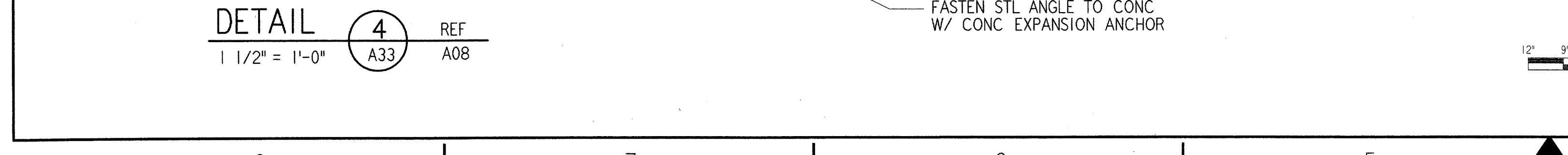
DETAIL 3 REF A08
 1 1/2" = 1'-0"



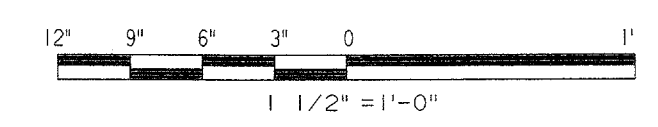
DETAIL 4 REF A08
 1 1/2" = 1'-0"



DETAIL 5 REF A09
 1 1/2" = 1'-0"



DETAIL 6 REF A08
 1 1/2" = 1'-0"



REV. DATE DESCRIPTION DFTG. CHECKED

DESIGNED BY GARY WILLIAMS

REVIEWED BY A. AMBARDEKAR

ORIG. DFT. S. RAJPREEJA

FACILITY:

REGISTERED ARCHITECT
 JAMES E. HARPER
 19725
 STATE OF TEXAS

6/22/01

PARSONS

DALLAS, TX

DEPARTMENT OF TRANSPORTATION
 FEDERAL AVIATION ADMINISTRATION
 SOUTHWEST REGION FORT WORTH, TEXAS

LOW ACTIVITY LEVEL
 AIRPORT TRAFFIC CONTROL TOWER

STAIR DETAILS
 ATCT

(ADDISON AIRPORT) TEXAS

ADDISON

SUBMITTED BY *James E. Harper*

APPROVED BY *Chris Callahan*

SYSTEMS ENGINEER, 640 MANAGER TERMINAL PLATFORM, ANI-640

ISSUED BY AIRWAY FACILITIES DIVISION

DATE: 06-22-01 DRAWING NUMBER: ADS-ATCT- A33

A33

FILENAME: ADSA033.ST