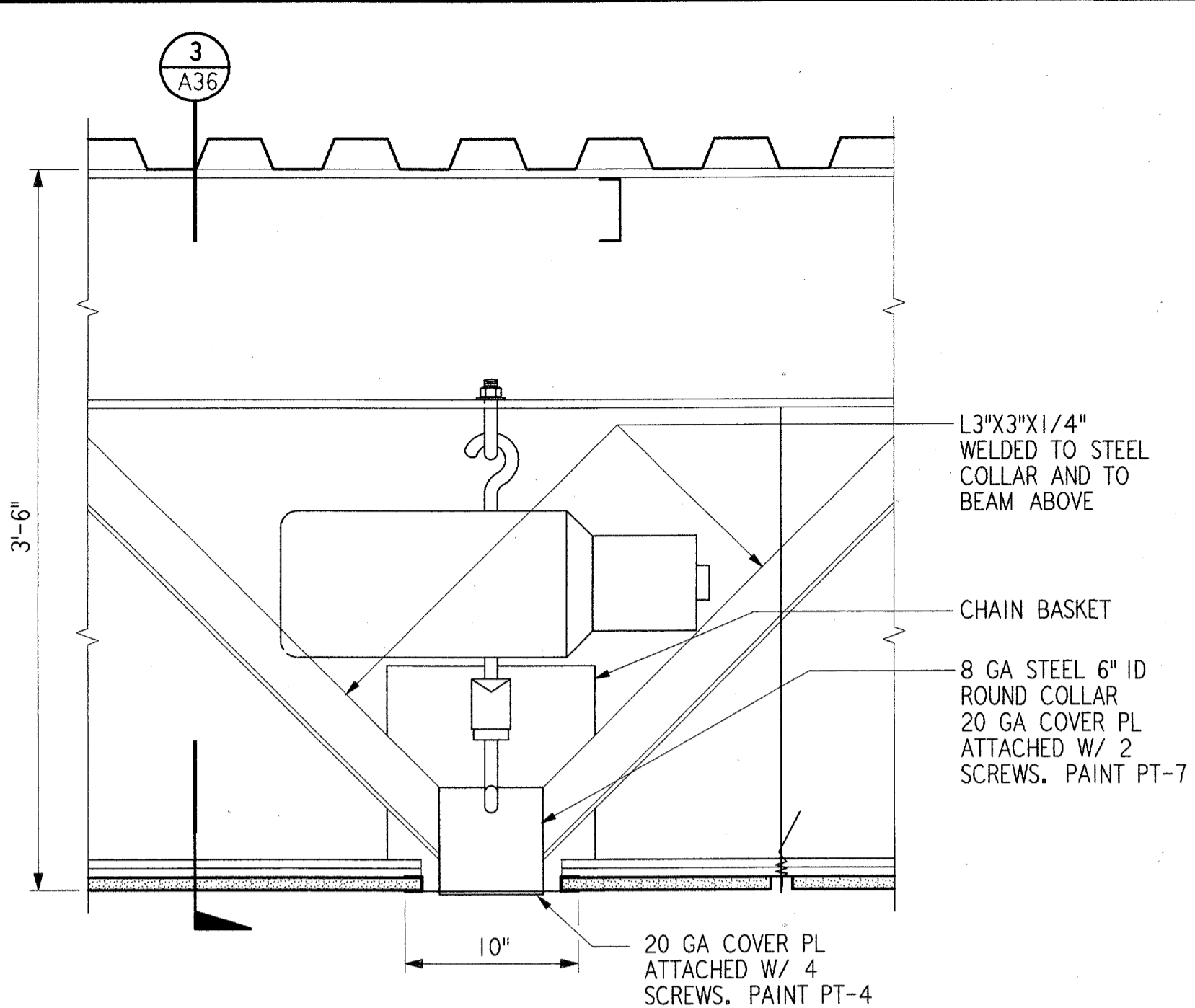
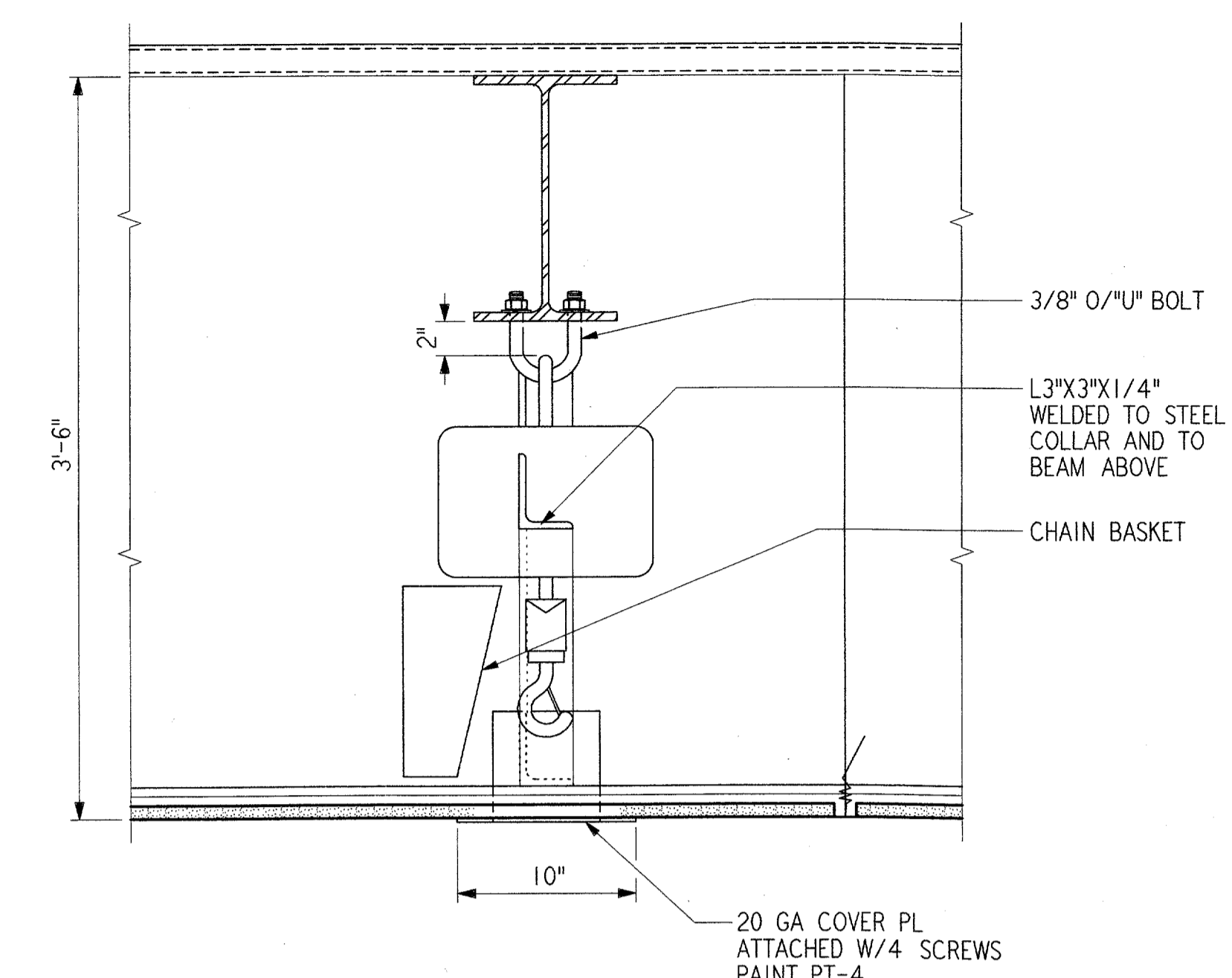


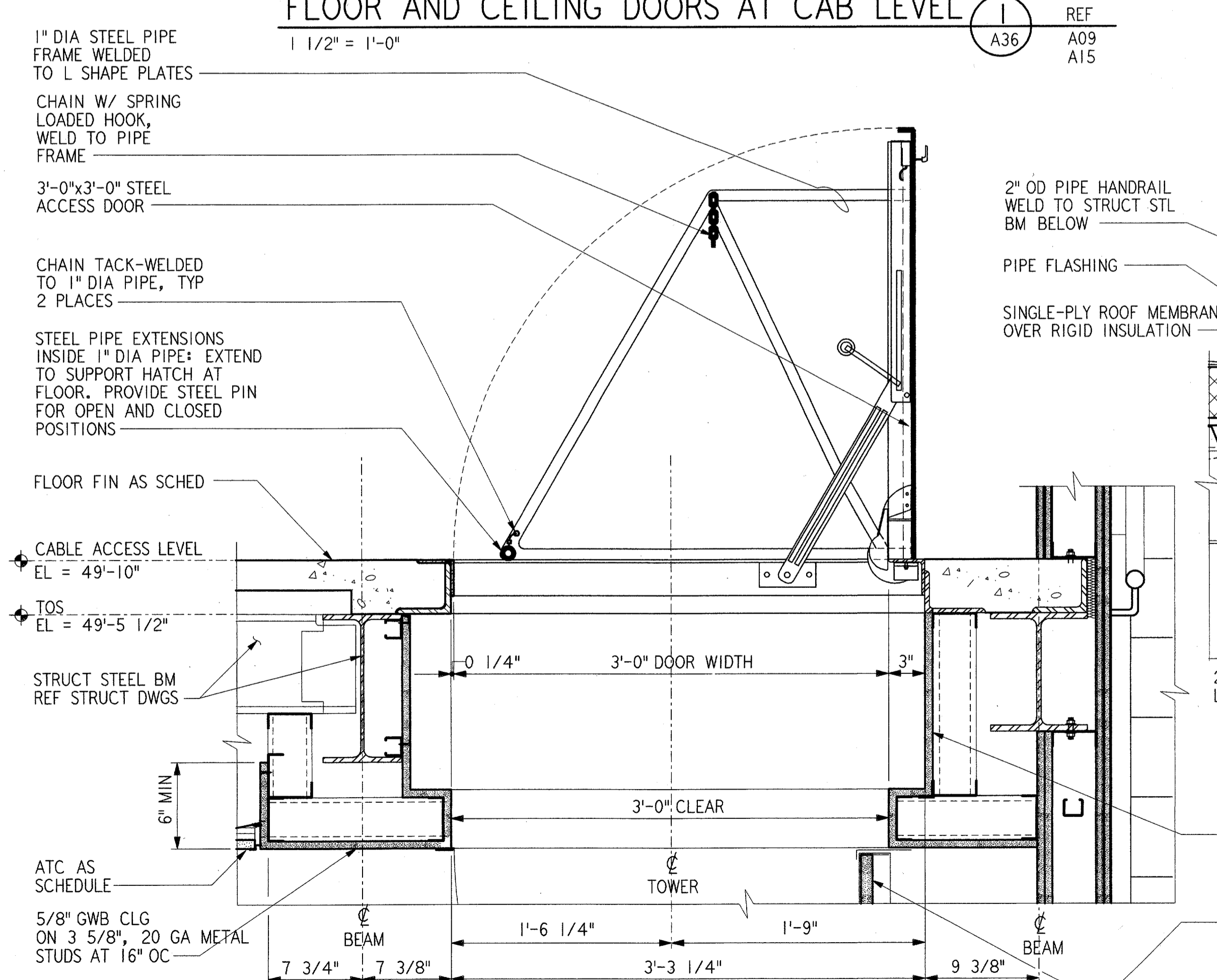
FLOOR AND CEILING DOORS AT CAB LEVEL 1 REF A36 A09 A15
1 1/2" = 1'-0"



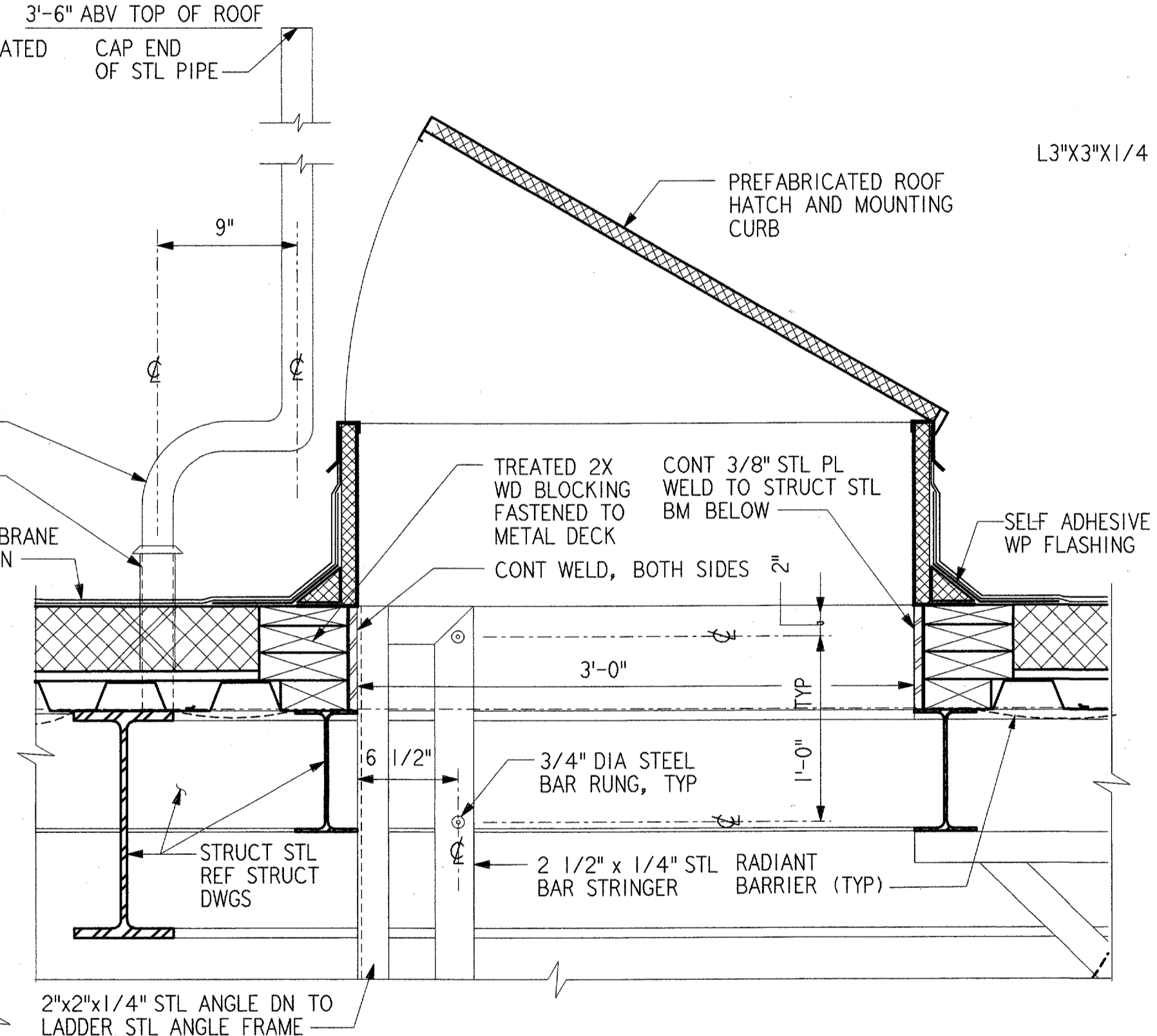
HOIST DETAIL 2 REF A36 A13
1 1/2" = 1'-0"



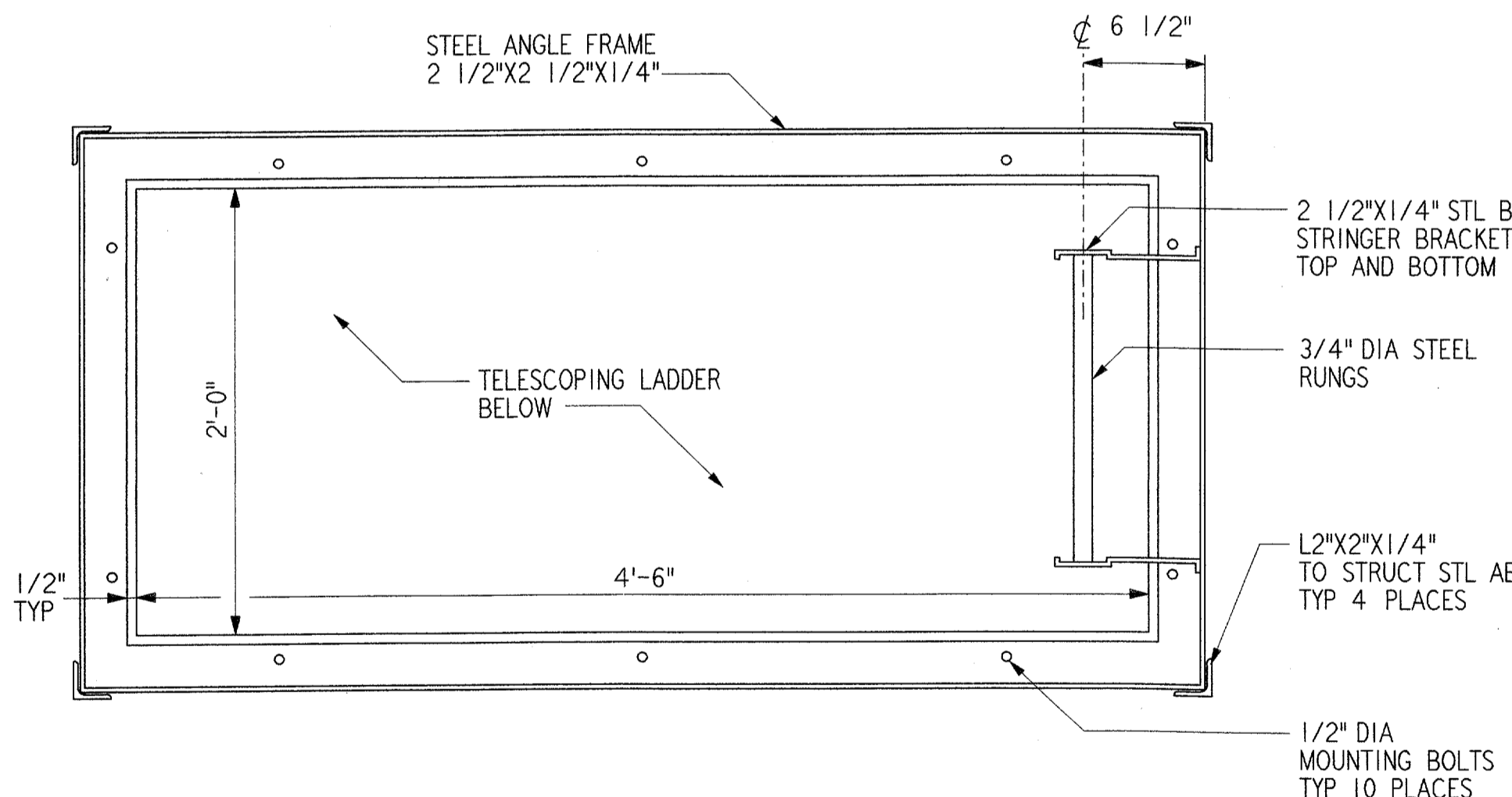
HOIST DETAIL 3 REF A36
1 1/2" = 1'-0"



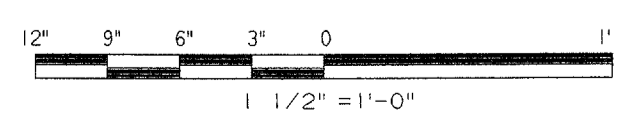
FLOOR AND CEILING DOORS AT CABLE ACCESS LEVEL 4 REF A36 A09
1 1/2" = 1'-0"



ROOF HATCH DETAIL 5 REF A36 A03 A13
1 1/2" = 1'-0"



ROOF ACCESS LADDER 6 REF A36 A15
1 1/2" = 1'-0"



REV.	DATE	DESCRIPTION	DFTG.	CHECKED
		DALLAS, TX		

DEPARTMENT OF TRANSPORTATION FEDERAL AVIATION ADMINISTRATION SOUTHWEST REGION FORT WORTH, TEXAS			
LOW ACTIVITY LEVEL AIRPORT TRAFFIC CONTROL TOWER			
EXTERIOR AND INTERIOR DETAILS ATCT			
ADDISON (ADDISON AIRPORT) TEXAS		ADDISON (ADDISON AIRPORT) TEXAS	
SUBMITTED BY: <i>James E. Harper</i> SYSTEMS ENGINEER (ANI-640)		APPROVED BY: <i>Will Call</i> MANAGER TERMINAL PLATFORM, ANI-640	
DESIGNED: GARY WILLIAMS REVIEWED: A. AMBARDEKAR ORIG. DFT.: S. RAJAPREKJA FACILITY:	ISSUED BY: AIRWAY FACILITIES DIVISION	DATE: 06-22-01 DRAWING NUMBER: ADS-ATCT- A36	FILENAME: ADS1A036-DIT