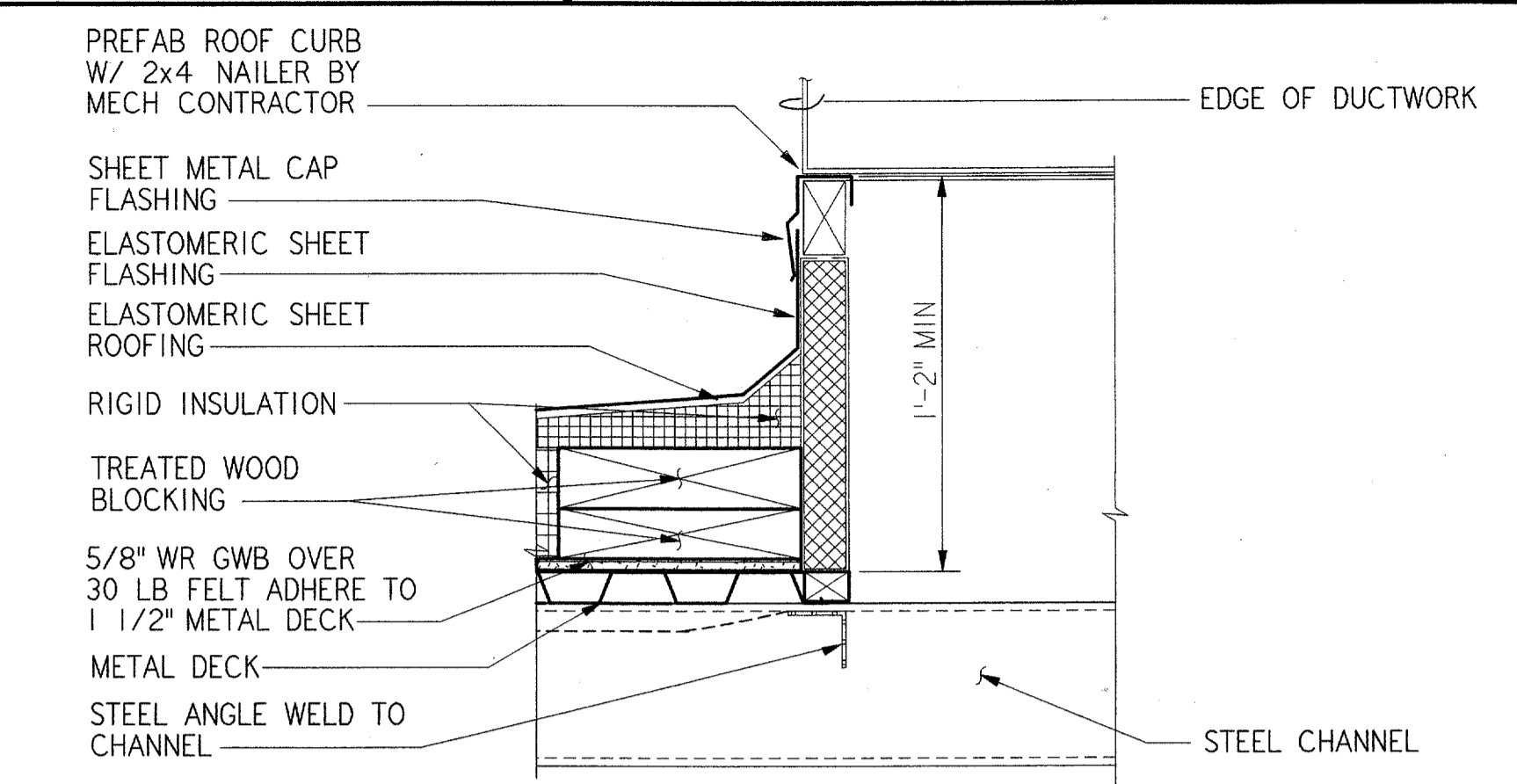
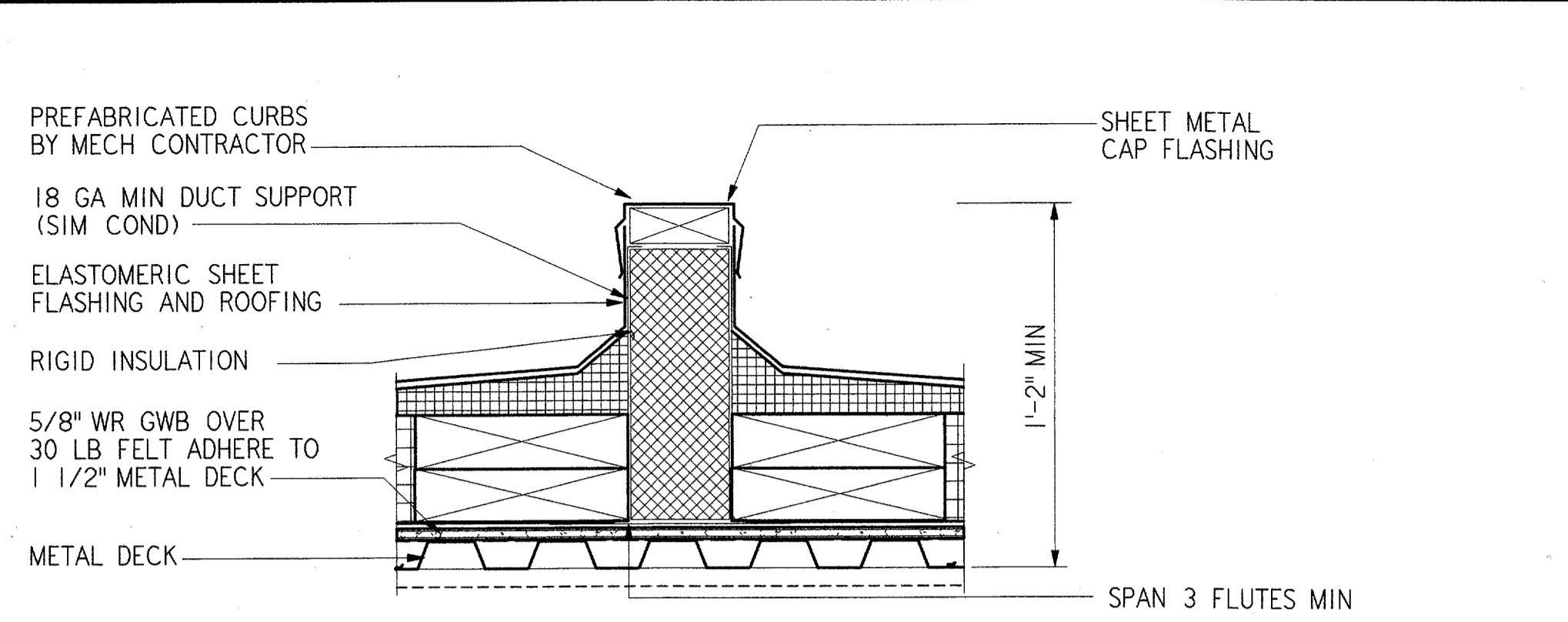


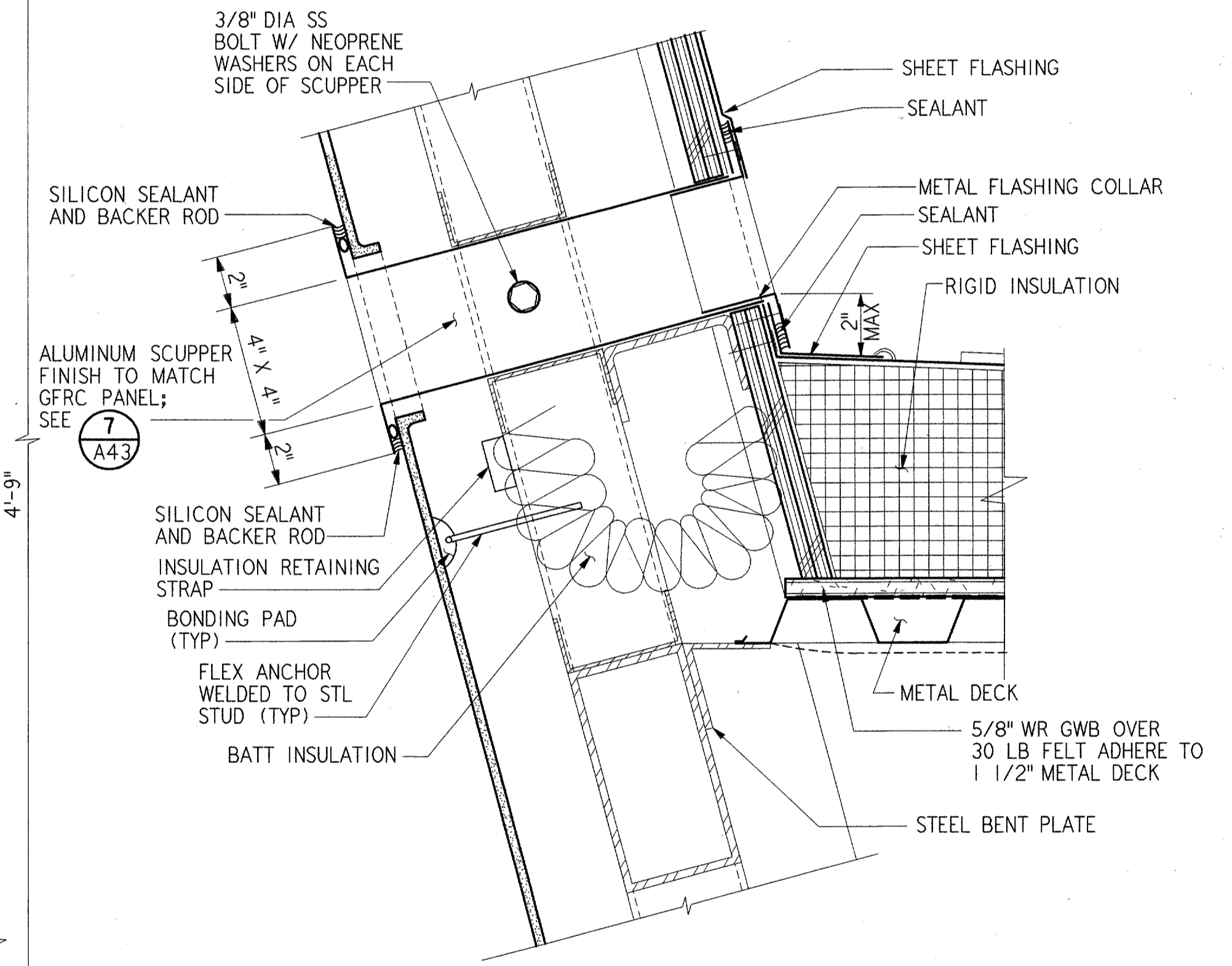
RACEWAY AND PARAPET DETAIL (1) REF A13
3" = 1'-0"



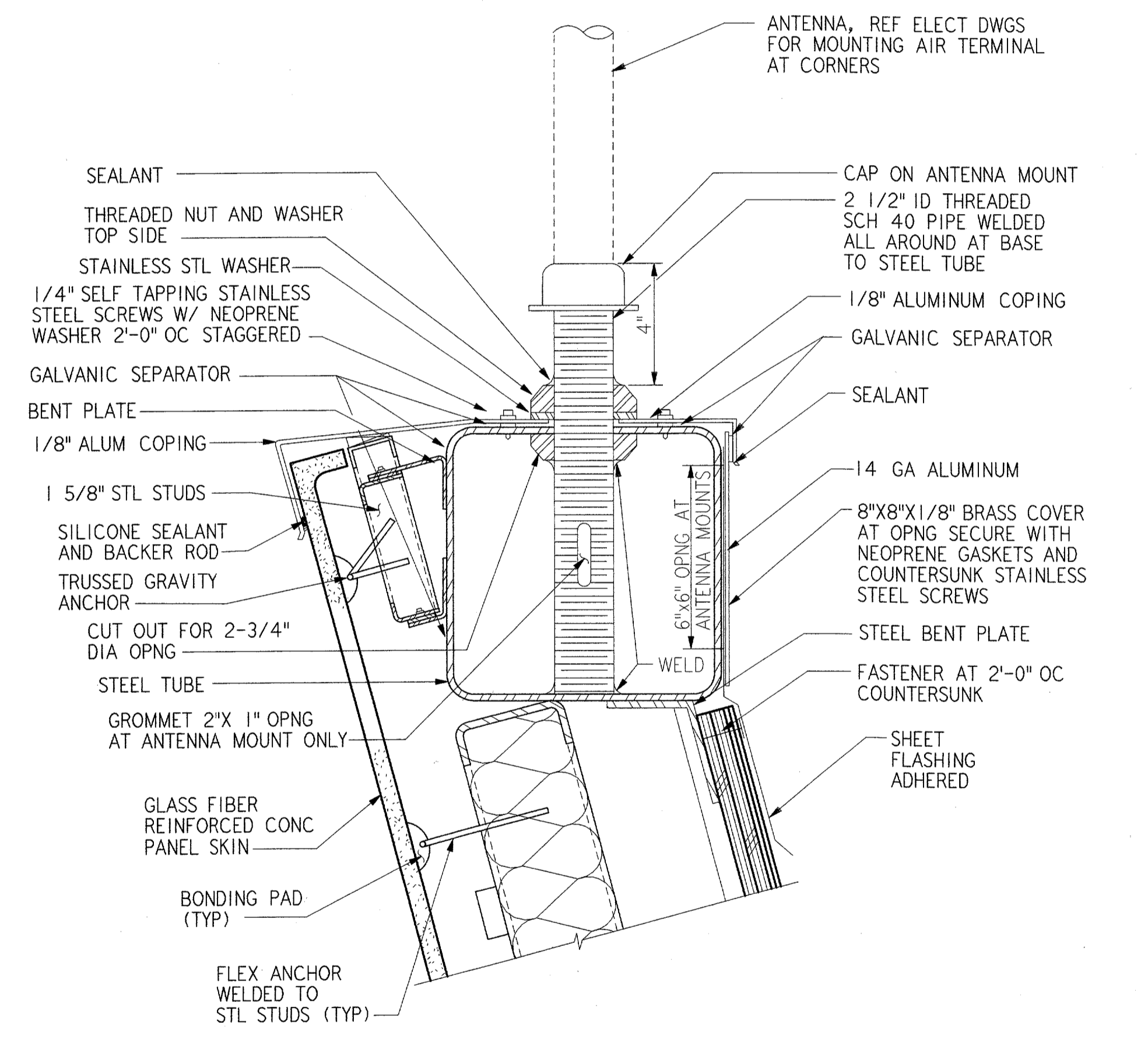
CURB SECTION AT OPNG DETAIL (2) REF A03
1 1/2" = 1'-0"



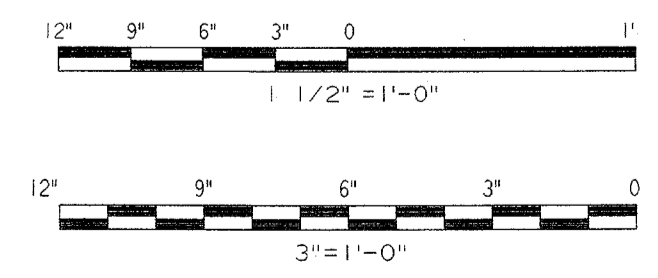
MECH EQUIPMENT AND DUCTWORK SUPPORT CURB DETAIL (3) REF A08
1 1/2" = 1'-0"



SCUPPER DETAIL (4) REF A03
3" = 1'-0"



RACEWAY DETAIL (5) REF A07 A09
3" = 1'-0"



DEPARTMENT OF TRANSPORTATION FEDERAL AVIATION ADMINISTRATION SOUTHWEST REGION FORT WORTH, TEXAS			
LOW ACTIVITY LEVEL AIRPORT TRAFFIC CONTROL TOWER			
CAB DETAILS ATCT (ADDISON AIRPORT) TEXAS			
ADDISON SUBMITTED: <i>Randy Ray</i> SYSTEMS ENGINEER, ANI-640	APPROVED: <i>Chris Call</i> MANAGER TERMINAL PLATFORM, ANI-640	ISSUED BY: <i>James E. Harper</i> AIRWAY FACILITIES DIVISION	
DESIGNED: GARY WILLIAMS REVISION: A. AMBARDEKAR ORIG. DFT.: S.RAJPREJIA FACILITY:	DATE: 06-22-01 DRAWING NUMBER: ADS-ATCT-A44	DALLAS, TX	

FILENAME: ADS1A044.DDT