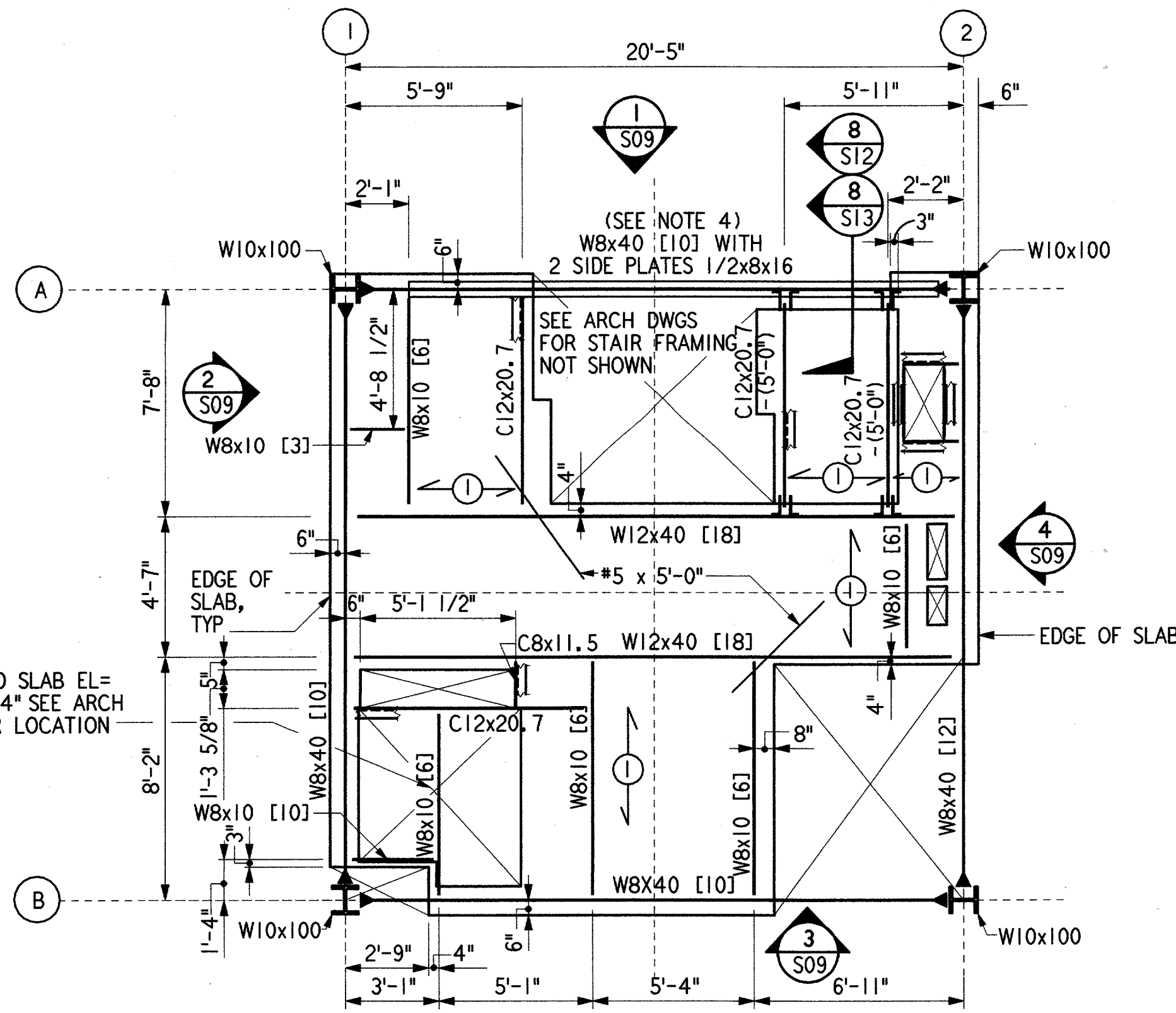


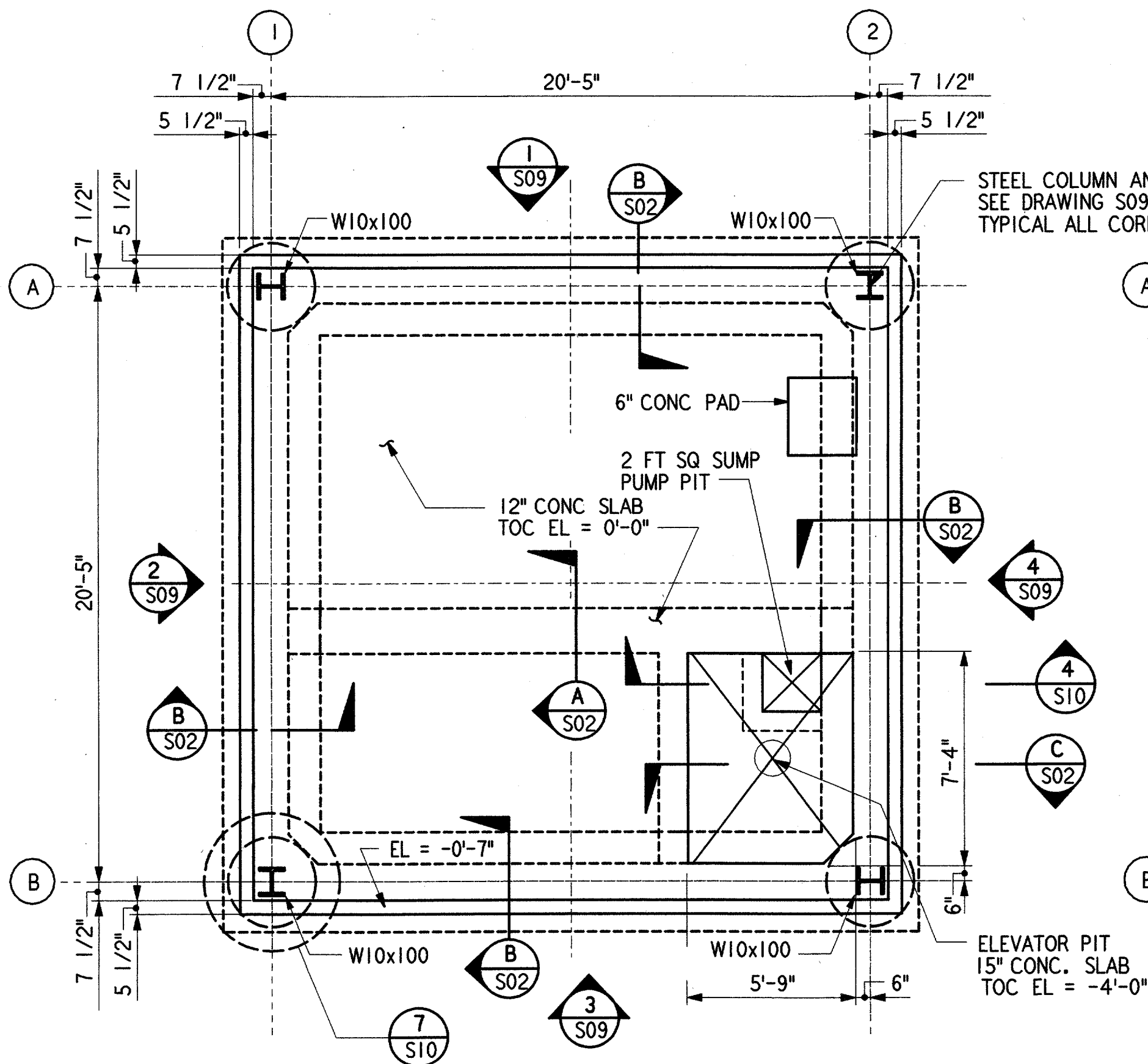
**TOP INTERMEDIATE LEVEL FRAMING PLAN**

1/4" = 1'-0" TOS = 29'-7 1/2" (UON)



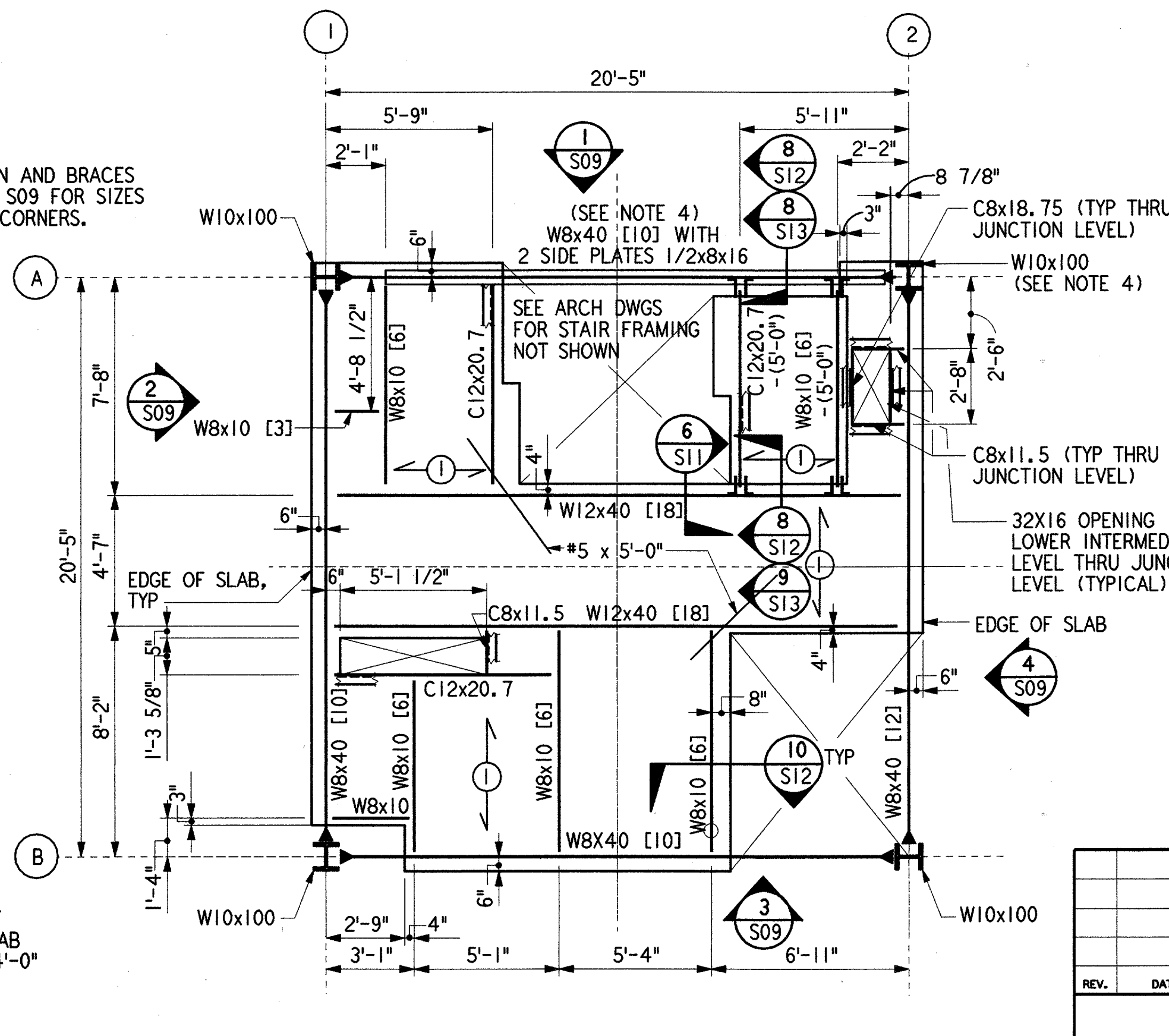
**JUNCTION LEVEL FRAMING PLAN**

1/4" = 1'-0" TOS = 39'-7 1/2" (UON)



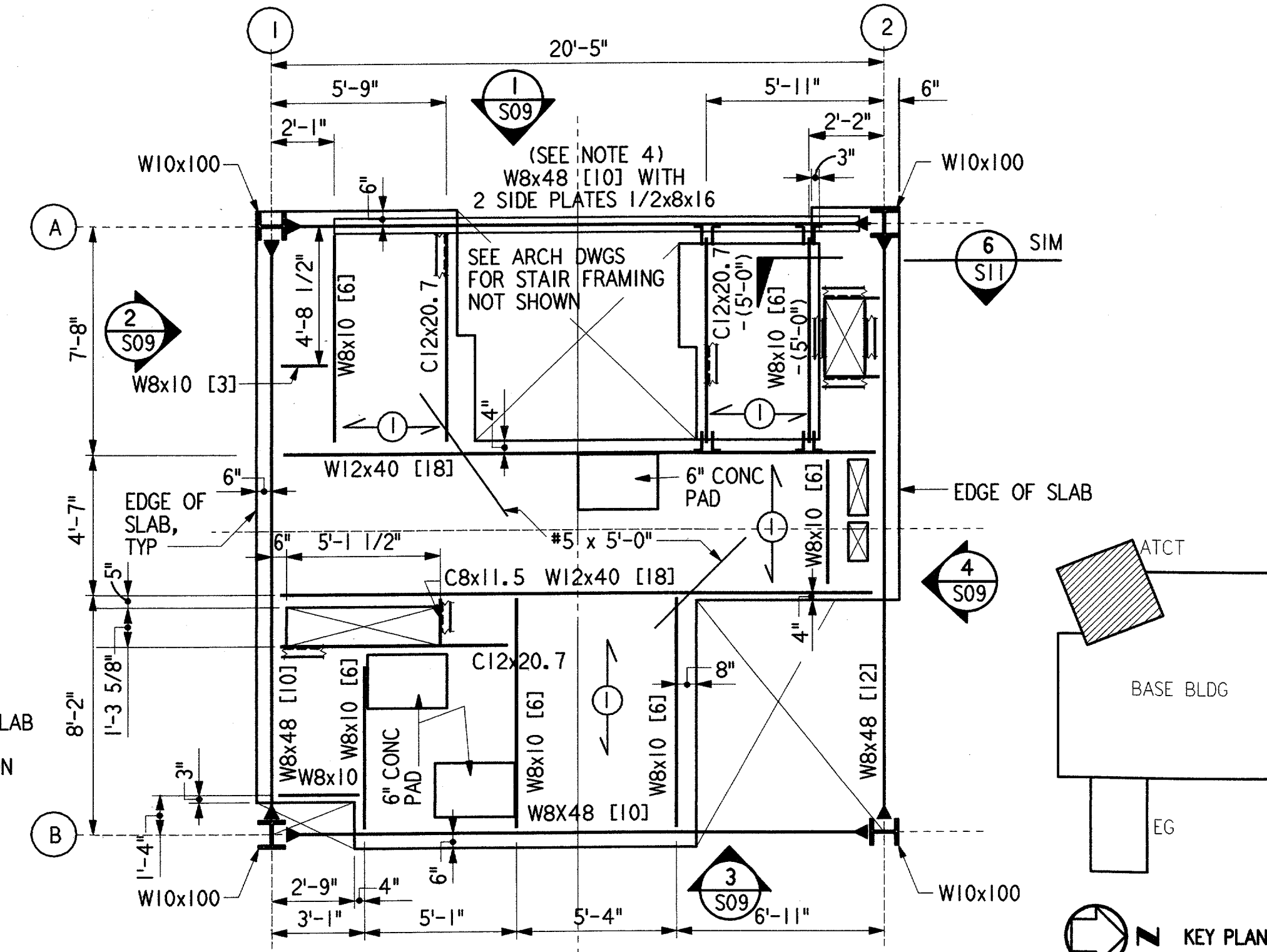
**GROUND LEVEL FRAMING PLAN**

1/4" = 1'-0" TOC = 0'-0" (UON)



**LOWER INTERMEDIATE LEVEL FRAMING PLAN**

1/4" = 1'-0" TOS = 9'-7 1/2" (UON)



**MIDDLE INTERMEDIATE LEVEL FRAMING PLAN**

1/4" = 1'-0" TOS = 19'-7 1/2" (UON)

**NOTES:**

- ① DIRECTION OF 2"x18 GAGE STEEL DECK WITH 2 1/2" NORMAL WEIGHT CONCRETE TOPPING AND 4x4-W2.1 x W2.1 WELDED WIRE FABRIC.
- [10] NUMBER OF 3/4" DIAMETER x4" WELDED HEADED STUDS EVENLY SPACED IN CONCRETE SLAB ON STEEL BEAM.
- (-4") DIFFERENCE IN TOP OF STEEL ELEVATION OF STEEL BEAM FROM TYPICAL TOP OF STEEL ELEVATION AT THIS LEVEL.
- MOMENT CONNECTION WITH COMPLETE PENETRATION WELDS AT TOP AND BOTTOM FLANGES OF BEAM.

**GENERAL NOTES :**

1. FOR TOWER FRAME ELEVATIONS SEE SHEET S09.
2. FOR BEAM SIZE AND TOP OF STEEL ELEVATIONS NOT SHOWN SEE SHEET S09.
3. COORDINATE EXACT DIMENSIONS OF OPENING FOR DUCT PENETRATION WITH MECHANICAL CONTRACTOR.
4. ALL COLUMNS W10x100 AND ALL BEAMS W8x40 AND W8x48 ARE GRADE 50 TYPICAL ALL LEVELS.

S04

REV.	DATE	DESCRIPTION	DFTG.	CHECKED

DALLAS, TX

DEPARTMENT OF TRANSPORTATION  
FEDERAL AVIATION ADMINISTRATION  
SOUTHWEST REGION FORT WORTH, TEXAS

LOW ACTIVITY LEVEL  
AIRPORT TRAFFIC CONTROL TOWER

FLOOR FRAMING PLANS  
ATCT

ADDISON (ADDISON AIRPORT) TEXAS

DESIGNED BY: A. RAB  
REVIEWED BY: N. PAREKH  
ORIG. DFT. S. RAJPREJA  
FACILITY:

ISSUED BY: AIRWAY FACILITIES DIVISION  
DATE: 06-22-01  
DRAWING NUMBER: ADS-ATCT- S04

APPROVED: [Signature]  
MANAGER TERMINAL PLATFORM, ANI-640