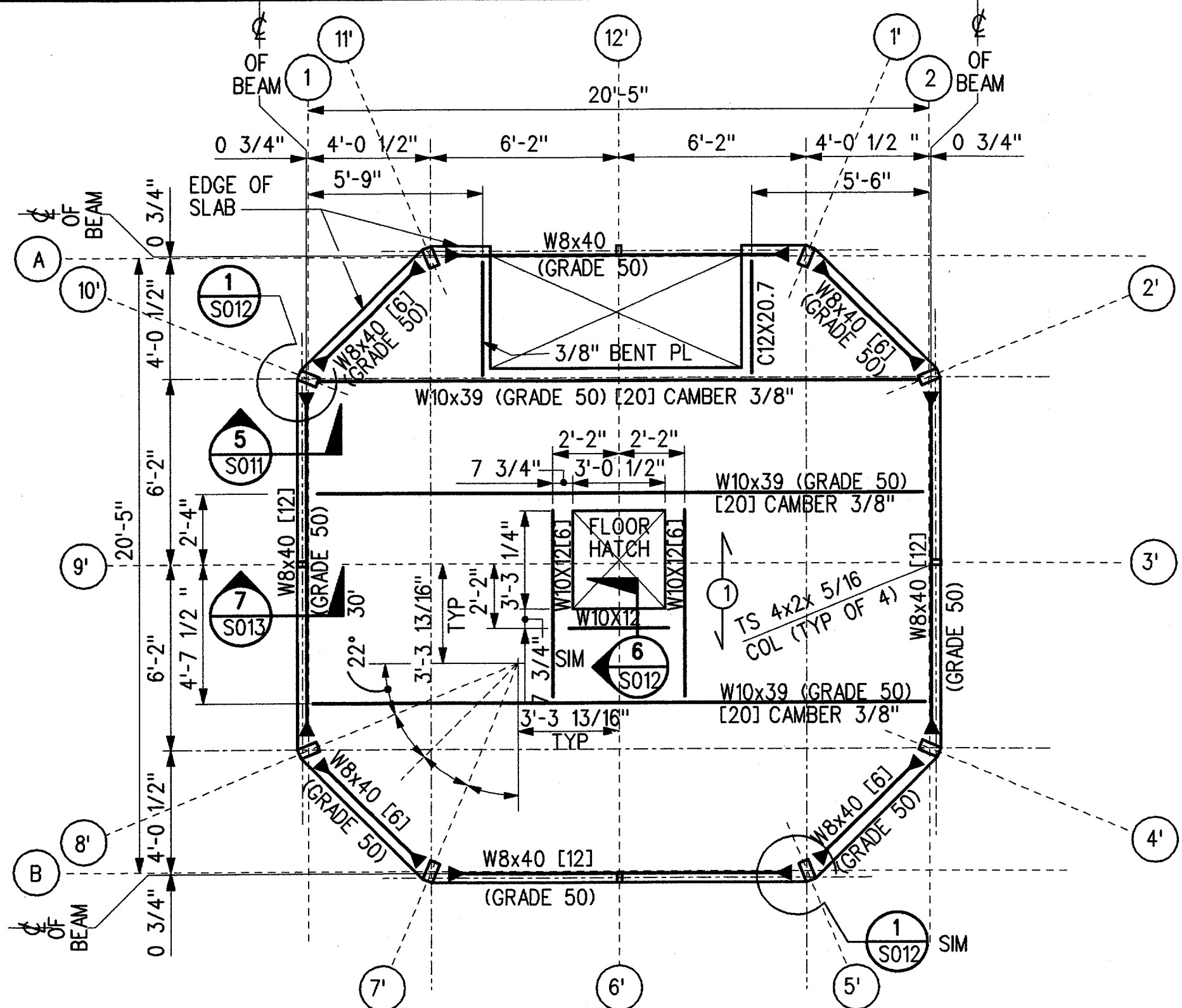
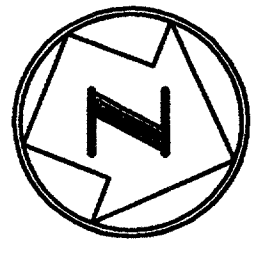
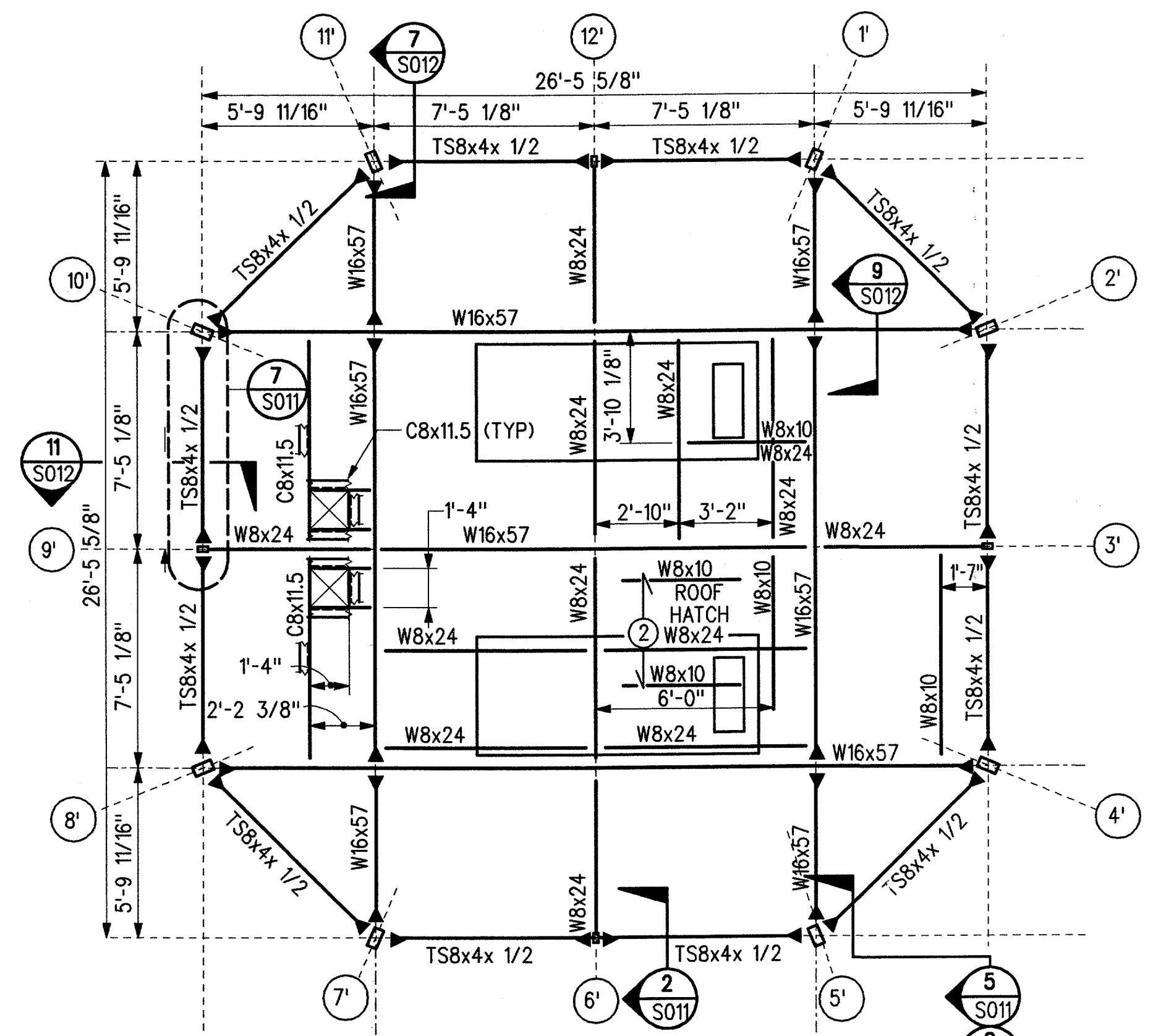


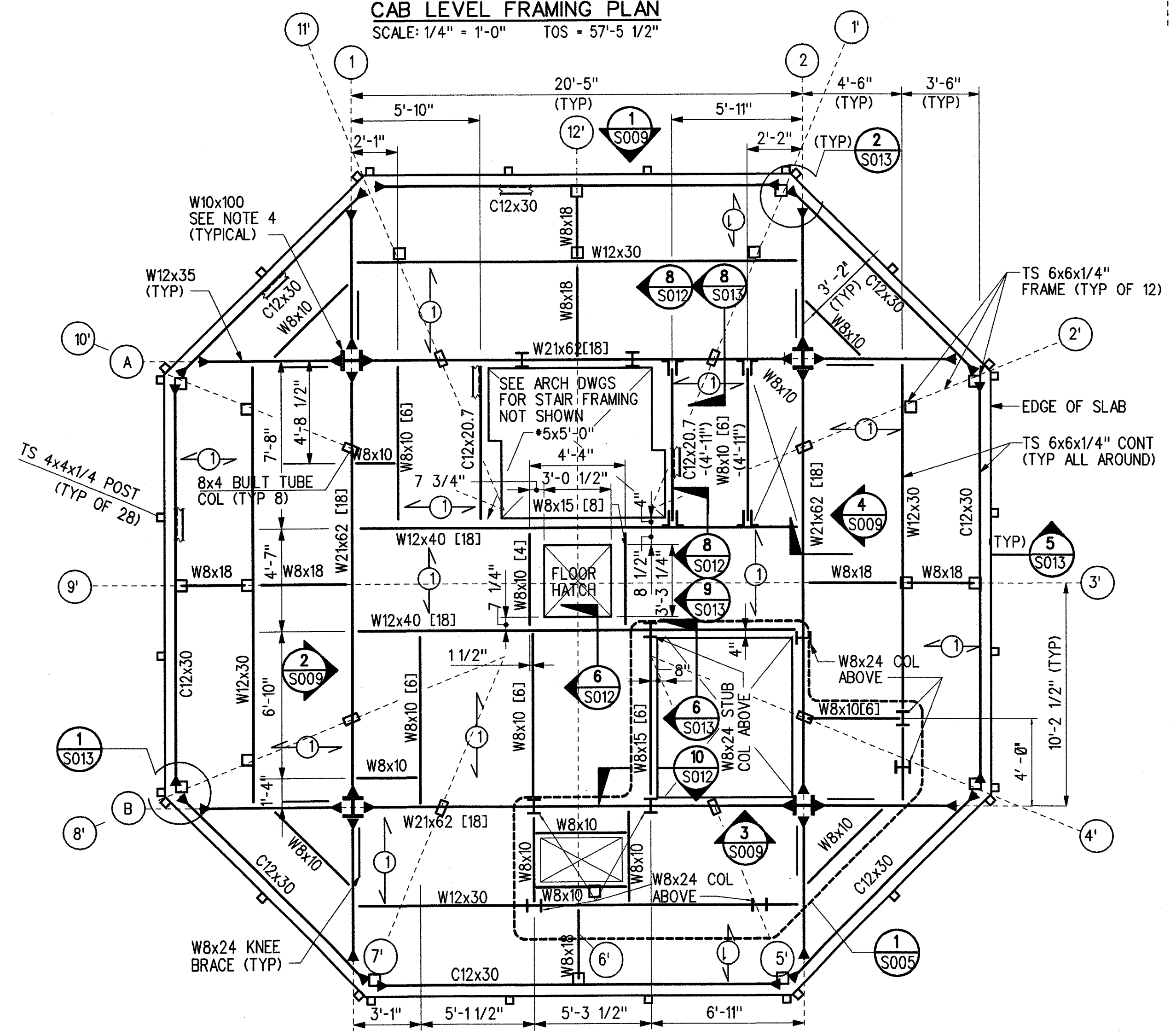
THIS DRAWING PRODUCED ON THE SOUTHWEST REGION MICROSTATION SYSTEM



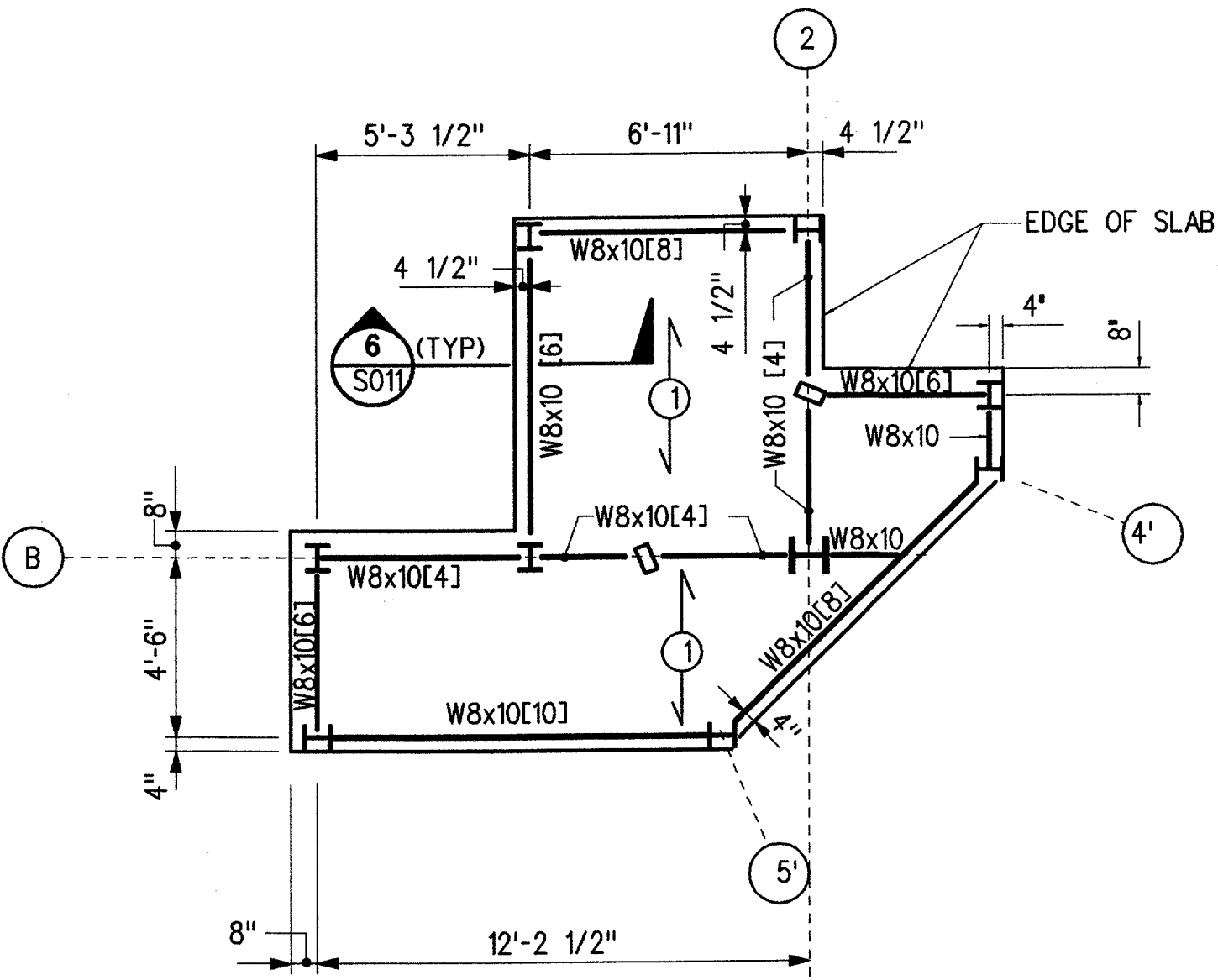
**CAB LEVEL FRAMING PLAN**  
SCALE: 1/4" = 1'-0" TOS = 57'-5 1/2"



**CAB ROOF FRAMING PLAN**  
SCALE: 1/4" = 1'-0" TOS = 71'-8"



**CABLE ACCESS AND WALKWAY LEVEL FRAMING PLAN**  
SCALE: 1/4" = 1'-0" TOS = 49'-5 1/2" (UON)



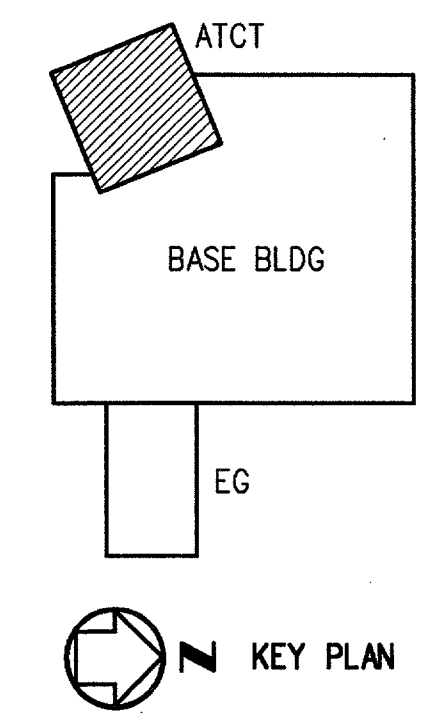
**1 RAISED LEVEL FRAMING PLAN S005**  
SCALE: 1/4" = 1'-0" TOS = 52'-2"

**NOTES:**

- ① DIRECTION OF 2"x18 GAGE STEEL DECK WITH 2 1/2" NORMAL WEIGHT CONCRETE TOPPING AND 4x4-W2.1 x W2.1 WELDED WIRE FABRIC.
- ② DIRECTION OF 1 1/2"x20 GAGE STEEL DECK.
- [10] NUMBER OF 3/4" DIAMETER x 4" WELDED HEADED STUDS EVENLY SPACED IN CONCRETE SLAB ON STEEL BEAM.
- (-4") DIFFERENCE IN TOP OF STEEL ELEVATION OF STEEL BEAM FROM TYPICAL TOP OF STEEL ELEVATION AT THIS LEVEL.
- ➔ MOMENT CONNECTION WITH COMPLETE PENETRATION WELDS AT TOP AND BOTTOM FLANGES OF BEAM.

**GENERAL NOTES:**

1. FOR TOWER FRAME ELEVATIONS SEE SHEET S009.
2. FOR BEAM SIZE AND TOP OF STEEL ELEVATIONS NOT SHOWN SEE SHEET S009.
3. COORDINATE EXACT LOCATION AND DIMENSIONS OF OPENINGS FOR DUCT PENETRATION WITH MECHANICAL CONTRACTOR.
4. ALL COLUMNS W10x100 AND ALL BEAMS W8x40 ARE GRADE 50 TYPICAL ALL LEVELS.



PROJECT	06-23-03	FAA REDESIGN OF HVAC, JON 21874.	9700164	06-23-03
REV	DATE	DESCRIPTION	JCN	REDLINE DATE

DEPARTMENT OF TRANSPORTATION  
**FEDERAL AVIATION ADMINISTRATION**  
FORT WORTH IMPLEMENTATION CENTER FORT WORTH, TX  
**LOW ACTIVITY LEVEL ATCT**

**FLOOR FRAMING PLANS**

ADDISON	ADDISON AIRPORT	TX
REVIEWED BY	SUBMITTED BY	APPROVED BY
	<i>Edward Hackett</i>	<i>Andrew Boyer</i>
DESIGNED	PROJECT ENGINEER, ANI-640	PLATFORM MANAGER, ANI-640
DRAWN	ED HACKETT	DATE
CHECKED	LTM	06-23-03
	NAS IMPLEMENTATION ANI-600	JCN
		9700164
		REV
		ADS-D-ATCT-S005

m:\add\atct\active\add-d-act-s005.dgn 07/17/2003 04:54:38 PM kaem