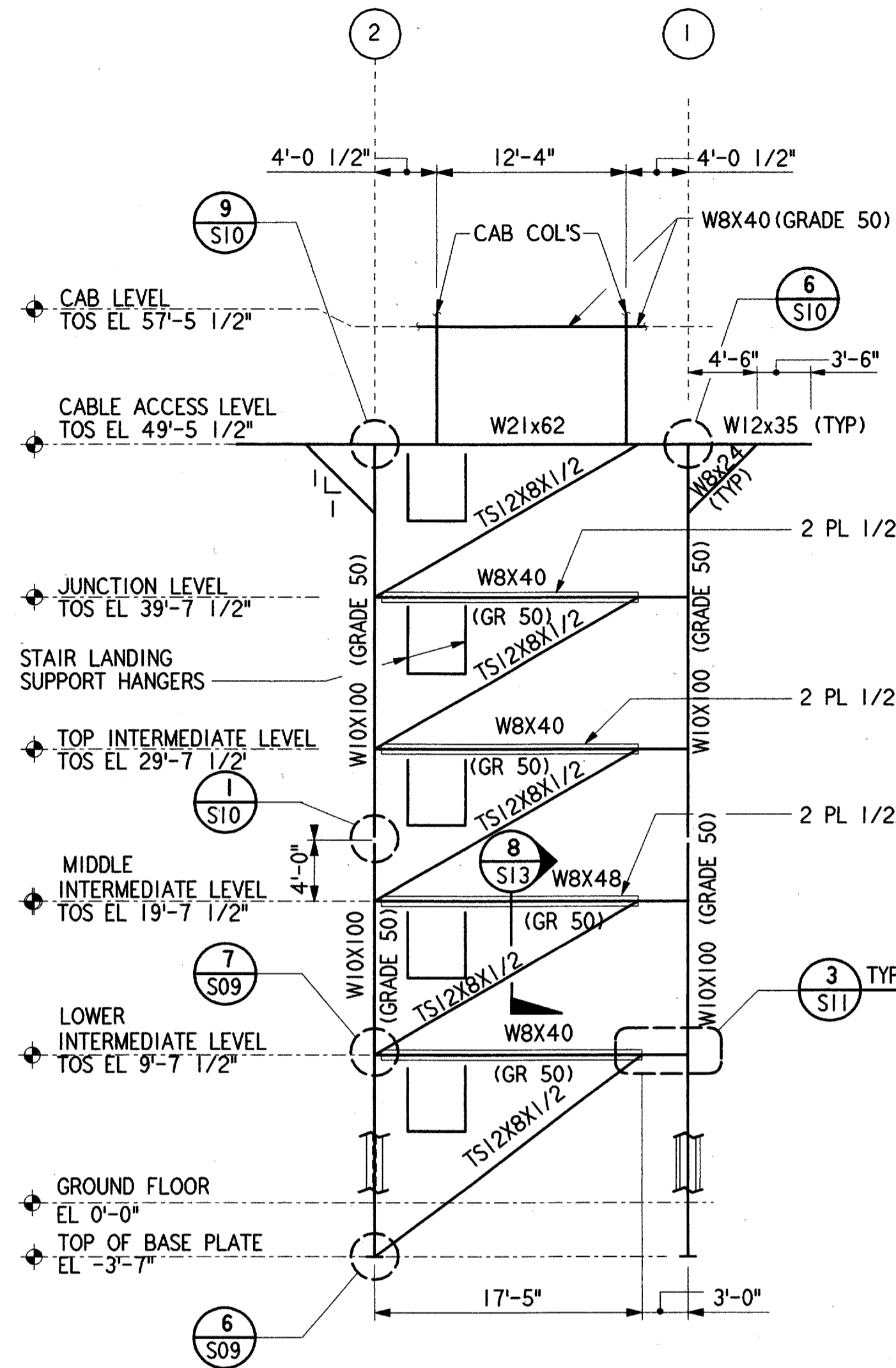
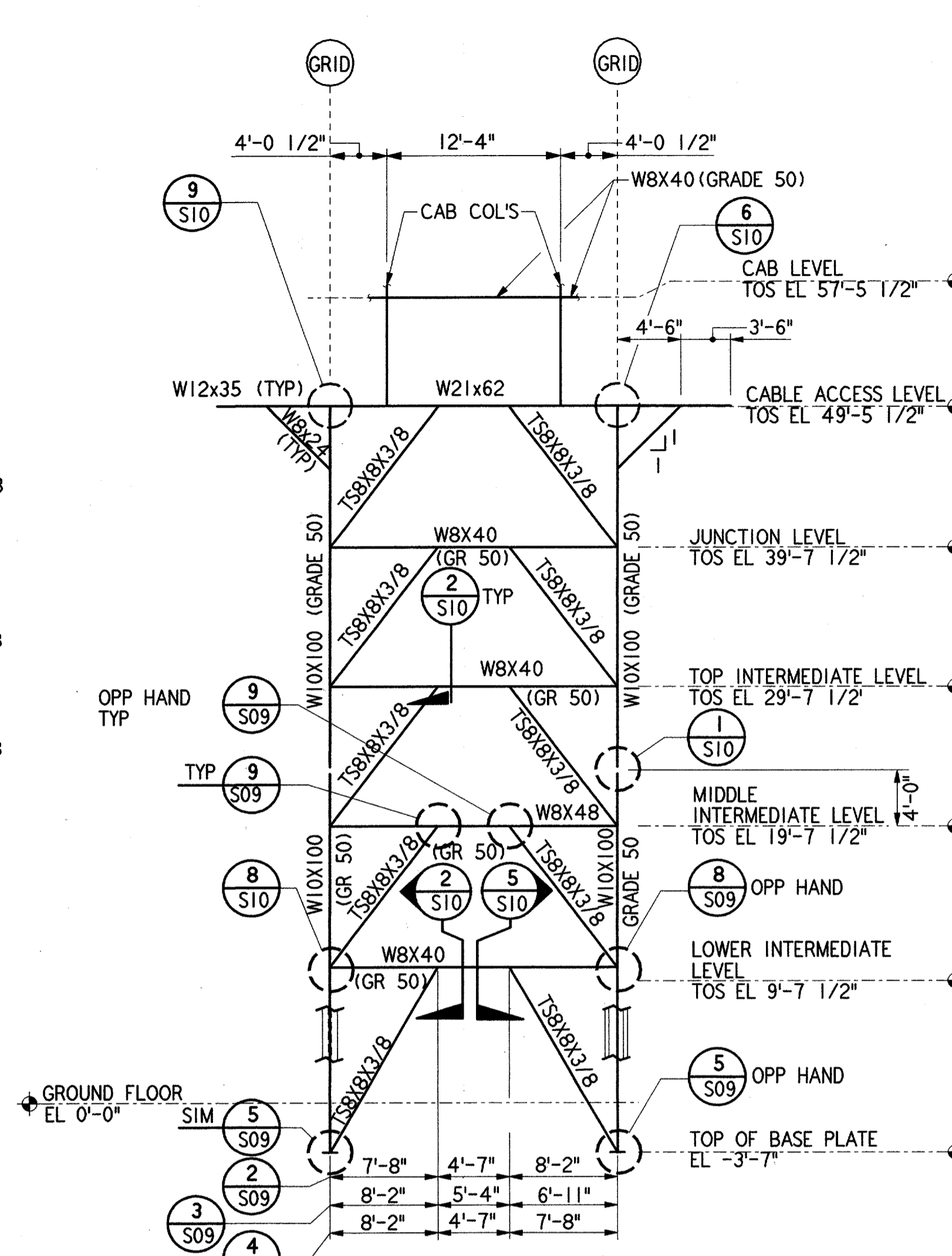


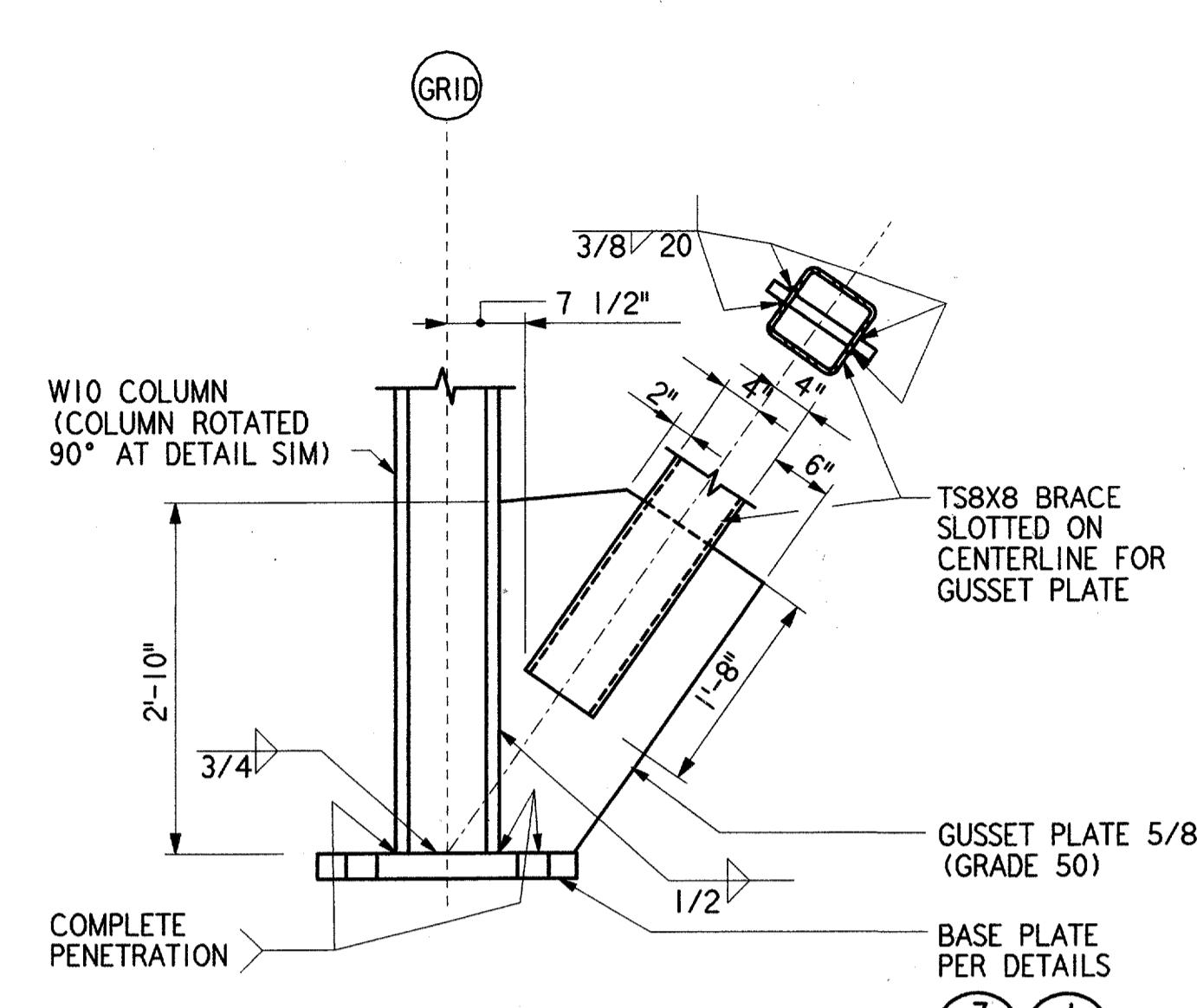
H
G
F
E
D
C
B
A



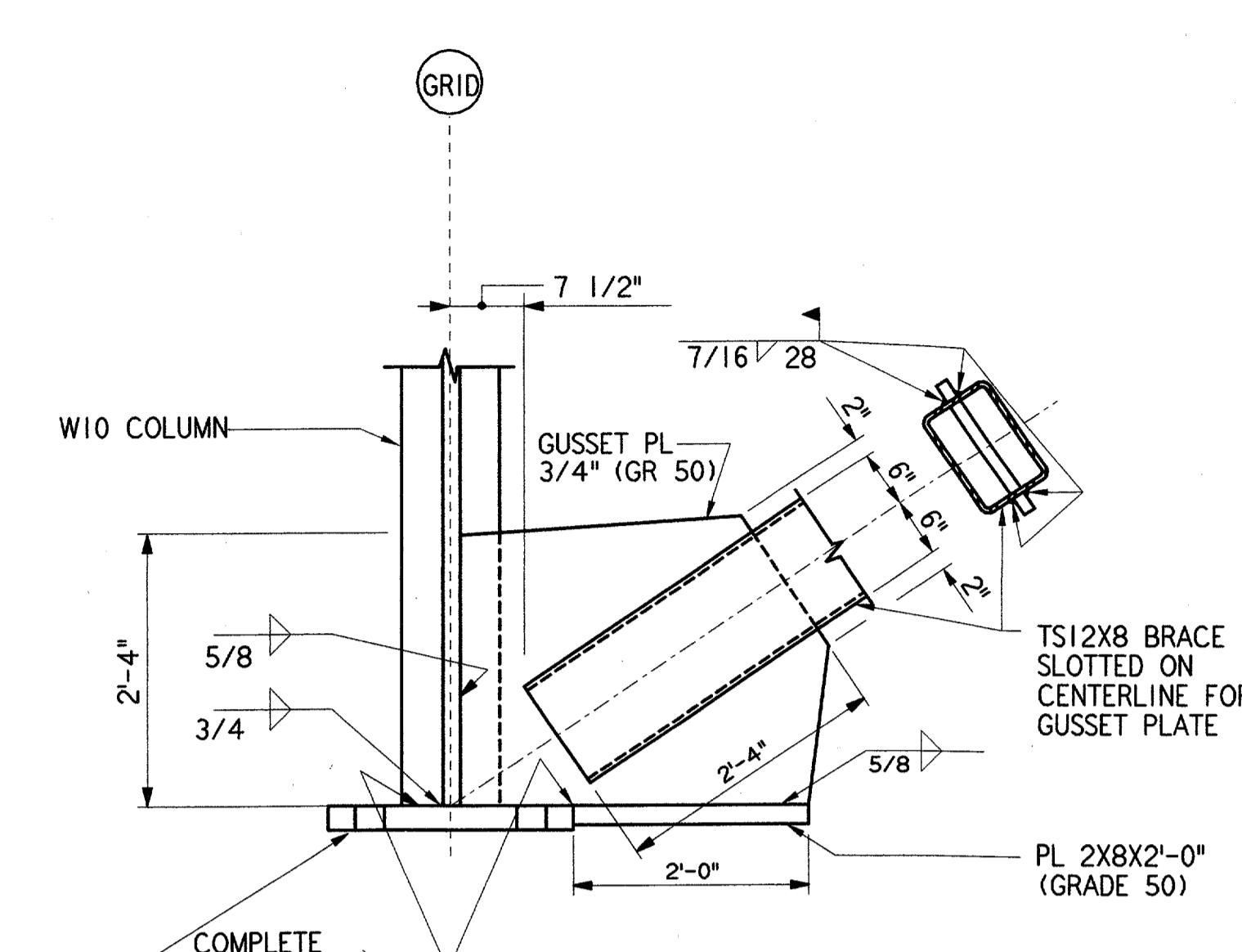
TOWER FRAME ELEVATION 1 REF S04 S05
1/8" = 1'-0"



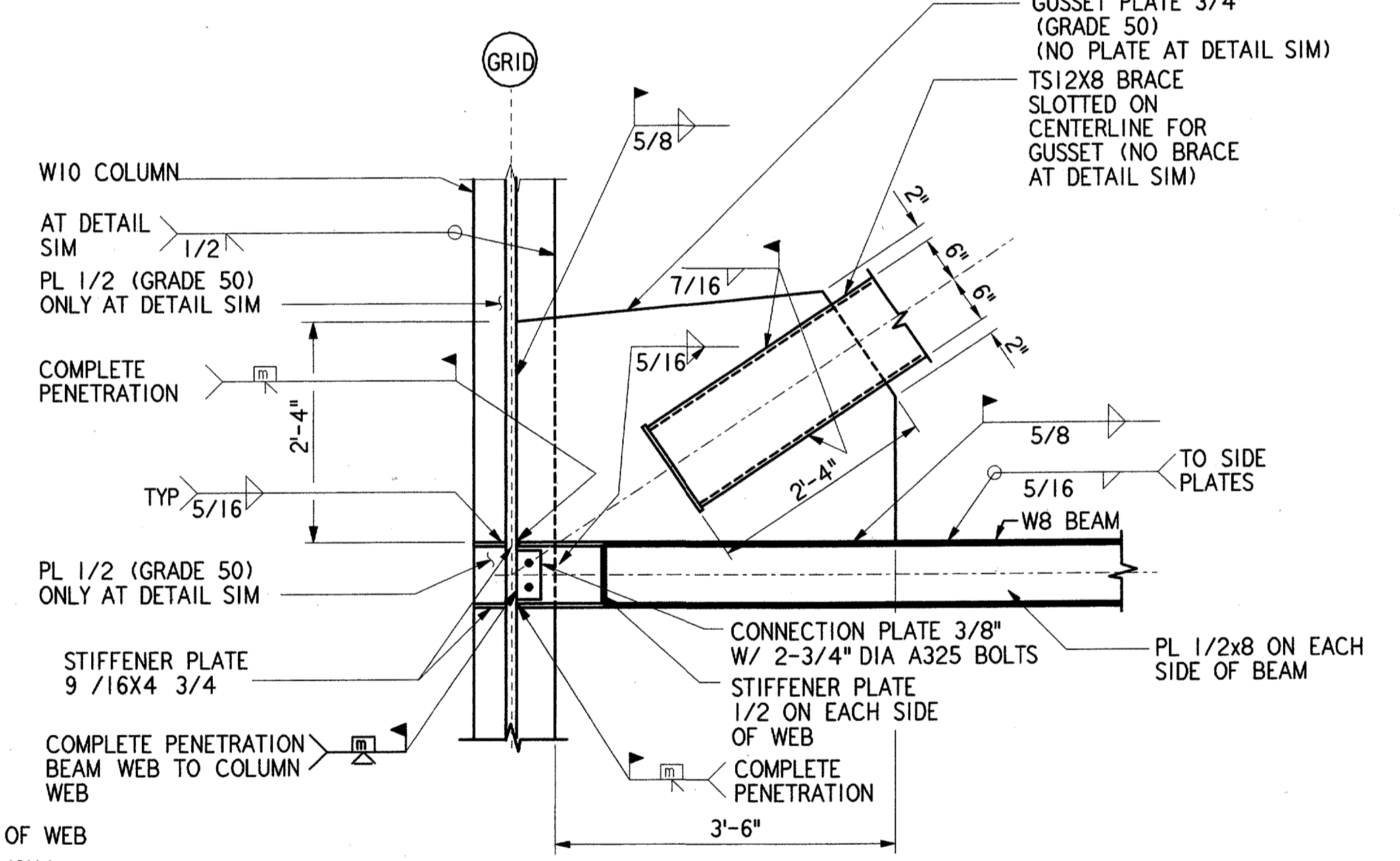
TOWER FRAME ELEVATION 2 REF S09 S09 S09 S04 S05
1/8" = 1'-0"



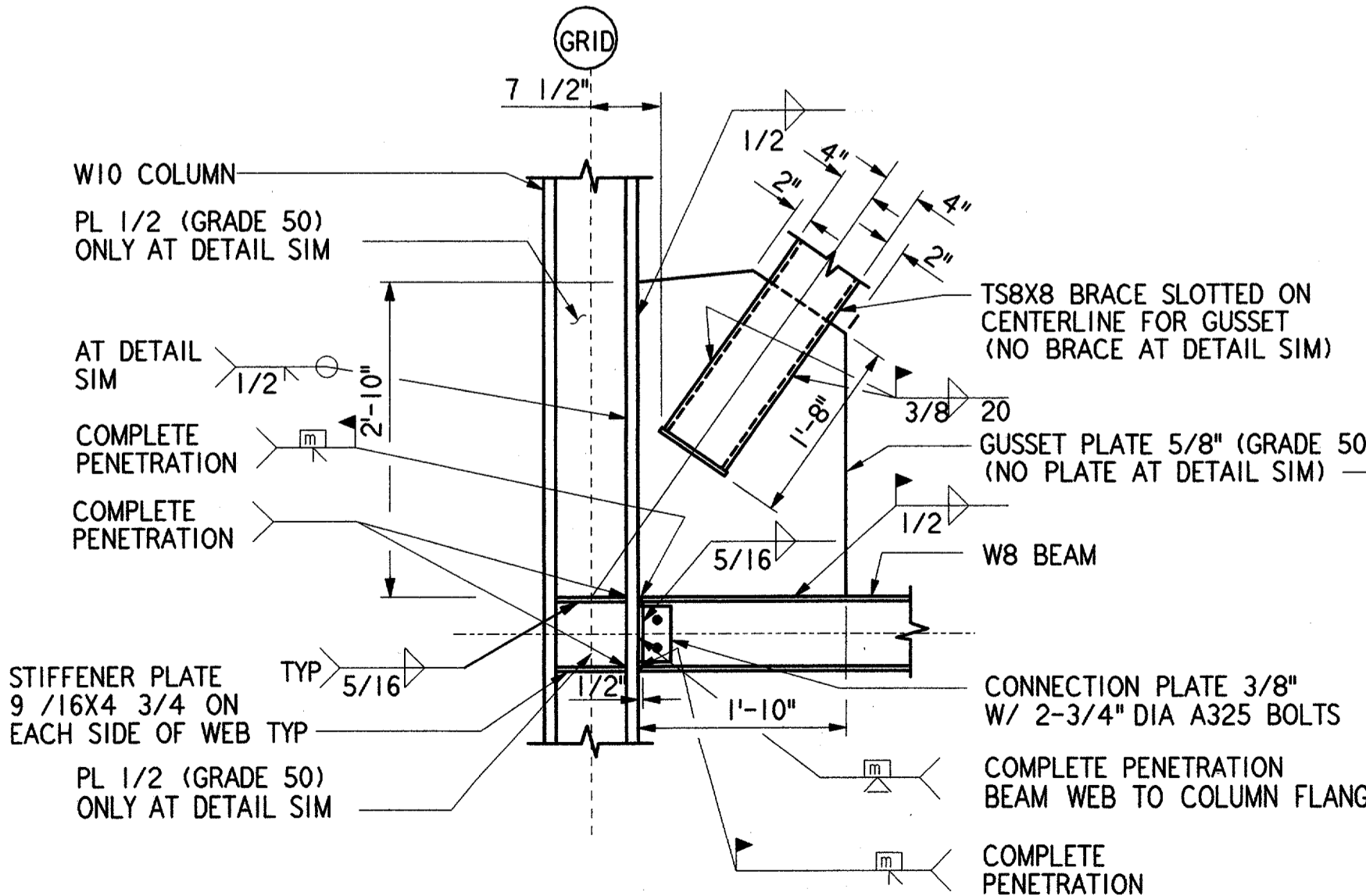
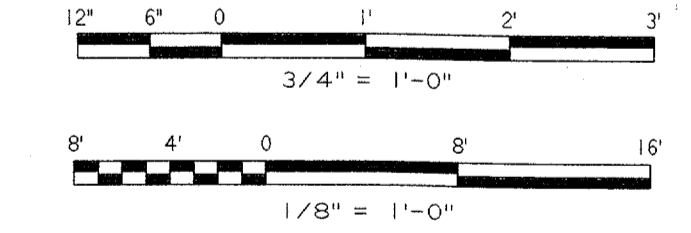
BRACE CONNECTION AT COLUMN BASE 5 REF S09
3/4" = 1'-0"



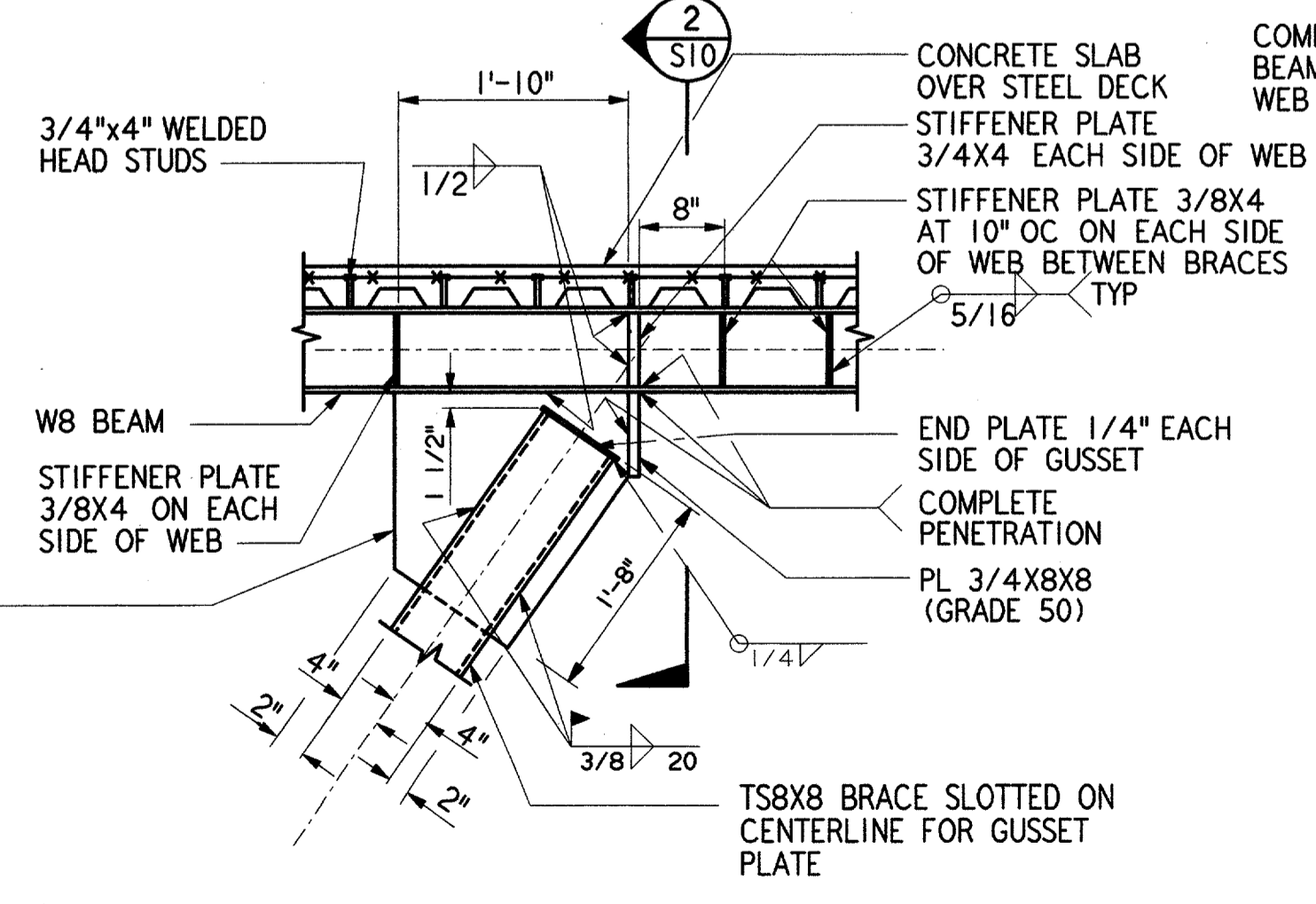
BRACE CONNECTION AT COLUMN BASE 6 REF S09
3/4" = 1'-0"



BRACE CONNECTION AT COLUMN AND BEAM 7 REF S09 S14
3/4" = 1'-0"



BRACE CONNECTION AT COLUMN AND BEAM 8 REF S09 S10 S14
3/4" = 1'-0"



BRACE CONNECTION AT LINK BEAM 9 REF S09 S10 S14
3/4" = 1'-0"

DALLAS, TX		DATE: 08-22-01	

DEPARTMENT OF TRANSPORTATION
FEDERAL AVIATION ADMINISTRATION
SOUTHWEST REGION FORT WORTH, TEXAS

LOW ACTIVITY LEVEL
AIRPORT TRAFFIC CONTROL TOWER

FRAME ELEVATIONS, SECTIONS AND DETAILS ATCT

ADDISON (ADDISON AIRPORT) TEXAS

DESIGNED BY: NIKHIL B. PAREKH
REVIEWED BY: S. RAJPREEJA
FACILITY: AIRWAY FACILITIES DIVISION

ISSUED BY: AIRWAY FACILITIES DIVISION
DRAWING NUMBER: ADS-ATCT- S09

DATE: 08-22-01

MANAGER TERMINAL PLATFORM, ANI-640

S09

FILENAME: