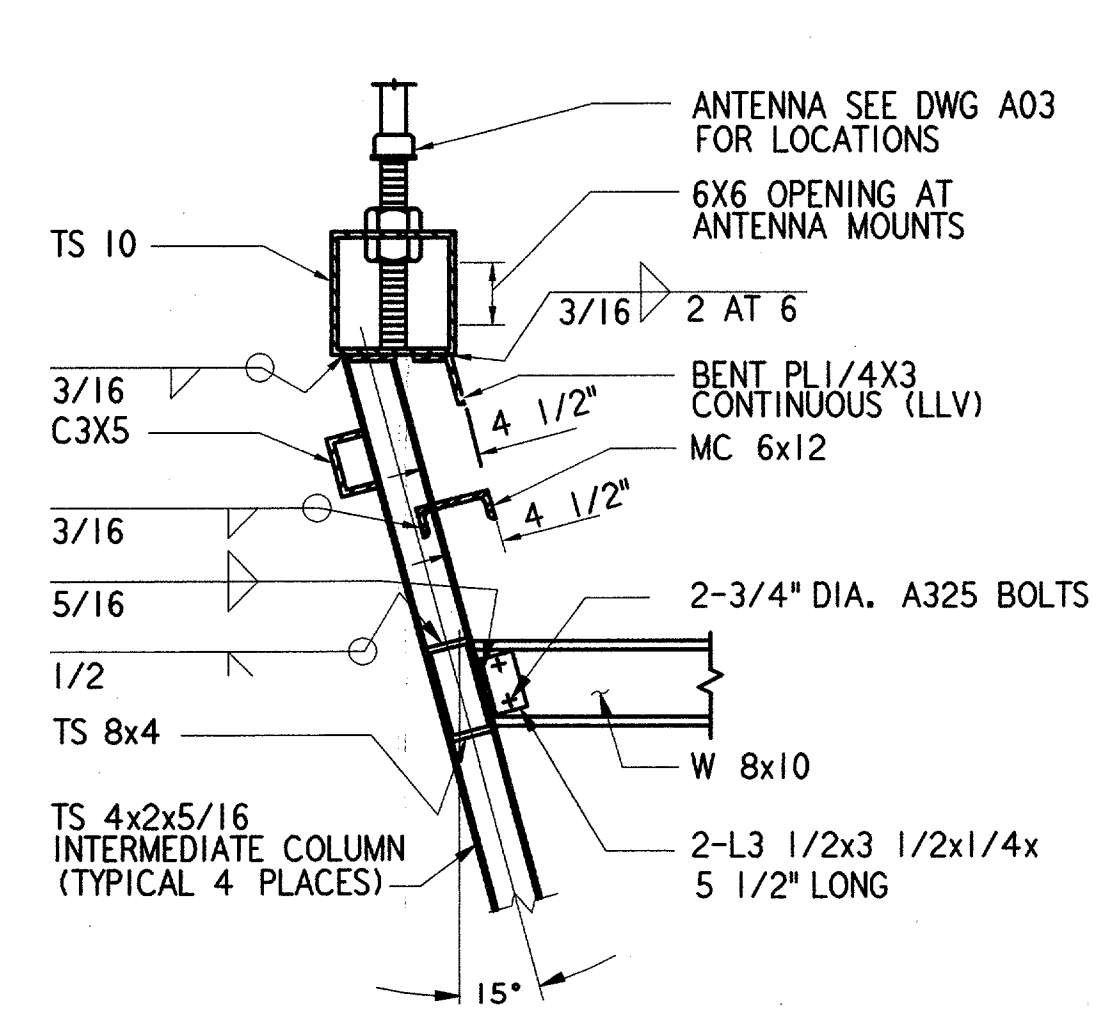
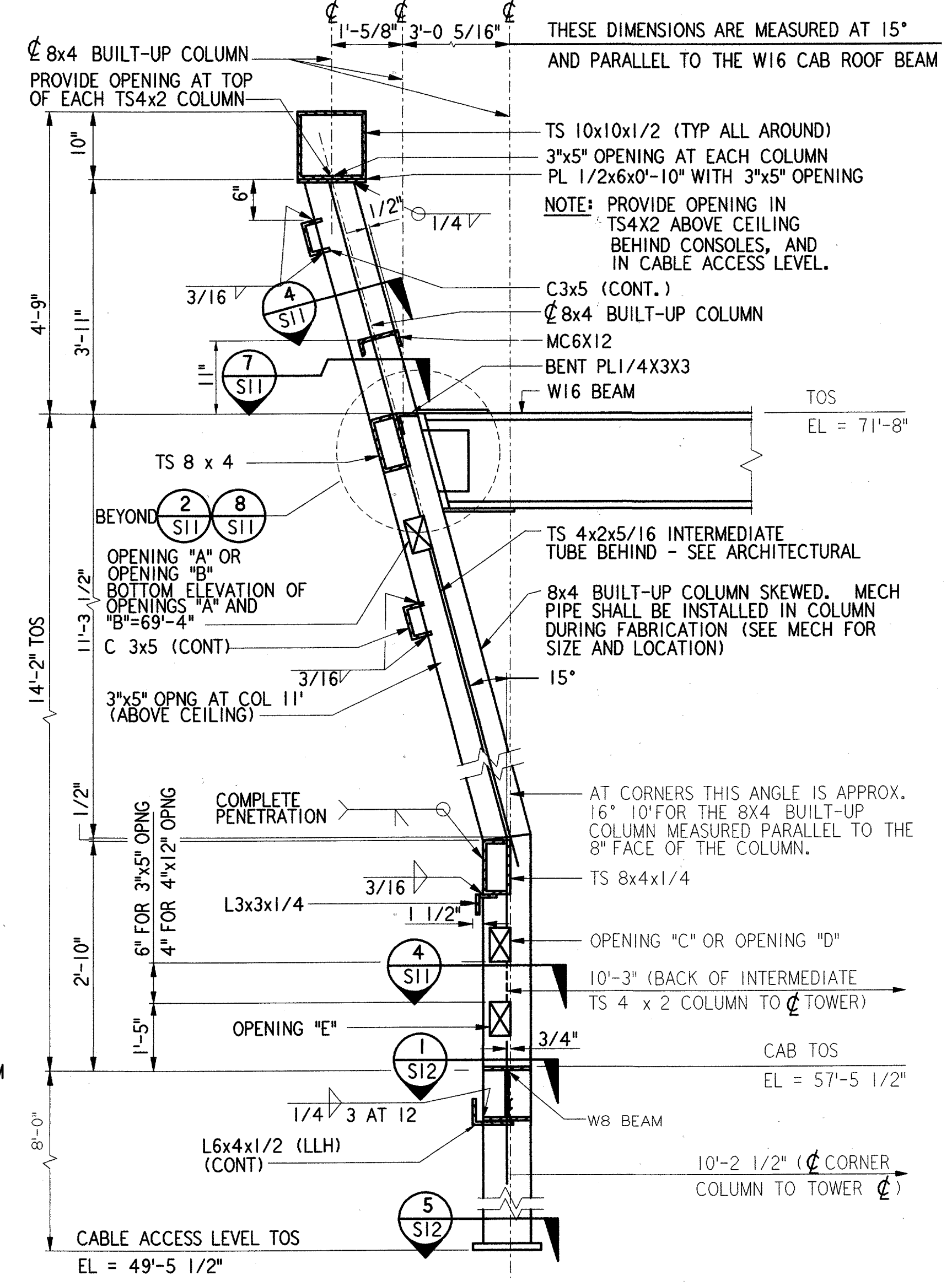


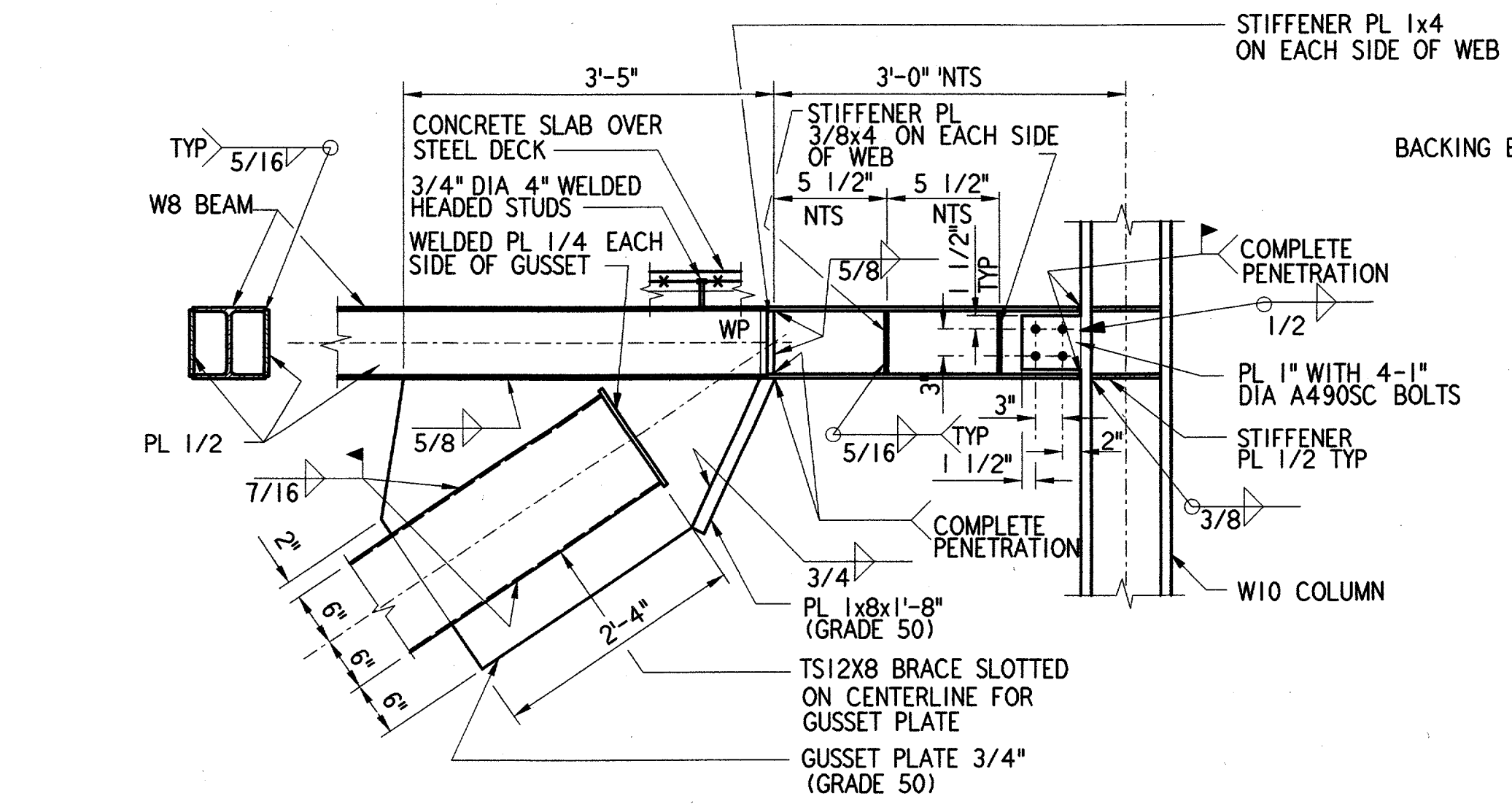
COLUMN BASE PLATE SECTION 1
REF S11 S09 S10
1 1/2" = 1'-0"



SECTION 2
REF S05 S11
3/4" = 1'-0"

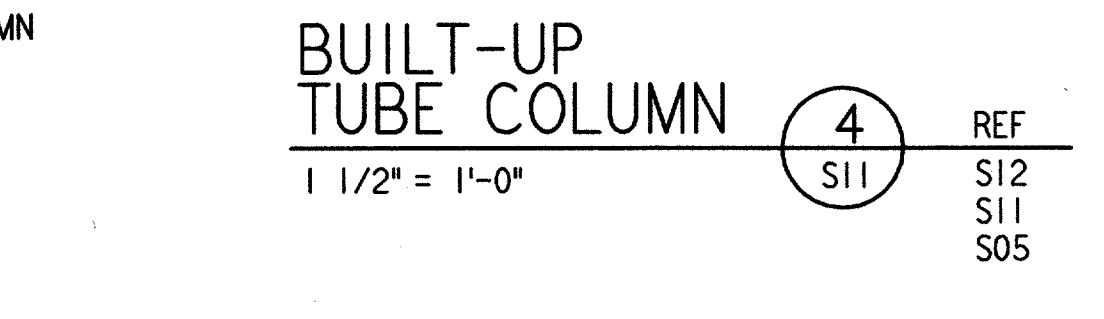


CAB COLUMN ELEVATION 5
REF S11 S05
3/4" = 1'-0"

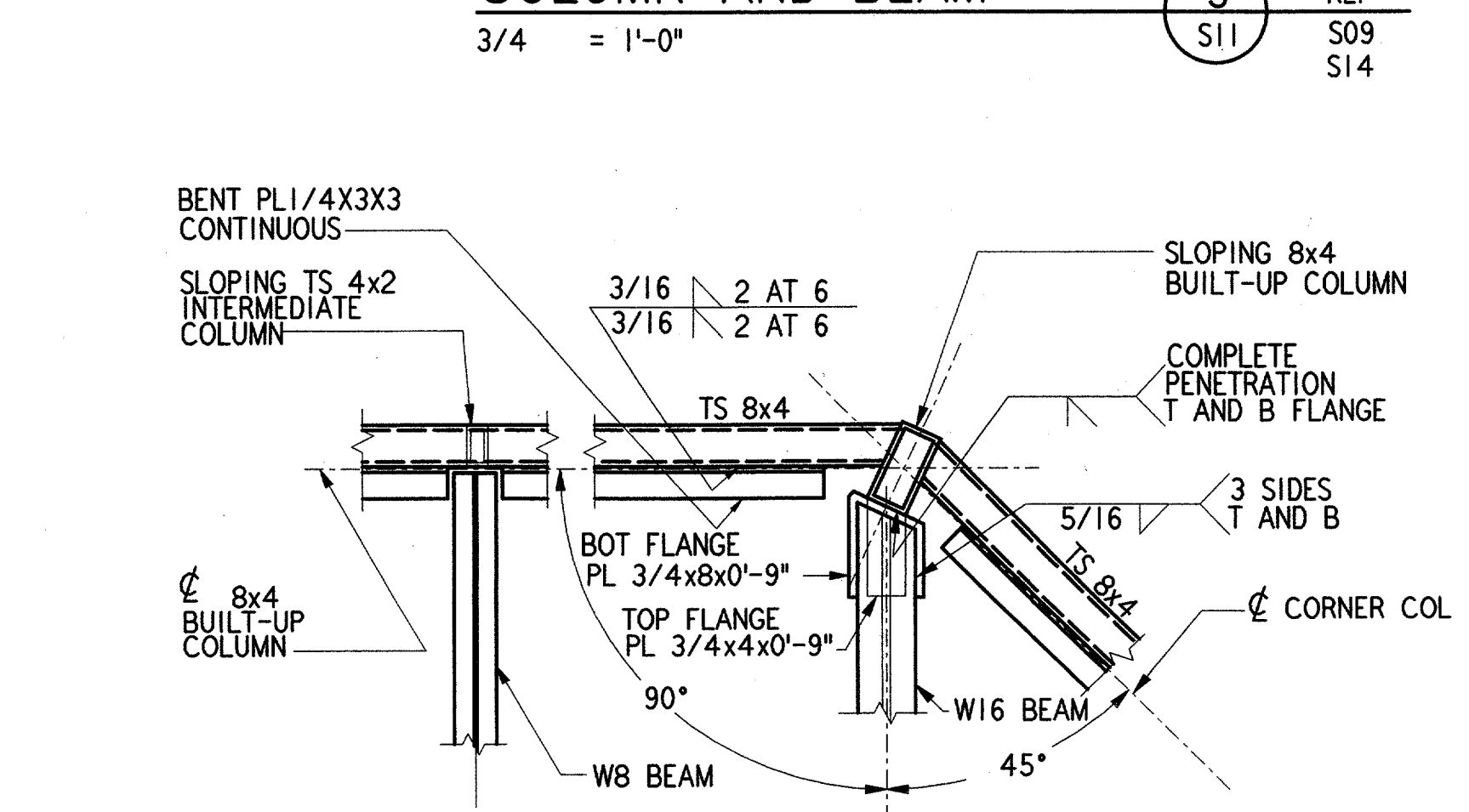


BRACE CONNECTION AT COLUMN AND BEAM 3
REF S11 S09 S14
3/4" = 1'-0"

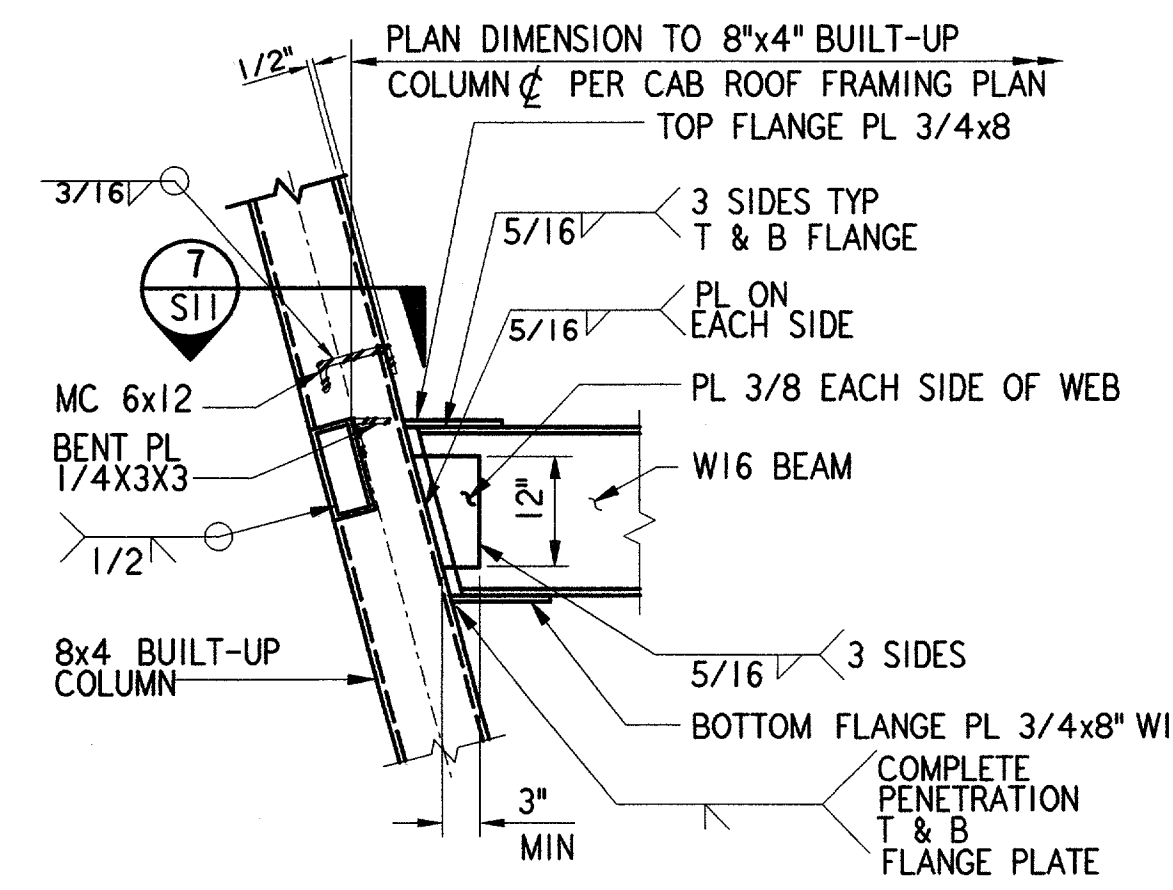
NOTES:
1. WELDS SHALL BE GROUND SMOOTH, MAINTAIN MAXIMUM INSIDE CLEARANCE BECAUSE CAB COLUMNS ARE USED AS ELECTRICAL RACEWAY



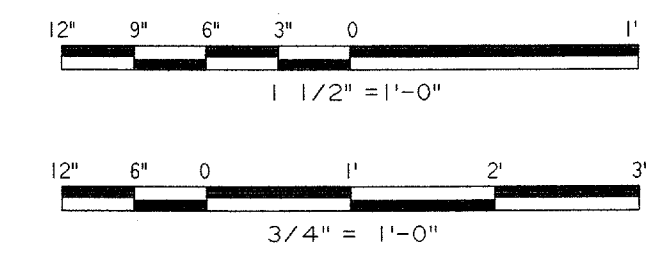
BUILT-UP TUBE COLUMN 4
REF S12 S11 S05
1 1/2" = 1'-0"



PLAN DETAIL 7
REF S11 S05 S11
3/4" = 1'-0"



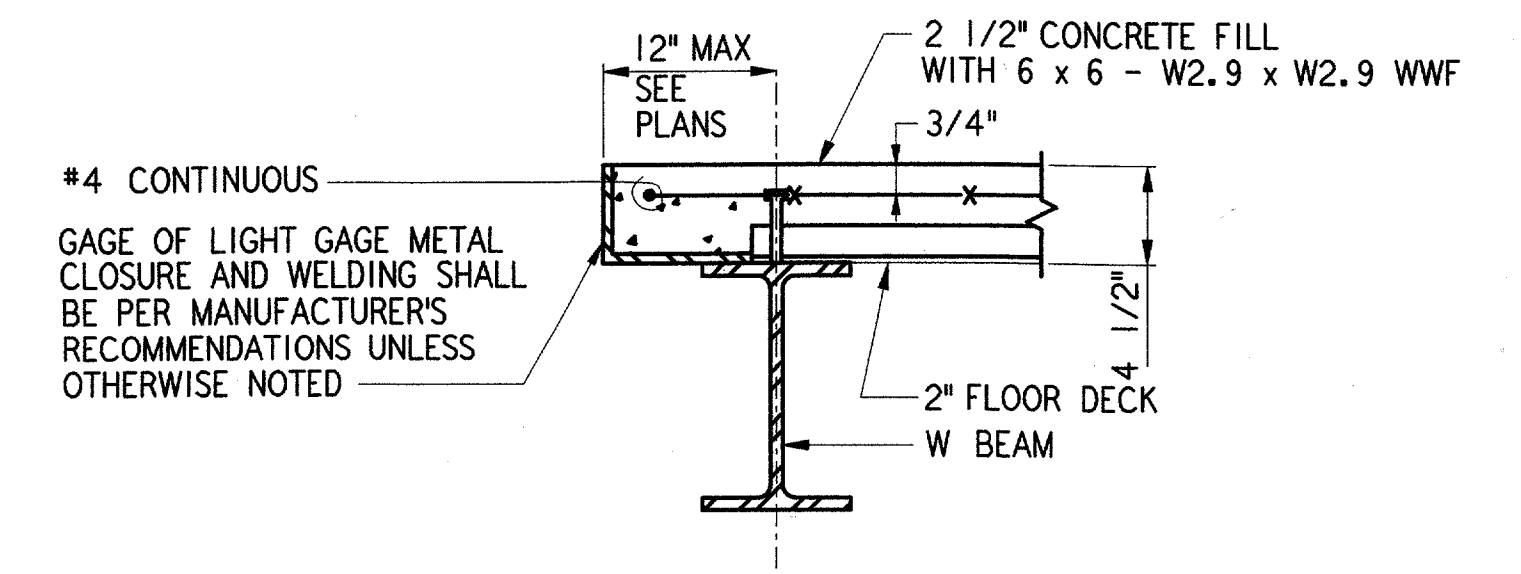
SECTION 8
REF S05 S11
3/4" = 1'-0"



NOTES:

- CAB COLUMNS ARE USED AS RACEWAY. FOR CAB COLUMN RACEWAY USE SCHEDULE ON THIS DRAWING. COORDINATE OPENING SIZES AND LOCATIONS WITH ELECTRICAL, MECHANICAL AND FAA.
- ALL ELEMENTS OF THE PIPING SYSTEM INSIDE CAB COLUMNS SHALL BE FABRICATED WITH COLUMNS.
- USE OF INTERIOR BACK UP BARS FOR THE FABRICATION OF CAB COLUMNS AND HORIZONTAL TUBES SHALL NOT PROJECT MORE THAN 1/4" INTO THE TUBE SPACE. THE MINIMUM INTERIOR SPACE FOR 8X4X5/16" SHALL BE 3"x7/8".
- PROVIDE OPENING IN EACH CAB COLUMN WITH 5/8" THICK PLATE REINFORCEMENT AS SHOWN IN OPENING IN COLUMN SCHEDULE BELOW.
- ALL EDGES OF OPENINGS IN CAB COLUMNS AND HORIZONTAL TUBES SHALL BE GROUND SMOOTH. GRIND ALL WELDS SMOOTH FOR CAB CONSTRUCTION. REMOVE BURRS ON ALL OPENINGS IN COLUMNS.
- PROVIDE 1 1/4" DIAMETER WEEP HOLE ON ALL SIDE 3/4" ABOVE THE BASE PLATE AT THE BOTTOM OF EACH CAB COLUMN. THESE HOLES SHALL NOT BE EXPOSED.

OPENING IN COLUMN SCHEDULE			
OPNG. LOCATION	COLUMN LOCATION	OPNG. SIZE	REMARKS
A	2', 3', 4', 5', 6', 7', 9', 11', 12'	3"x5"	DETAIL (2) S12
B	1', 8', 10'	4"x12"	DETAIL (3) S12
C	1', 8', 10'	4"x12"	DETAIL (3) S12
D	1', 2', 3', 4', 5', 6', 7', 9', 12'	3"x5"	DETAIL (2) S12
E	10'	4"x12"	DETAIL (3) S12



TYPICAL EDGE DETAIL 6
REF S11 S04
1 1/2" = 1'-0"

REV. DATE DESCRIPTION DFTG. CHECKED

STATE OF TEXAS
NIKHIL B. PAREKH
REGISTERED PROFESSIONAL ENGINEER
80393
6/22/21

PARSONS
DALLAS, TX

DEPARTMENT OF TRANSPORTATION
FEDERAL AVIATION ADMINISTRATION
SOUTHWEST REGION FORT WORTH, TEXAS

LOW ACTIVITY LEVEL
AIRPORT TRAFFIC CONTROL TOWER

SECTIONS AND DETAILS
ATCT

ADDISON (ADDISON AIRPORT) TEXAS

DESIGNED: A. RAB
REVIEWED: N. PAREKH
ORIG. DFT.: S. RAJPREEJA
FACILITY:

ISSUED BY: AIRWAY FACILITIES DIVISION
DATE: 06-22-21
DRAWING NUMBER: ADS-ATCT-S11