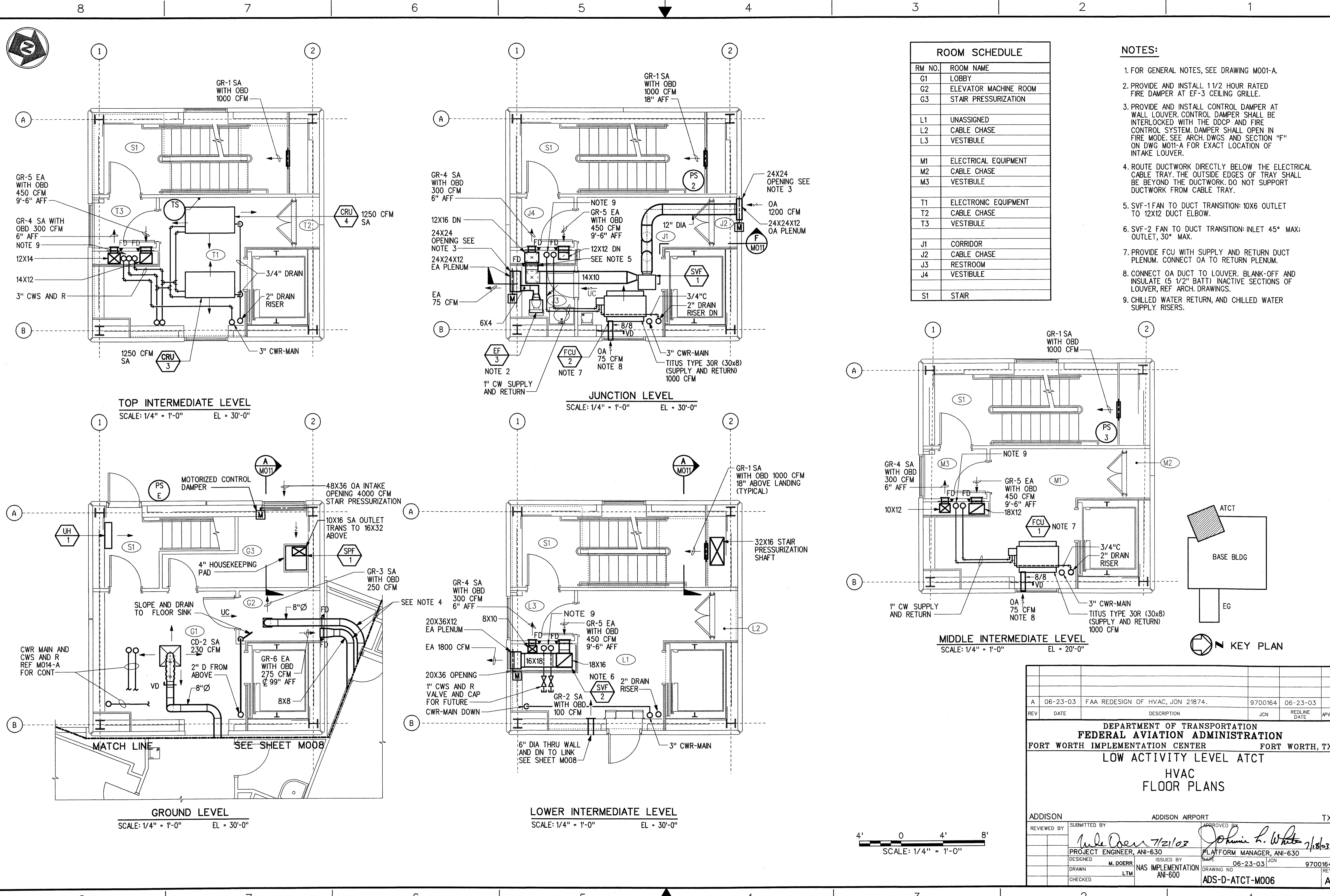
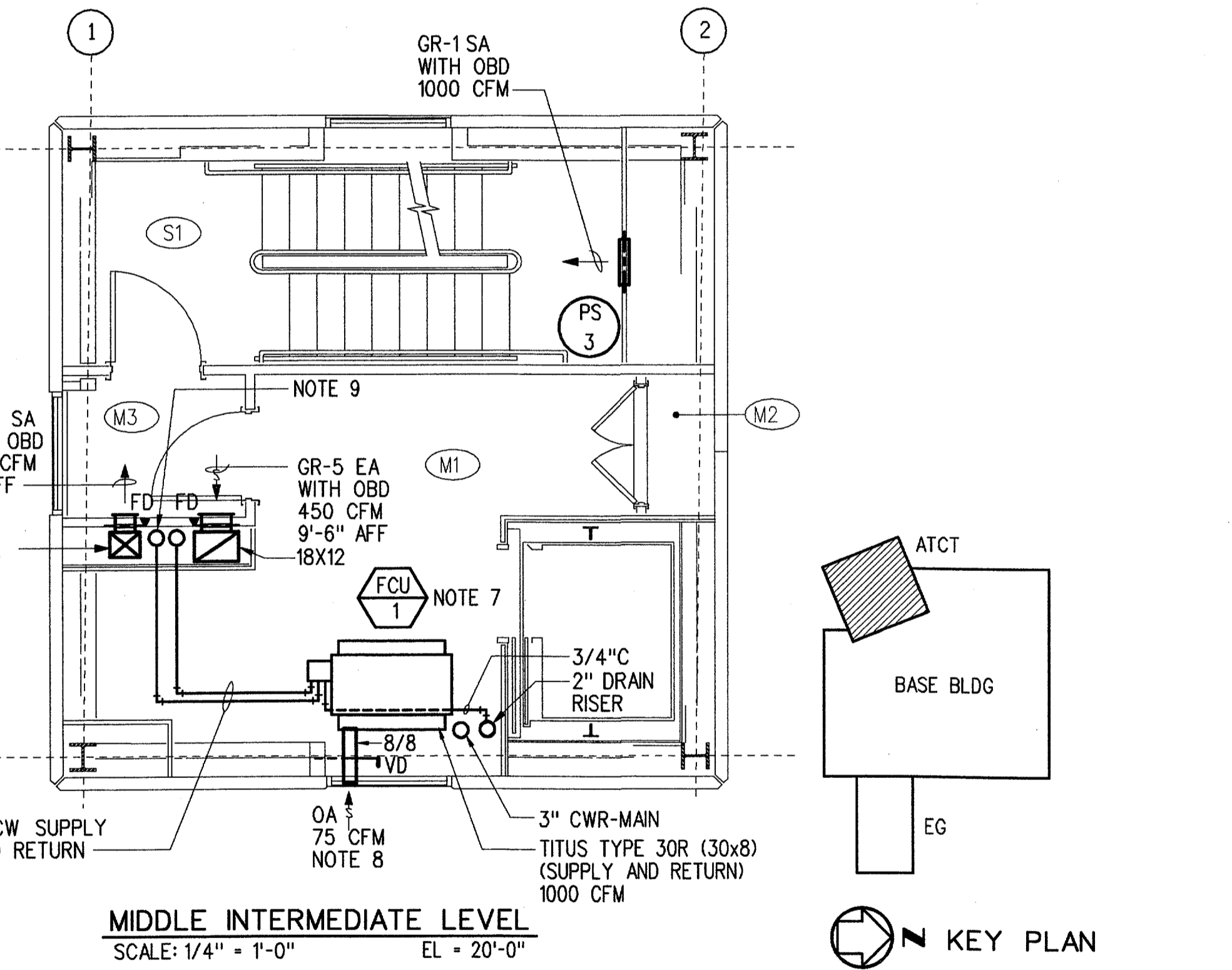


THIS DRAWING PRODUCED ON THE SOUTHWEST REGION MICROSTATION SYSTEM



RM NO.	ROOM NAME
G1	LOBBY
G2	ELEVATOR MACHINE ROOM
G3	STAIR PRESSURIZATION
L1	UNASSIGNED
L2	CABLE CHASE
L3	VESTIBULE
M1	ELECTRICAL EQUIPMENT
M2	CABLE CHASE
M3	VESTIBULE
T1	ELECTRONIC EQUIPMENT
T2	CABLE CHASE
T3	VESTIBULE
J1	CORRIDOR
J2	CABLE CHASE
J3	RESTROOM
J4	VESTIBULE
S1	STAIR

- NOTES:**
- FOR GENERAL NOTES, SEE DRAWING M001-A.
 - PROVIDE AND INSTALL 1 1/2 HOUR RATED FIRE DAMPER AT EF-3 CEILING GRILLE.
 - PROVIDE AND INSTALL CONTROL DAMPER AT WALL LOUVER. CONTROL DAMPER SHALL BE INTERLOCKED WITH THE DDCP AND FIRE CONTROL SYSTEM. DAMPER SHALL OPEN IN FIRE MODE. SEE ARCH. DWGS AND SECTION "F" ON DWG M011-A FOR EXACT LOCATION OF INTAKE LOUVER.
 - ROUTE DUCTWORK DIRECTLY BELOW THE ELECTRICAL CABLE TRAY. THE OUTSIDE EDGES OF TRAY SHALL BE BEYOND THE DUCTWORK. DO NOT SUPPORT DUCTWORK FROM CABLE TRAY.
 - SVF-1 FAN TO DUCT TRANSITION: 10X6 OUTLET TO 12X12 DUCT ELBOW.
 - SVF-2 FAN TO DUCT TRANSITION: INLET 45° MAX; OUTLET, 30° MAX.
 - PROVIDE FCU WITH SUPPLY AND RETURN DUCT PLENUM. CONNECT OA TO RETURN PLENUM.
 - CONNECT OA DUCT TO LOUVER. BLANK-OFF AND INSULATE (5 1/2" BATT) INACTIVE SECTIONS OF LOUVER. REF ARCH. DRAWINGS.
 - CHILLED WATER RETURN, AND CHILLED WATER SUPPLY RISERS.



m:\asst\atct\active\add-d-act-m008-a.dgn
07/17/2003 04:53:57 PM kaom

A		06-23-03	FAA REDESIGN OF HVAC, JON 21874.	9700164	06-23-03
REV	DATE	DESCRIPTION		JCN	REDLINE DATE
DEPARTMENT OF TRANSPORTATION FEDERAL AVIATION ADMINISTRATION FORT WORTH IMPLEMENTATION CENTER FORT WORTH, TX LOW ACTIVITY LEVEL ATCT HVAC FLOOR PLANS					
ADDISON		ADDISON AIRPORT		TX	
REVIEWED BY	SUBMITTED BY	APPROVED BY			
	<i>M. Doerr</i> 7/21/03	<i>Johnnie L. White</i> 7/18/03			
PROJECT ENGINEER, ANI-630	PLATFORM MANAGER, ANI-630				
DESIGNED	ISSUED BY	DATE		JCN	9700164
DRAWN	M. DOERR	06-23-03			
CHECKED	LTM	NAS IMPLEMENTATION ANI-600	DRAWING NO	9700164	REV
			ADS-D-ATCT-M006		A

