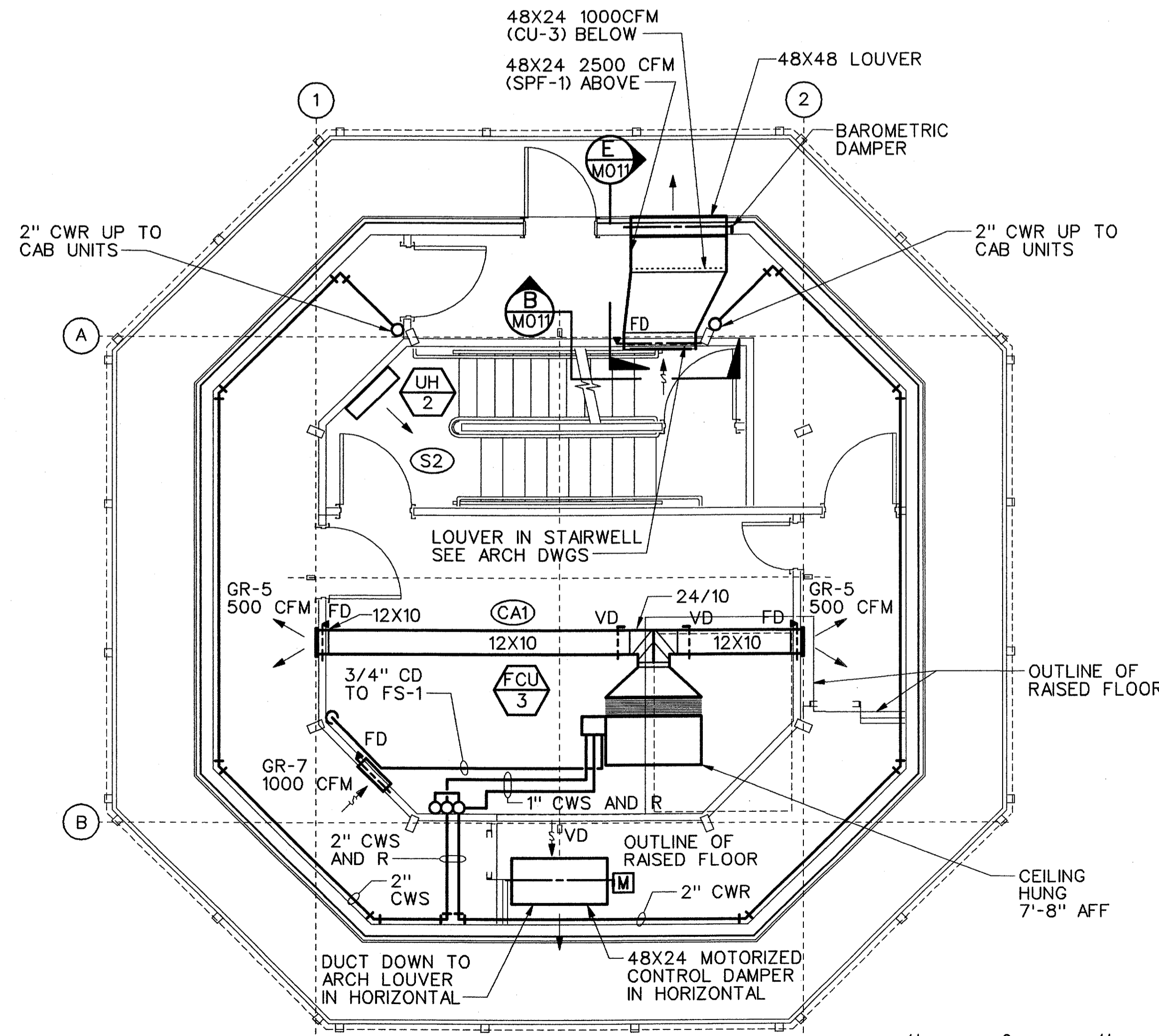
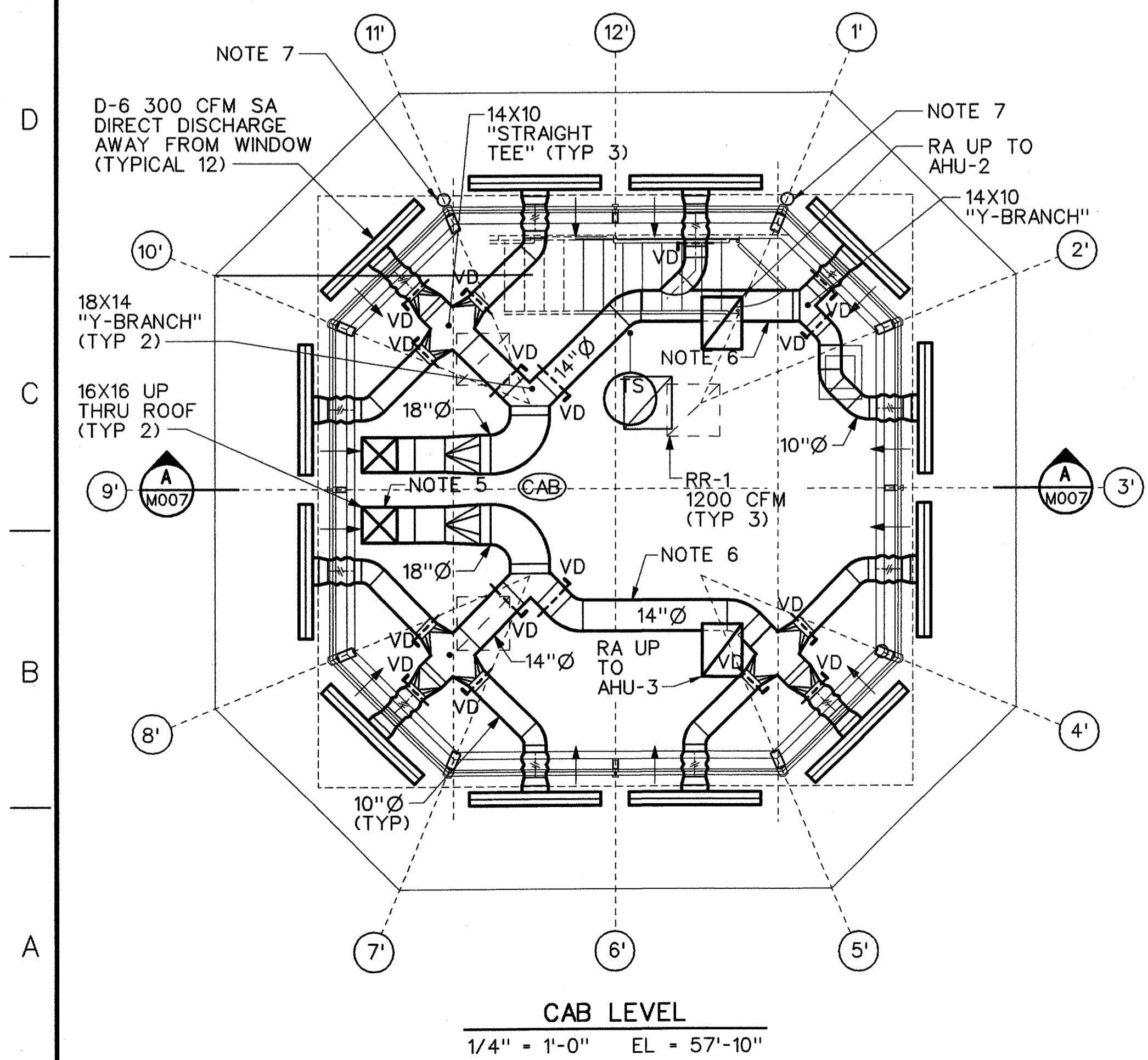
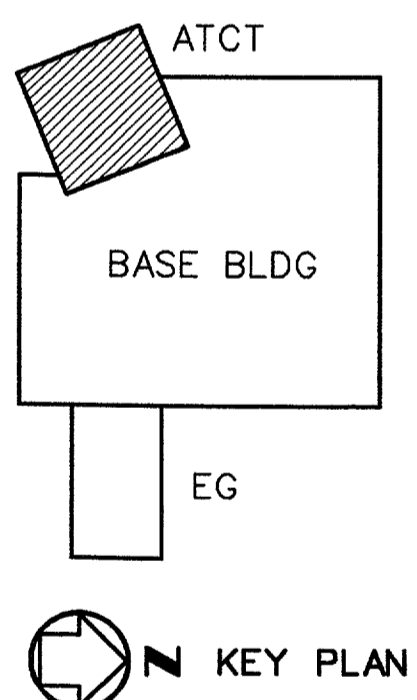


- NOTES:**
1. FOR GENERAL NOTES, SEE DRAWING M001.
 2. PROVIDE 2 INCH ACOUSTICAL LINING FOR ALL RETURN AIR DUCTWORK.
 3. NOT USED.
 4. PROVIDE LOW LEAKAGE DAMPERS.
 5. PROVIDE 2 INCH ACOUSTICAL LINING FOR ALL RECTANGULAR SUPPLY AIR DUCTWORK.
 6. PROVIDE DOUBLE-WALL PERFORATED ROUND DUCTWORK WITH 1 INCH LINING FOR INTERIOR SUPPLY AIR SYSTEM.
 7. CWS AND R IN EXTERIOR MULLION CAP. REFERENCE ARCHITECTURAL DRAWINGS.
 8. REMOTE, SCR CONTROL PANEL FOR EDH-4 AND EDH-5.



ROOM SCHEDULE

RM NO.	ROOM NAME
CA1	CABLE ACCESS
CAB	CAB
S2	CAB STAIR



A 06-23-03		FAA REDESIGN OF HVAC, JON 21874.	9700164	06-23-03
REV	DATE	DESCRIPTION	JCN	REDLINE DATE
DEPARTMENT OF TRANSPORTATION FEDERAL AVIATION ADMINISTRATION FORT WORTH IMPLEMENTATION CENTER FORT WORTH, TX LOW ACTIVITY LEVEL ATCT HVAC FLOOR PLANS				
ADDISON		ADDISON AIRPORT TX		
REVIEWED BY	SUBMITTED BY	APPROVED BY		
	<i>Mike Owen 7/21/03</i>	<i>Johnnie L. White 7/18/03</i>		
DESIGNED	M. DOERR	ISSUED BY	PLATFORM MANAGER, ANI-630	
DRAWN	JM/LB	DATE	06-23-03	JCN
CHECKED		DRAWING NO.	9700164	REV
		NAS IMPLEMENTATION ANI-600	ADS-D-ATCT-M007	A

