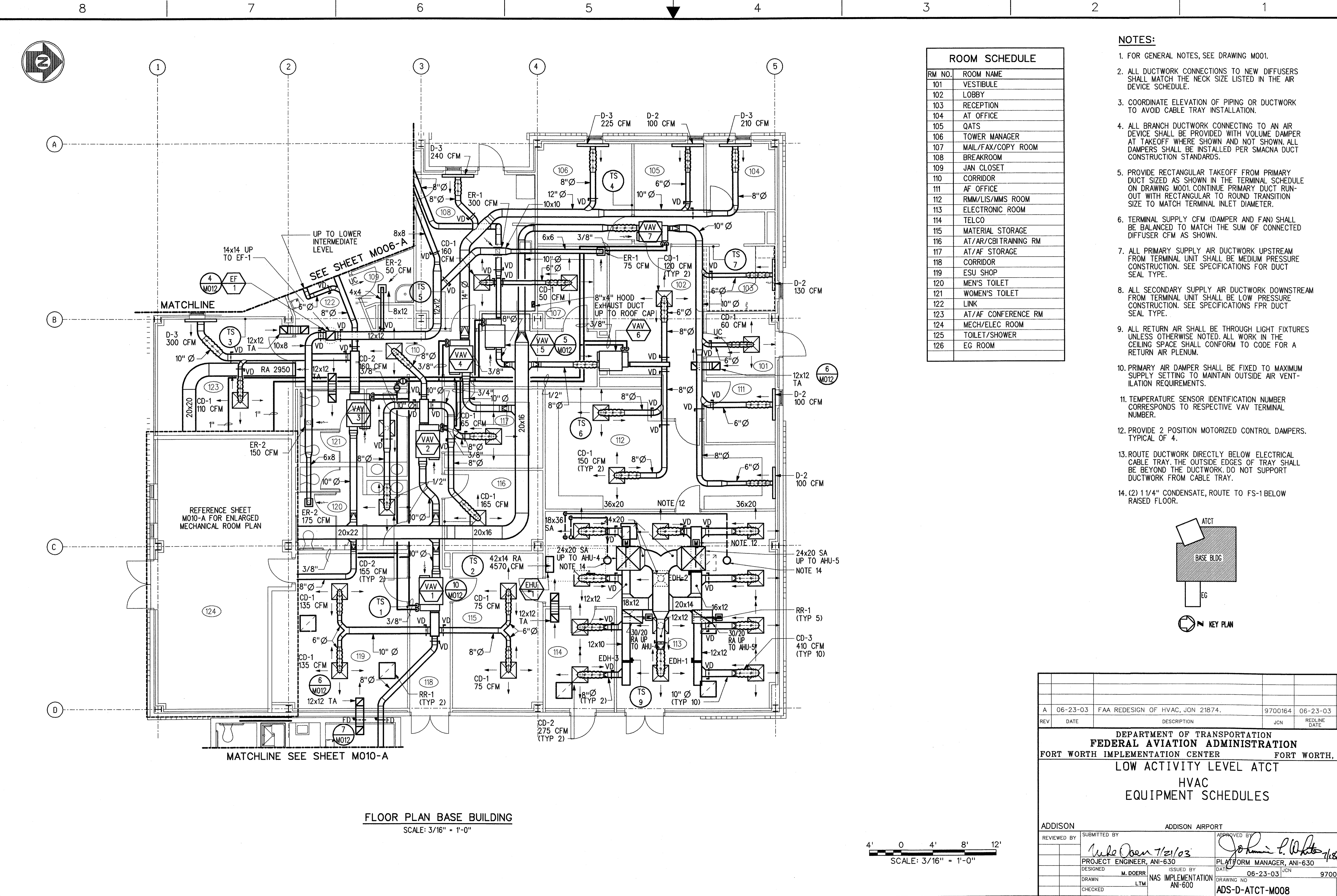
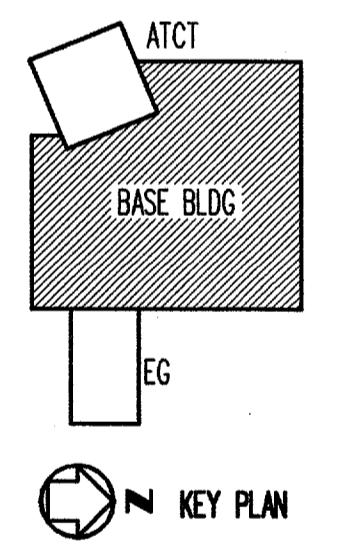


THIS DRAWING PRODUCED ON THE SOUTHWEST REGION MICROSTATION SYSTEM



ROOM SCHEDULE	
RM NO.	ROOM NAME
101	VESTIBULE
102	LOBBY
103	RECEPTION
104	AT OFFICE
105	QATS
106	TOWER MANAGER
107	MAIL/FAX/COPY ROOM
108	BREAKROOM
109	JAN CLOSET
110	CORRIDOR
111	AF OFFICE
112	RMM/LIS/MMS ROOM
113	ELECTRONIC ROOM
114	TELCO
115	MATERIAL STORAGE
116	AT/AR/CBI TRAINING RM
117	AT/AF STORAGE
118	CORRIDOR
119	ESU SHOP
120	MEN'S TOILET
121	WOMEN'S TOILET
122	LINK
123	AT/AF CONFERENCE RM
124	MECH/ELEC ROOM
125	TOILET/SHOWER
126	EG ROOM

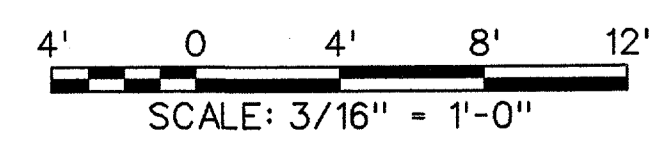
- NOTES:**
- FOR GENERAL NOTES, SEE DRAWING M001.
 - ALL DUCTWORK CONNECTIONS TO NEW DIFFUSERS SHALL MATCH THE NECK SIZE LISTED IN THE AIR DEVICE SCHEDULE.
 - COORDINATE ELEVATION OF PIPING OR DUCTWORK TO AVOID CABLE TRAY INSTALLATION.
 - ALL BRANCH DUCTWORK CONNECTING TO AN AIR DEVICE SHALL BE PROVIDED WITH VOLUME DAMPER AT TAKEOFF WHERE SHOWN AND NOT SHOWN. ALL DAMPERS SHALL BE INSTALLED PER SMACNA DUCT CONSTRUCTION STANDARDS.
 - PROVIDE RECTANGULAR TAKEOFF FROM PRIMARY DUCT SIZED AS SHOWN IN THE TERMINAL SCHEDULE ON DRAWING M001. CONTINUE PRIMARY DUCT RUN-OUT WITH RECTANGULAR TO ROUND TRANSITION SIZE TO MATCH TERMINAL INLET DIAMETER.
 - TERMINAL SUPPLY CFM (DAMPER AND FAN) SHALL BE BALANCED TO MATCH THE SUM OF CONNECTED DIFFUSER CFM AS SHOWN.
 - ALL PRIMARY SUPPLY AIR DUCTWORK UPSTREAM FROM TERMINAL UNIT SHALL BE MEDIUM PRESSURE CONSTRUCTION. SEE SPECIFICATIONS FOR DUCT SEAL TYPE.
 - ALL SECONDARY SUPPLY AIR DUCTWORK DOWNSTREAM FROM TERMINAL UNIT SHALL BE LOW PRESSURE CONSTRUCTION. SEE SPECIFICATIONS FOR DUCT SEAL TYPE.
 - ALL RETURN AIR SHALL BE THROUGH LIGHT FIXTURES UNLESS OTHERWISE NOTED. ALL WORK IN THE CEILING SPACE SHALL CONFORM TO CODE FOR A RETURN AIR PLENUM.
 - PRIMARY AIR DAMPER SHALL BE FIXED TO MAXIMUM SUPPLY SETTING TO MAINTAIN OUTSIDE AIR VENTILATION REQUIREMENTS.
 - TEMPERATURE SENSOR IDENTIFICATION NUMBER CORRESPONDS TO RESPECTIVE VAV TERMINAL NUMBER.
 - PROVIDE 2 POSITION MOTORIZED CONTROL DAMPERS. TYPICAL OF 4.
 - ROUTE DUCTWORK DIRECTLY BELOW ELECTRICAL CABLE TRAY. THE OUTSIDE EDGES OF TRAY SHALL BE BEYOND THE DUCTWORK. DO NOT SUPPORT DUCTWORK FROM CABLE TRAY.
 - (2) 1 1/4" CONDENSATE, ROUTE TO FS-1 BELOW RAISED FLOOR.



REFERENCE SHEET M010-A FOR ENLARGED MECHANICAL ROOM PLAN

MATCHLINE SEE SHEET M010-A

FLOOR PLAN BASE BUILDING
SCALE: 3/16" = 1'-0"



A		06-23-03	FAA REDESIGN OF HVAC, JON 21874.	9700164	06-23-03	
REV	DATE		DESCRIPTION	JCN	REDLINE DATE	APVD
DEPARTMENT OF TRANSPORTATION FEDERAL AVIATION ADMINISTRATION FORT WORTH IMPLEMENTATION CENTER FORT WORTH, TX LOW ACTIVITY LEVEL ATCT HVAC EQUIPMENT SCHEDULES						
ADDISON		ADDISON AIRPORT		TX		
REVIEWED BY	SUBMITTED BY	APPROVED BY				
	<i>Wade Owen 7/21/03</i>	<i>Johnnie L. White 7/21/03</i>				
PROJECT ENGINEER, ANI-630	PLM FORM MANAGER, ANI-630					
DESIGNED M. DOERR	ISSUED BY	DATE	06-23-03	JCN	9700164	REV
DRAWN LTM	NAS IMPLEMENTATION ANI-600	DRAWING NO				
CHECKED		ADS-D-ATCT-M008				A

m:\sda\atct\active\ads-d-atct-m008-a.dgn 07/17/2003 04:54:02 PM hssm