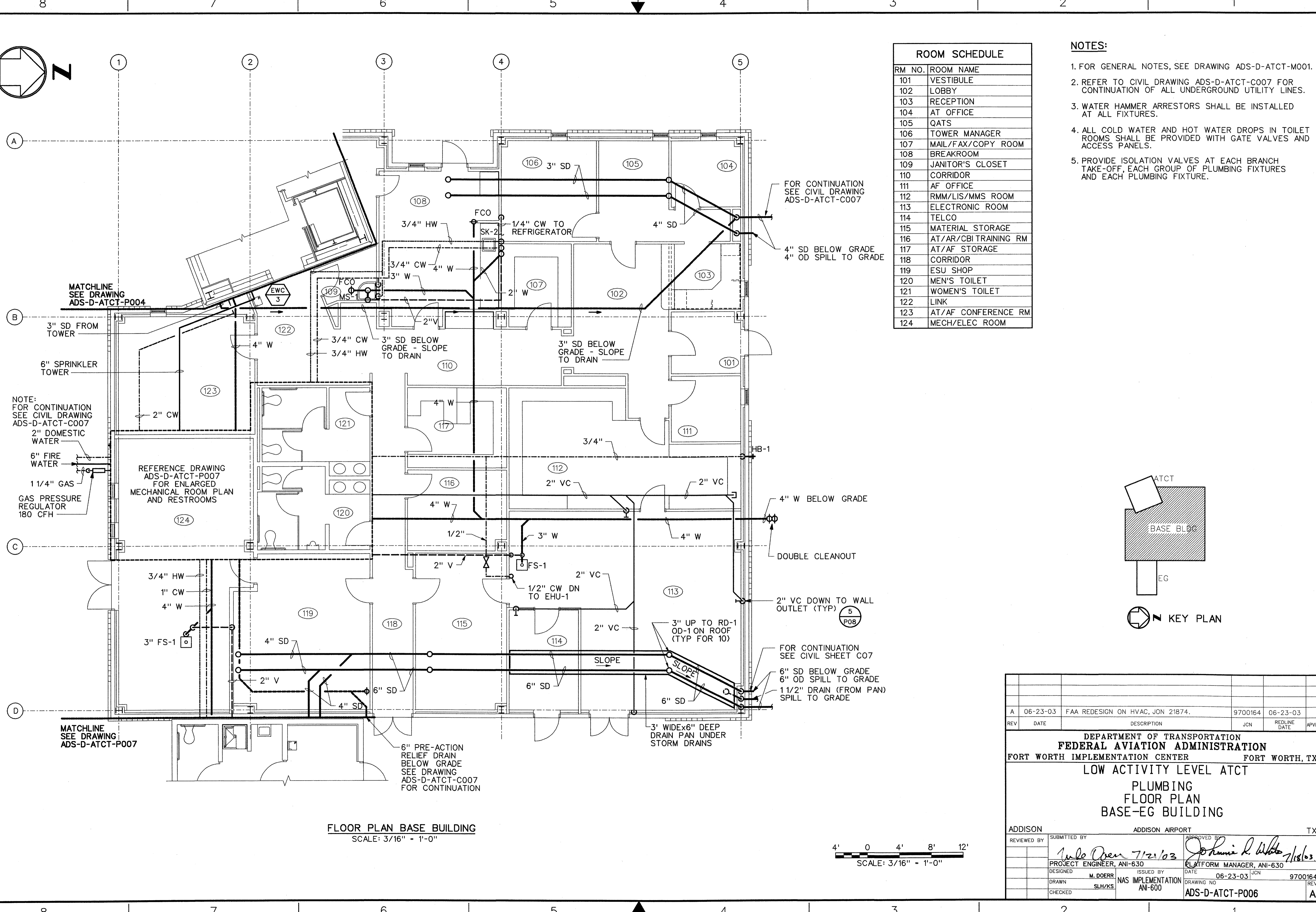
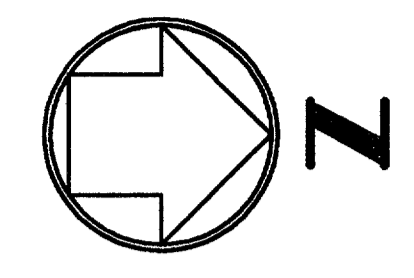


THIS DRAWING PRODUCED ON THE SOUTHWEST REGION MICROSTATION SYSTEM



ROOM SCHEDULE	
RM NO.	ROOM NAME
101	VESTIBULE
102	LOBBY
103	RECEPTION
104	AT OFFICE
105	QATS
106	TOWER MANAGER
107	MAIL/FAX/COPY ROOM
108	BREAKROOM
109	JANITOR'S CLOSET
110	CORRIDOR
111	AF OFFICE
112	RMM/LIS/MMS ROOM
113	ELECTRONIC ROOM
114	TELCO
115	MATERIAL STORAGE
116	AT/AR/CBI TRAINING RM
117	AT/AF STORAGE
118	CORRIDOR
119	ESU SHOP
120	MEN'S TOILET
121	WOMEN'S TOILET
122	LINK
123	AT/AF CONFERENCE RM
124	MECH/ELEC ROOM

- NOTES:**
- FOR GENERAL NOTES, SEE DRAWING ADS-D-ATCT-M001.
 - REFER TO CIVIL DRAWING ADS-D-ATCT-C007 FOR CONTINUATION OF ALL UNDERGROUND UTILITY LINES.
 - WATER HAMMER ARRESTORS SHALL BE INSTALLED AT ALL FIXTURES.
 - ALL COLD WATER AND HOT WATER DROPS IN TOILET ROOMS SHALL BE PROVIDED WITH GATE VALVES AND ACCESS PANELS.
 - PROVIDE ISOLATION VALVES AT EACH BRANCH TAKE-OFF, EACH GROUP OF PLUMBING FIXTURES AND EACH PLUMBING FIXTURE.

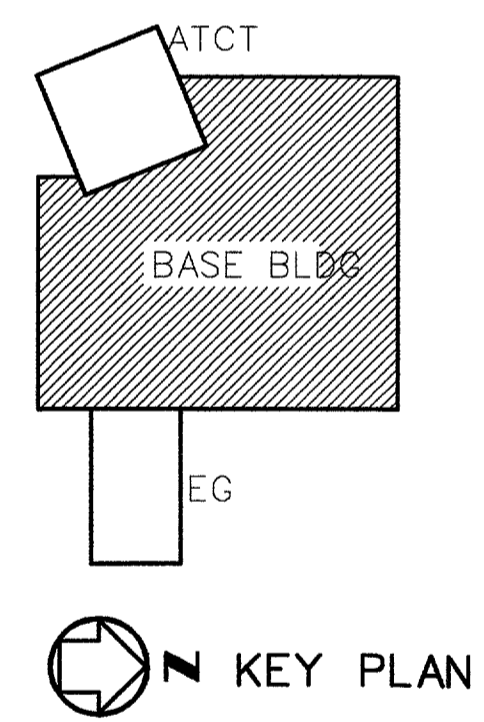
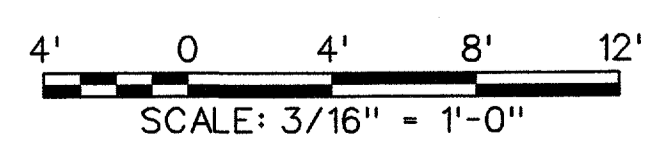
MATCHLINE
SEE DRAWING
ADS-D-ATCT-P004

NOTE:
FOR CONTINUATION
SEE CIVIL DRAWING
ADS-D-ATCT-C007
2" DOMESTIC
WATER
6" FIRE
WATER
1 1/4" GAS
GAS PRESSURE
REGULATOR
180 CFH

REFERENCE DRAWING
ADS-D-ATCT-P007
FOR ENLARGED
MECHANICAL ROOM PLAN
AND RESTROOMS

MATCHLINE
SEE DRAWING
ADS-D-ATCT-P007

FLOOR PLAN BASE BUILDING
SCALE: 3/16" = 1'-0"



REV	DATE	DESCRIPTION	JCN	REDLINE DATE	APVD
A	06-23-03	FAA REDESIGN ON HVAC, JON 21874.	9700164	06-23-03	

**DEPARTMENT OF TRANSPORTATION
FEDERAL AVIATION ADMINISTRATION
FORT WORTH IMPLEMENTATION CENTER FORT WORTH, TX**

**LOW ACTIVITY LEVEL ATCT
PLUMBING
FLOOR PLAN
BASE-EG BUILDING**

ADDISON	ADDISON AIRPORT	TX
REVIEWED BY	SUBMITTED BY	APPROVED BY
	<i>M. Doerr</i> 7/21/03	<i>Johnnie L. White</i> 7/16/03
DESIGNED	PROJECT ENGINEER, ANI-630	PLATFORM MANAGER, ANI-630
DRAWN	M. DOERR	DATE 06-23-03 JCN
CHECKED	SLH/KS	ISSUED BY
		DATE 06-23-03 JCN
		DRAWING NO. 9700164
		REV
		ANS IMPLEMENTATION ANI-600
		DRAWING NO. ADS-D-ATCT-P006
		REV

m:\data\active\addison\atct\p006-a.dgn
07/17/2003 04:54:29 PM isam