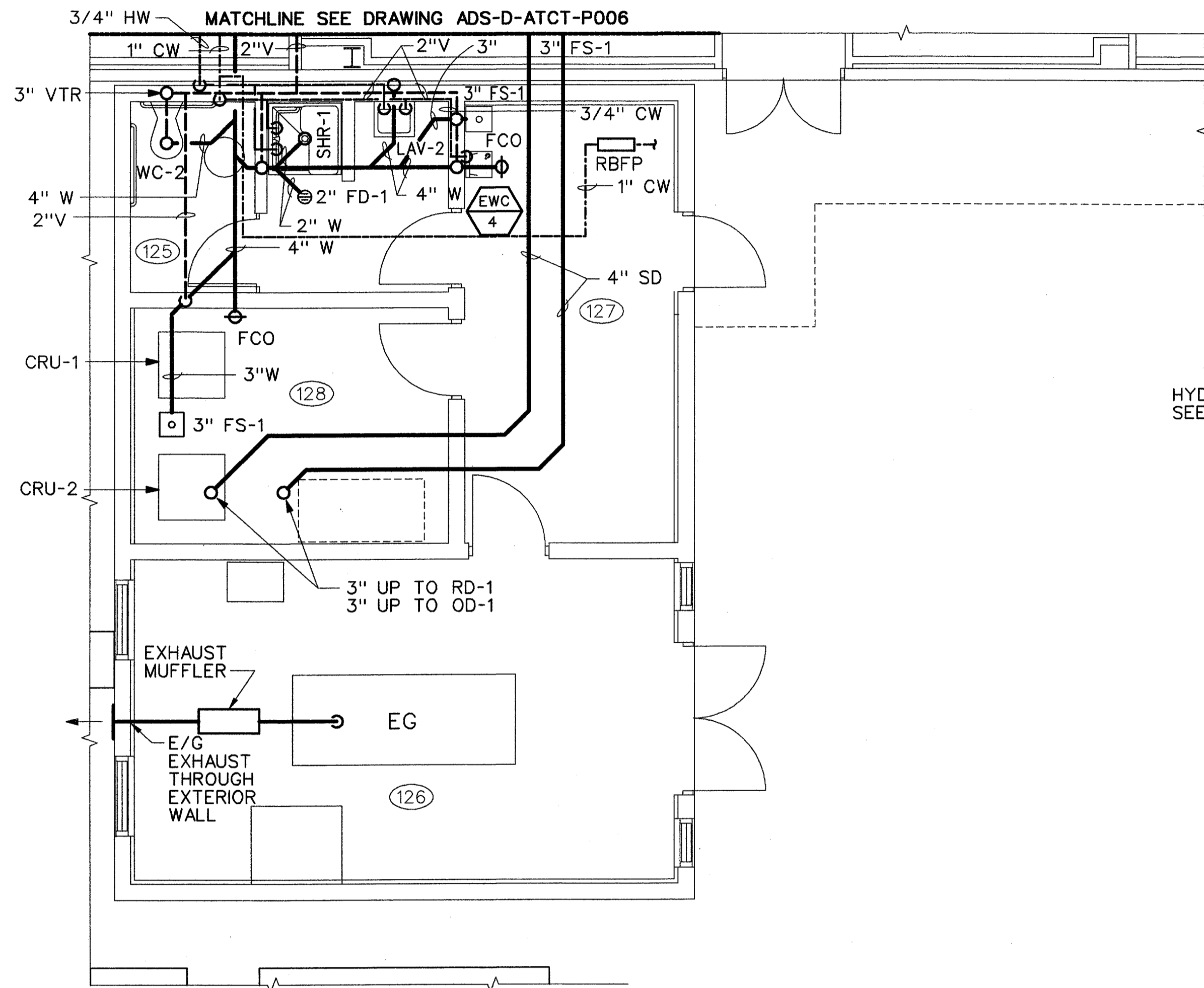
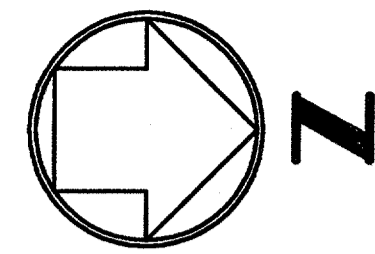


THIS DRAWING PRODUCED ON THE SOUTHWEST REGION MICROSTATION SYSTEM

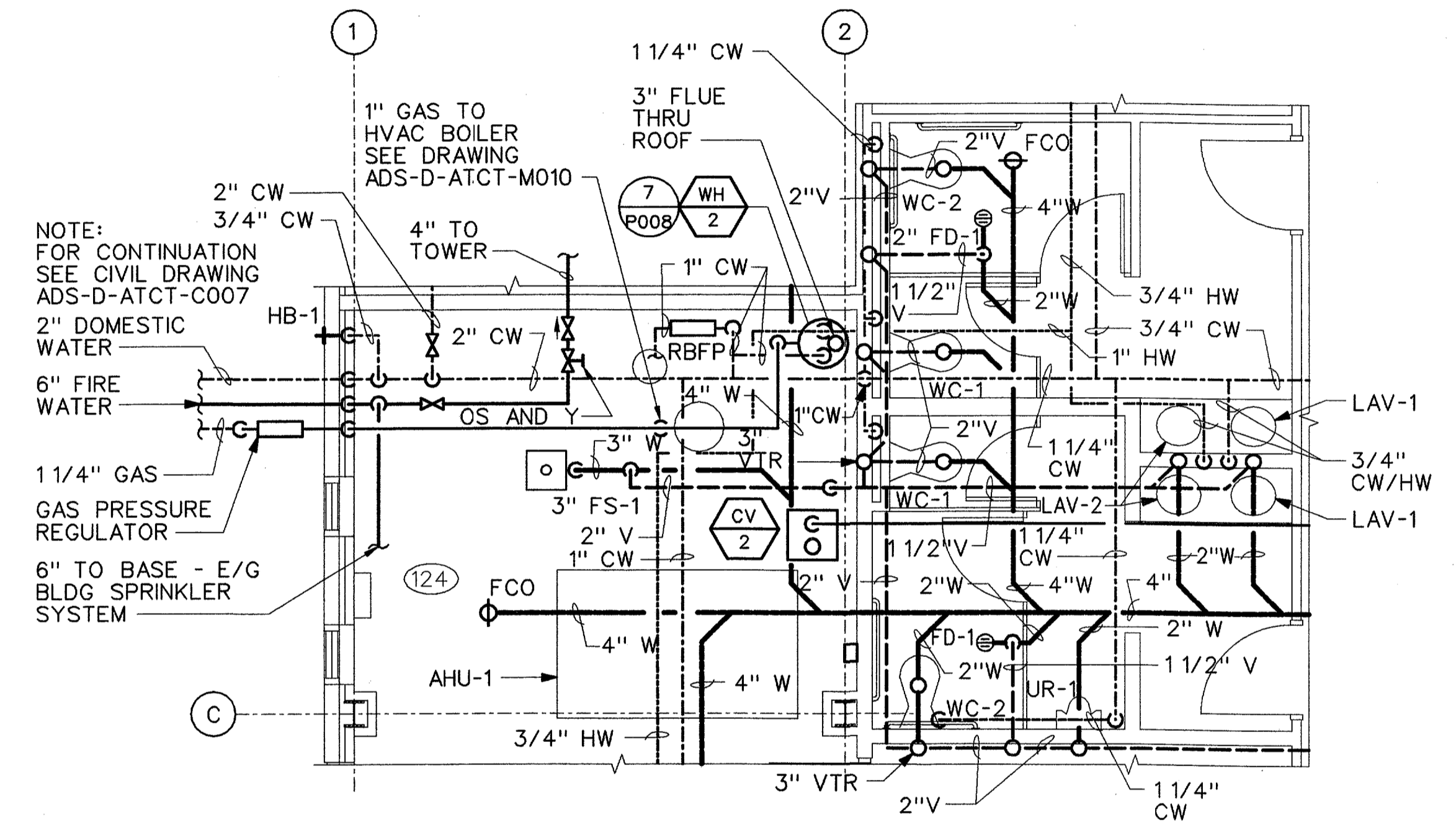
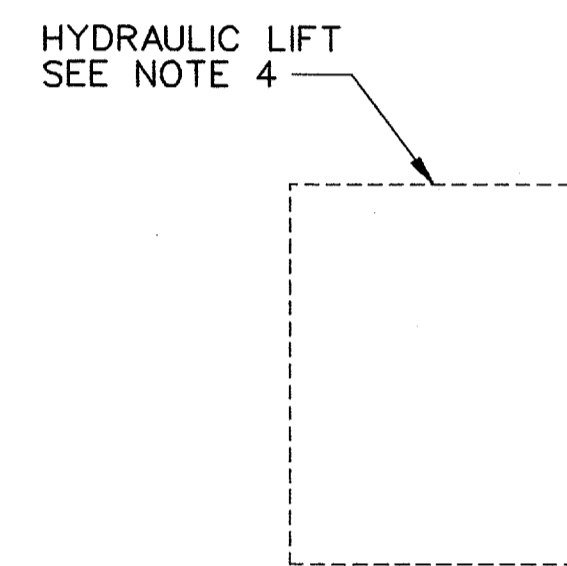


ENGINE GENERATOR BUILDING
SCALE: 1/4" = 1'-0"

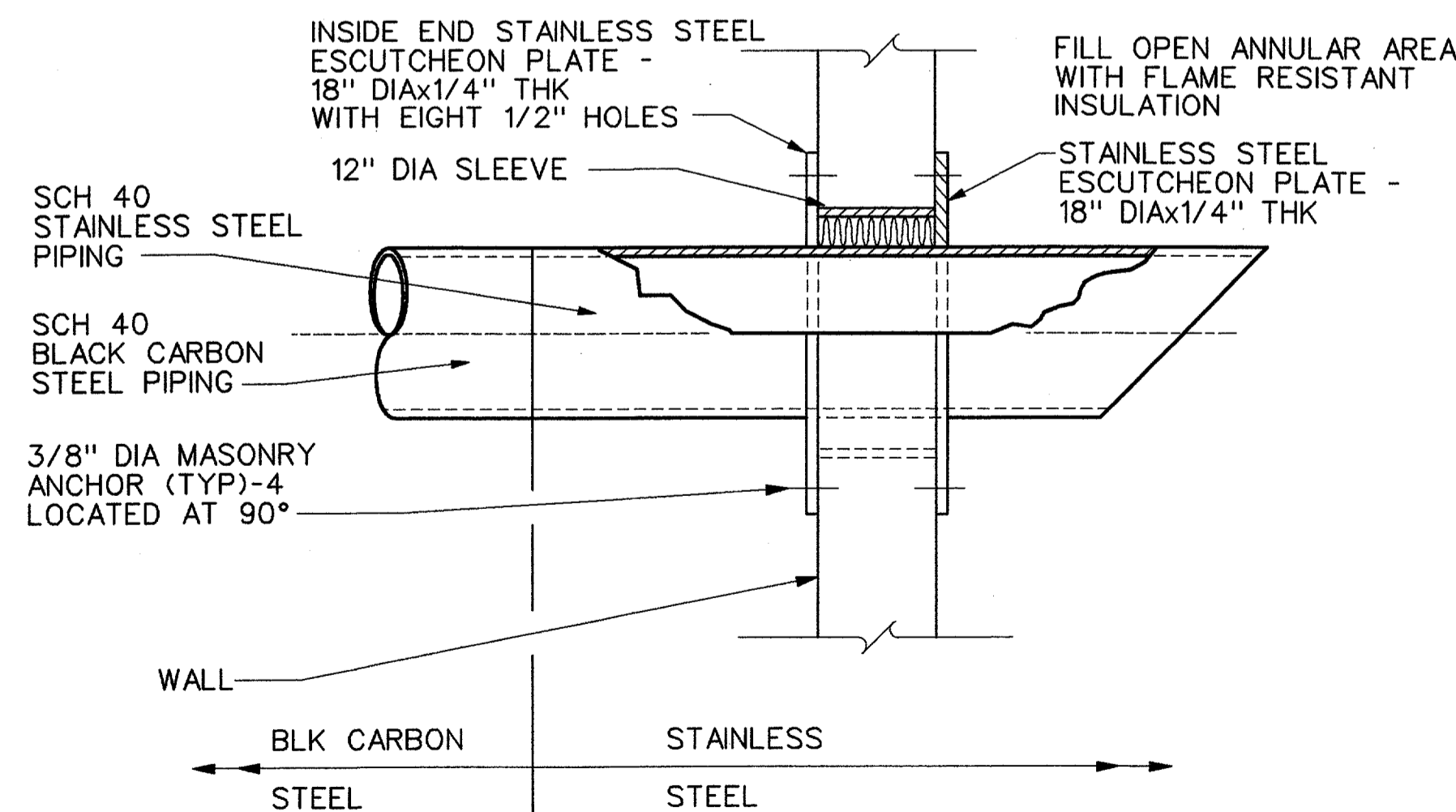
RM NO.	ROOM NAME
120	MEN'S TOILET
121	WOMEN'S TOILET
124	MECH/ELEC ROOM
125	TOILET/SHOWER
126	EG ROOM
127	WORKROOM
128	UPS

NOTES:

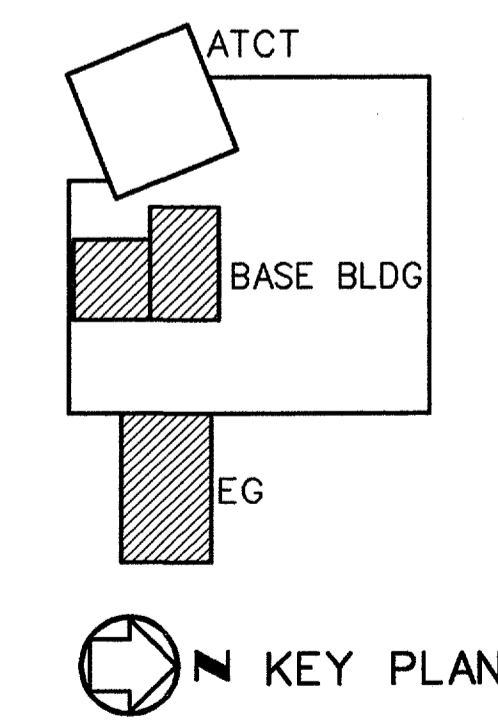
- FOR GENERAL NOTES, SEE DRAWING ADS-D-ATCT-M001.
- FOR RISER DIAGRAMS, SEE DRAWING ADS-D-ATCT-P002.
- PROVIDE ISOLATION VALVES AT EACH BRANCH TAKE-OFF, EACH GROUP OF PLUMBING FIXTURES, AND AT EACH PLUMBING FIXTURE.
- PROVIDE OIL INTERCEPTOR IN 6" DRAIN LINE SERVING HYDRAULIC LIFT. SEE DRAWING ADS-D-ATCT-C007 FOR DRAIN LOCATION AND PIPING CONNECTION.



ENLARGED MECHANICAL ROOM AND RESTROOMS - BASE BUILDING
SCALE: 1/4" = 1'-0"



1 EXHAUST PIPE WALL PENETRATION
NOT TO SCALE



SCALE: 1/4" = 1'-0"

REV	DATE	DESCRIPTION	JCN	REDLINE DATE	APVD
A	06-23-03	FAA REDESIGN OF HVAC, JON 21874.	9700164	06-23-03	

DEPARTMENT OF TRANSPORTATION
FEDERAL AVIATION ADMINISTRATION
FORT WORTH IMPLEMENTATION CENTER FORT WORTH, TX
LOW ACTIVITY LEVEL ATCT
PLUMBING
ENLARGED PLANS
BASE-EG BUILDING

ADDISON	ADDISON AIRPORT	TX
REVIEWED BY	SUBMITTED BY	APPROVED BY
	<i>M. Doerr</i> 7/21/03	<i>John L. White</i> 7/16/03
DESIGNED	PROJECT ENGINEER, ANI-630	PLATFORM MANAGER, ANI-630
DRAWN	M. DOERR	DATE 06-23-03 JCN
CHECKED	SLH/LTM	ISSUED BY
		DATE 06-23-03 JCN
		DRAWING NO
		9700164
		REV
		A

07/17/2003 04:54:31 PM kskom