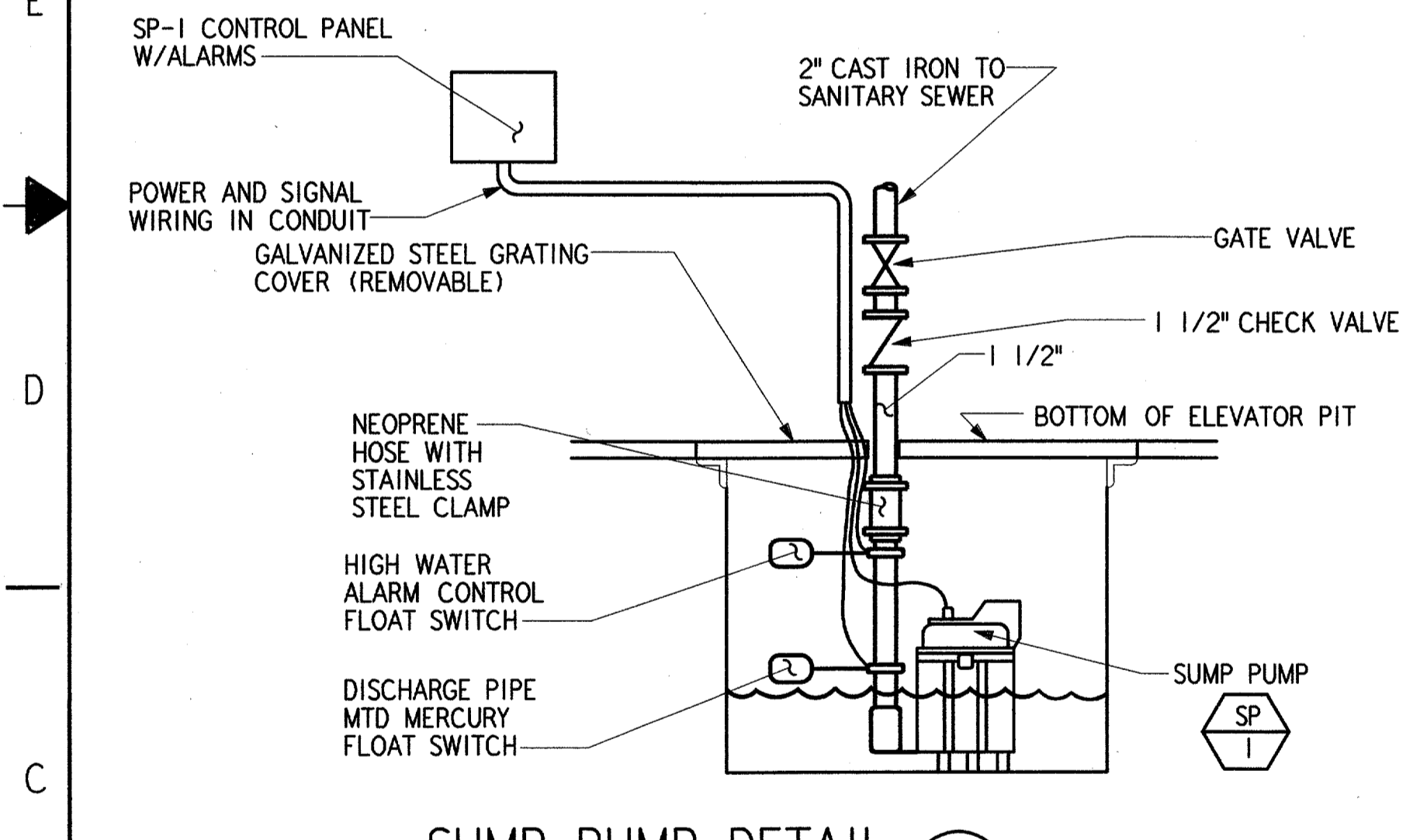
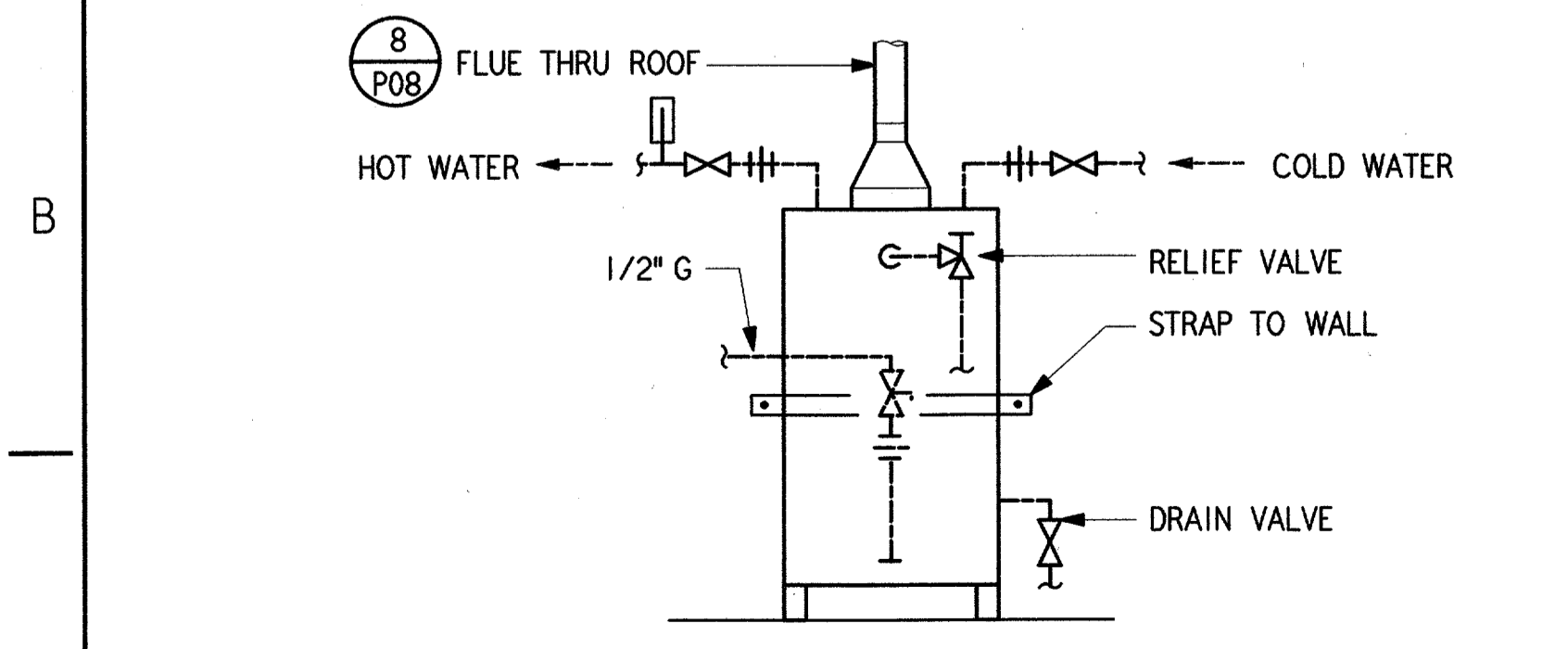


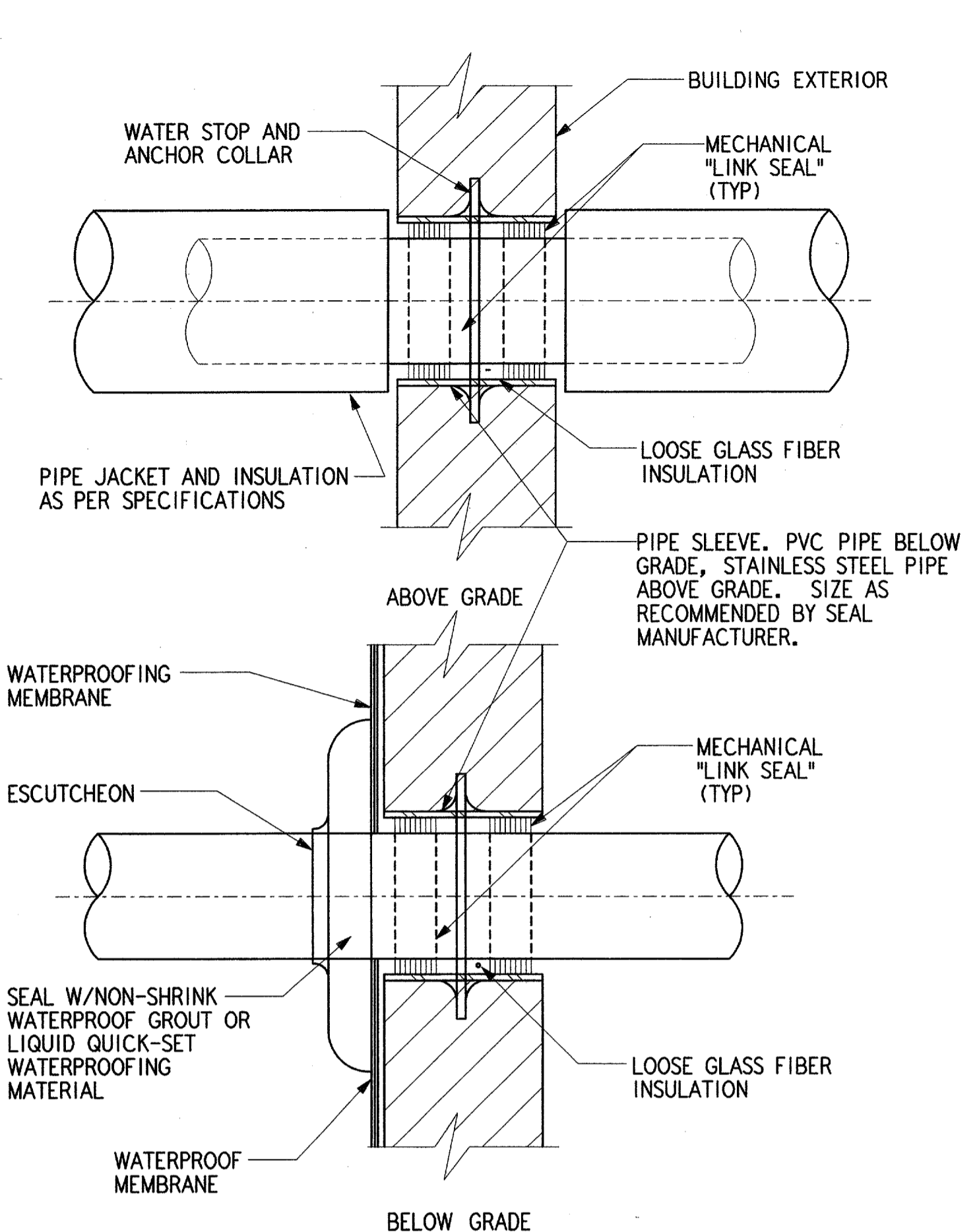
STORM DRAIN PIPING DETAIL (1) REF P05
NTS (P08)



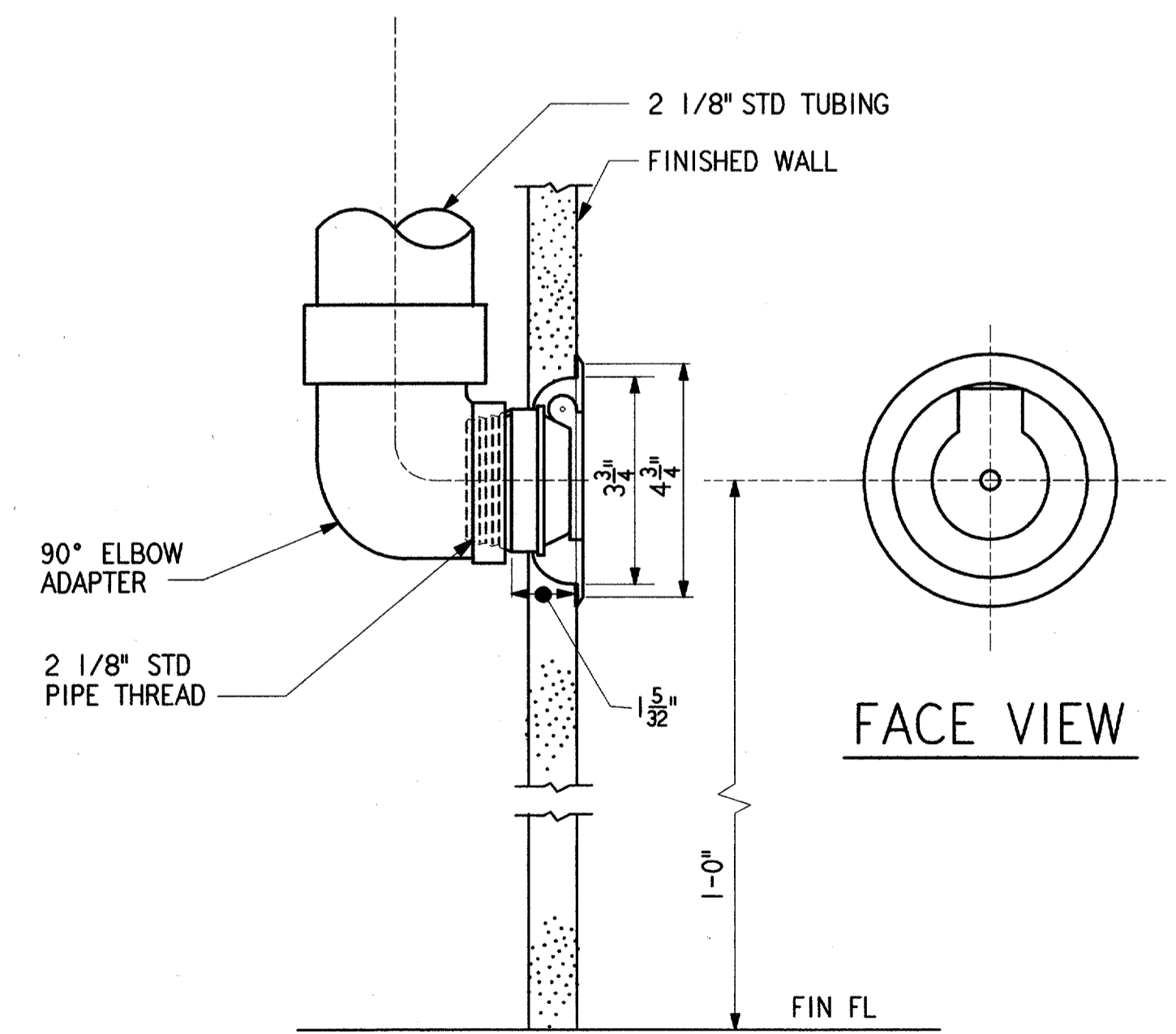
SUMP PUMP DETAIL (6) REF P04
NTS (P08)



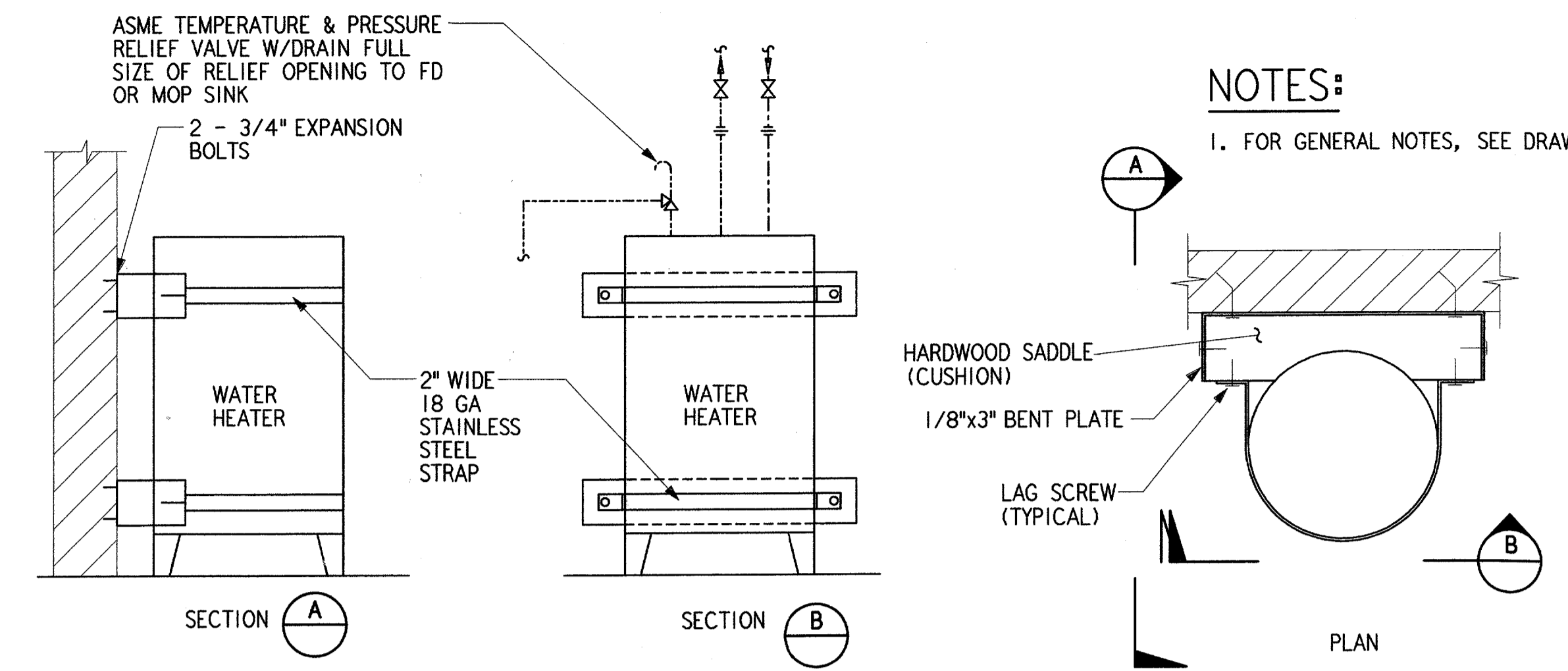
GAS WATER HEATER (7) REF P08
NTS (P08)



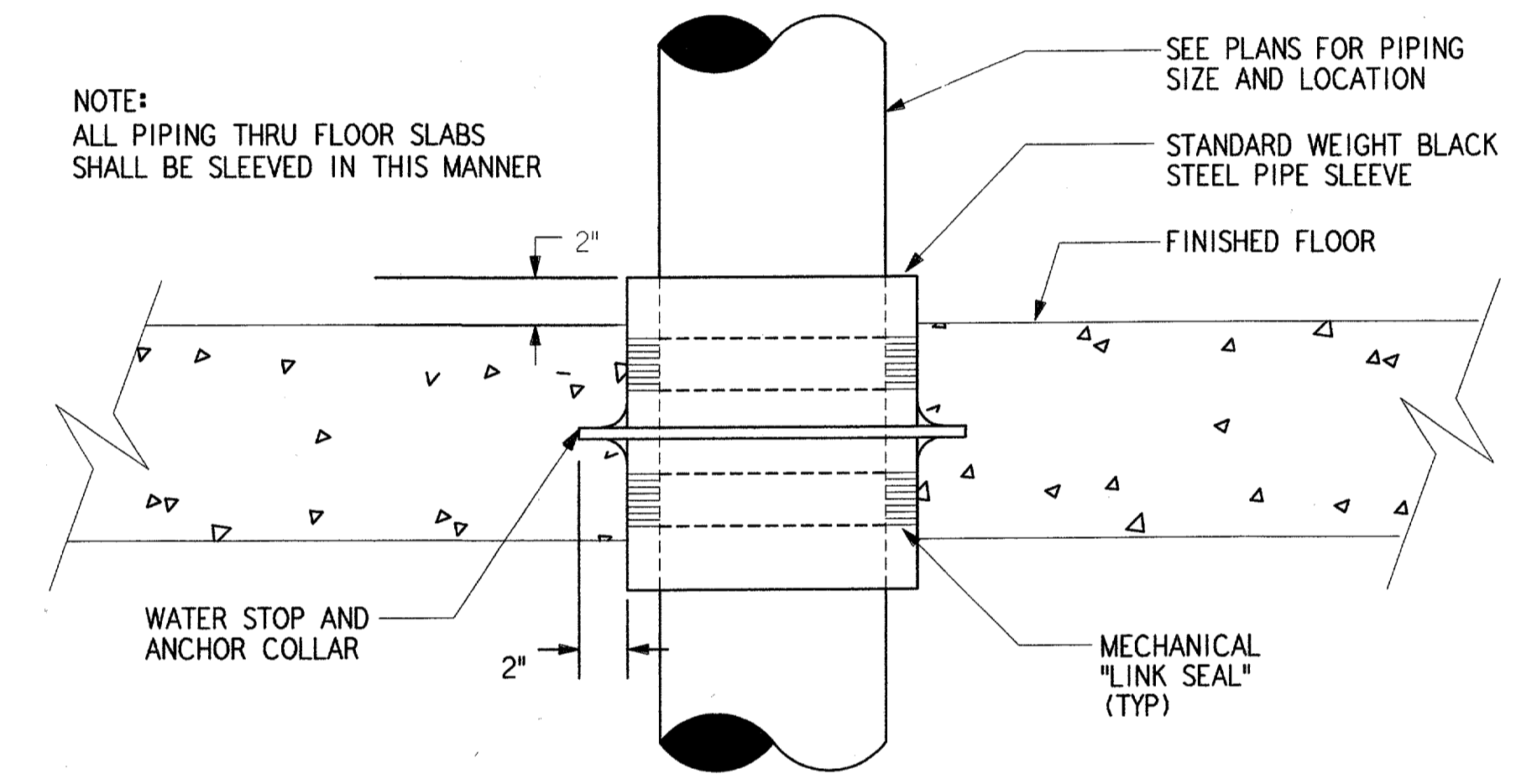
PIPE SLEEVE DETAIL (THRU EXTERIOR WALL) (2) REF P08
NTS (P08)



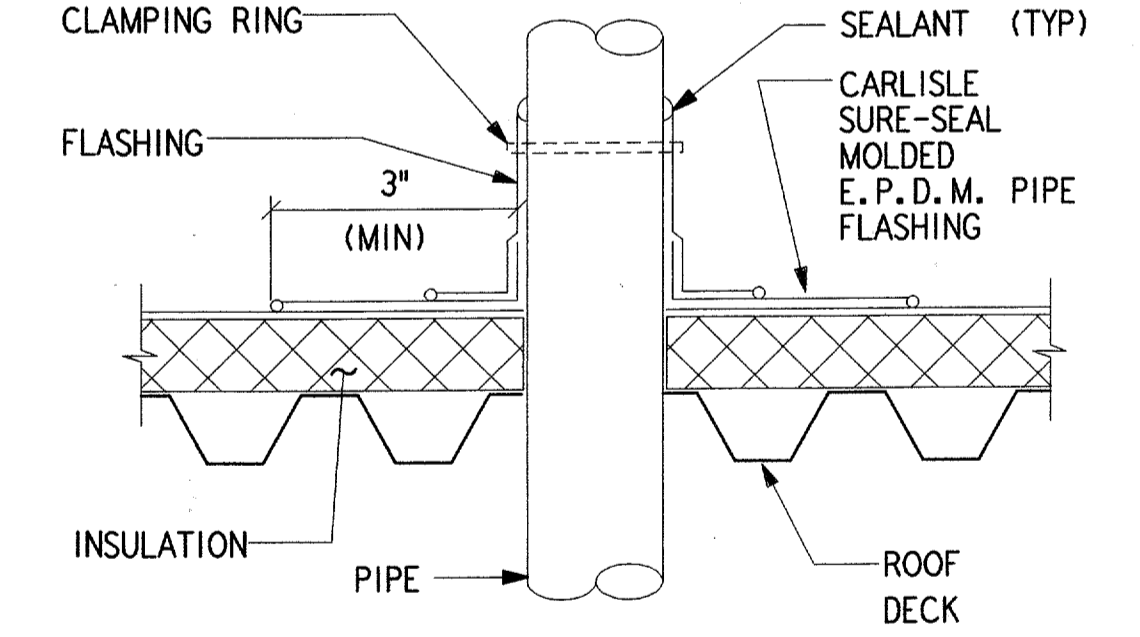
VACUUM CLEANING WALL INLET FLUSH TYPE (5) REF P06
NTS (P08)



WATER HEATER DETAIL (3) REF P05
NTS (P08)



PIPE SLEEVE DETAIL (4) REF P08
NTS (P08)



VENT PIPE THRU ROOF DETAIL (8) REF P08
NTS (P08)

NOTES:
1. FOR GENERAL NOTES, SEE DRAWING M01.

NOTES:
1. "LINK SEAL" IS A MODULAR MECHANICAL TYPE SEAL CONSISTING OF INTERLOCKING SYNTHETIC RUBBER LINKS, STAINLESS STEEL BOLTS AND PRESSURE PLATES.
2. PROVIDE HIGH IMPACT THERMOPLASTIC, OR STEEL SLEEVES RECOMMENDED BY THE SEAL MANUFACTURER.
3. PROVIDE FM APPROVED SEAL ASSEMBLIES THE SAME AS THE WALL RATING AND ASME-119-76 TESTED.

DAVID M. PFUNDT 79558 REGISTERED PROFESSIONAL ENGINEER STATE OF TEXAS 6-22-01		DALLAS, TX	

DEPARTMENT OF TRANSPORTATION FEDERAL AVIATION ADMINISTRATION SOUTHWEST REGION FORT WORTH, TEXAS			
LOW ACTIVITY LEVEL AIRPORT TRAFFIC CONTROL TOWER			
PLUMBING DETAILS (ADDISON AIRPORT)		TEXAS	
SUBMITTED BY <i>David M. Pfundt</i>	APPROVED BY <i>Johnnie A. White</i>	DATE: 06-22-01	DRAWING NUMBER: ADS-ATCT-P08
DESIGNED: M. NAJERA REVIEWED: D. PFUNDT ORIG. DFT.: J. MILLER FACILITY:	ISSUED BY AIRWAY FACILITIES DIVISION	MANAGER INFRASTRUCTURE PLATFORM, ANI-630	