

8

7

6

5

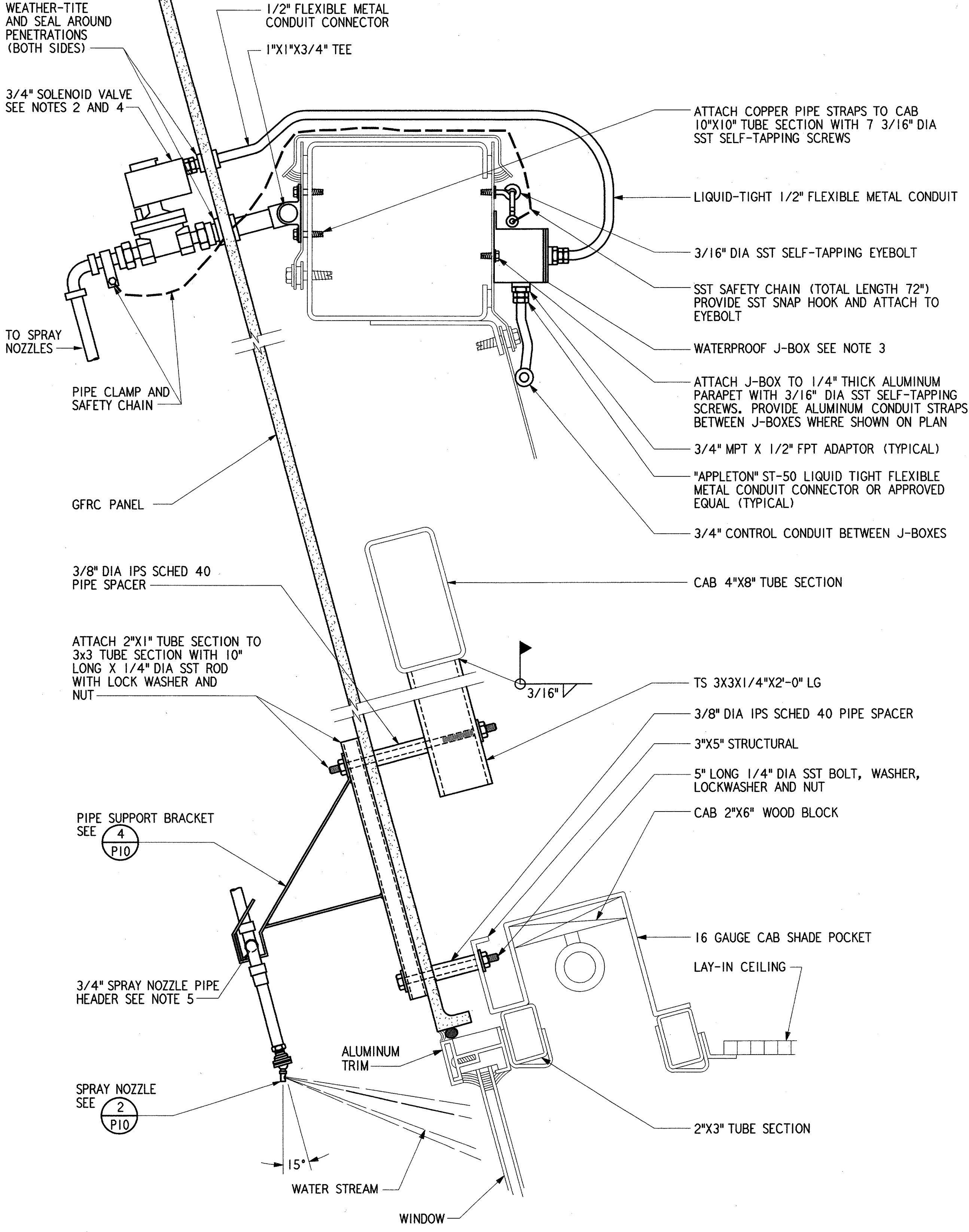
4

3

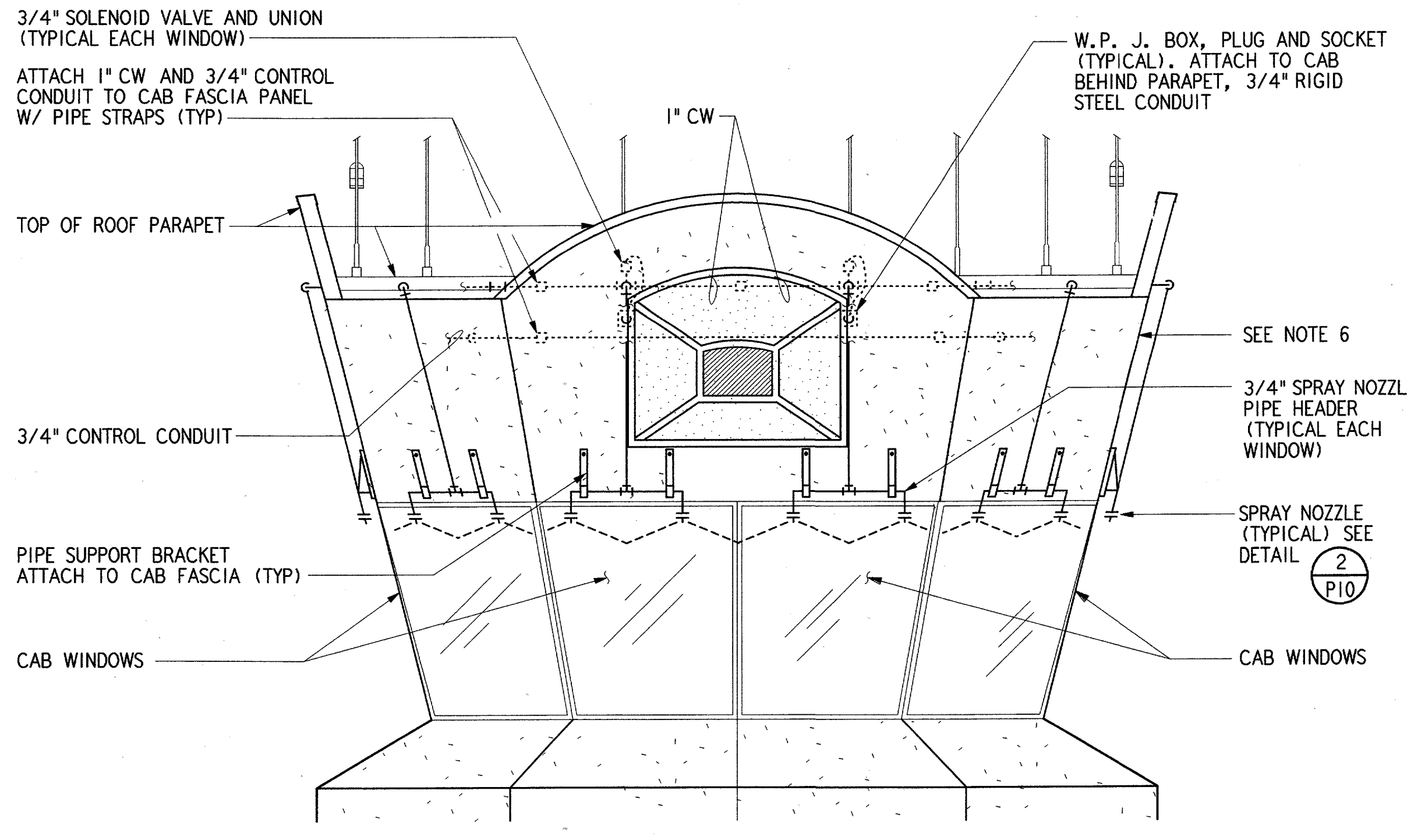
2

1

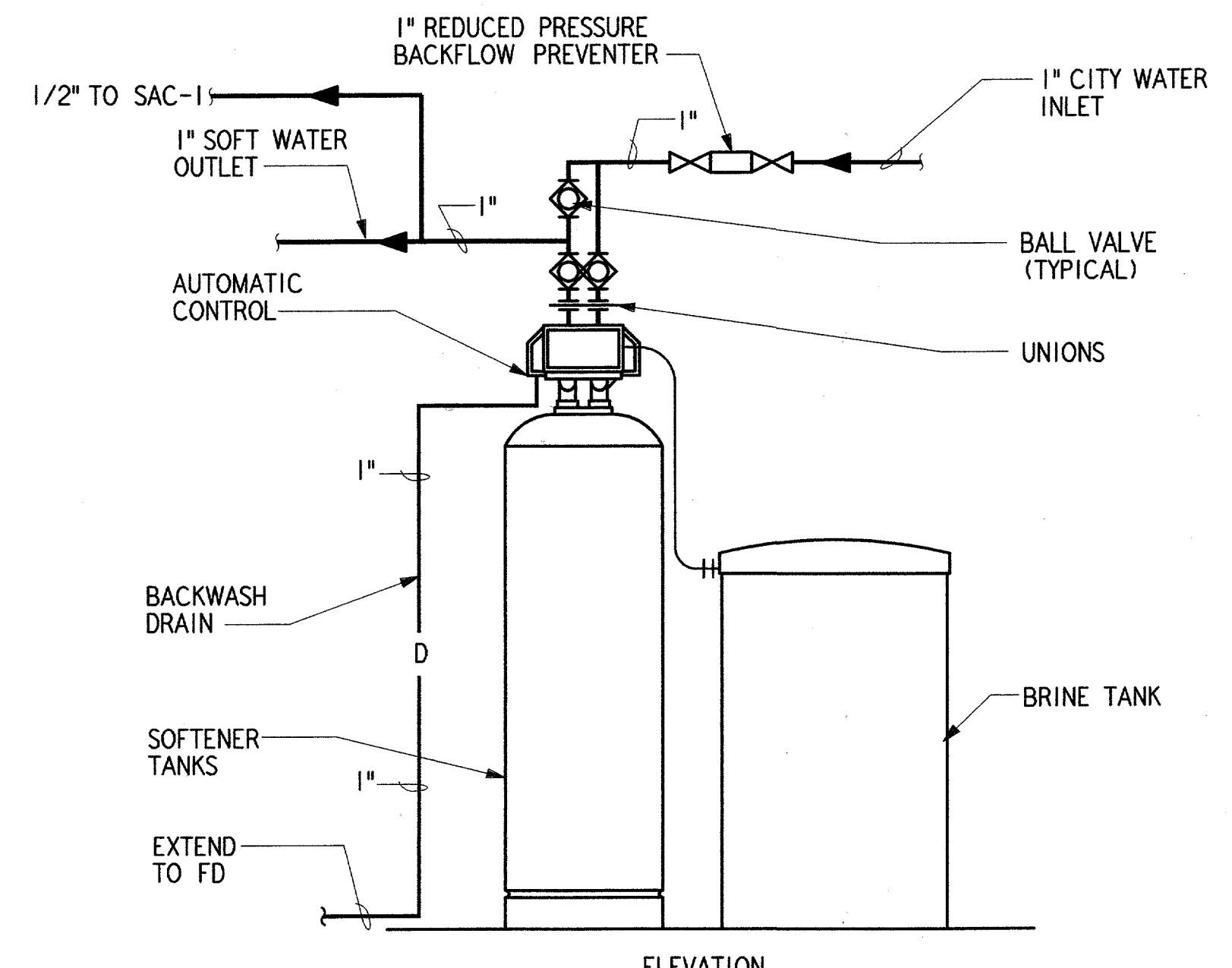
H  
G  
F  
E  
D  
C  
B  
A



SECTION **A** REF P09 P05  
3" = 1'-0"



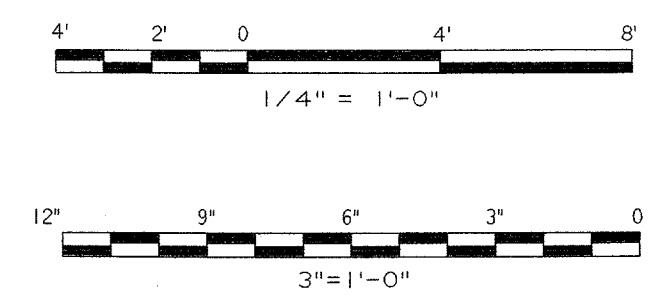
ELEVATION OF ONE SIDE OF ATCT CAB **B** REF P09 P05  
1/4" = 1'-0"



ELEVATION  
WATER SOFTENER DETAIL **1** REF P03 P05  
NTS

**NOTES:**

1. ALL EXPOSED EXTERIOR PIPING AND PIPE SUPPORTS SHALL BE CLEANED, PRIMED, AND PAINTED WITH EXTERIOR ENAMEL PAINT IN COLOR TO MATCH CAB FASCIA.
2. SOLENOID VALVE SHALL BE A 3/4" NORMALLY OPEN VALVE, "ASCO" NO. 8210G35-6 FULL PORTED, 24 VOLT, 0 DIFFERENTIAL OPERATING PRESSURE, BUNA-N SEAT, OR APPROVED EQUAL. VALVE BODY SHALL BE BRASS WITH WATERPROOF MOLDED SOLENOID COIL AND NEMA 4 WATERTIGHT COVER.
3. WEATHERPROOF JUNCTION BOX SHALL BE "APPLETON" MODEL FSCT-1-75-A CAST ALUMINUM BOX WITH 3/4" THREADED CONNECTIONS AND WATERTIGHT CAST ALUMINUM GASKETED COVER, OR APPROVED EQUAL.
4. LIQUID TIGHT FLEXIBLE METAL CONDUIT SHALL BE "ULTRATITE" - TYPE EF, OR APPROVED EQUAL.
5. THE SPRAY NOZZLE PIPE HEADER SHALL REST FIRMLY IN THE SUPPORT BRACKET WITHOUT INDUCING ROTATIONAL STRESS IN THE DISTRIBUTION SYSTEM.
6. PROVIDE A SPRAY NOZZLE HEADER, SUPPORT BRACKETS, PIPING, SOLENOID VALVE, CONTROL J-BOX, ETC., FOR EACH WINDOW OF CAB.
7. WATER SOFTENER, JWS INCORPORATED, OR APPROVED EQUAL, CAPACITY OF 8.5 GPM CONTINUOUS OR 15 GPM PEAK AT PRESSURE DROPS OF 8 PSI AND 17 PSI RESPECTIVELY.



DALLAS, TX		DALLAS, TX	

DEPARTMENT OF TRANSPORTATION FEDERAL AVIATION ADMINISTRATION SOUTHWEST REGION FORT WORTH, TEXAS			
LOW ACTIVITY LEVEL AIRPORT TRAFFIC CONTROL TOWER PLUMBING DEFOGGER DETAILS ATCT (ADDISON AIRPORT) TEXAS			
ADDISON SUBMITTED: <i>[Signature]</i> SYSTEMS ENGINEER, 61-630	APPROVED: <i>[Signature]</i> MANAGER INFRASTRUCTURE PLATFORM, ANI-630	DATE: 06-22-01	DRAWING NUMBER: <b>ADS-ATCT- P09</b>
DESIGNED: M. NAJERA REVIEWED: D. PFUNDT ORIG. DFT.: J. MILLER FACILITY:	ISSUED BY: AIRWAY FACILITIES DIVISION	DIVISION:	REF. DWG.:

P09

FILENAME = ads p009.dft