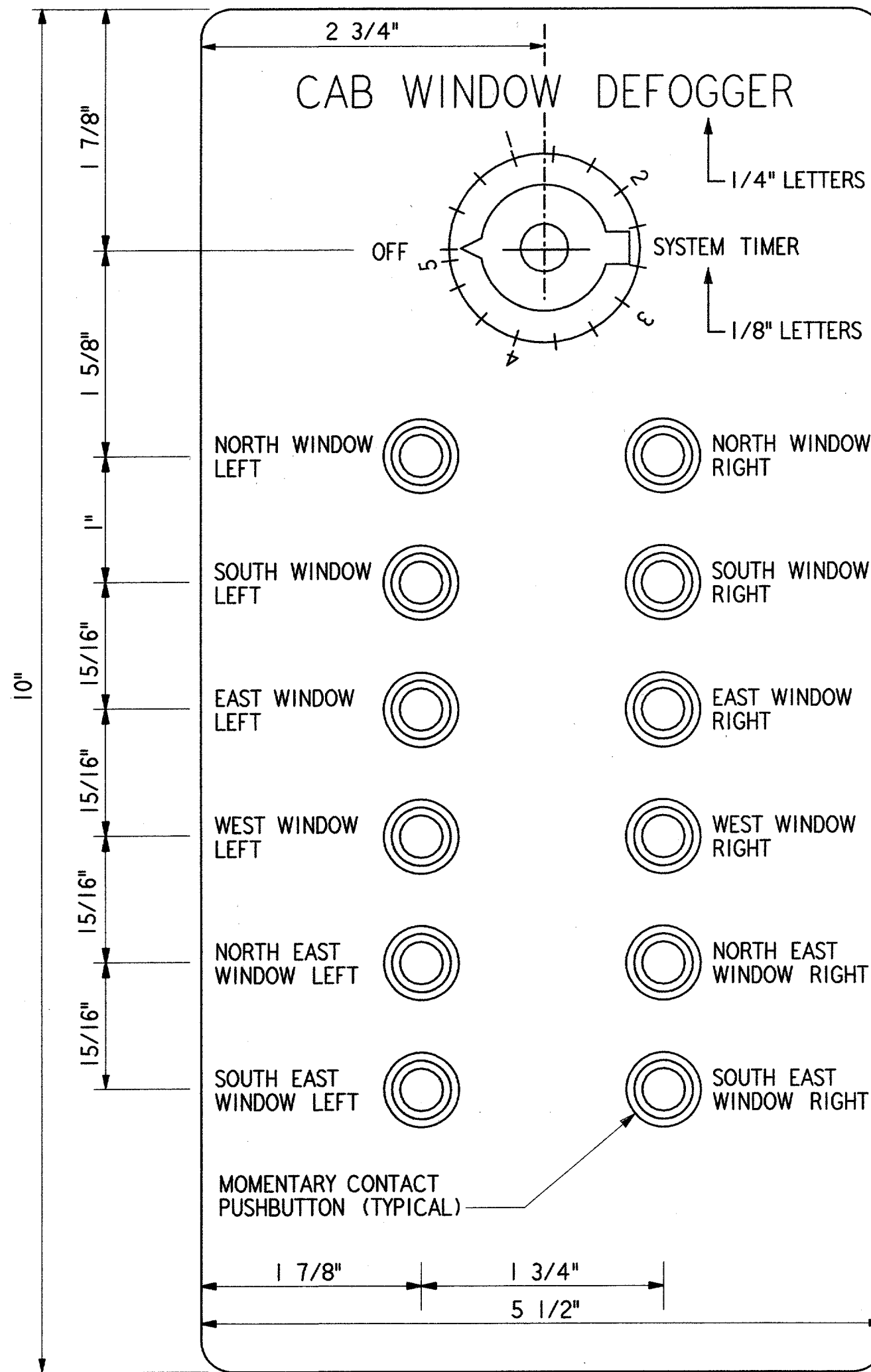


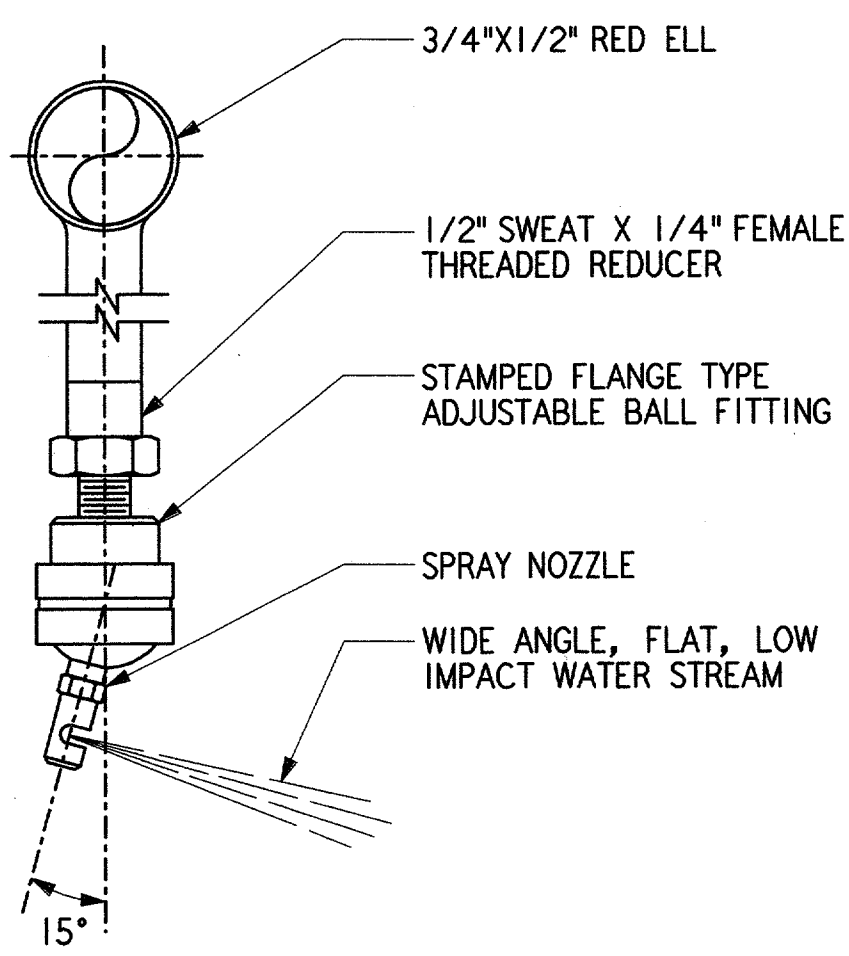
CONTROL DIAGRAM

NTS



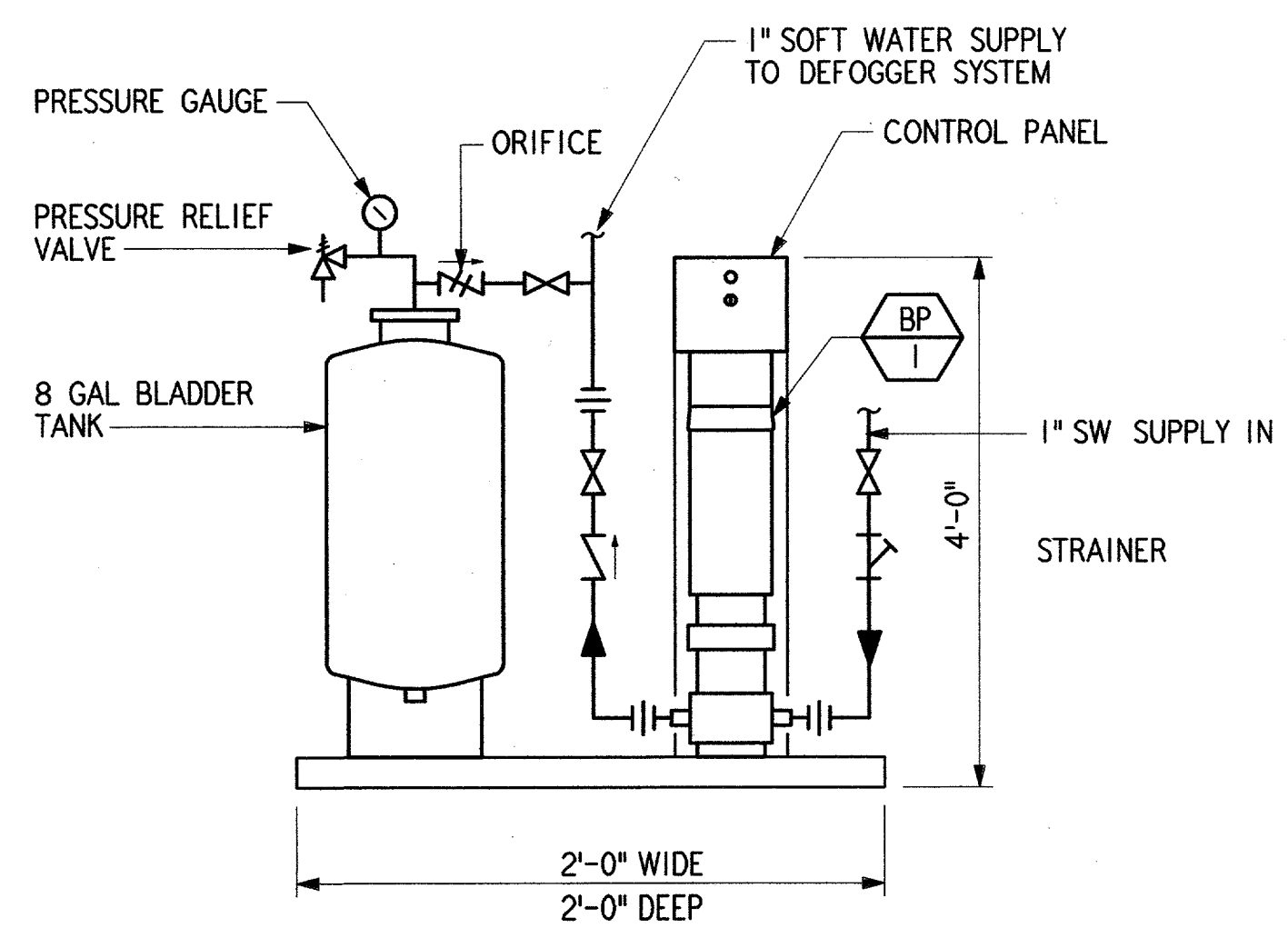
CAB SWITCH PANEL

NTS



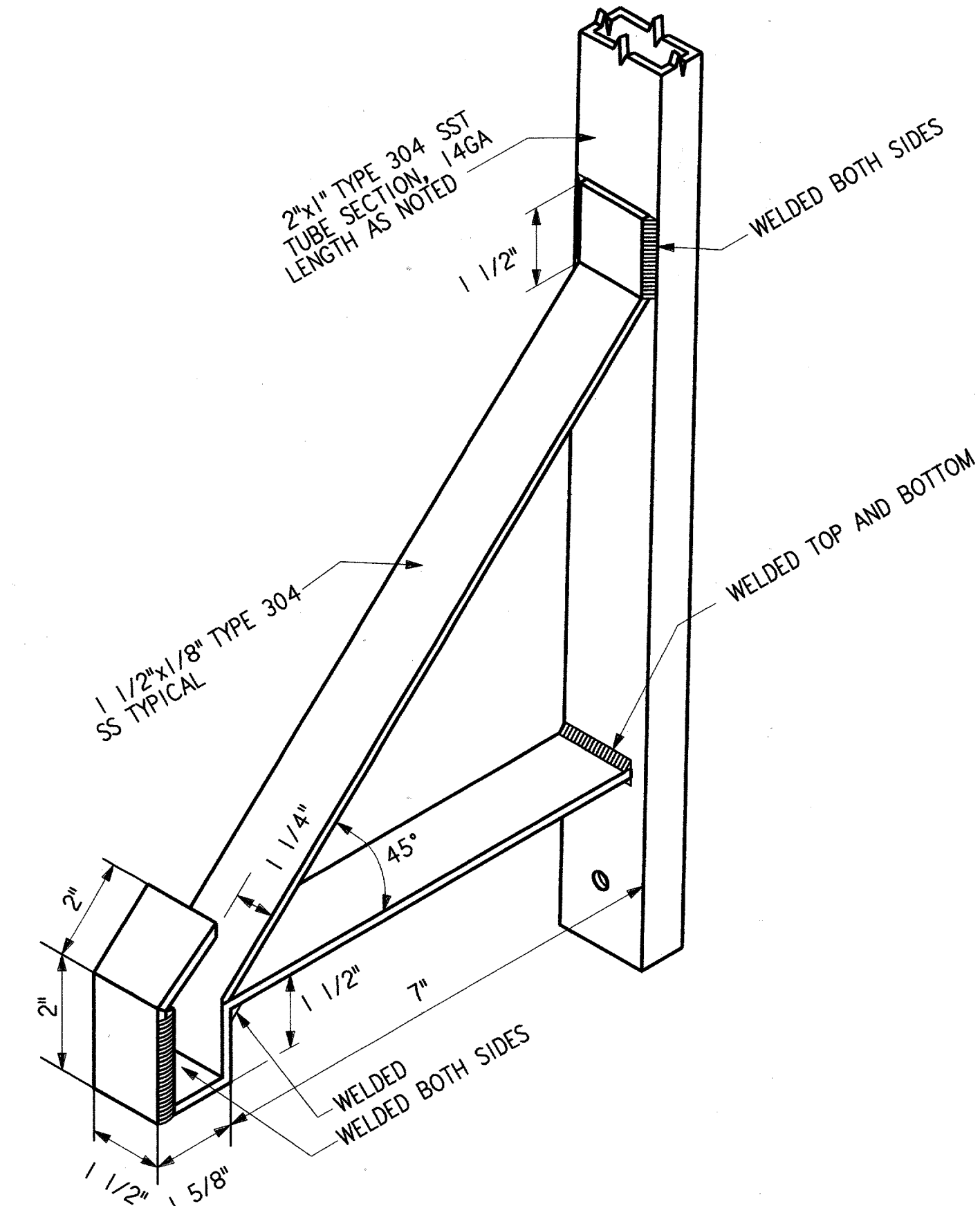
SPRAY NOZZLE DETAIL

NTS



DEFOGGER PUMP AND TANK DETAIL

NTS



PIPE HEADER SUPPORT BRACKET DETAIL

NTS

4

REF P10

NOTES

DEFOGGER CONTROL DIAGRAM:

- CONTROL WIRING TO SOLENOID VALVES SHALL BE 22 AWG, 2 CONDUCTOR, SHIELDED, POWER-LIMITED TRAY CABLE; "BELDEN" NO 9322, OR APPROVED EQUAL.
- TIMER SHALL BE A SPRING RETURN TYPE WITH UP TO 5 MINUTE SELECTION AND WITHOUT "HOLD POSITION"; "DAYTON" (GRAINGER) 6X545, OR APPROVED EQUAL.
- WINDOW WASHDOWN SWITCHES SHALL BE MOMENTARY CONTACT PUSHBUTTON TYPE WITH NORMALLY CLOSED CONTACTS; "GRAINGER" 2X901, OR APPROVED EQUAL.
- TRANSFORMER SHALL BE "BARBER COLMAN" MODEL AE-203, 120/24 VOLT, 170 VA CAPACITY, OR APPROVED EQUAL.
- ALL VALVES SHALL BE NORMALLY OPEN UNLESS NOTED OTHERWISE.

CAB WINDOW DEFOGGER OPERATION:

- TURN SYSTEM TIME KNOB CLOCKWISE TO SELECTED TIME INTERVAL (1 TO 5 MINUTES). THIS OPENS SYSTEM MAIN VALVE.
- SELECT A WINDOW FOR WASHDOWN THEN PRESS AND HOLD ITS PUSHBUTTON SWITCH. WHEN WASHDOWN IS COMPLETED, RELEASE PUSHBUTTON SWITCH. FOR SUCCESSFUL OPERATION, ONLY ONE WINDOW AT AT TIME SHOULD BE WASHED.

CAB SWITCH PANEL:

- SWITCH PANEL LOCATION IN TOWER CAB CONSOLE SHALL BE AS DIRECTED BY THE TOWER CHIEF.
- PANEL FACE SHALL BE GENERAL GRADE LAMINATED PLASTIC WITH WALNUT WOODGRAIN FINISH AND ENGRAVED WHITE LETTERING. FACE PLATE SHALL BE MOUNTED ON A 3/32" THICK ALUMINUM MOUNTING PLATE.
- 24 VOLT TRANSFORMER, RELAYS, TIMER, WIRING AND TERMINAL STRIP (12 CONNECTION MINIMUM) SHALL BE MOUNTED IN A CONTROL BOX WHICH SHALL BE ATTACHED TO THE BACK OF THE SWITCH PANEL MOUNTING PLATE.
- ALL SWITCH PANEL COMPONENTS SHALL BE COMMERCIAL GRADE QUALITY.

SPRAY NOZZLE:

- SPRAY NOZZLE SHALL BE MODEL NO. 1/4K27SS AND ADJUSTABLE BALL FITTING SHALL BE NO. 1/4" X 1/4" SS AS MANUFACTURED BY "SPRAYING SYSTEMS CO." OF WHEATON, ILLINOIS, OR APPROVED EQUAL.
- ALL SYSTEM WATER PIPING SHALL BE HARD DRAWN TYPE L COPPER WITH WROUGHT COPPER FITTINGS MADE UP WITH 95/5 SOLDER.
- CONTRACTOR SHALL PROVIDE SIX (6) SPARE SPRAY NOZZLES AND TURN THOSE OVER TO OWNER AT COMPLETION OF JOB.

PUMP AND TANK:

PUMP AND PRESSURE TANK SHALL BE A COMPLETE SKID MOUNTED ASSEMBLY WITH PRESSURE SWITCH, HAND-OFF-AUTOMATIC SWITCH, PRESSURE GAUGE AND 1/2 HP MOTOR (115 VOLT, 3 PHASE). PUMP CAPACITY SHALL BE 8 GPM IN BOOSTING WATER PRESSURE FROM 15 PSIG TO 50 PSIG.

PIPE HEADER AND BRACKET SUPPORT:

ALL WELDING OF THE SUPPORT BRACKET COMPONENTS SHALL BE DONE WITH TYPE 304 STAINLESS STEEL FILLER ROD. AFTER THE WELDING AND FABRICATION OF THE SUPPORT BRACKET HAS TAKEN PLACE, ALL SURFACES OF THE SUPPORT BRACKET SHALL BE SANDBLASTED AND THEN SPRAYED WITH A COAT OF PRIMER SUITABLE FOR THE FINISH COAT OF PAINT.

DAVID M. PFUNDT REGISTERED PROFESSIONAL ENGINEER SYSTEMS ENGINEER, ANI-630 6-22-01		DALLAS, TX	

DEPARTMENT OF TRANSPORTATION FEDERAL AVIATION ADMINISTRATION SOUTHWEST REGION FORT WORTH, TEXAS			
LOW ACTIVITY LEVEL AIRPORT TRAFFIC CONTROL TOWER PLUMBING DEFOGGER DETAILS ATCT			
ADDISON SUBMITTED: <i>[Signature]</i>	(ADDISON AIRPORT)	TEXAS	
DESIGNED: M. NAJERA REVIEWED: D. PFUNDT ORIG. DFT.: J. MILLER FACILITY:	ISSUED BY: AIRWAY FACILITIES DIVISION	DATE: 06-22-01 DRAWING NUMBER: ADS-ATCT- P10	APPROVED: <i>[Signature]</i> 10/15/01 MANAGER INFRASTRUCTURE PLATFORM, ANI-630