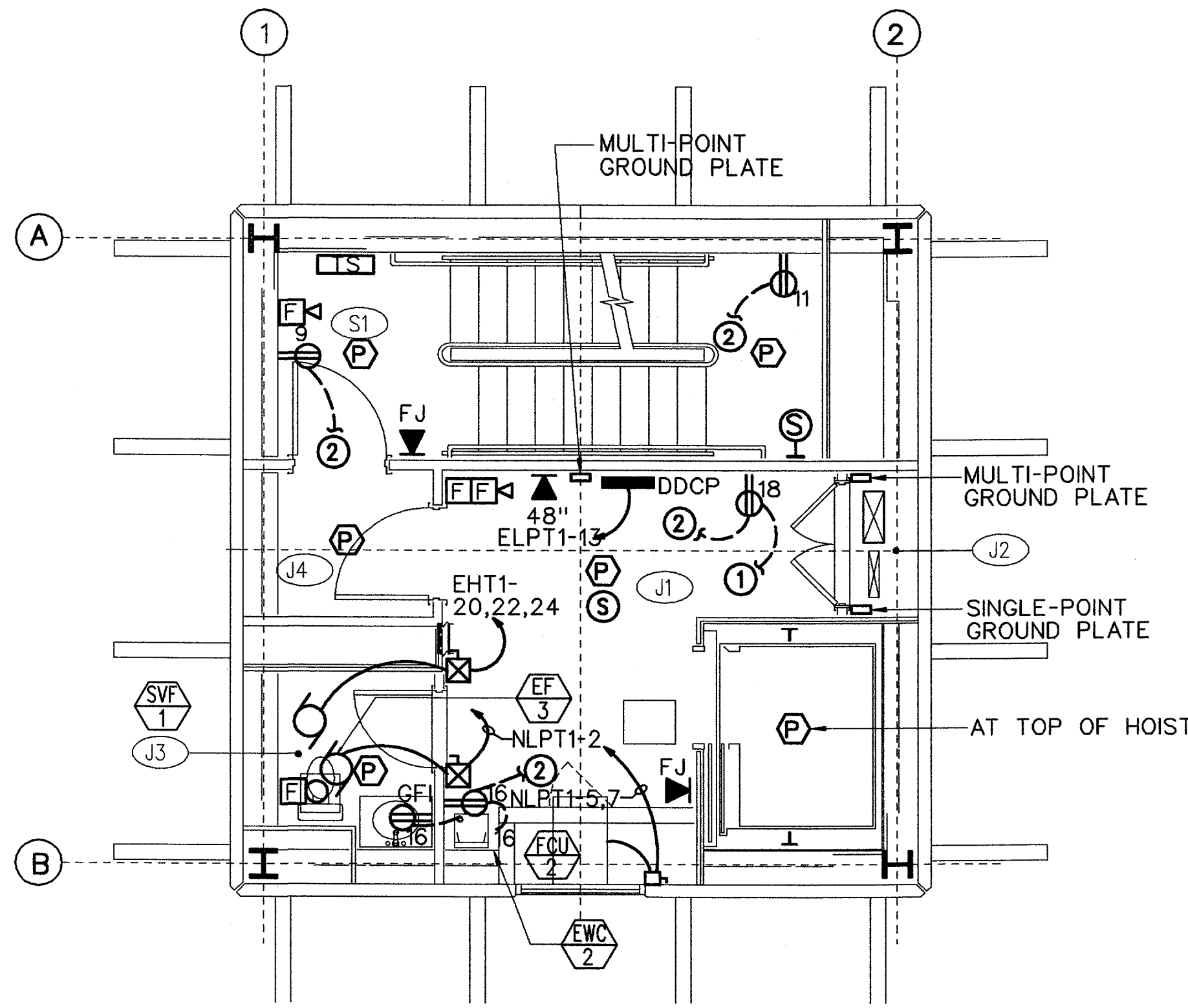
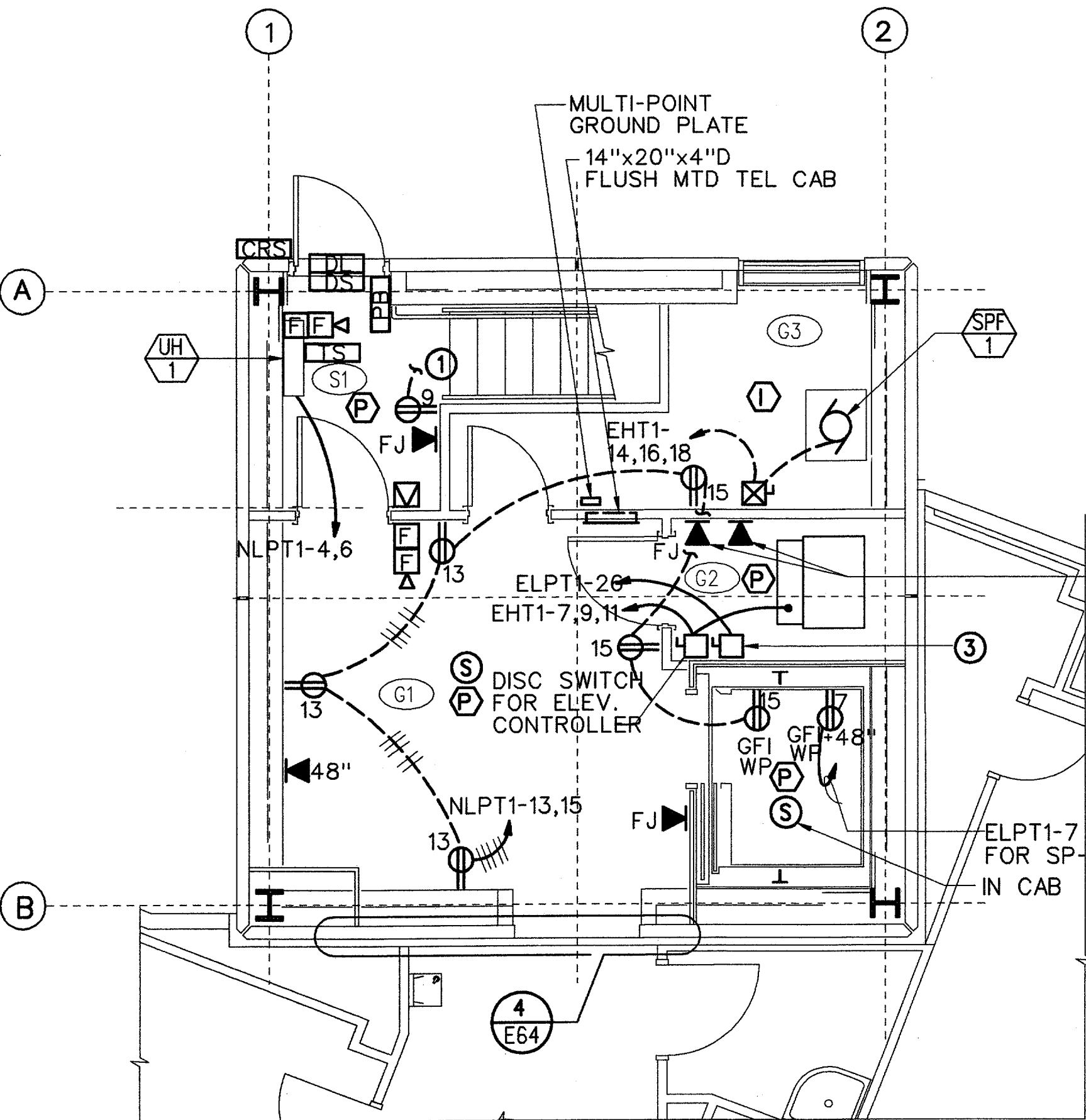


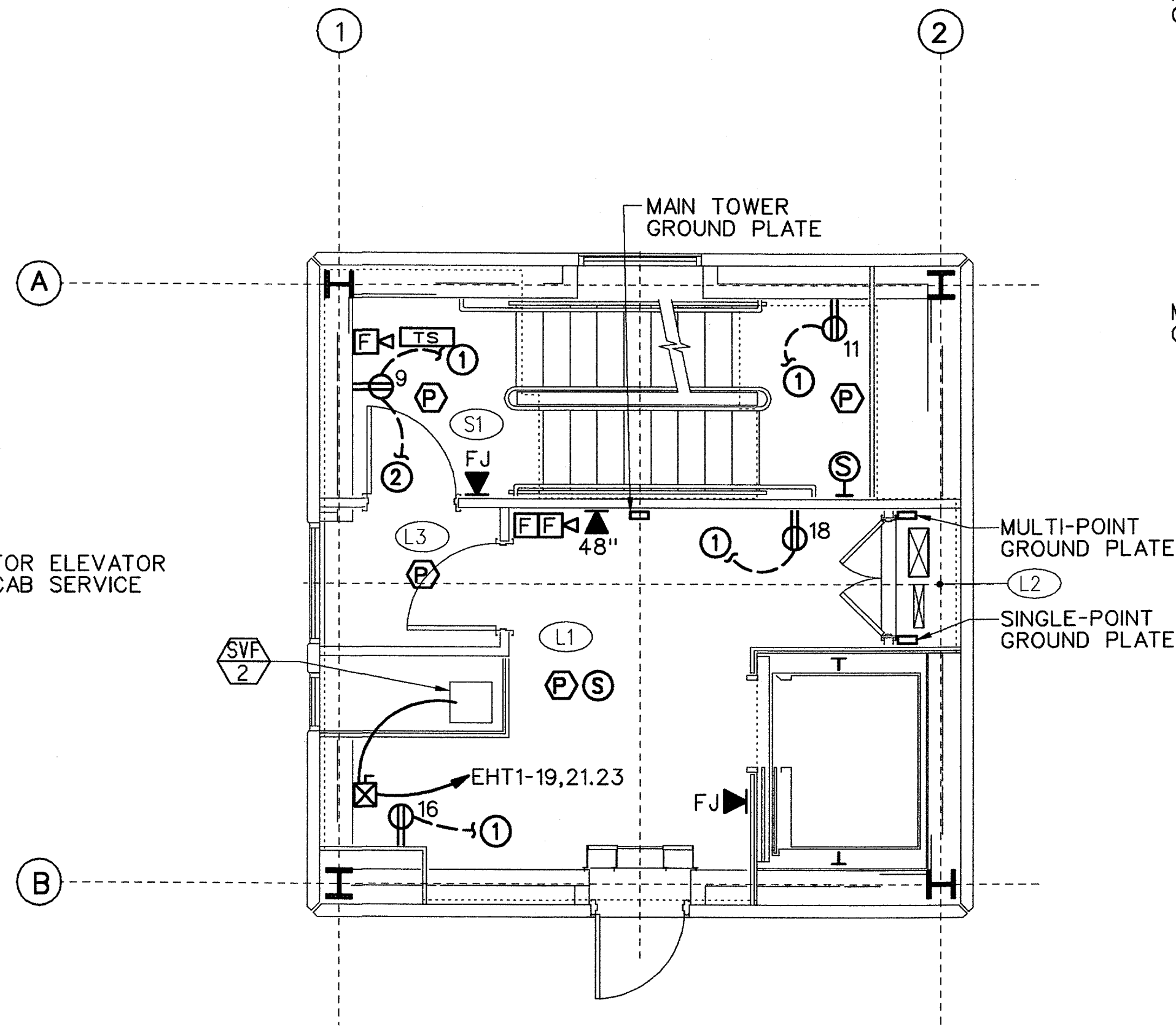
**TOP INTERMEDIATE LEVEL**  
SCALE: 1/4" = 1'-0" EL = 30'-0"



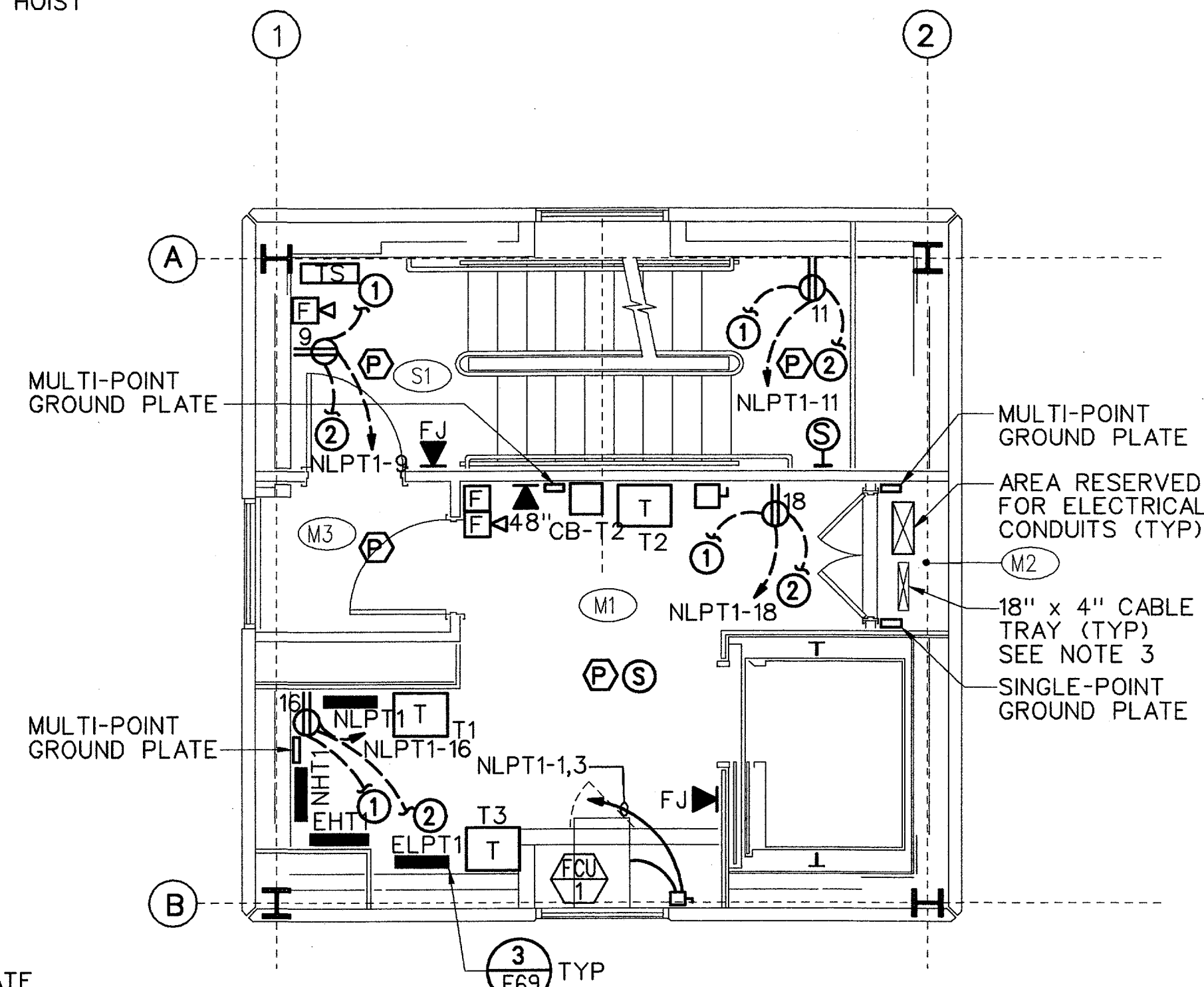
**JUNCTION LEVEL**  
SCALE: 1/4" = 1'-0" EL = 40'-0"



**GROUND LEVEL**  
SCALE: 1/4" = 1'-0" EL = 0'-0"



**LOWER INTERMEDIATE LEVEL**  
SCALE: 1/4" = 1'-0" EL = 10'-0"



**MIDDLE INTERMEDIATE LEVEL**  
SCALE: 1/4" = 1'-0" EL = 20'-0"

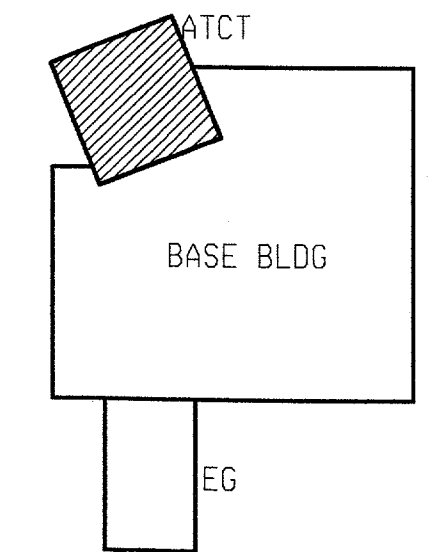
ROOM SCHEDULE	
RM NO.	ROOM NAME
G1	LOBBY
G2	ELEVATOR MACHINE ROOM
G3	STAIR PRESSURIZATION
L1	UNASSIGNED
L2	CABLE CHASE
L3	VESTIBULE
M1	ELECTRICAL EQUIPMENT
M2	CABLE CHASE
M3	VESTIBULE
T1	ELECTRONIC EQUIPMENT
T2	CABLE CHASE
T3	VESTIBULE
J1	CORRIDOR
J2	CABLE CHASE
J3	WOMEN'S RESTROOM
J4	VESTIBULE
S1	STAIR

**GENERAL NOTES:**

- BOND ALL HVAC AND ELEVATOR EQUIPMENT TO THE MULTI-POINT GROUND PLATES ON EACH LEVEL.
- ALL TELEPHONE AND FIREMAN'S PHONE JACKS AT +48" AFF.
- INSTALL NO.6 BARE COPPER GROUND WIRE IN ALL CABLE TRAY.

**SPECIAL NOTES:**

- TO RECEPTACLE ABOVE.
- TO RECEPTACLE BELOW.
- 30/1 NF SWITCH FOR ELEVATOR CAB.



**KEY PLAN**

REV	DATE	DESCRIPTION	JCN	REDLINE DATE	APVD
A	06-23-03	FAA REDESIGN OF HVAC, JON 21874.	9700164	06-23-03	
DEPARTMENT OF TRANSPORTATION <b>FEDERAL AVIATION ADMINISTRATION</b> FORT WORTH IMPLEMENTATION CENTER FORT WORTH, TX <b>LOW ACTIVITY LEVEL ATCT</b>					
<b>POWER PLANS</b>					
ADDISON		ADDISON AIRPORT		TX	
REVIEWED BY	SUBMITTED BY	APPROVED BY			
	<i>M.A. Lebedev</i> 7/18/03	<i>John L. White</i> 7/18/03			
PROJECT ENGINEER, ANI-630	DESIGNED	ISSUED BY	DATE	FORM MANAGER, ANI-630	
M. DOERR	LTM	NAS IMPLEMENTATION ANI-600	06-23-03	JCN	9700164
CHECKED			DRAWING NO	REV	
			ADS-D-ATCT-E011		A