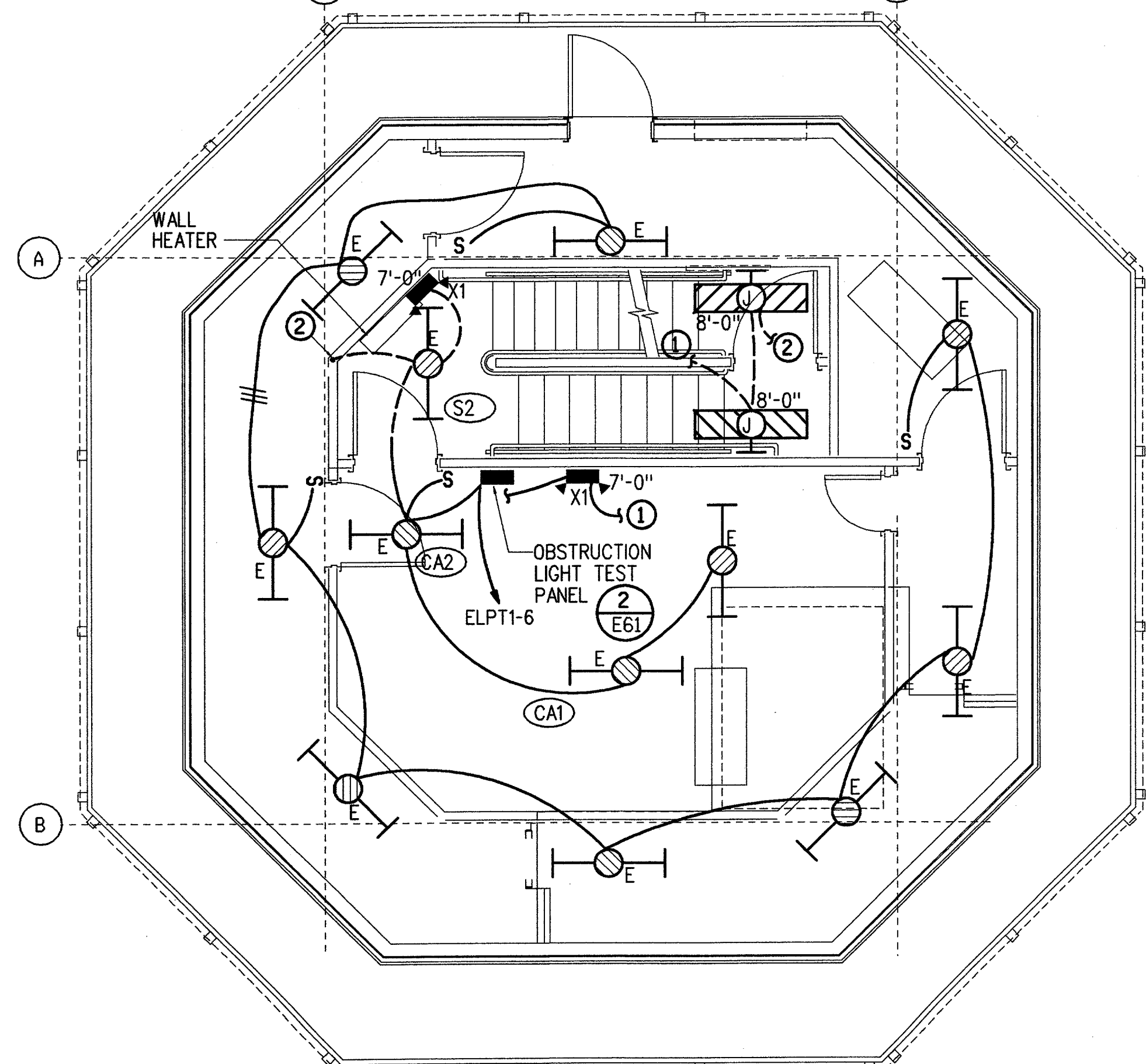
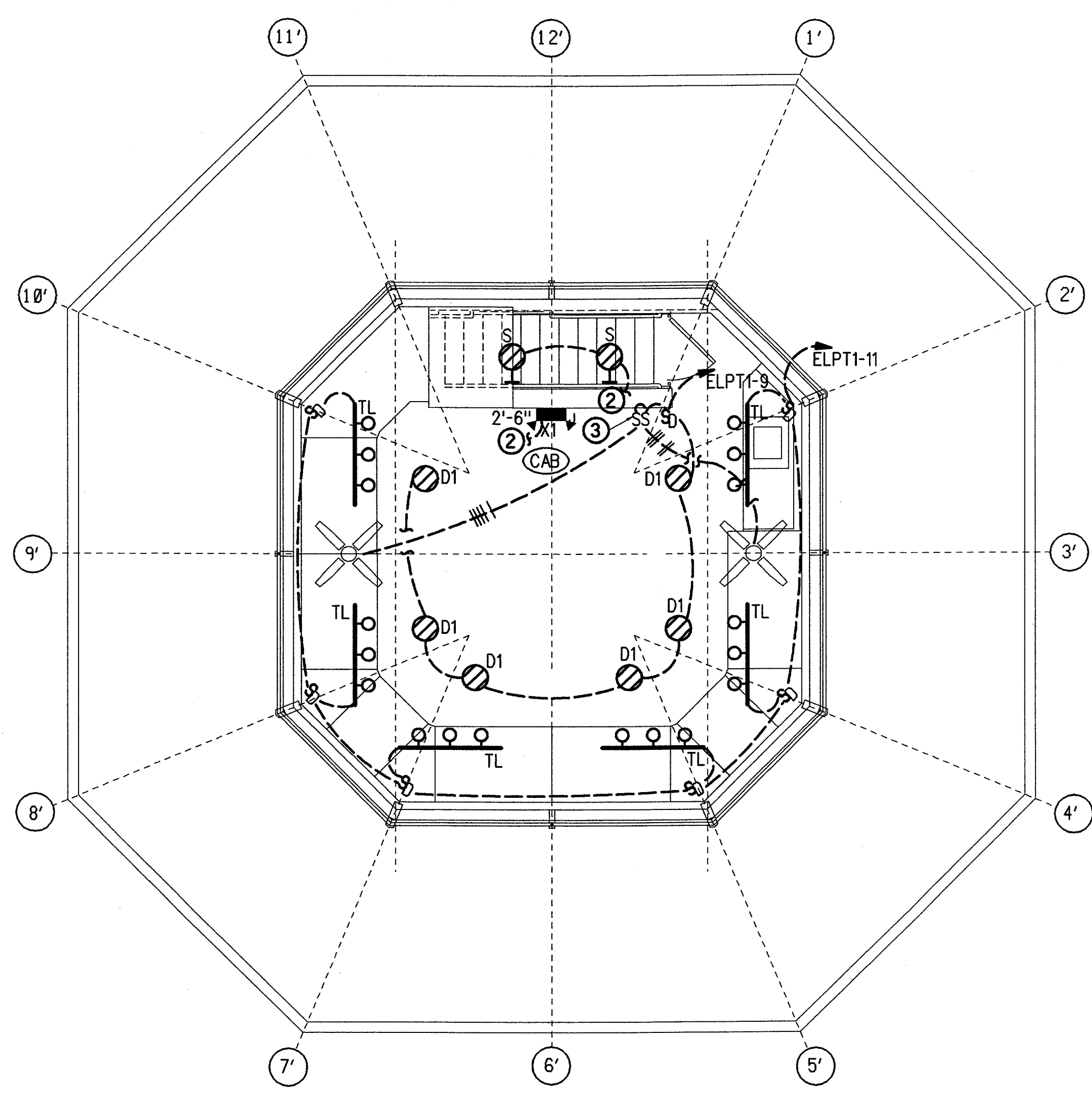


**CAB ROOF LEVEL**  
SCALE: 1/4" = 1'-0" EL = 49'-10"



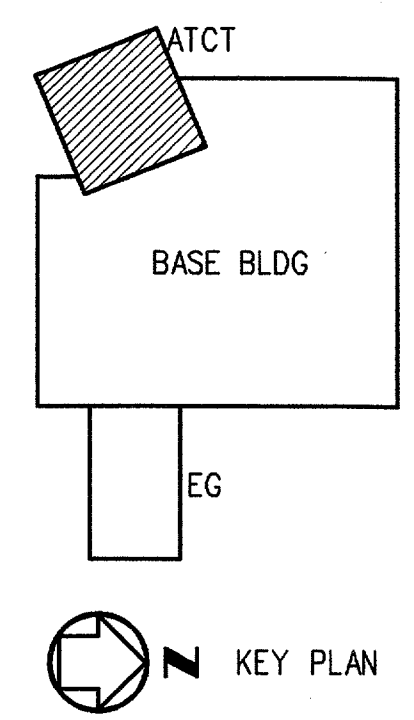
**CABLE ACCESS AND WALKWAY LEVEL**  
SCALE: 1/4" = 1'-0" EL = 49'-10"



**CAB LEVEL**  
SCALE: 1/4" = 1'-0" EL = 49'-10"

ROOM SCHEDULE	
RM NO.	ROOM NAME
CA1	CABLE ACCESS
CA2	VESTIBULE
CAB	CAB
S2	CAB STAIR

- SPECIAL NOTES:**
- ① TO LIGHT FIXTURE ABOVE.
  - ② TO LIGHT FIXTURE BELOW.
  - ③ 3 SPEED CEILING FAN CONTROL WITH OFF POSITION, TYPICAL FOR 2.
  - ④ INSTALL WEATHERPROOF SWITCH FOR LIGHTS IN CEILING SPACE OF CAB NEAR ROOF ACCESS HATCH.



REV	DATE	DESCRIPTION	JCN	REOLINE DATE	APVD
A	06-23-03	FAA REDESIGN OF HVAC, JON 21874.	9700164	06-23-03	

**DEPARTMENT OF TRANSPORTATION  
FEDERAL AVIATION ADMINISTRATION  
FORT WORTH IMPLEMENTATION CENTER FORT WORTH, TX**  
**LOW ACTIVITY LEVEL ATCT**  
**LIGHTING PLANS**

ADDISON	ADDISON AIRPORT	TX
REVIEWED BY	SUBMITTED BY	APPROVED BY
	<i>M.A. LaHeads</i> 7/18/03	<i>Johnnie D. White</i> 7/18/03
DESIGNED	PROJECT ENGINEER, ANI-630	PLATFORM MANAGER, ANI-630
DRAWN	M. DOERR	DATE
CHECKED	LTM	06-23-03
	NAS IMPLEMENTATION ANI-600	JCN
		9700164
		REV
		ADS-D-ATCT-E022
		A