

8

7

6

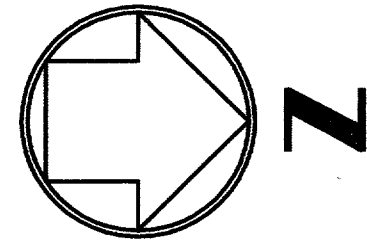
5

4

3

2

1

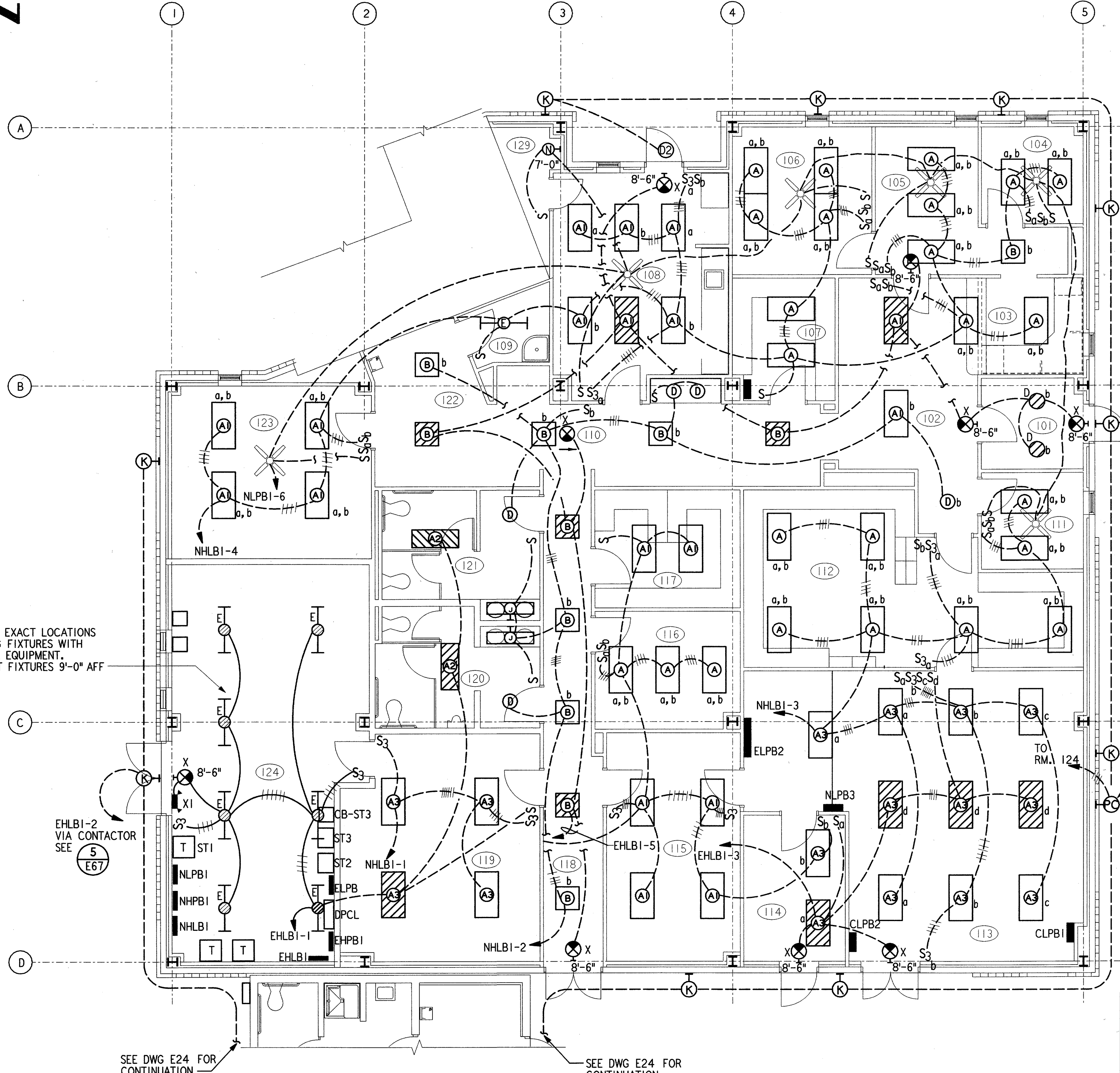


ROOM SCHEDULE

RM NO	ROOM NAME
101	VESTIBULE
102	LOBBY
103	RECEPTION
104	AT OFFICE
105	GATS
106	TOWER MANAGER
107	MAIL/FAX/COPY ROOM
108	BREAKROOM
109	STORAGE
110	CORRIDOR
111	AF OFFICE
112	RMM/LIS/MMS ROOM
113	ELECTRONIC ROOM
114	TELCO
115	MATERIAL STORAGE
116	AT/AR/CBI TRAINING RM
117	AT/AF STORAGE
118	CORRIDOR
119	ESU SHOP
120	MEN'S TOILET
121	WOMEN'S TOILET
122	LINK
123	AT/AF CONFERENCE RM
124	MECH/ELEC ROOM
125	TOILET/SHOWER
126	E/G ROOM
129	CABLE ACCESS ROOM

NOTES:

- SEE DRAWINGS A10 AND A11 FOR EXACT EXTERIOR FIXTURE LOCATIONS AND MOUNTING HEIGHTS.



COORDINATE EXACT LOCATIONS OF LIGHTING FIXTURES WITH MECHANICAL EQUIPMENT. STEM MOUNT FIXTURES 9'-0" AFF

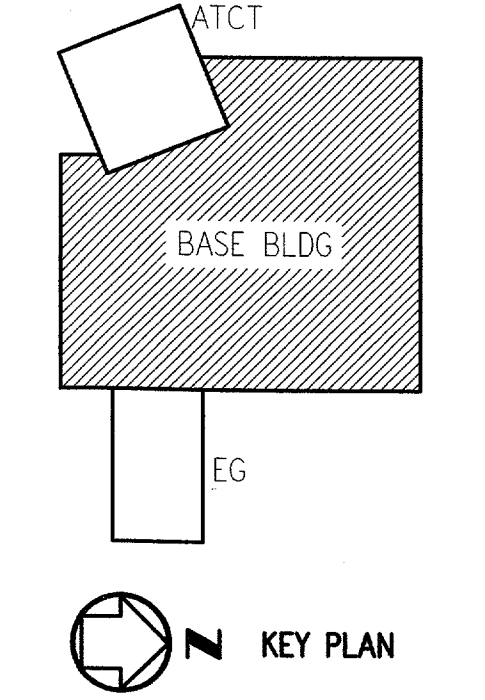
EHLBI-2 VIA CONTACTOR SEE (5) E67

SEE DWG E24 FOR CONTINUATION

SEE DWG E24 FOR CONTINUATION

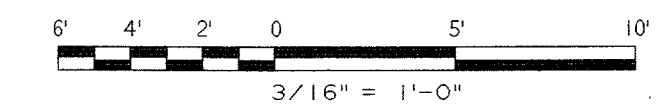
SEE NOTE 1, TYPICAL

(5) PHOTOCELL CONTROL FOR E67 EXTERIOR LIGHTS. 12'-6" ABOVE THE FLOOR.



FLOOR PLAN BASE BUILDING

3/16" = 1'-0"



REV.	DATE	DESCRIPTION	DFTG.	CHECKED

69431
A. K. GHASSEMI
REGISTERED PROFESSIONAL ENGINEER

PARSONS

DALLAS, TX

DEPARTMENT OF TRANSPORTATION
FEDERAL AVIATION ADMINISTRATION

SOUTHWEST REGION FORT WORTH, TEXAS

LOW ACTIVITY LEVEL
AIRPORT TRAFFIC CONTROL TOWER

LIGHTING PLAN
BASE-EG BUILDING

ADDISON (ADDISON AIRPORT) TEXAS

DESIGNED BY: A. SMITH

REVIEWED BY: B. EISENRICH

ORIG. DFT. : R. RUTGER

FACILITY:

ISSUED BY:
AIRWAY FACILITIES DIVISION

DATE: 06-22-01

DRAWING NUMBER:
ADS-ATCT- E23

SUBMITTED: *[Signature]* 10/15/01

MANAGER INFRASTRUCTURE PLATFORM, ANI-630

APPROVED: *[Signature]* 10/15/01

MANAGER INFRASTRUCTURE PLATFORM, ANI-630

E23