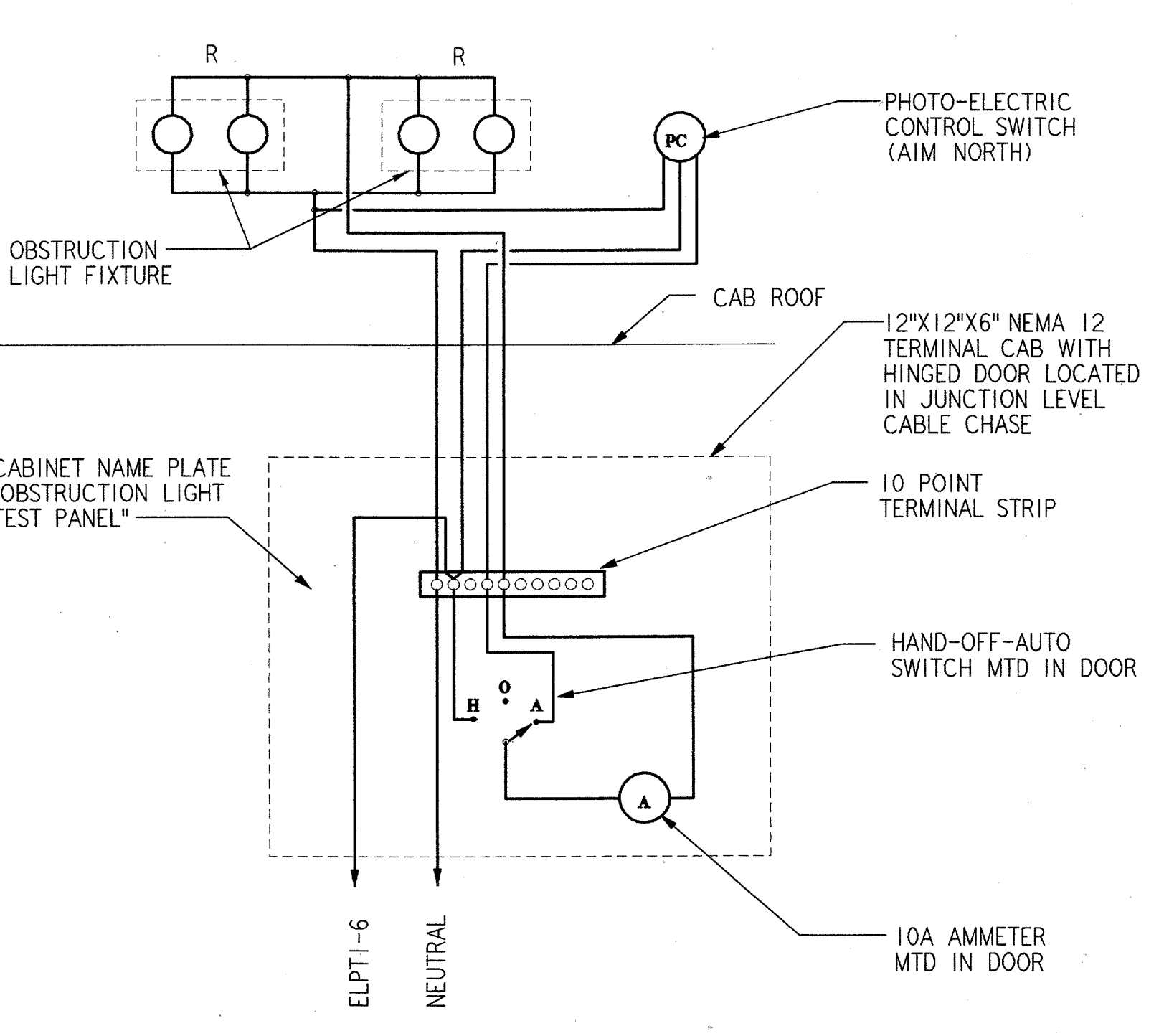
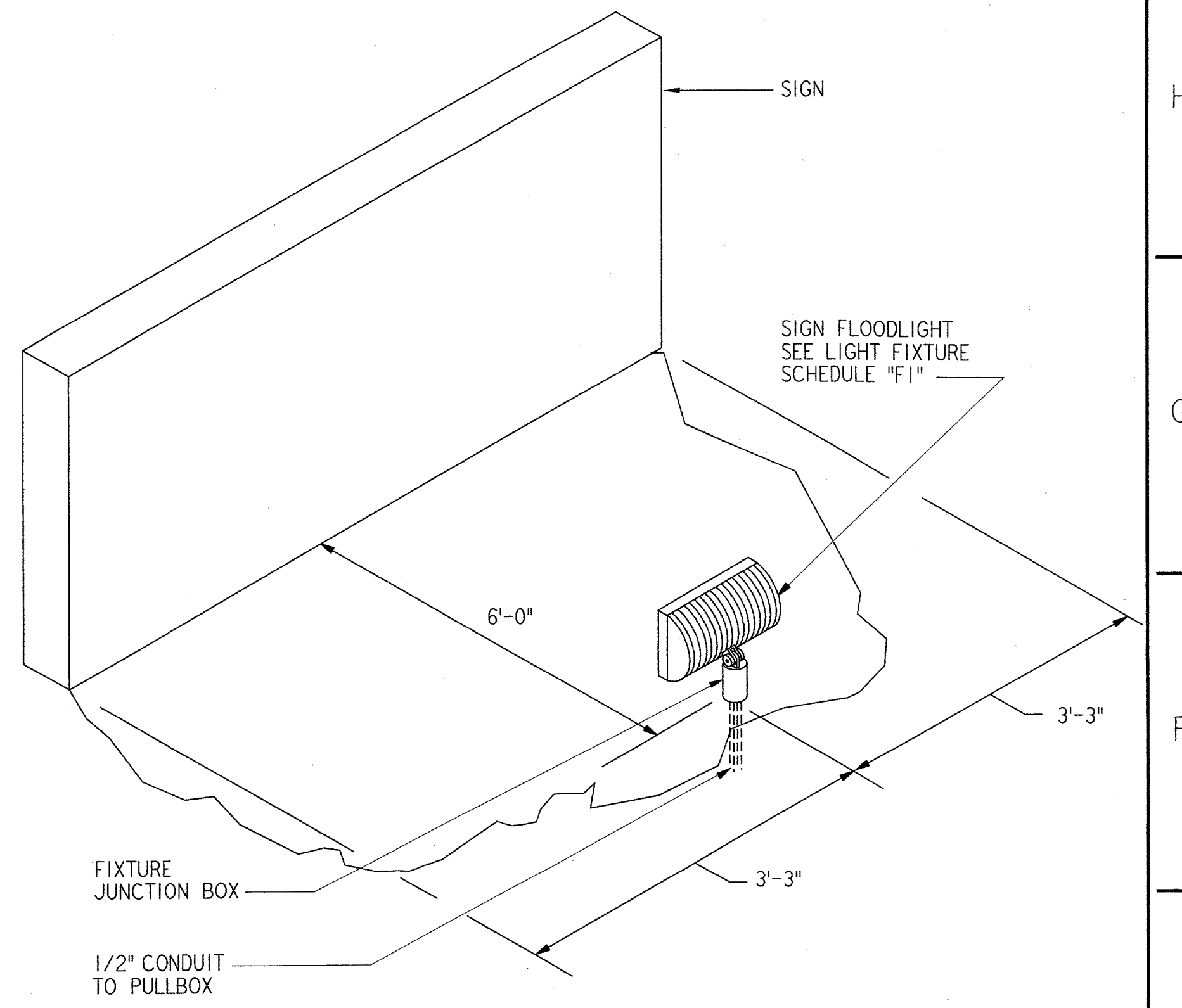


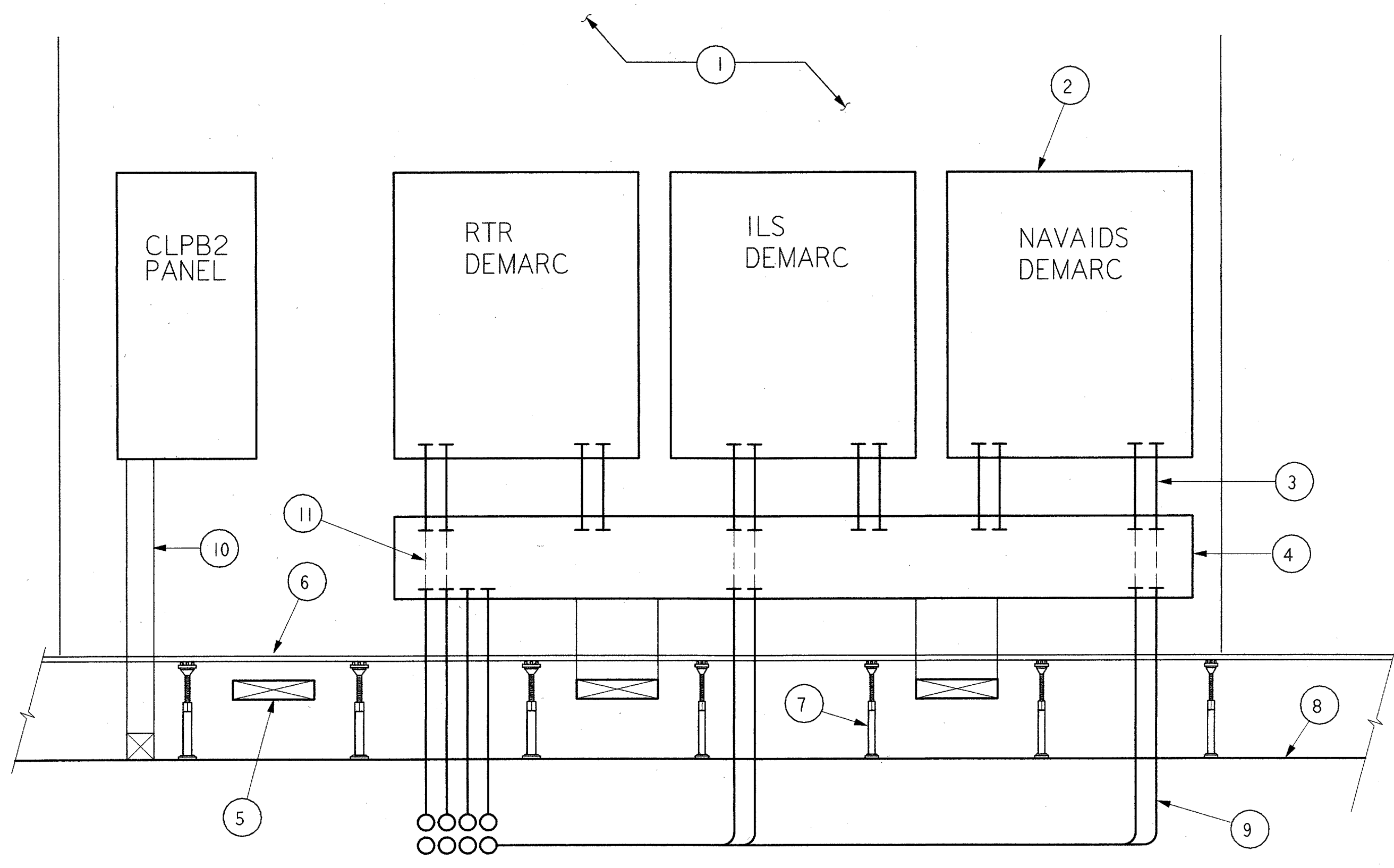
OBSTRUCTION LIGHT MOUNTING DETAIL (1) REF E22
 NTS E61



OBSTRUCTION LIGHT TEST PANEL (2) REF E22
 NTS E61



SIGN LIGHTING DETAIL (4) REF E25
 NTS E61

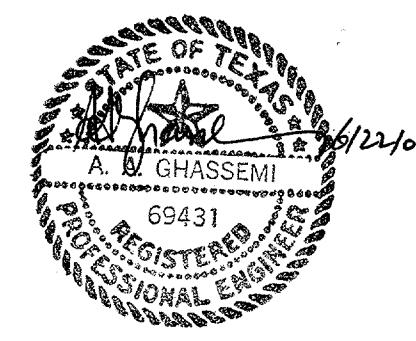



DEMARC CABINET DETAILS (5) REF E13, E14, E15, E25
 NTS E61

SPECIAL NOTES:

- (1) WALL
- (2) 42" H x 36" W x 9" D NEMA 1 ENCLOSURE, HOFFMAN NO. A-42N3609 WITH "T" HANDLE LATCH AND 3/4" PLYWOOD BACKBOARD (TYP. OF 3)
- (3) 4" CONDUIT (TYP. OF 12)
- (4) 12" x 12" NEMA 1 WIREWAY WITH HINGED COVER. (HINGE ON BOTTOM)
- (5) 12" CABLE TRAY (TYP. OF 3)
- (6) TOP OF RAISED FLOOR
- (7) RAISED FLOOR PEDESTAL
- (8) CONCRETE SLAB
- (9) (8) 4" CONDUITS TO MANHOLE
- (10) 4" SQUARE DUCT
- (11) ALIGN CONDUITS IN TOP AND BOTTOM OF WIREWAY AS INDICATED (TYP. 6 PLACES)

REV.	DATE	DESCRIPTION	DFTG.	CHECKED

DALLAS, TX

DEPARTMENT OF TRANSPORTATION
 FEDERAL AVIATION ADMINISTRATION
 SOUTHWEST REGION FORT WORTH, TEXAS
 LOW ACTIVITY LEVEL
 AIRPORT TRAFFIC CONTROL TOWER
ELECTRICAL DETAILS

ADDISON (ADDISON AIRPORT) TEXAS
 SUBMITTED: *[Signature]* 10/15/01 APPROVED: *[Signature]* 10/15/01
 SYSTEM ENGINEER, ANI-630 MANAGER INFRASTRUCTURE PLATFORM, ANI-630
 DESIGNED: A. SMITH ISSUED BY: AIRWAY FACILITIES DIVISION DATE: 06-22-01
 REVIEWED: B. EISENTRICH DRAWING NUMBER: ADS-ATCT-E61
 ORIG. DFT.: R. RUTGER FACILITY: