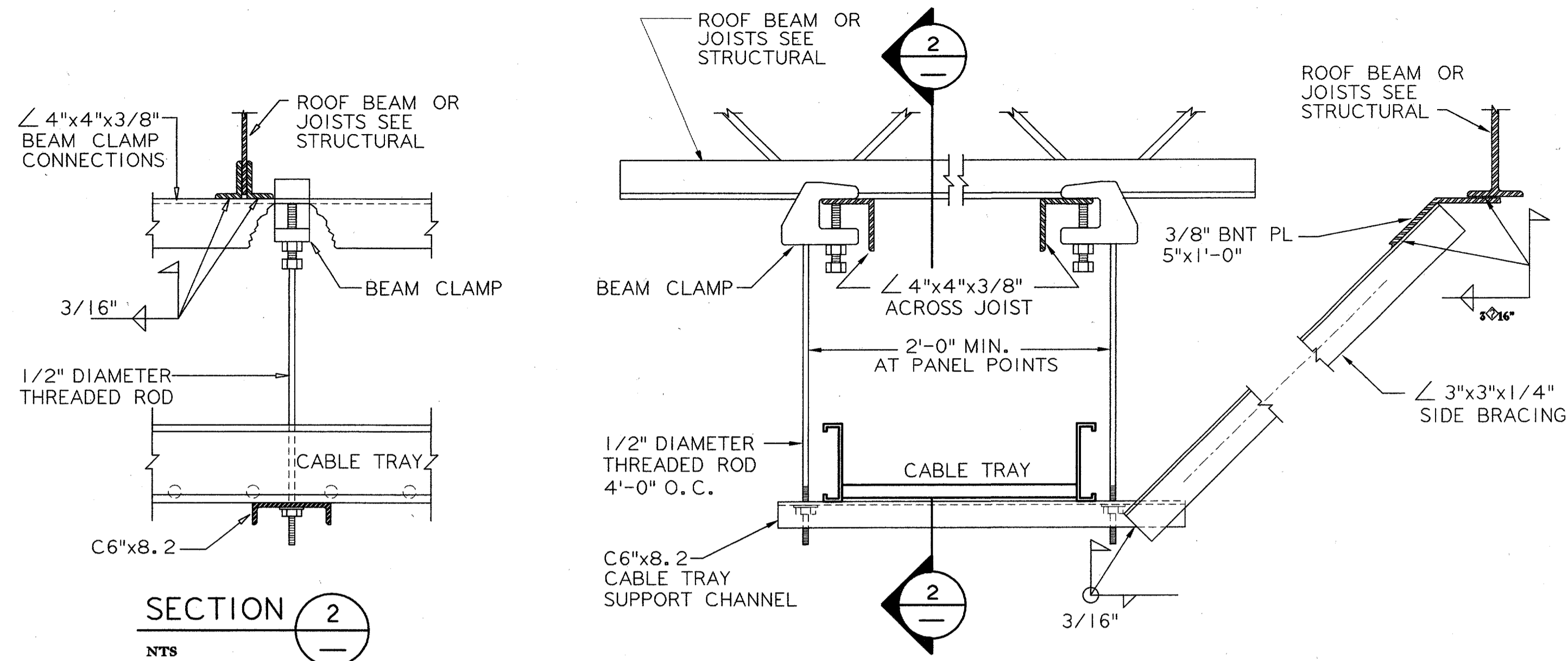
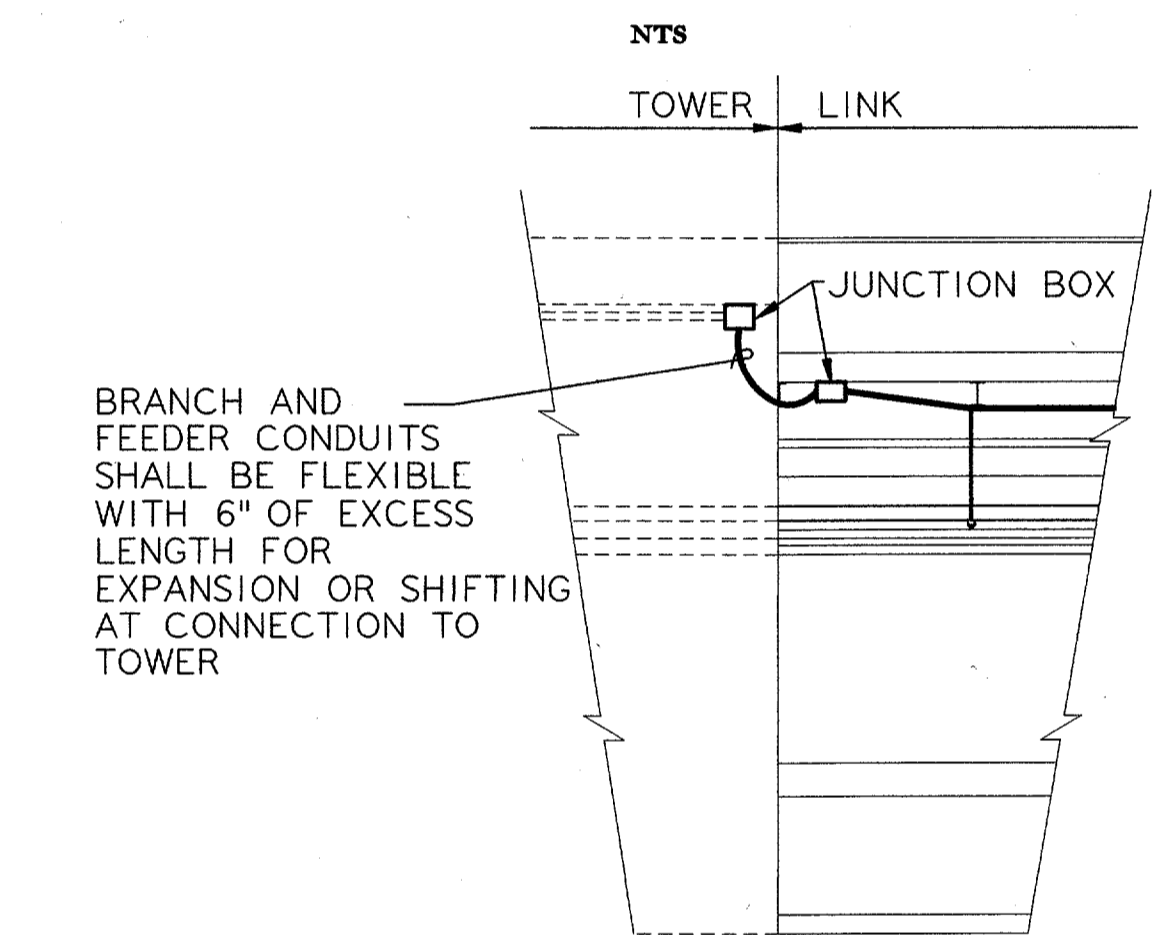


H  
G  
F  
E  
D  
C  
B  
A

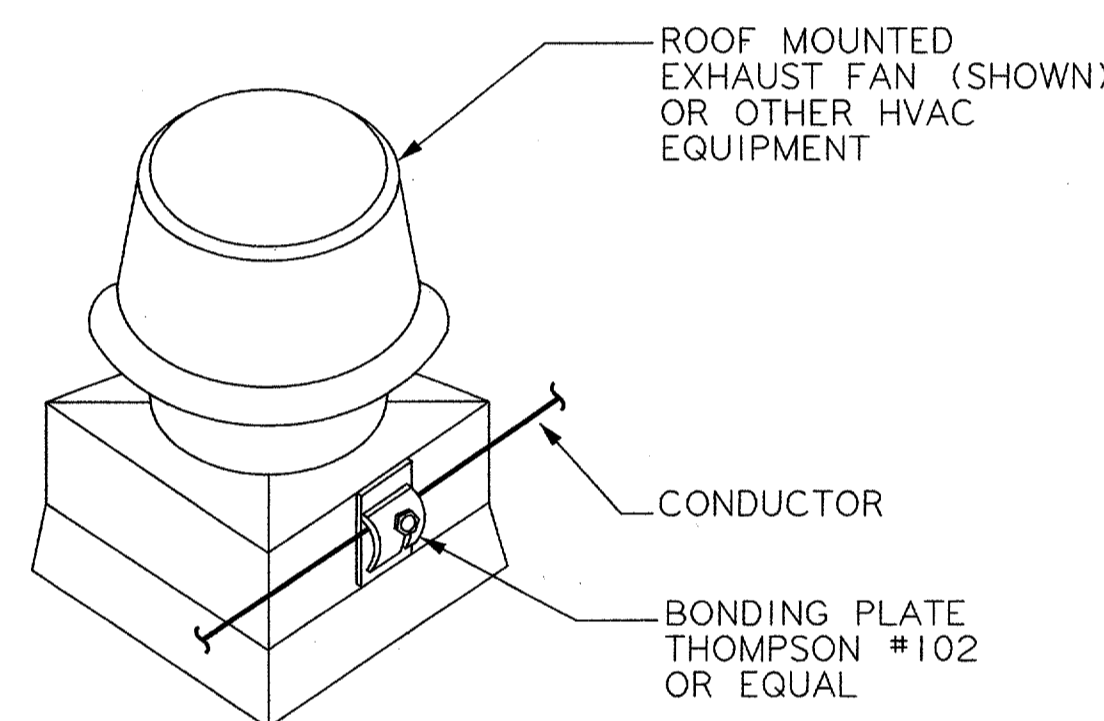


CABLE TRAY SUPPORT BRACING DETAIL

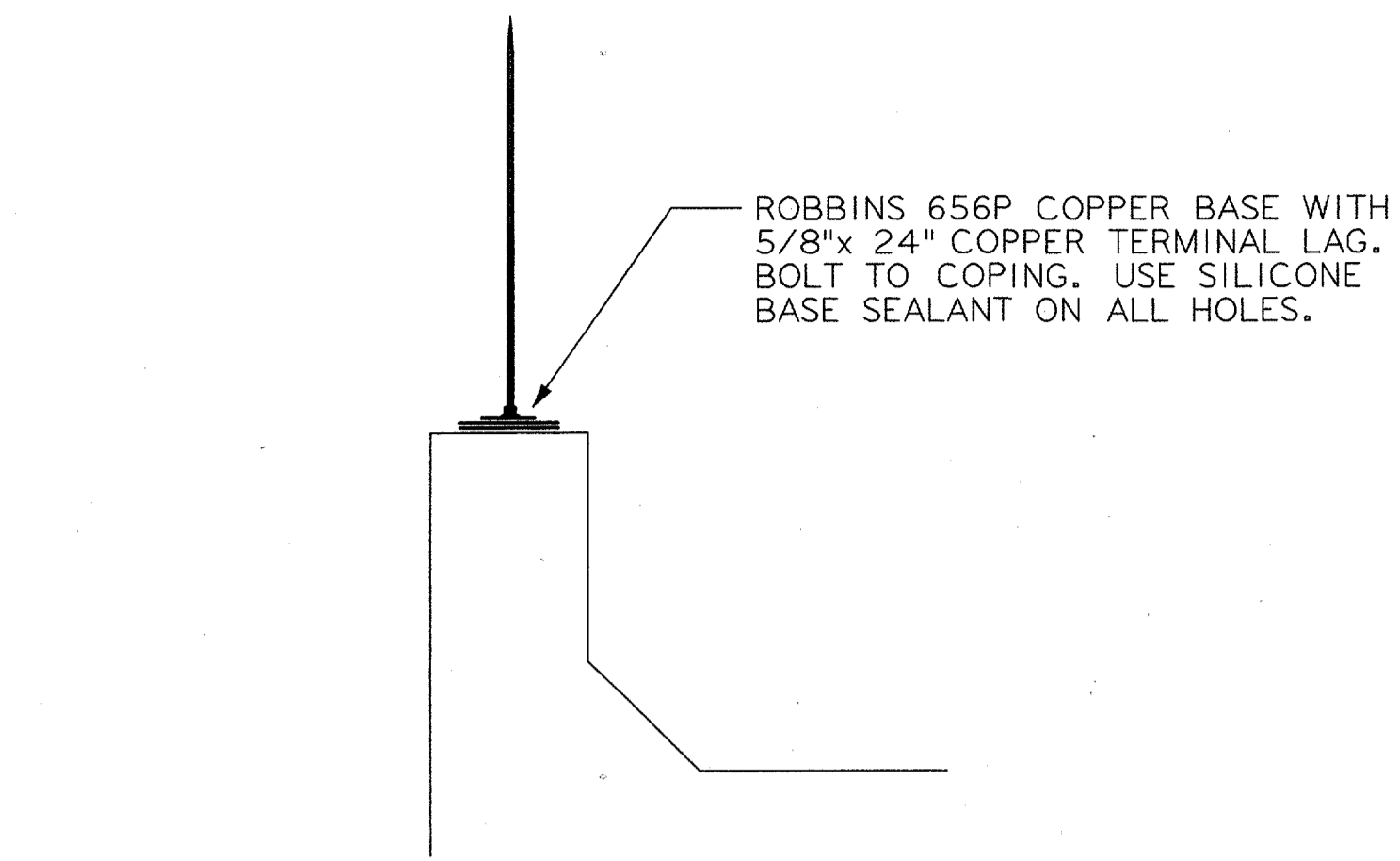
1 REF E64 E12 E14



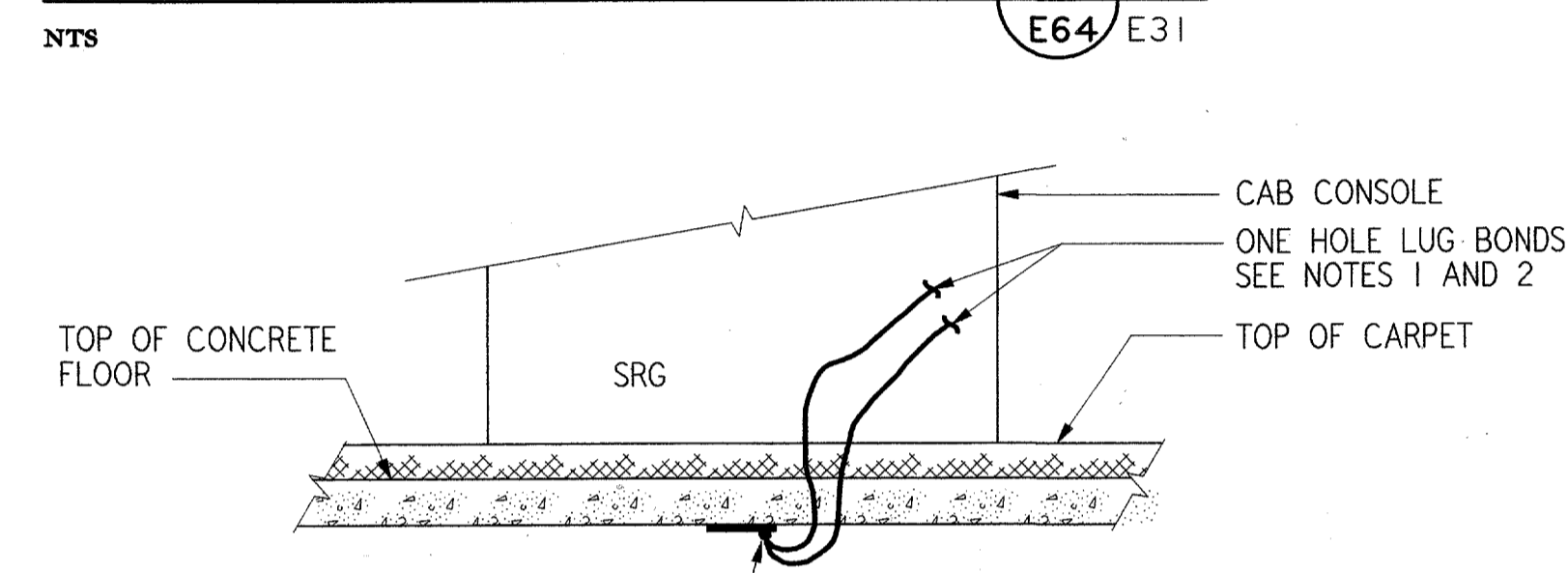
DETAIL OF CONDUIT CONNECTION



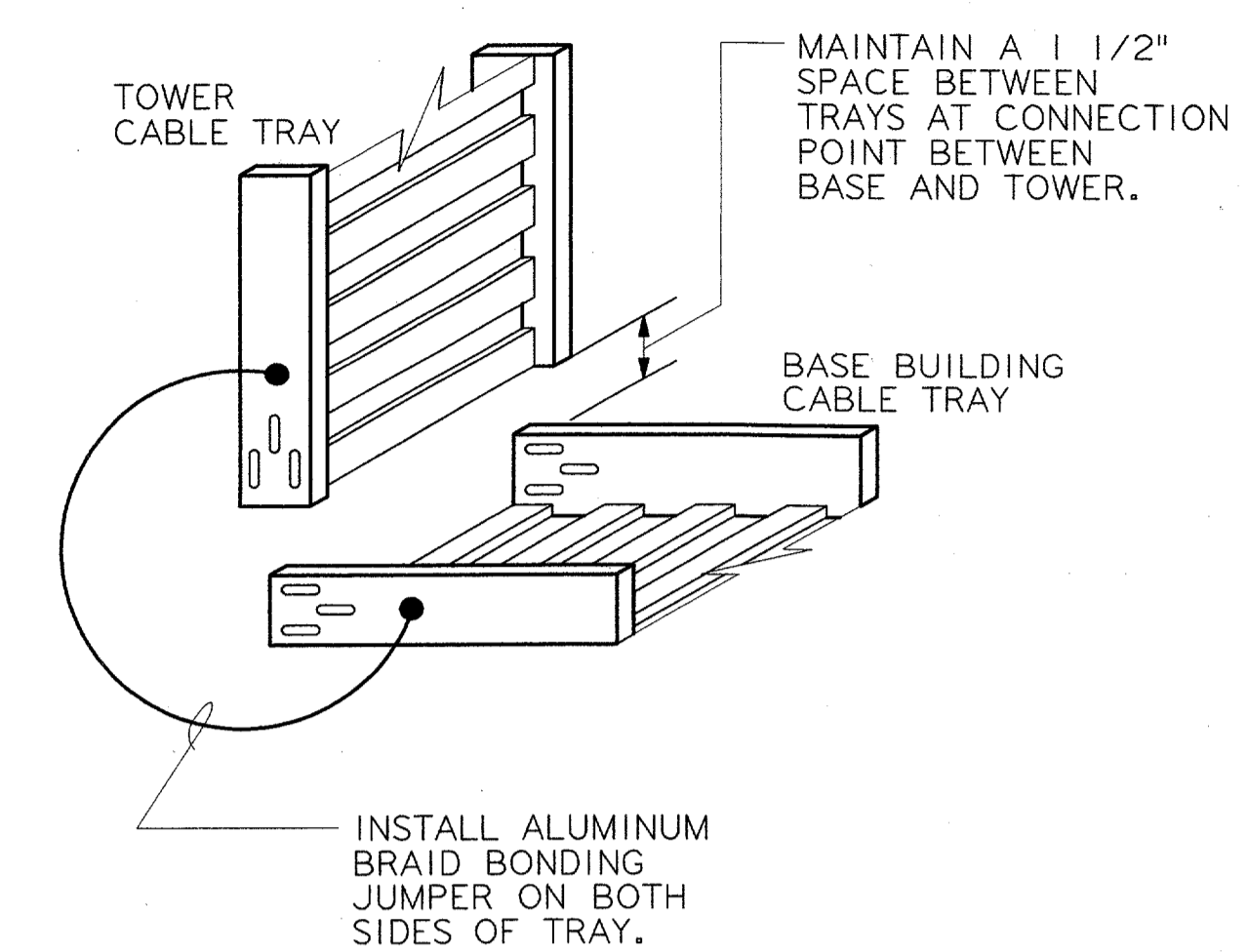
ROOF MOUNTED HVAC EQUIPMENT BONDING



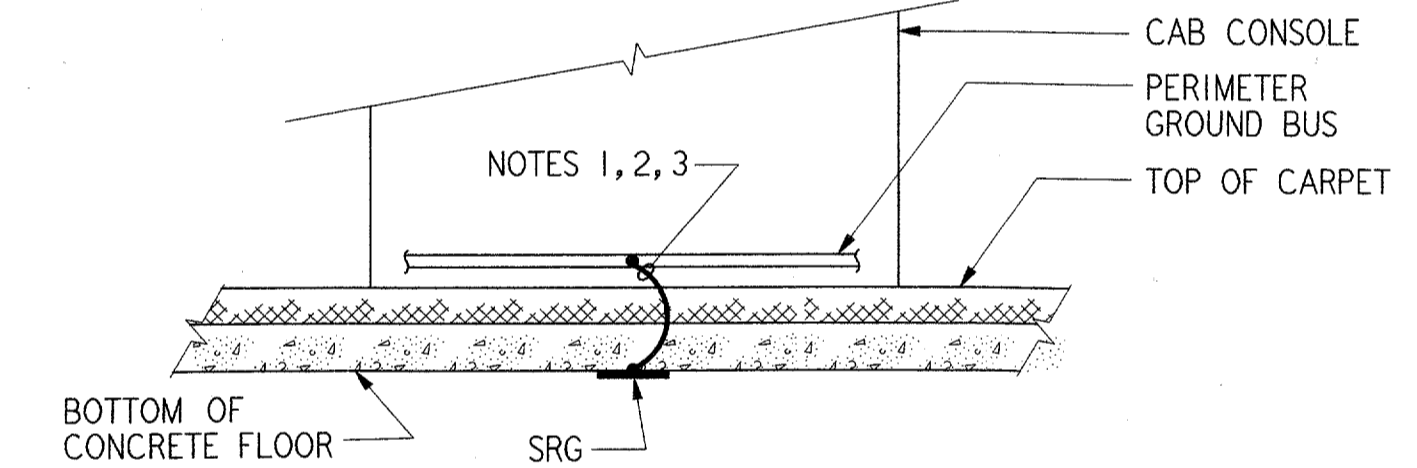
LIGHTNING ROD AT PARAPET



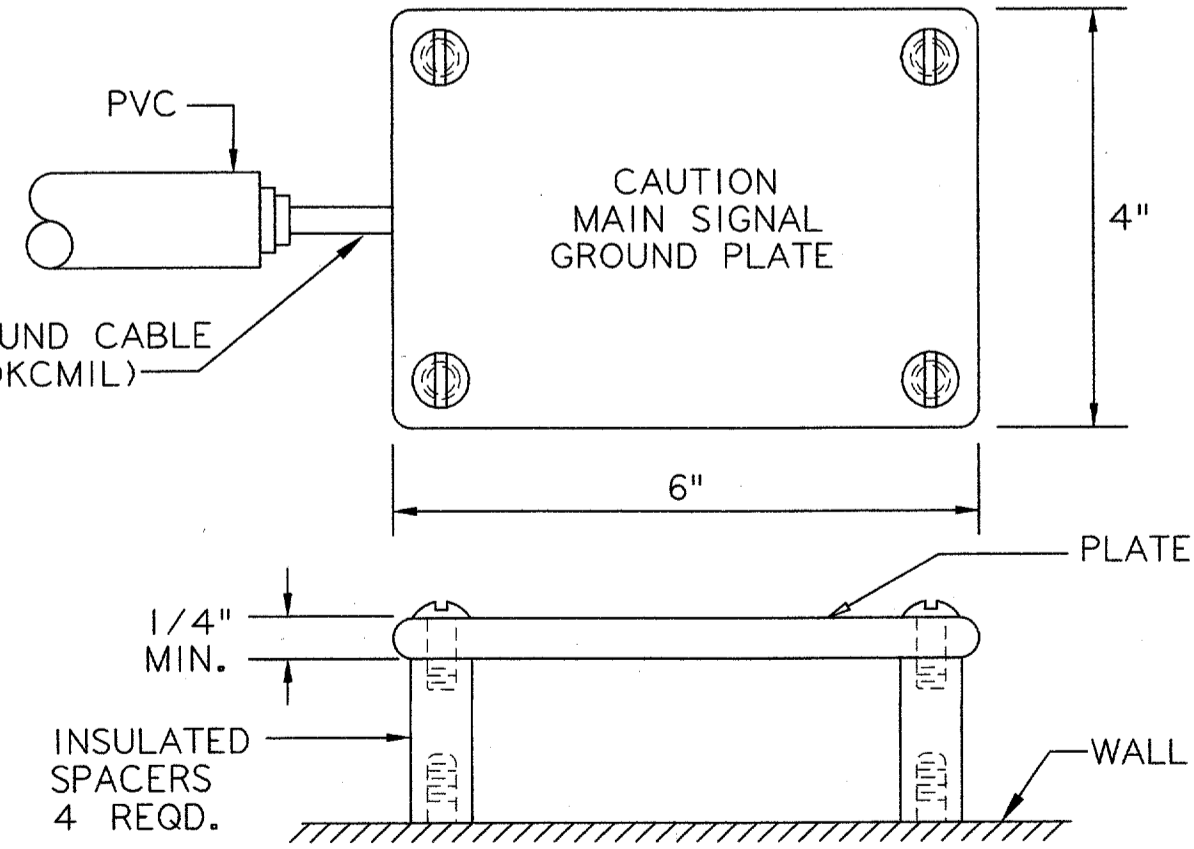
EQUIPMENT LUG BOND DETAIL



EXPANSION JOINT DETAIL



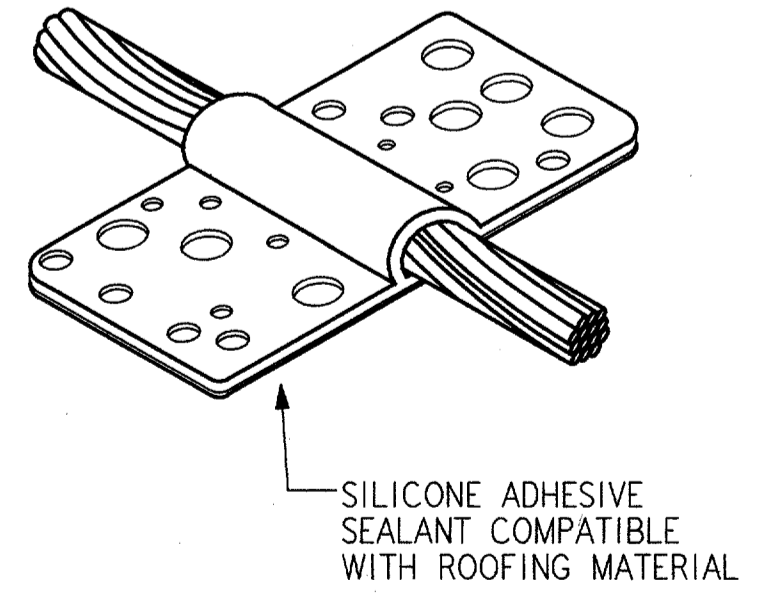
GROUND CONNECTION TO SRG



NOTES:

1. MOUNT GROUND PLATE AT 6'-6" A.F.F.
2. MULTIPOINT & SINGLE POINT BRANCH & FEEDER PLATES ARE SIMILAR, EXCEPT FOR CABLE SIZE.

MAIN GROUND PLATE DETAIL



ROOF CONDUCTOR

REV.	DATE	DESCRIPTION	DFTG.	CHECKED

STATE OF TEXAS  
REGISTERED PROFESSIONAL ENGINEER  
A. U. GHASSEM  
69431  
12/22/01

**PARSONS**

DALLAS, TX

DEPARTMENT OF TRANSPORTATION  
FEDERAL AVIATION ADMINISTRATION  
SOUTHWEST REGION FORT WORTH, TEXAS

LOW ACTIVITY LEVEL  
AIRPORT TRAFFIC CONTROL TOWER

ELECTRICAL DETAILS

ADDISON (ADDISON AIRPORT) TEXAS

DESIGNED BY: A. SMITH  
REVIEWED BY: B. EISENBRICH  
ORIG. DFT.: R. RUTGER  
FACILITY:

ISSUED BY: AIRWAY FACILITIES DIVISION

DATE: 06-22-01  
DRAWING NUMBER: ADS-ATCT- E64

MANAGER INFRASTRUCTURE PLATFORM, ANI-630

E64